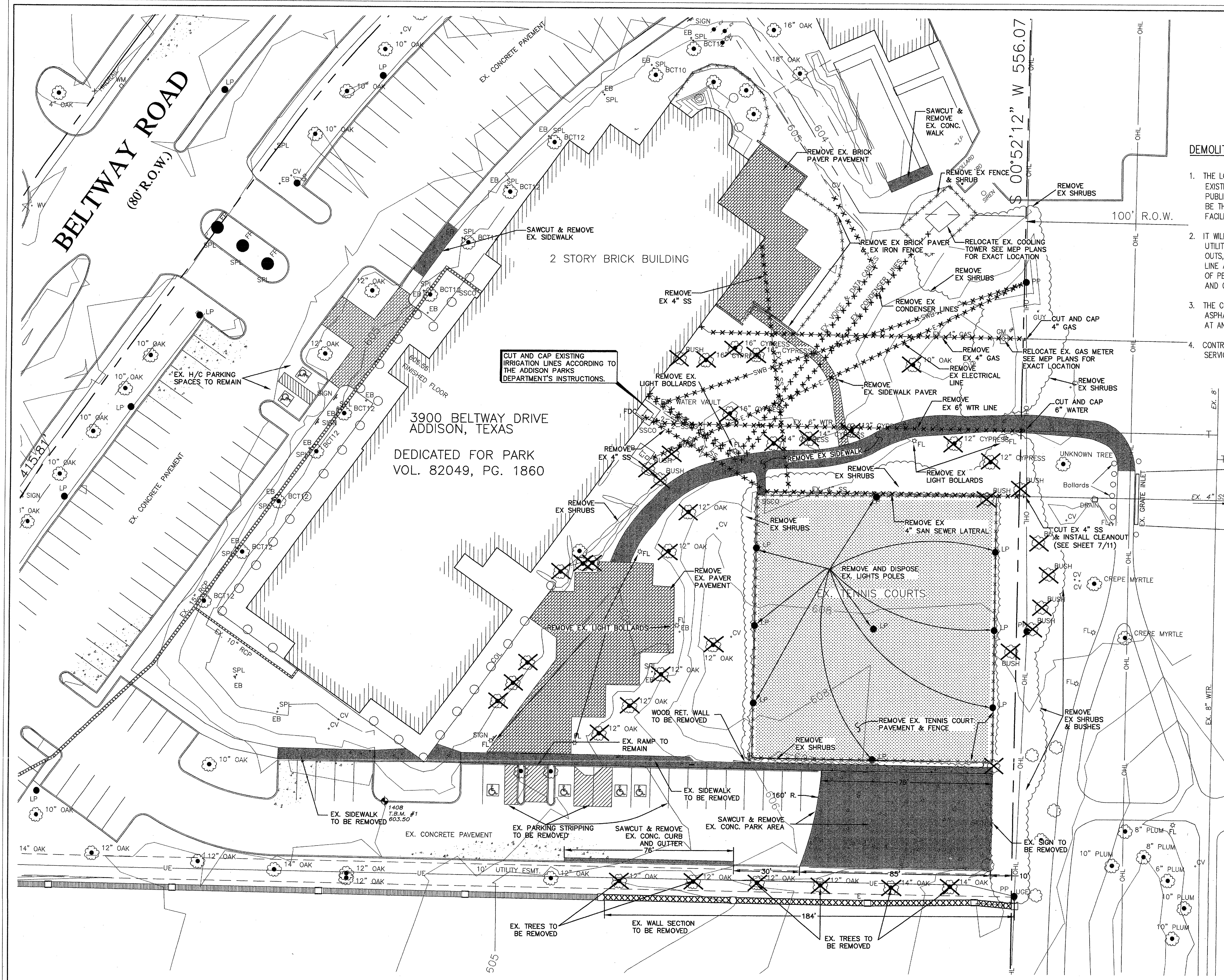


**ADDISON ATHLETIC CLUB EXPANSION AND LEISURE POOL**  
 ADDISON, TEXAS

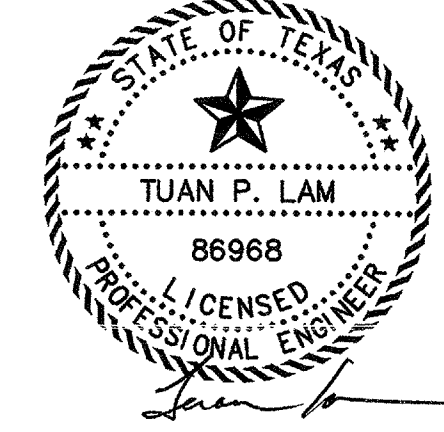
**RON HOBBS ARCHITECTS**

614 W. MAIN ST. SUITE #200 GARLAND, TEXAS 75040  
 (972) 494-0174 FAX (972) 494-0772



- DEMOLITION NOTES:**
1. THE LOCATION OF ALL UTILITIES LOCATED ON THESE PLANS ARE TAKEN FROM EXISTING PUBLIC RECORDS. THE EXACT LOCATION AND ELEVATION OF ALL PUBLIC UTILITIES MUST BE DETERMINED BY THE CONTRACTOR. IT SHALL BE THE DUTY OF THE CONTRACTOR TO ASCERTAIN WHETHER ANY ADDITIONAL FACILITIES OTHER THAN THOSE SHOWN ON THE PLANS MAY BE PRESENT.
  2. IT WILL BE THE RESPONSIBILITY OF THE CONTRACTOR TO PROTECT ALL PUBLIC UTILITIES IN THE CONSTRUCTION OF THIS PROJECT. ALL MANHOLES, CLEAN-OUTS, VALVE BOXES, FIRE HYDRANTS, ETC. MUST BE ADJUSTED TO PROPER LINE AND GRADE BY THE CONTRACTOR PRIOR TO AND AFTER THE PLACING OF PERMANENT PAVING. UTILITIES MUST BE MAINTAINED TO PROPER LINE AND GRADE DURING CONSTRUCTION OF THE PAVING FOR THIS DEVELOPMENT.
  3. THE CONTRACTOR SHALL DISPOSE OF ALL REMOVED CONCRETE PAVEMENT, ASPHALT PAVEMENT, AND ITEMS SHOWN AS REMOVED IN A LAWFUL MANNER AND AT AN APPROVED DUMP SITE.
  4. CONTRACTOR MUST PROVIDE WATER, SEWER, GAS, PHONE, AND ELECTRICAL SERVICES TO THE EXISTING BUILDING AT ALL TIMES.

- LEGEND:**
- Light Bollard
  - Tree
  - Area Drain
  - Water Meter
  - Telephone Riser
  - Signal Box
  - T Water Valve
  - Remove Concrete Pavement
  - ▨ Brick Paver
  - ✕ Tree To Be Removed
  - Concrete Pavement
  - Ex. Concrete Pavement To Be Removed
  - ✕✕✕ Ex. Utility To Be Removed
  - Manhole
  - Cleanout
  - PK Nail
  - Electric Box
  - Sign
  - Fire Hydrant
  - Bush/Shrub



THE SEAL APPEARING ON THIS DOCUMENT WAS AUTHORIZED BY TUAN P. LAM, P.E. 88968 ON 02-20-02. ALTERATION OF A SEALED DOCUMENT WITHOUT THE PROPER NOTIFICATION TO THE RESPONSIBLE ENGINEER IS AN OFFENSE UNDER THE TEXAS ENGINEERING PRACTICE ACT.

**DEMOLITION PLAN**

**ADDISON ATHLETIC CLUB EXPANSION & LEISURE POOL**

**ADDISON, TEXAS**

**R-DELTA ENGINEERS, INC.**  
 618 MAIN STREET GARLAND, TEXAS 75040  
 Phone (972) 494-5031 www.rdelta.com

DESIGN: CTL	CHECK: JRP	SCALE: 1"=20'	2 of 11
DRAWN: CTL	DATE: FEBRUARY, 2002	PROJECT: 982-01	