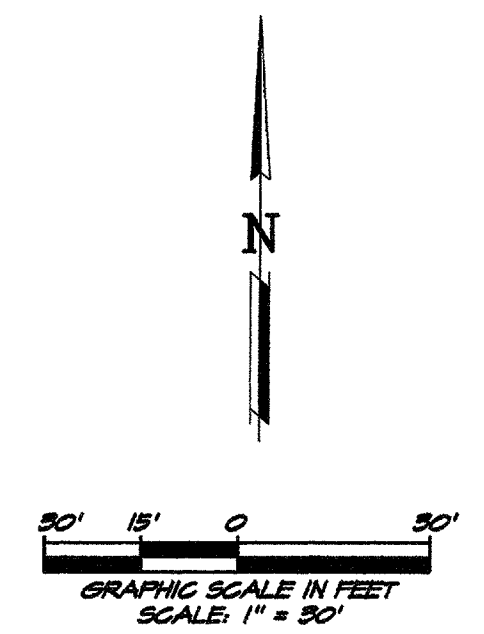
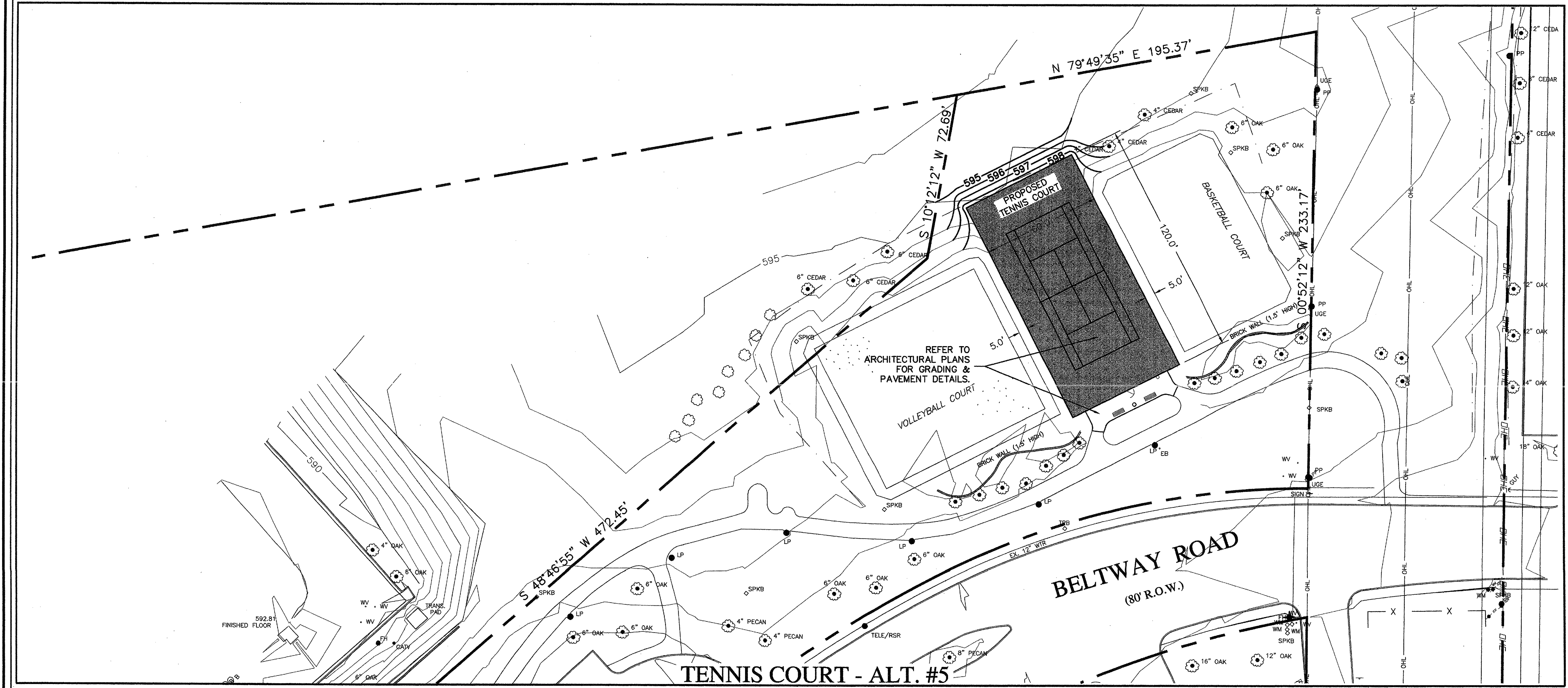
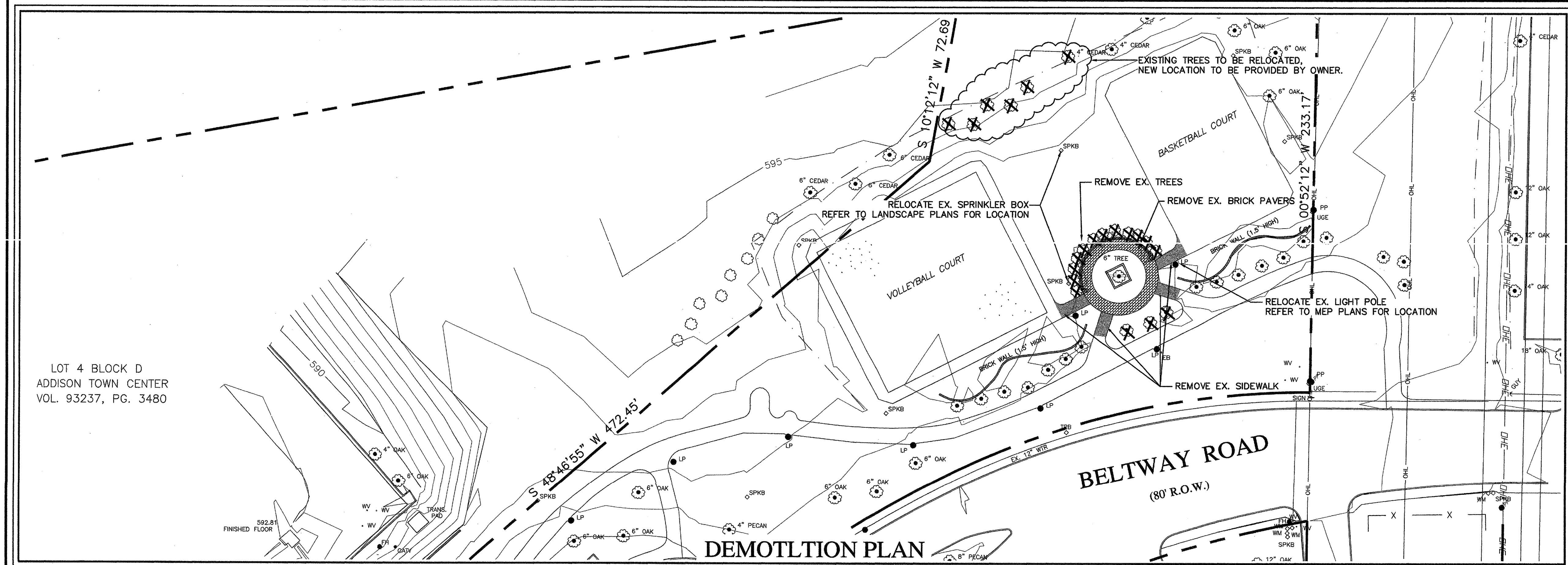


ISSUE DATE	FEB. 20, 2002
REVISIONS	

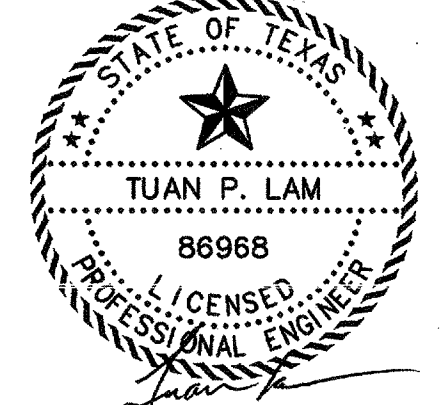
**ADDISON ATHLETIC CLUB EXPANSION
AND
LEISURE POOL
ADDISON, TEXAS**

RON HOBBS ARCHITECTS
614 W. MAIN ST. SUITE #200 GARLAND, TEXAS 75040
(972) 494-0774



LEGEND:

- * Light Bollard
- Tree
- Area Drain
- Water Meter
- Telephone Riser
- Signal Box
- T Water Valve
- 8" SS Sanitary Sewer Line
- 6" WTR Water Line
- 8" PVC Storm Drain Pipe
- Proposed Manhole
- Existing Manhole
- Cleanout
- PK Nail
- Electric Box
- Sign
- ◇ Fire Hydrant
- Bush/Shrub
- E Underground Electric
- ✕ Ex. Tree To Be Removed



THE SEAL APPEARING ON THIS DOCUMENT WAS AUTHORIZED BY
TUAN P. LAM, P.E. 86968 ON 02-20-02 ALTERATION OF
A SEALED DOCUMENT WITHOUT THE PROPER NOTIFICATION TO
THE RESPONSIBLE ENGINEER IS AN OFFENSE UNDER THE TEXAS
ENGINEERING PRACTICE ACT.

**TENNIS COURT ALT. # 5
ADDISON ATHLETIC CLUB
EXPANSION & LEISURE POOL
ADDISON, TEXAS**

R-DELTA ENGINEERS, INC.
618 MAIN STREET GARLAND, TEXAS 75040
Phone (972) 494-5031 www.rdelta.com

DESIGN: CTL	CHECK: JRP	SCALE: 1"=30'	9 of 11
DRAWN: CEM	DATE: FEBRUARY, 2002	PROJECT: 982-01	

JOB NUMBER

0012

SHEET NAME
ALTERNATE "A"
TENNIS COURT
SHEET NUMBER
C109