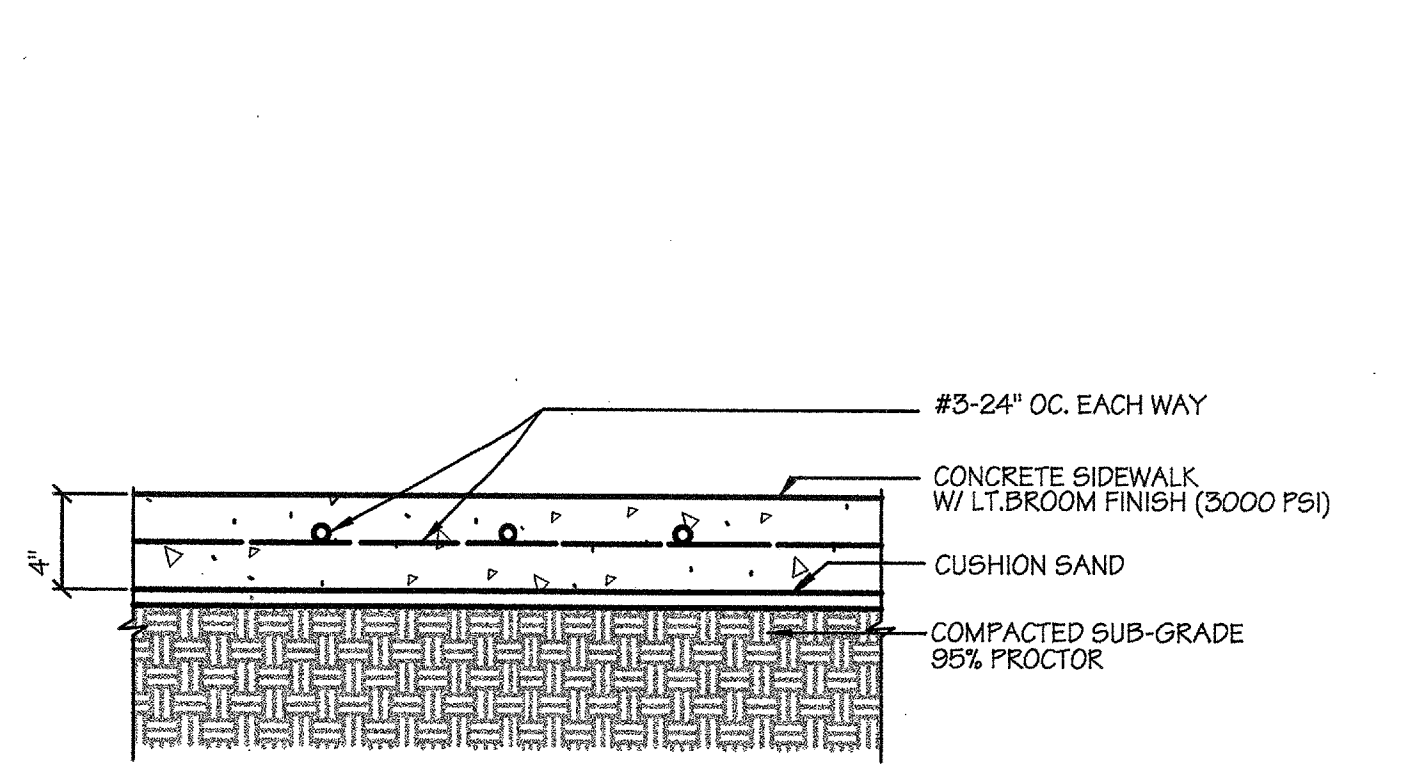
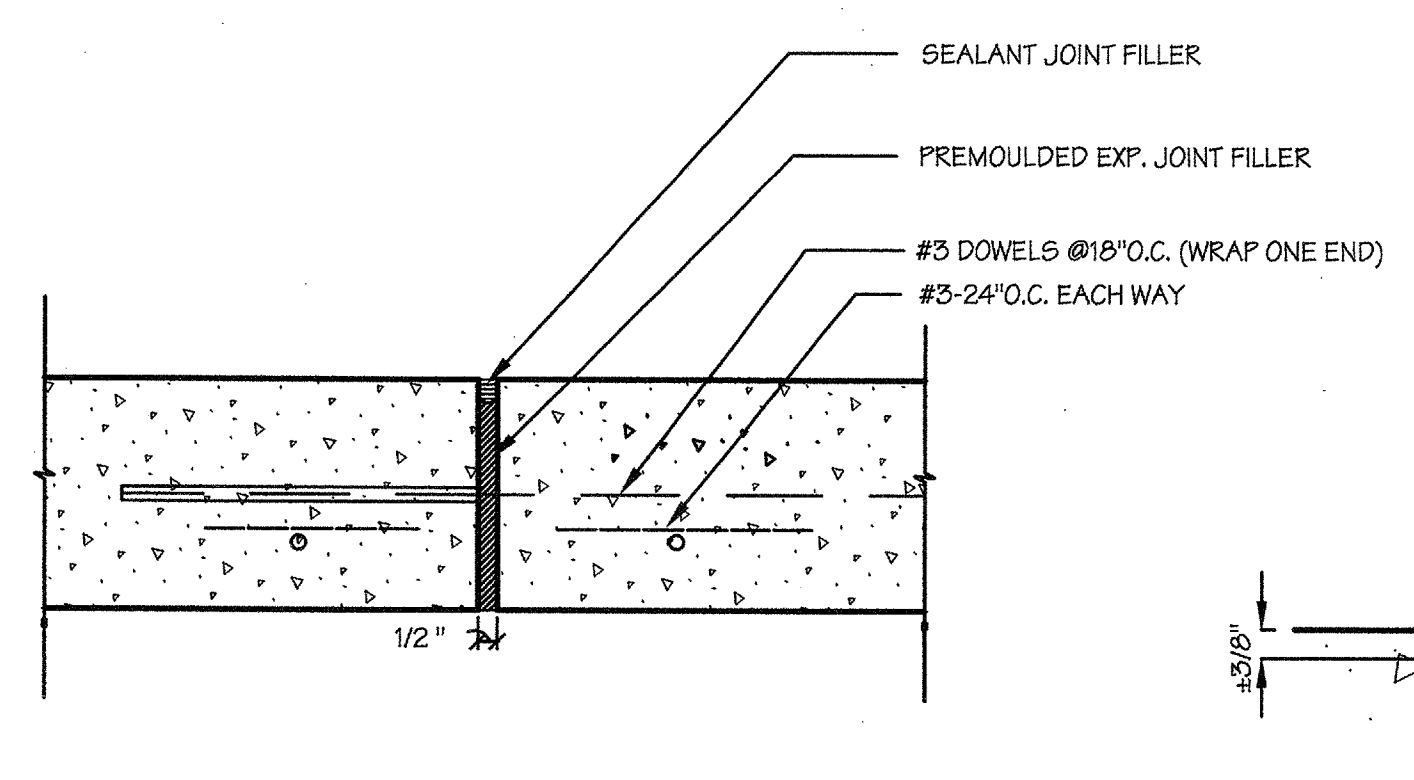


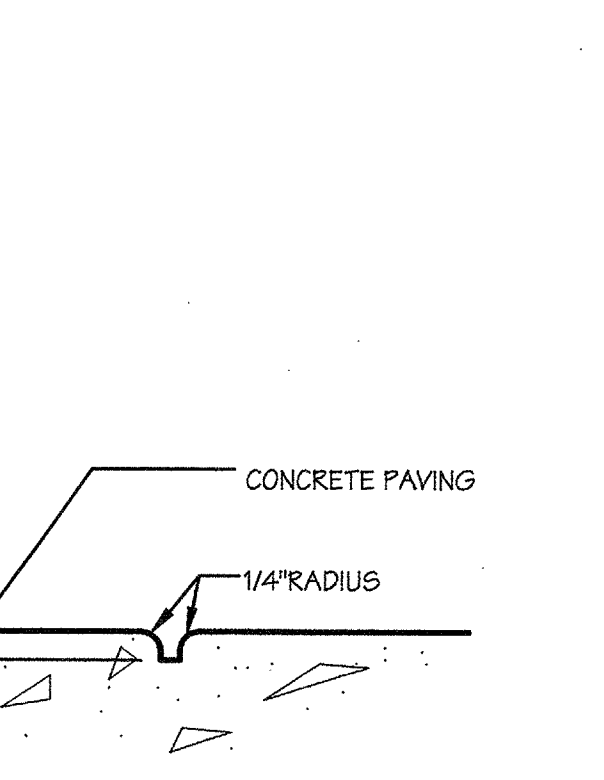
ISSUE DATE	02-20-02	BID SET
REVISIONS		
Δ 01-17-02 FENCE DETAIL		
CLARIFICATION		



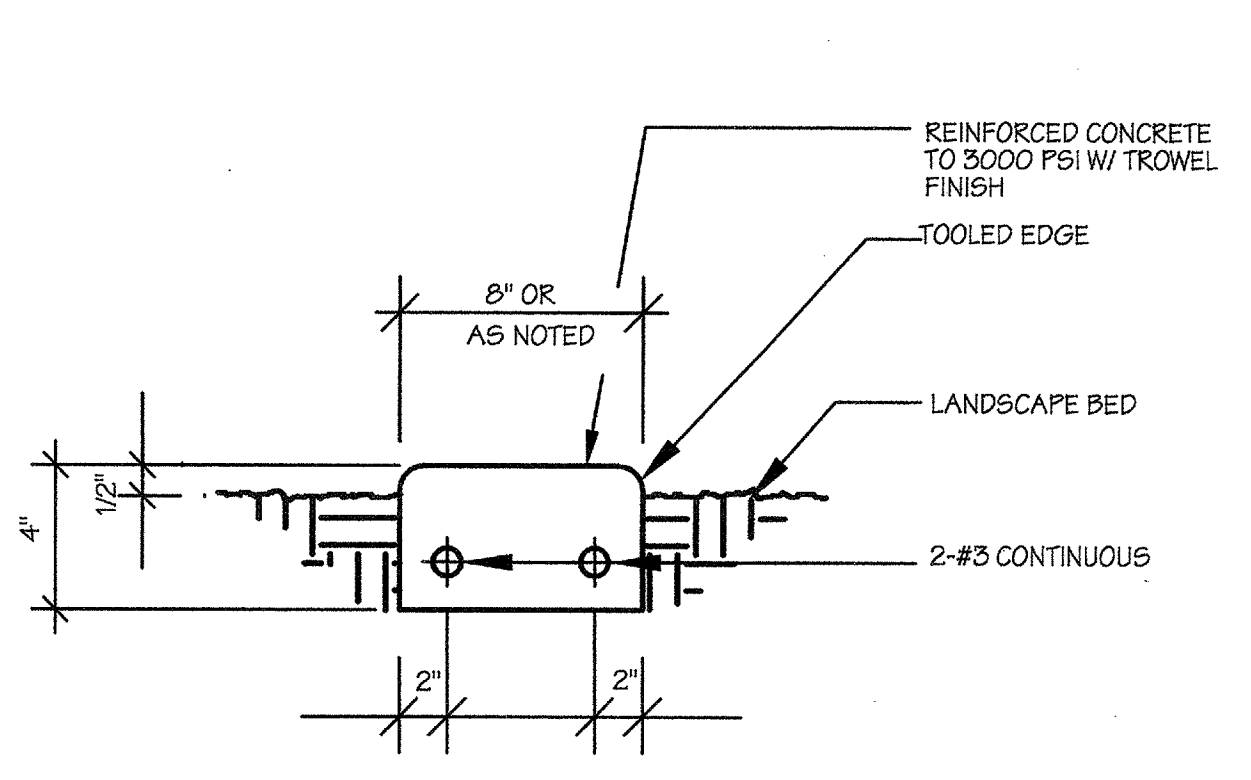
A CONCRETE PEDESTRIAN PAVING
SCALE: 1 1/2\"/>



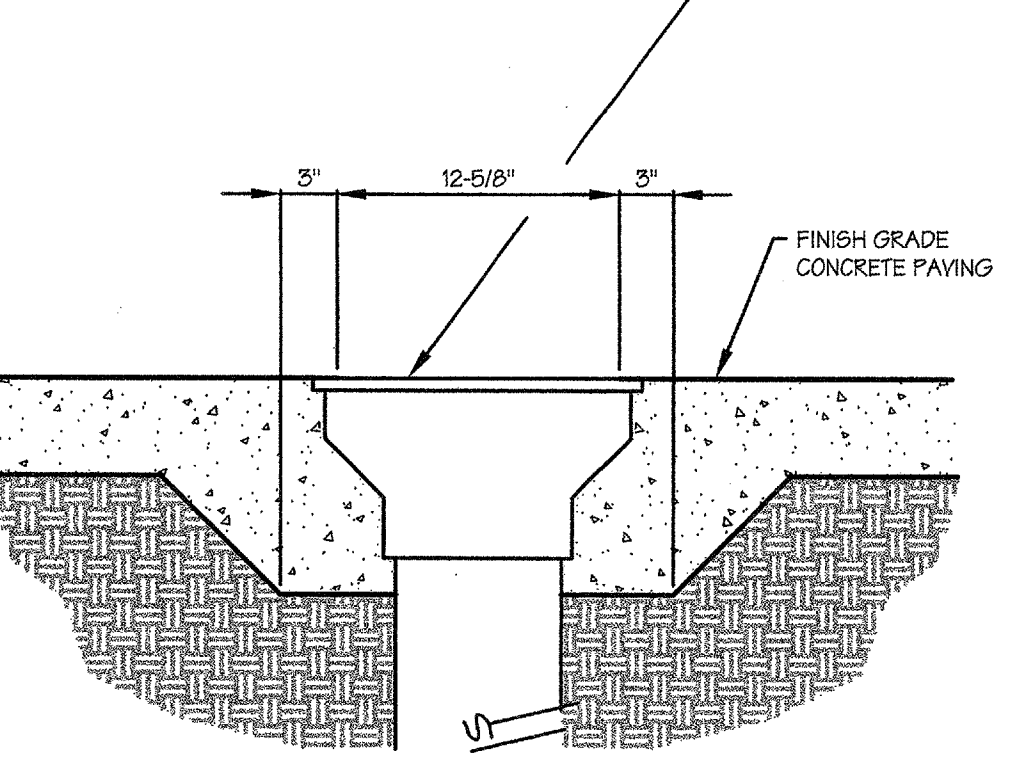
B EXPANSION JOINT
SCALE: 3\"/>



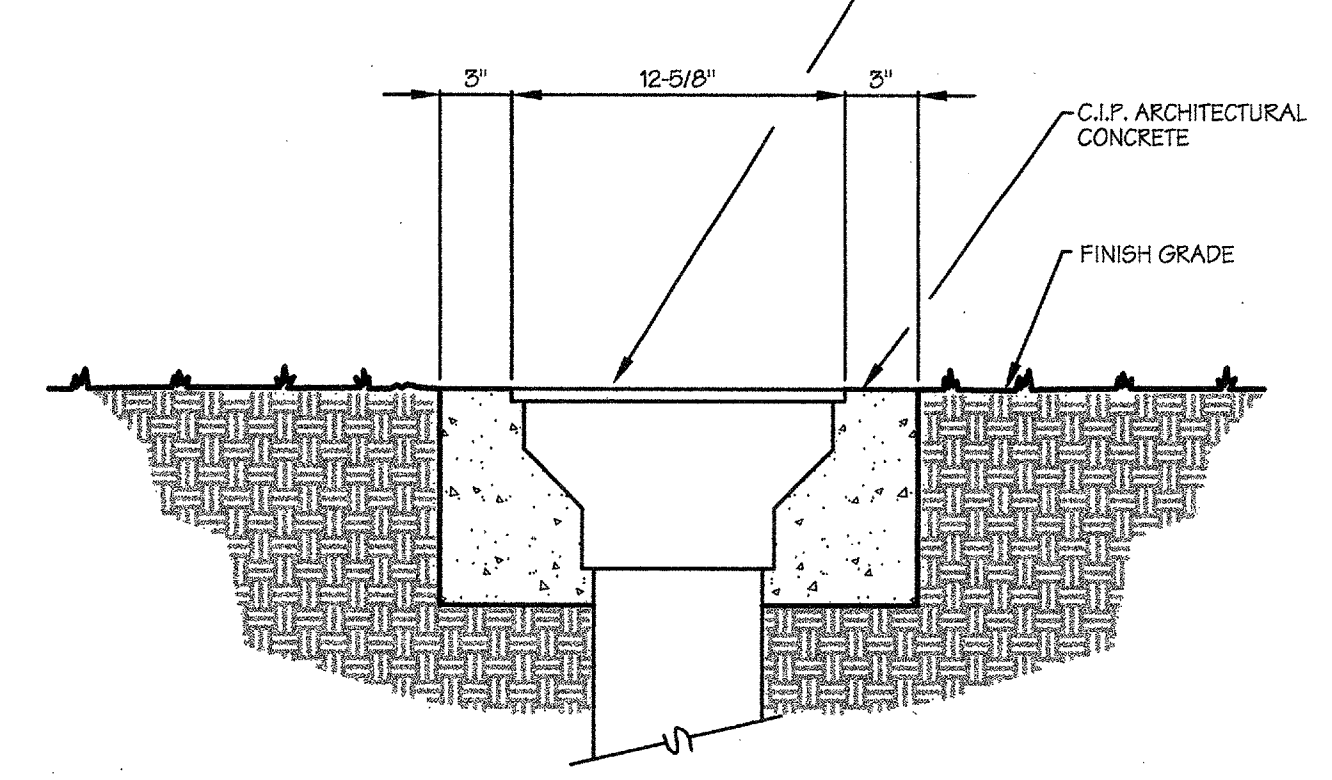
C TOOLED SCORE JOINT
SCALE: 3\"/>



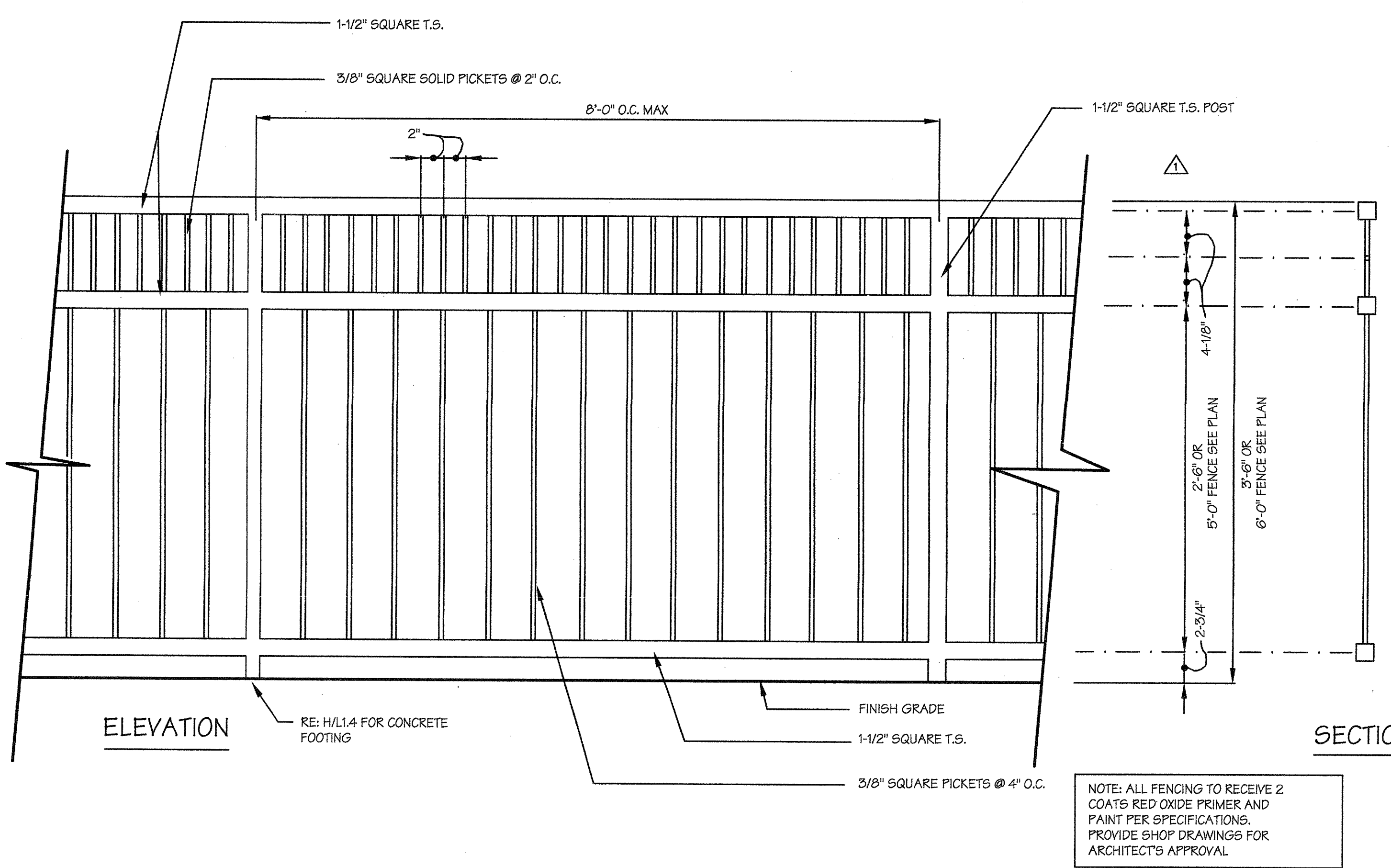
D CONCRETE MOWSTRIP
SCALE: N.T.S.



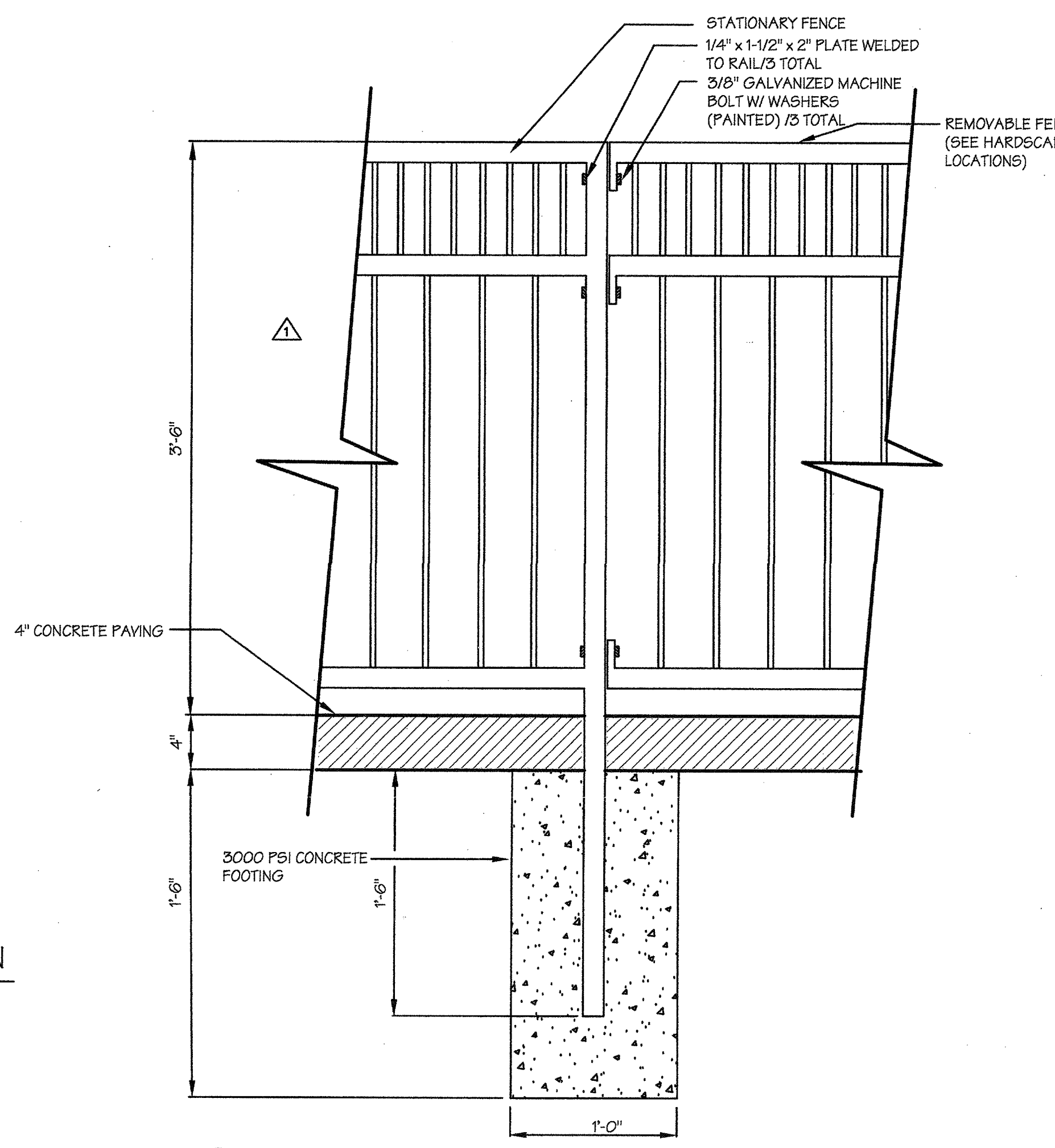
E PAVING AREA DRAIN
SCALE: 3\"/>



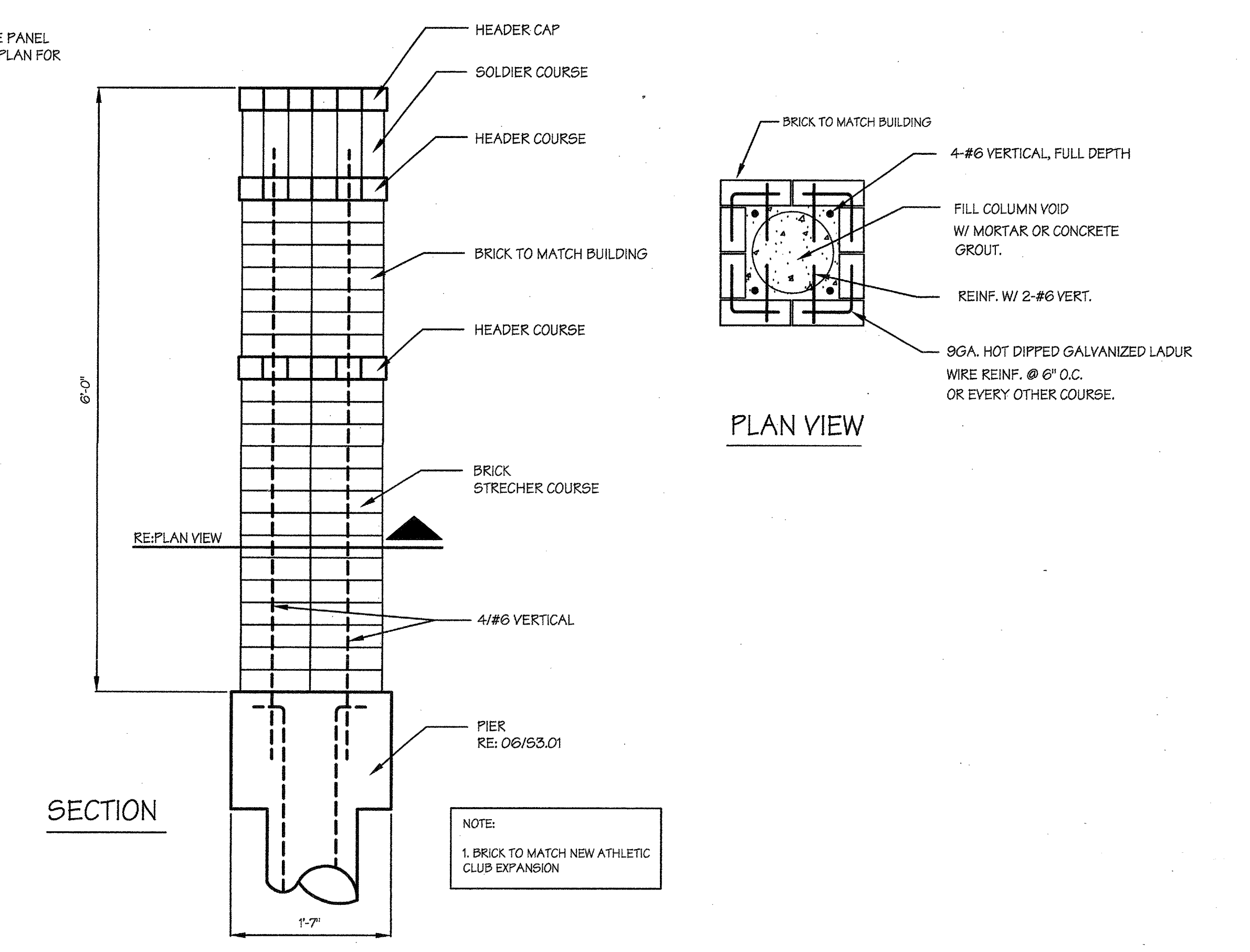
F LANDSCAPE AREA DRAIN
SCALE: 3\"/>



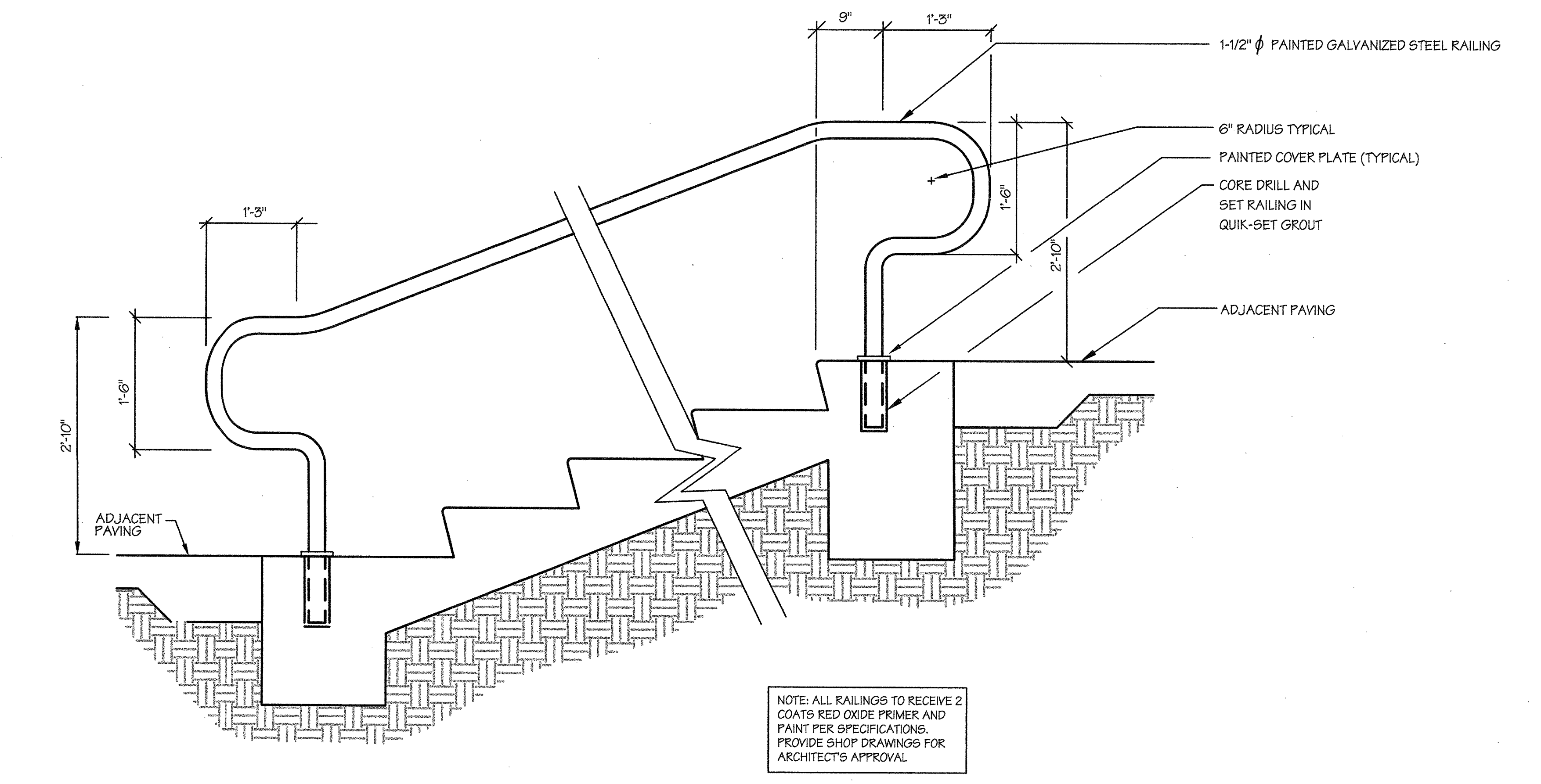
G 42' & 6'-0" ORNAMENTAL FENCE
SCALE: 1-1/2\"/>



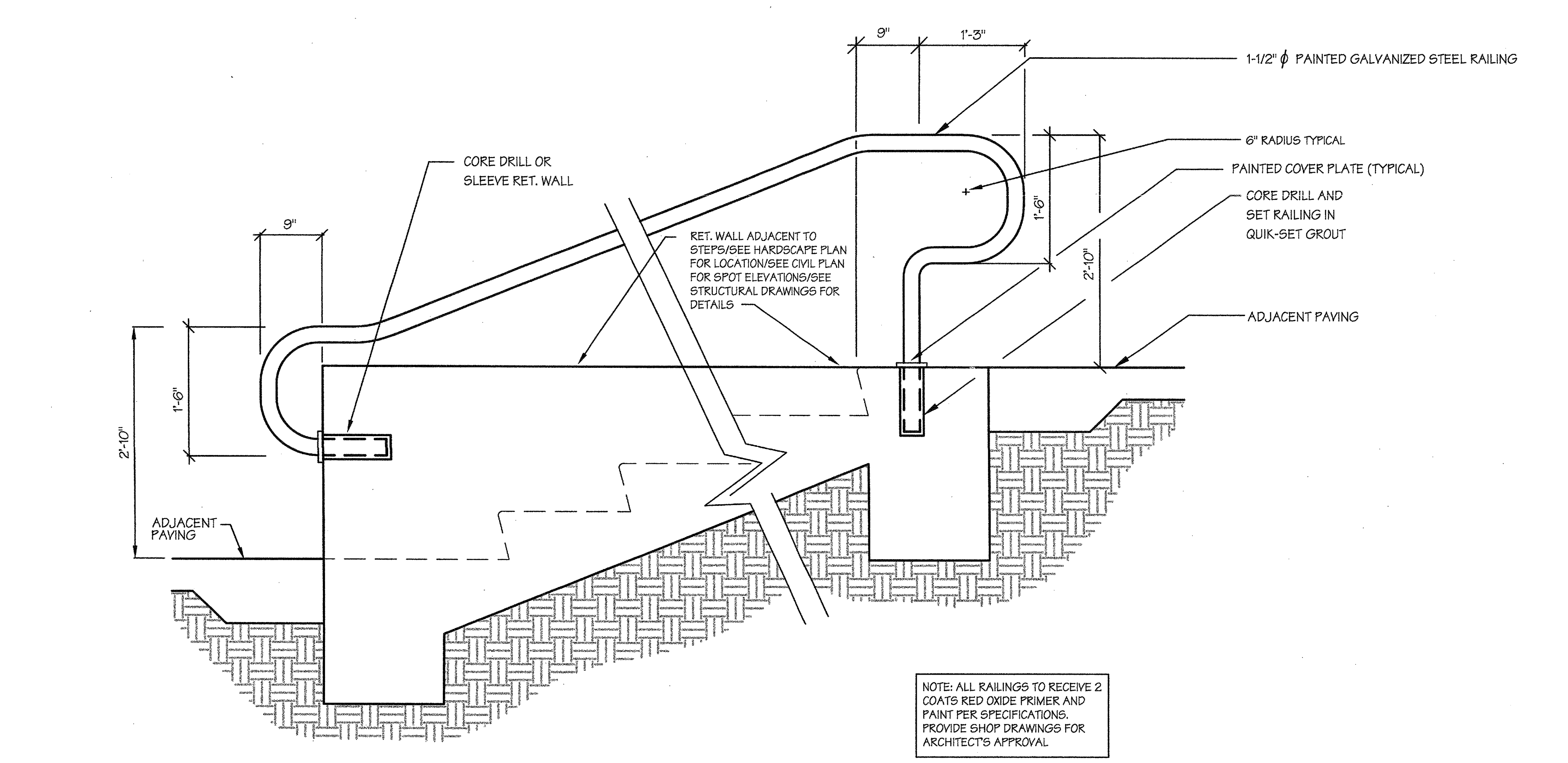
H REMOVABLE FENCE PANEL
SCALE: 1-1/2\"/>



I BRICK COLUMN
SCALE: 1\"/>



J RAILING SECURED TO STEPS
SCALE: 1\"/>

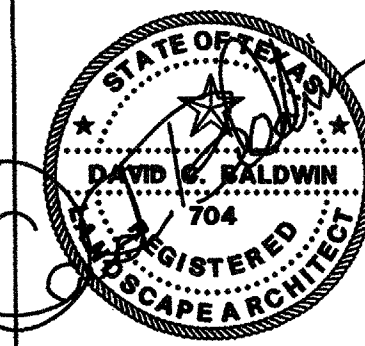


K RAILING SECURED TO ADJACENT RET. WALL
SCALE: 1\"/>

ADDISON ATHLETIC CLUB EXPANSION AND LEISURE POOL
 ADDISON, TEXAS

RON HOBBS ARCHITECTS
 614 W. MAIN ST., SUITE #200 GARLAND, TEXAS 75040
 (972) 494-0174 FAX (972) 494-0722

DAVID C. BALDWIN INCORPORATED
 LANDSCAPE ARCHITECTURE PLANNING
 5544 ESCROWING AVENUE DALLAS, TEXAS 75206
 P.O. BOX 214-821, DALLAS, TEXAS 75201
 (972) 494-2562



JOB NUMBER
HARDSCAPE DETAILS
 0012

SHEET NUMBER
L1.4

DAVID C. BALDWIN, INC. FILE
 Drawing No. 0000-11-16-0000
 Date: 02/20/2002