

ISSUE DATE  
02-20-02

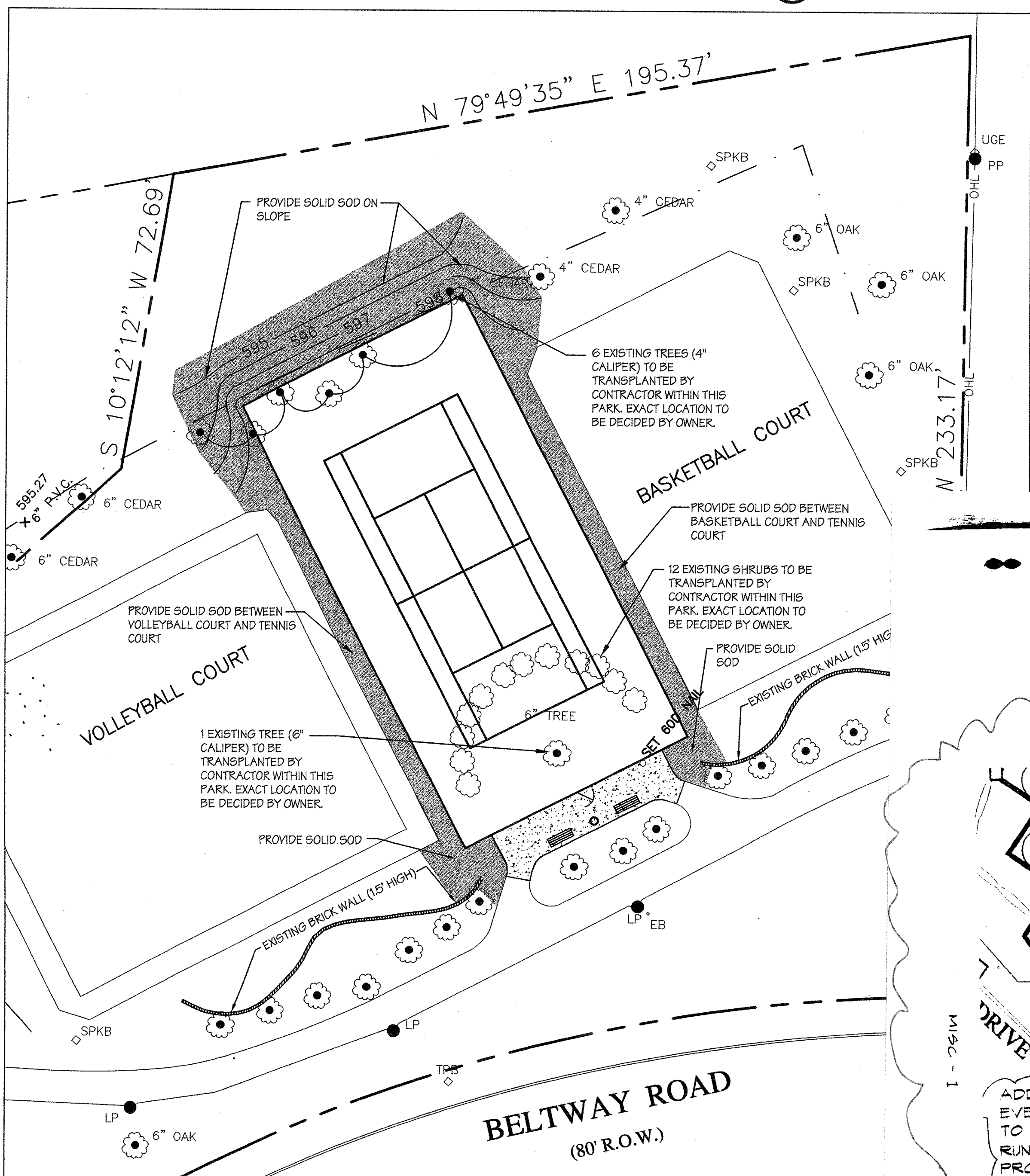
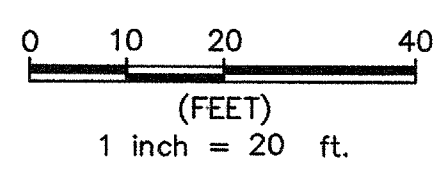
BID SET

REVISIONS

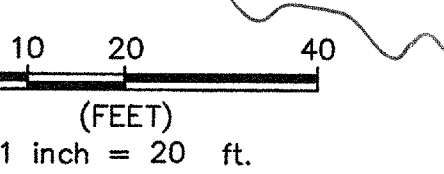
8-13-02	OWNER REVIEW
1-20-03	CLARIFICATIONS DURING CONSTRUCTION
2-27-03	CHANGE EASTERN RED CEDAR TO WEeping LOVE GRASS

**ADDISON ATHLETIC CLUB EXPANSION AND LEISURE POOL**  
 ADDISON, TEXAS

**A ALTERNATE No. 1 LANDSCAPE PLAN**  
 SCALE: 1"=20'-0"

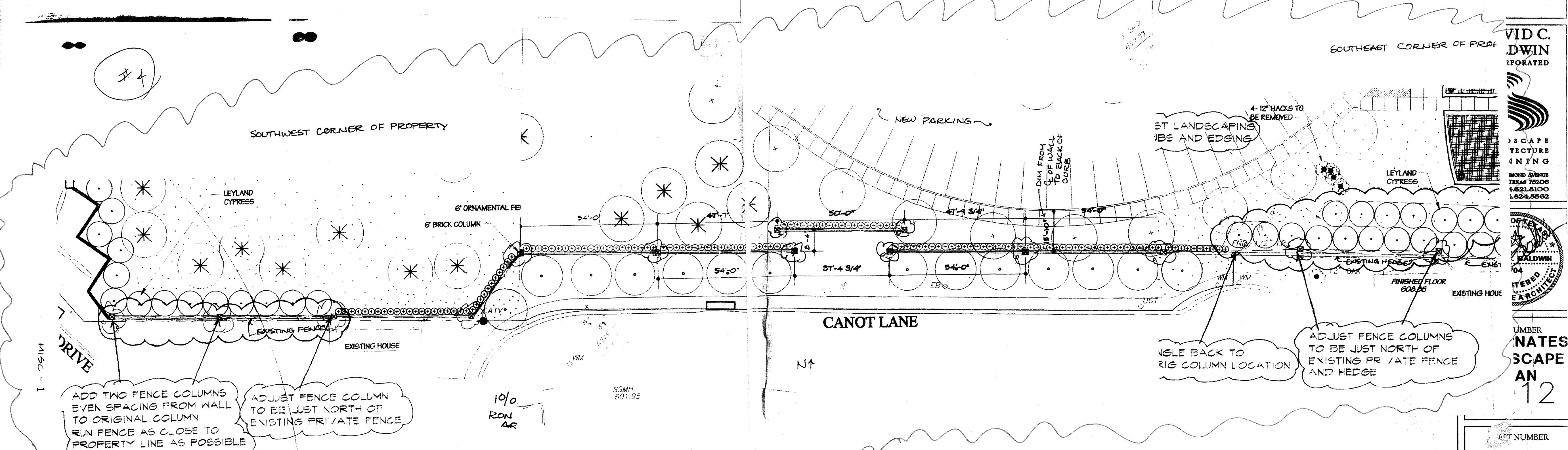


**B ALTERNATE No. 5 LANDSCAPE PLAN**  
 SCALE: 1"=20'-0"



**ALTERNATE No. 1 PLANT LIST**

KEY	QTY.	COMMON NAME	BOTANICAL NAME	SIZE	REMARKS
BCA	21	BALD CYPRESS	<i>Taxodium distichum</i>	100 gallon, minimum 3-1/2" caliper x 18" ht. x 6" spread.	Container-grown; full head.
ERC	41	EASTERN RED CEDAR	<i>Juniperus virginiana</i>	100 gallon, minimum 3-1/2" caliper x 10'-12" ht.	Field-selected B&B, full to the ground
SGA	15	SWEET GUM	<i>Liquidambar styraciflua</i>	100 gallon, minimum 3-1/2" caliper x 15" ht. x 5" spread.	Container-grown; MATCHED. Branching at 5' ht. min.
LOA	16	LIVE OAK	<i>Quercus virginiana</i>	100 gallon 3-1/2" caliper; minimum 15" ht. and 6" spread.	Container-grown; full head; MATCHED.
NPHA	145	NEEDLEPOINT HOLLY	<i>Ilex cornuta 'Needlepoint'</i>	5 gallon; minimum 20" ht. and 18" spread.	Full-to-ground; plant 24" o.c.
CFA	8	CHINESE PISTACHE	<i>Pistacia chinensis</i>	100 gallon; min. 15" ht. and 6" spread.	Container-grown; Full; matchfaced; specimen quality
WIGA	334	WEeping LOVE GRASS	<i>Eragrostis curvula</i>	1 gallon	Full; plant 24" o.c.
AJA	685	ASIAN JASMINE	<i>Trachelospermum asiaticum</i>	1 gallon (minimum 3 runners at 12" long)	Full; plant 18" o.c.



**J HOBBS ARCHITECTS**  
 614 W. MAIN ST. SUITE #200 GARLAND, TEXAS 75040  
 (972) 494-0174 FAX (972) 494-0772

VID C. DWIN FORKATED

SCAPE STRUCTURE FINISHING

NUMBER NATES SCAPE AN 12

NUMBER L2.2