

### ROOM FINISH SCHEDULE - FIRST FLOOR

ROOM NO.	ROOM NAME	FLOOR	BASE	CEILING	CLD. HGT.	WALLS								REMARKS		
						NORTH	NE	EAST	SE	SOUTH	SW	WEST	NW			
101	MEN	SC	-	CP	10'-8 3/8"	CMU-S	-	CMU-S	-	CMU-S	-	CMU-S	-	-	-	-
102	WOMEN	SC	-	CP	10'-8 3/8"	CMU-S	-	CMU-S	-	CMU-S	-	CMU-S	-	-	-	-
103	MECHANICAL	CONC	-	CONC	10'-8 3/8"	CMU	-	CMU	-	CMU	-	CMU	-	-	-	-
104	VENDING	CONC	-	CP	10'-8 3/8"	CMU	-	CMU	-	CMU	-	CMU	-	-	-	-
105	ENTRY	CONC	-	CP	10'-8 3/8"	CMU	-	CMU	-	CMU	-	CMU	-	-	-	-
106	MECHANICAL	CONC	-	CONC	10'-8 3/8"	CMU	-	CMU	-	CMU	-	CMU	-	-	-	-
107	PICNIC	CONC	-	CP	10'-8 3/8"	CMU	-	CMU	-	CMU	-	CMU	-	-	-	-
108	MECHANICAL	CONC	-	CONC	10'-8 3/8"	CMU	-	CMU	-	CMU	-	CMU	-	-	-	-
109	PICNIC	CONC	-	CP	10'-8 3/8"	CMU	-	CMU	-	CMU	-	CMU	-	-	-	-
110	MECHANICAL	CONC	-	CONC	10'-8 3/8"	CMU	-	CMU	-	CMU	-	CMU	-	-	-	-
111	PICNIC	CONC	-	CP	10'-8 3/8"	CMU	-	CMU	-	CMU	-	CMU	-	-	-	-
112	MECHANICAL	CONC	-	CONC	10'-8 3/8"	CMU	-	CMU	-	CMU	-	CMU	-	-	-	-
113	POOL EQUIPMENT	SC	-	CP	10'-8 3/8"	CMU-S	-	CMU-S	-	CMU-S	-	CMU-S	-	-	-	-
114	CO2	SC	-	CP	12'-8 3/8"	CMU-S	-	CMU-S	-	CMU-S	-	CMU-S	-	-	-	-
115	CHLORINE	SC	-	CP	10'-8 3/8"	CMU-S	-	CMU-S	-	CMU-S	-	CMU-S	-	-	-	-
116	STAFF AREA	SC	R	CP	12'-8 3/8"	-	CONC/TS	-	-	-	-	FEB	FEB/CS	-	-	-
117	VESTIBULE	SC	R	FEB	8'-0"	-	FEB	-	-	-	-	FEB	-	-	-	-
118	STAIR	C-1	R	FEB	24'-0"	-	FEB	-	-	-	-	FEB	-	-	-	-
119	HALL	C-3	WD	FEB	10'-0"	-	FEB	-	FEB/CS	-	FEB/TS	-	FEB	-	-	-
120	HALL	C-3	WD	FEB	10'-0"	-	FEB	-	-	-	-	FEB	-	-	-	-
121	MULTI-PURPOSE	EX	EX	EX	10'-0"	-	FEB	-	FEB/CS	-	FEB	-	FEB	-	-	-
122	MULTI-PURPOSE	EX	EX	EX	10'-0"	-	FEB	-	FEB/CS	-	FEB	-	FEB/TS	-	-	-
123	STORAGE	EX	EX	EX	10'-0"	-	FEB	-	FEB	-	FEB	-	FEB/TS	-	-	-
124	EXERCISE	C-3	WD	EX	EX	-	-	-	-	EX	-	EX	-	-	-	-
125	MECHANICAL	SC	R	ES	VARIABLE	-	FEB	-	FEB	-	FEB	-	FEB	-	-	-

### schedule legend

AC = ACOUSTICAL CEILING TILE  
 AG = ALUMINUM & GLASS  
 ALUM = ALUMINUM  
 C-1 = CARPET TYPE 1  
 C-2 = CARPET TYPE 2  
 C-3 = CARPET TYPE 3  
 CG = CLEAR GLASS  
 CONC = CONCRETE  
 CP = CONCRETE - PAINTED  
 CMU = CONCRETE MASONRY UNIT  
 CMU-S = CONCRETE MASONRY UNIT - SEALED  
 EX = EXISTING TO REMAIN  
 HM = HOLLOW METAL  
 FESB = PAINTED GYPSUM BOARD  
 R = RUBBER  
 SC = SEALED CONCRETE  
 SCM = SOLID CORE WOOD  
 SB = STEEL GATE  
 STL = STEEL  
 TS = TINTED GLASS  
 WD = WOOD

### legend

C.J. = CONTROL JOINT

### wall legend

CONCRETE  
 CMU  
 FACE BRICK  
 GYP. BD. ON METAL STUDS  
 EXISTING WALL

### schedule notes

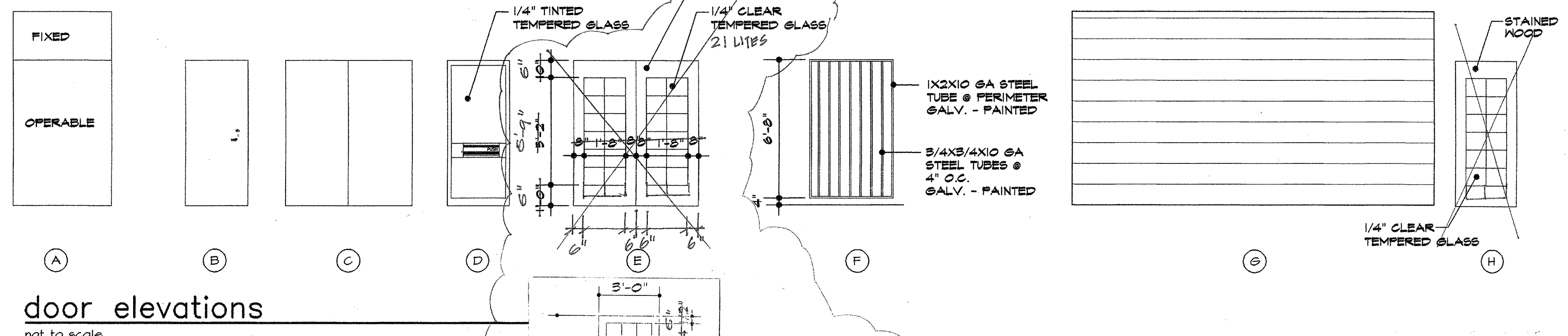
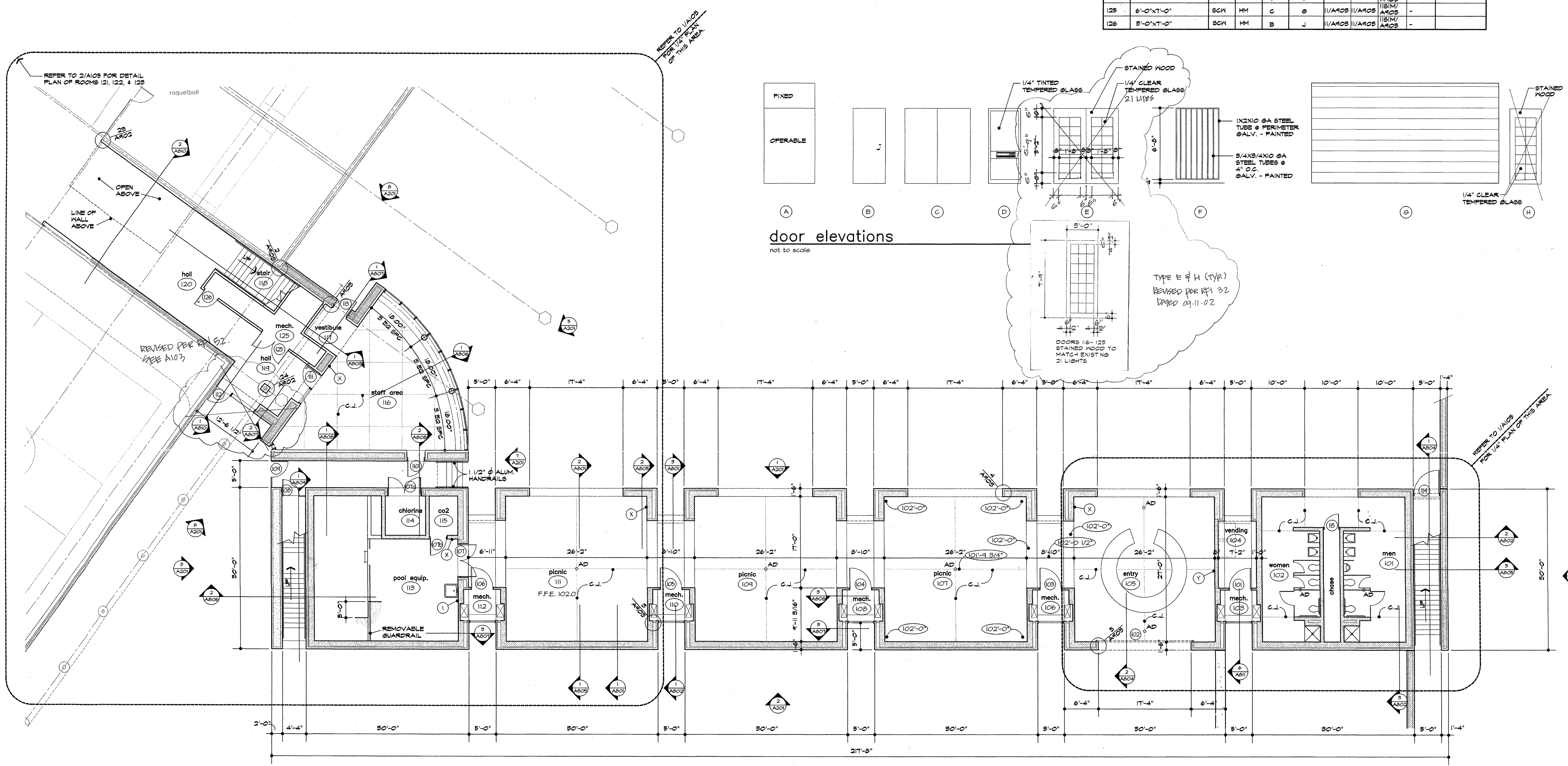
- 1/4" CLEAR TEMPERED GLASS
- 1/4" TINTED TEMPERED GLASS
- ALL DIMENSIONS ARE TO FACE OF FINISH MATERIAL UNLESS NOTED OTHERWISE.
- PROVIDE LATCH FOR PADLOCK.
- OPERABLE PORTION 1'-0" TALL.
- REPAINT WALLS IN EXISTING ROOM.
- 4" HEAD
- PROVIDE WEATHERSTRIPPING.
- INSTALL CERAMIC TILE TO 1'-2" WITH PAINTED GYP. BOARD ABOVE.
- INOPERABLE DOOR

### bath & access. legend

(A) TOILET PAPER DISPENSER  
 (B) GRAB BAR  
 (C) FRAMED MIRROR (STAINLESS STEEL)  
 (D) FEMININE NAPKIN DISPOSAL  
 (E) FRAMED MIRROR (GLASS)  
 (F) TONER DISPENSER & WASTE RECEPTACLE  
 (G) SOAP DISPENSER - WALL MOUNTED  
 (H) UNFRAMED MIRROR  
 (I) MOP & BROOM HOLDER  
 (J) CHANGING TABLE  
 (K) SHOWER ACCESSORIES  
 (L) ELECTRIC HAND DRYER  
 (M) FIRE EXTINGUISHER  
 (N) DEDICATION PLAQUE

### DOOR SCHEDULE - FIRST FLOOR

NO.	SIZE	TYPE	FRAME	ELEV.	HOW. SET	DETAILS				REMARKS
						JAMB	JAMB	HEAD	THRES.	
101	4'-0"X7'-0"	HM	HM	B	D	9/A902	9/A902	951M/A902	-	8
102	17'-4"X4'-4 3/8"	CH	STL	B	-	3/A903	3/A903	2/A904	-	-
103	4'-0"X7'-0"	HM	HM	B	D	9/A902	9/A902	951M/A902	-	8
104	4'-0"X7'-0"	HM	HM	B	D	9/A902	9/A902	951M/A902	-	8
105	4'-0"X7'-0"	HM	HM	B	D	9/A902	9/A902	951M/A902	-	7, 8
106	4'-0"X7'-0"	HM	HM	B	D	9/A902	9/A902	951M/A902	-	8
107	6'-0"X7'-0"	HM	HM	C	C	3/A902	3/A902	2/A903	-	8
107a	6'-0"X7'-0"	HM	HM	C	C	3/A902	3/A902	2/A903	-	8
107b	5'-0"X7'-0"	HM	HM	B	I	7/A902	7/A902	751M/A902	-	-
108	3'-0"X7'-0"	SB	STL	F	-	13/A902	13/A902	-	-	4
109	3'-0"X7'-0"	SB	STL	F	-	13/A902	13/A902	-	-	4
110	3'-0"X7'-0"	HM	HM	B	B	7/A902	7/A902	751M/A902	17/A901	8
111	3'-0"X7'-0"	SCM	HM	B	E	3/A902	4/A902	951M/A902	-	-
112	3'-0"X7'-2"	AG	ALUM	D	A	20/A902	21/A902	951M/A902	18/A901	2
113	3'-0"X7'-0"	AG	ALUM	D	B	1/A903	1/A903	2151M/A903	18/A901	2
114	4'-8"X4'-4"	HM	HM	A	D	12/A903	12/A903	1251M/A903	-	5
115	2'-8"X7'-0"	HM	HM	B	I	3/A903	3/A903	951M/A903	-	-
116	3'-0"X7'-0" 7'-9"	SCM	WD	H	-	6/A903	4/A903	251M/A903	-	10
117	6'-0"X7'-0" 7'-9"	SCM	WD	E	F	14/A903	4/A903	251M/A903	-	-
118	3'-0"X7'-0" 7'-9"	SCM	WD	H	-	7/A903	4/A903	251M/A903	-	10
119	3'-0"X7'-0" 7'-9"	SCM	WD	H	-	7/A903	4/A903	251M/A903	-	10
120	3'-0"X7'-0" 7'-9"	SCM	WD	H	-	4/A903	4/A903	251M/A903	-	10
121	6'-0"X7'-0" 7'-9"	SCM	WD	E	F	4/A903	4/A903	251M/A903	-	-
122	3'-0"X7'-0" 7'-9"	SCM	WD	H	-	4/A903	4/A903	251M/A903	-	10
123	3'-0"X7'-0" 7'-9"	SCM	WD	H	-	8/A903	1251M/A903	1251M/A903	-	10
124	6'-0"X7'-0"	SCM	HM	C	B	11/A903	11/A903	1251M/A903	-	-
125	6'-0"X7'-0"	SCM	HM	C	B	11/A903	11/A903	1251M/A903	-	-
126	3'-0"X7'-0"	SCM	HM	B	J	11/A903	11/A903	1251M/A903	-	-



**1 lower level floor plan**  
 1/8"=1'-0"