

ROOM FINISH SCHEDULE - SECOND FLOOR

ROOM NO.	ROOM NAME	FLOOR	BASE	CEILING	CLG. HGT.	WALLS								REMARKS		
						NORTH	NE	EAST	SE	SOUTH	SW	WEST	NW			
201	EXERCISE	HRF 1 / HRF 2	WD	ES	15'-0"	TS	-	FSS	-	FSS/TS	-	FSS	-	-	-	-
202	ALCOVE	HRF 1	WD	FSS	11'-8"	FSS/TS	-	-	-	FSS/TS	-	-	-	-	-	-
203	EXERCISE	HRF 1 / HRF 2	WD	ES	15'-0"	TS	-	FSS	-	FSS/TS	-	FSS	-	-	-	-
204	ALCOVE	HRF 1	WD	FSS	11'-8"	FSS/TS	-	-	-	FSS/TS	-	-	-	-	-	-
205	EXERCISE	HRF 1 / HRF 2	WD	ES	15'-0"	TS	-	FSS	-	FSS/TS	-	FSS	-	-	-	-
206	ALCOVE	HRF 1	WD	FSS	11'-8"	FSS/TS	-	-	-	FSS/TS	-	-	-	-	-	-
207	EXERCISE	HRF 1 / HRF 2	WD	ES	15'-0"	TS	-	FSS	-	FSS/TS	-	FSS	-	-	-	-
208	ALCOVE	HRF 1	WD	FSS	11'-8"	FSS/TS	-	-	-	FSS/TS	-	-	-	-	-	-
209	EXERCISE	HRF 1 / HRF 2	WD	ES	15'-0"	TS	-	FSS	-	FSS/TS	-	FSS	-	-	-	-
210	ALCOVE	HRF 1	WD	FSS	11'-8"	FSS/TS	-	-	-	FSS/TS	-	-	-	-	-	-
211	CONTROL	C	WD	ES	15'-0"	FSS	-	FSS	-	FSS/TS	-	FSS/TS	-	-	-	-
212	ALCOVE	C	WD	FSS	11'-8"	FSS	-	FSS/TS	-	FSS	-	FSS/TS	-	-	-	-
213	LOUNGE	C	WD	ES	15'-4"	-	TS	-	-	FSS	-	-	-	-	-	-
214	HALL	C	WD	FSS	???	-	FSS	-	-	FSS	-	FSS	-	-	-	-
215	WOMEN	CT	CT	FSS	4'-0"	FSS/CT	FSS/CT	FSS/CT	FSS/CT	FSS/CT	FSS/CT	FSS/CT	FSS/CT	FSS/CT	FSS/CT	4
216	MEN	CT	CT	FSS	4'-0"	FSS/CT	FSS/CT	FSS/CT	FSS/CT	FSS/CT	FSS/CT	FSS/CT	FSS/CT	FSS/CT	FSS/CT	4

DOOR SCHEDULE

NO.	SIZE	TYPE	FRAME	ELEV.	HDW. SET	DETAILS			REMARKS	
						JAMB	JAMB	HEAD		
201	3'-0"x7'-0"	HM	HM	B	B	5/A902	5/A902	5B/1M/A902	5/A901	5
202	3'-0"x7'-0"	AG	ALUM	D	A	22/A902	22/A902	22/1B/1M/A902	22/A901	22
203	3'-0"x7'-0"	SCM	HM	B	H	11/A902	11/A902	11/1B/1M/A902	11/A901	11
204	3'-0"x7'-0"	SCM	HM	B	H	11/A902	11/A902	11/1B/1M/A902	11/A901	11

schedule legend

- AG-1 = ACOUSTICAL CEILING TILE TYPE "1"
- AG = ALUMINUM & GLASS
- ALUM = ALUMINUM
- C = CARPET
- CG = CLEAR GLASS
- CMU = CONCRETE MASONRY UNIT
- CMU-S = CONCRETE MASONRY UNIT - SEALED
- CONC = CONCRETE
- CP = CONCRETE - PAINTED
- CT = CERAMIC TILE
- ES = EXPOSED STRUCTURE - PAINTED
- EX-B = EXISTING BRICK
- HM = HOLLOW METAL
- FSS = PAINTED GYPSUM BOARD
- R = RUBBER
- SC = SEALED CONCRETE
- SCM = SOLID CORE WOOD
- TS = TINTED GLASS
- WD = WOOD
- HRF = HEIGHT ROOM FLOORINGS

schedule notes

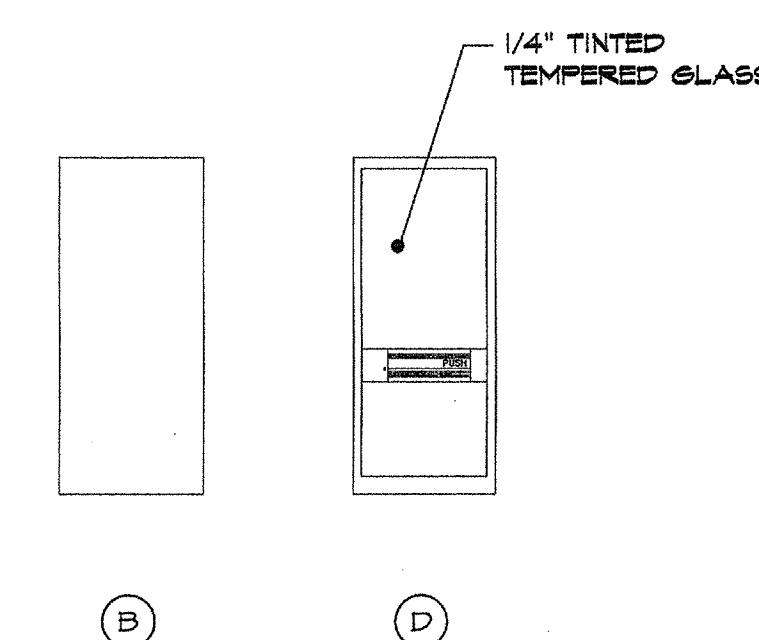
1. 1/4" CLEAR TEMPERED GLASS
2. 1/4" TINTED TEMPERED GLASS
3. ALL DIMENSIONS ARE TO FACE OF FINISH MATERIAL UNLESS NOTED OTHERWISE.
4. PROVIDE LATCH FOR PADLOCK.
5. OPERABLE PORTION 7'-0" TALL.
6. REPAINT WALLS IN EXISTING ROOM.
7. 4" HEAD
8. PROVIDE WEATHERSTRIPPING.
9. INSTALL CERAMIC TILE TO T-2" WITH PAINTED GYP. BOARD ABOVE.
10. INOPERABLE DOOR.

wall legend

- CONCRETE
- CMU
- FACE BRICK
- GYF. BD. ON METAL STUDS
- EXISTING WALL

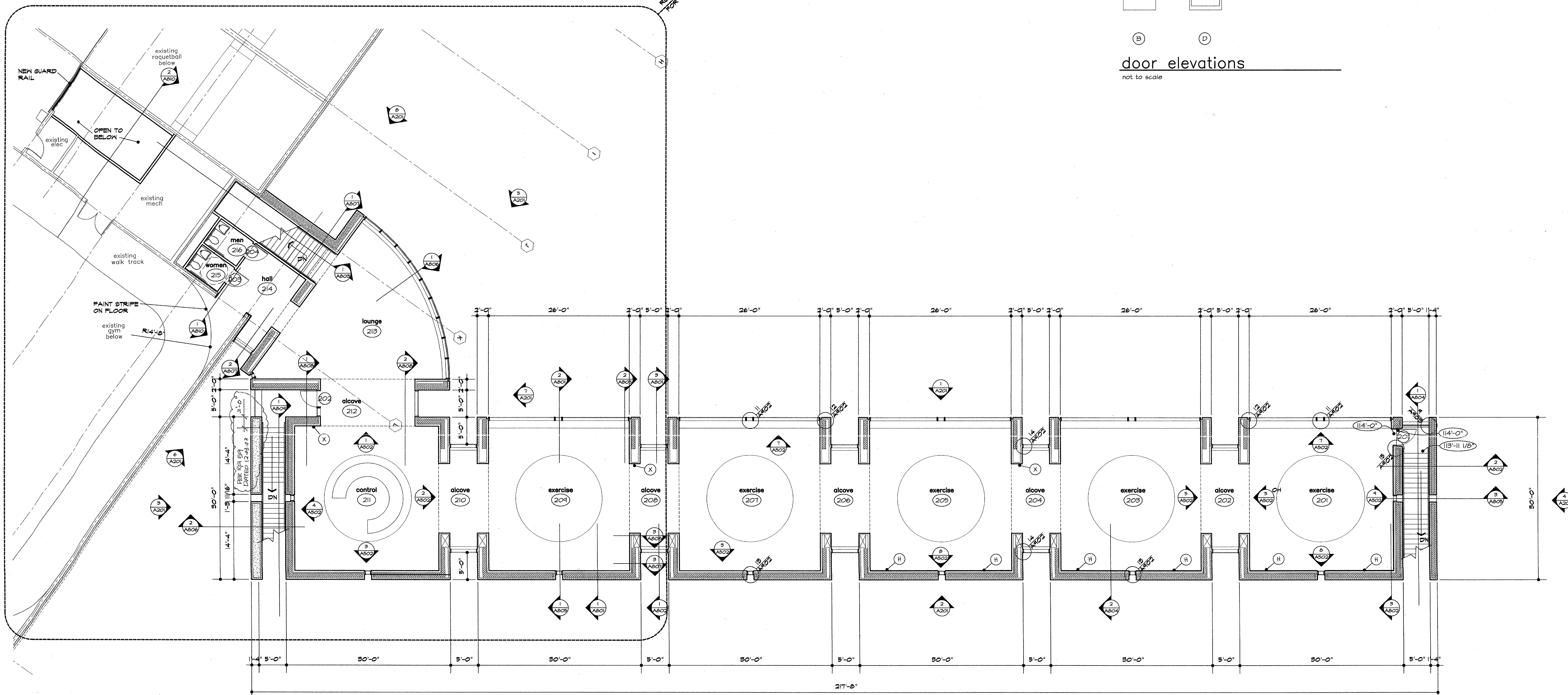
bath & access. legend

- (A) TOILET PAPER DISPENSER
- (B) GRAB BAR
- (C) FRAMED MIRROR (STAINLESS STEEL)
- (D) FEMININE NARKIN DISPOSAL
- (E) FRAMED MIRROR (GLASS)
- (F) TOWEL DISPENSER & WASTE RECEPTACLE
- (G) SOAP DISPENSER - WALL MOUNTED
- (H) UNFRAMED MIRROR
- (I) MOP & BROOM HOLDER
- (J) CHANGING TABLE
- (K) SHOWER ACCESSORIES
- (L) ELECTRIC HAND DRYER
- (M) FIRE EXTINGUISHER
- (N) DEDICATION PLAQUE



door elevations

not to scale



1 upper level floor plan

