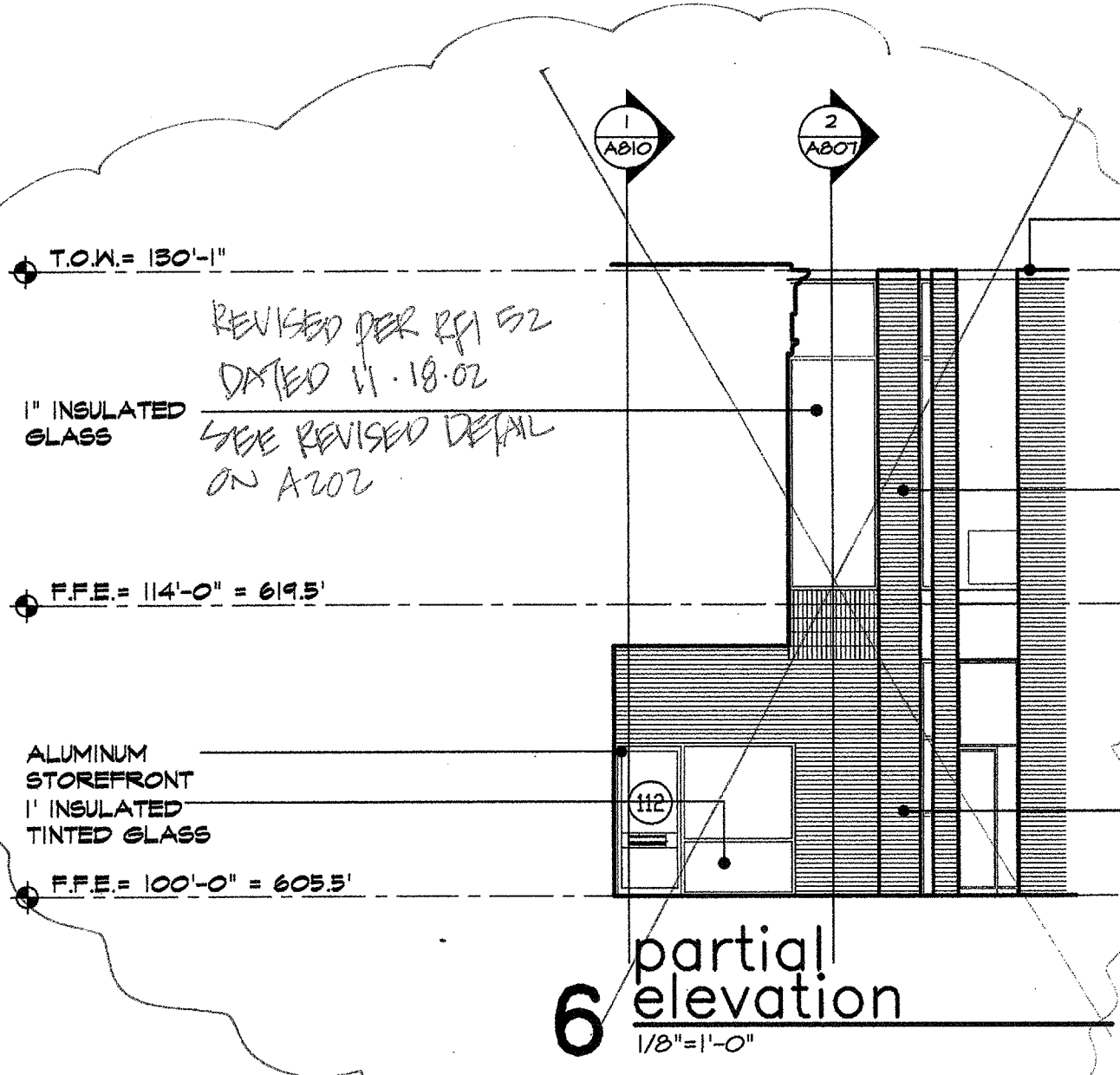
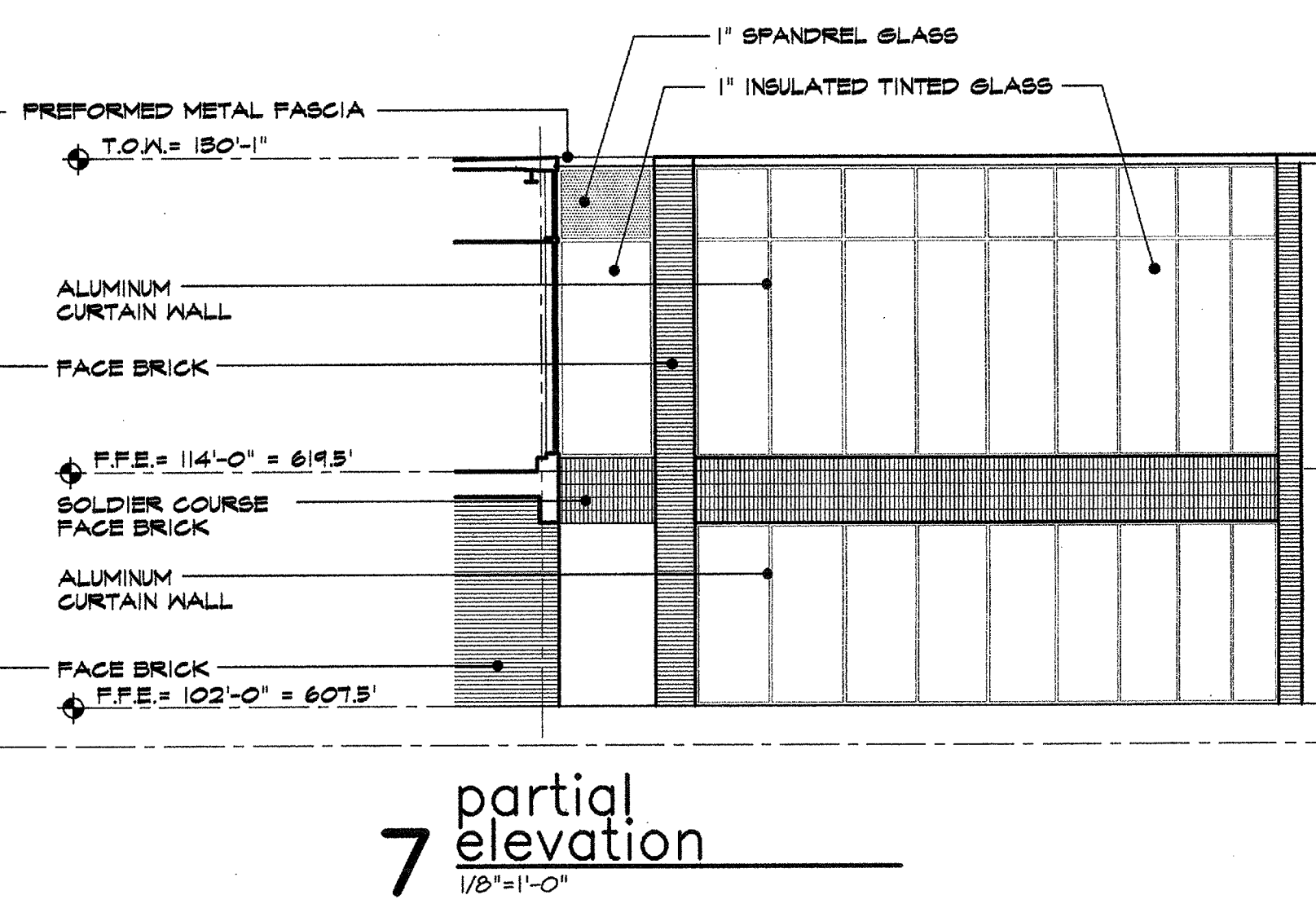


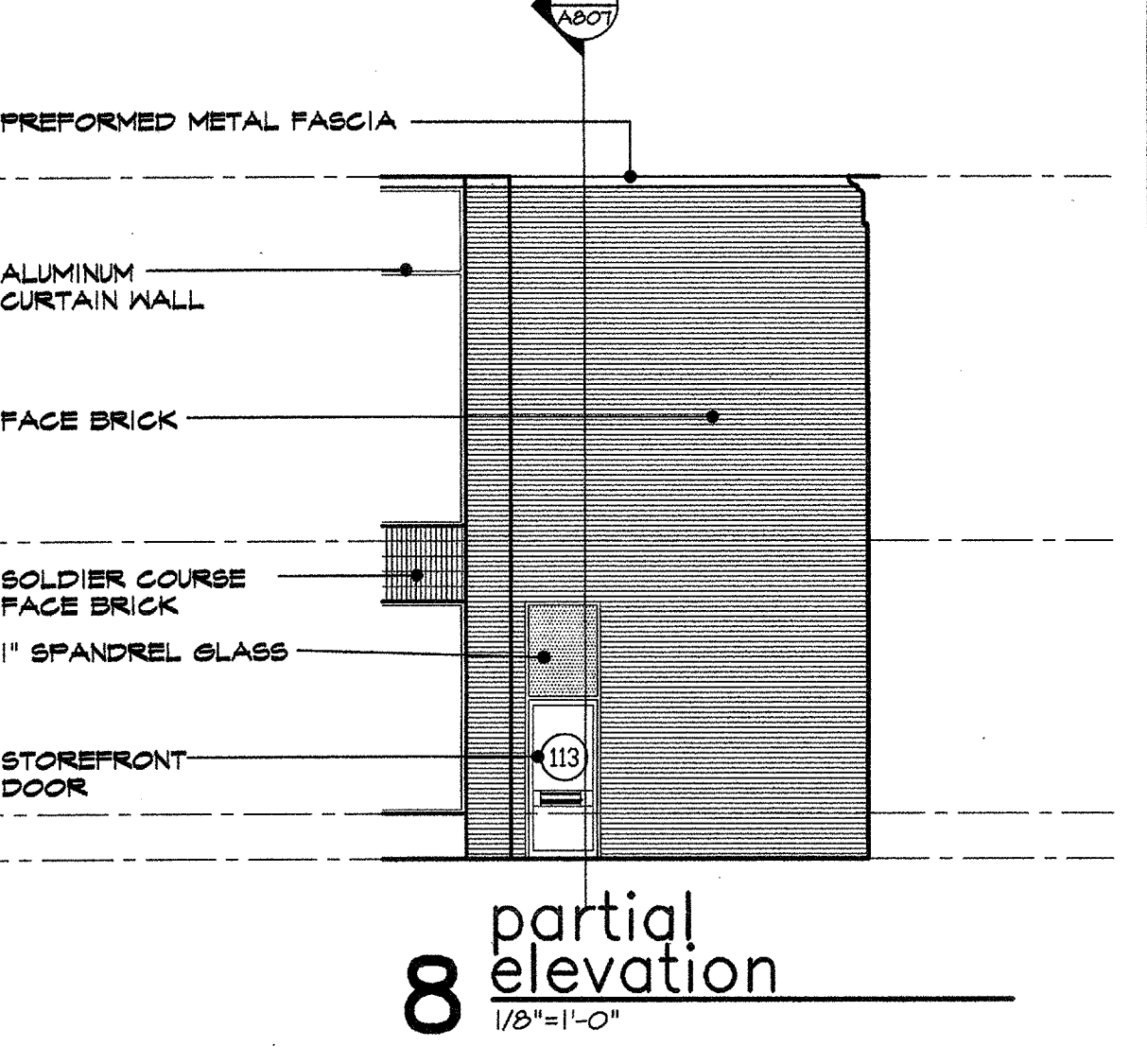
5 northeast elevation  
1/8"=1'-0"



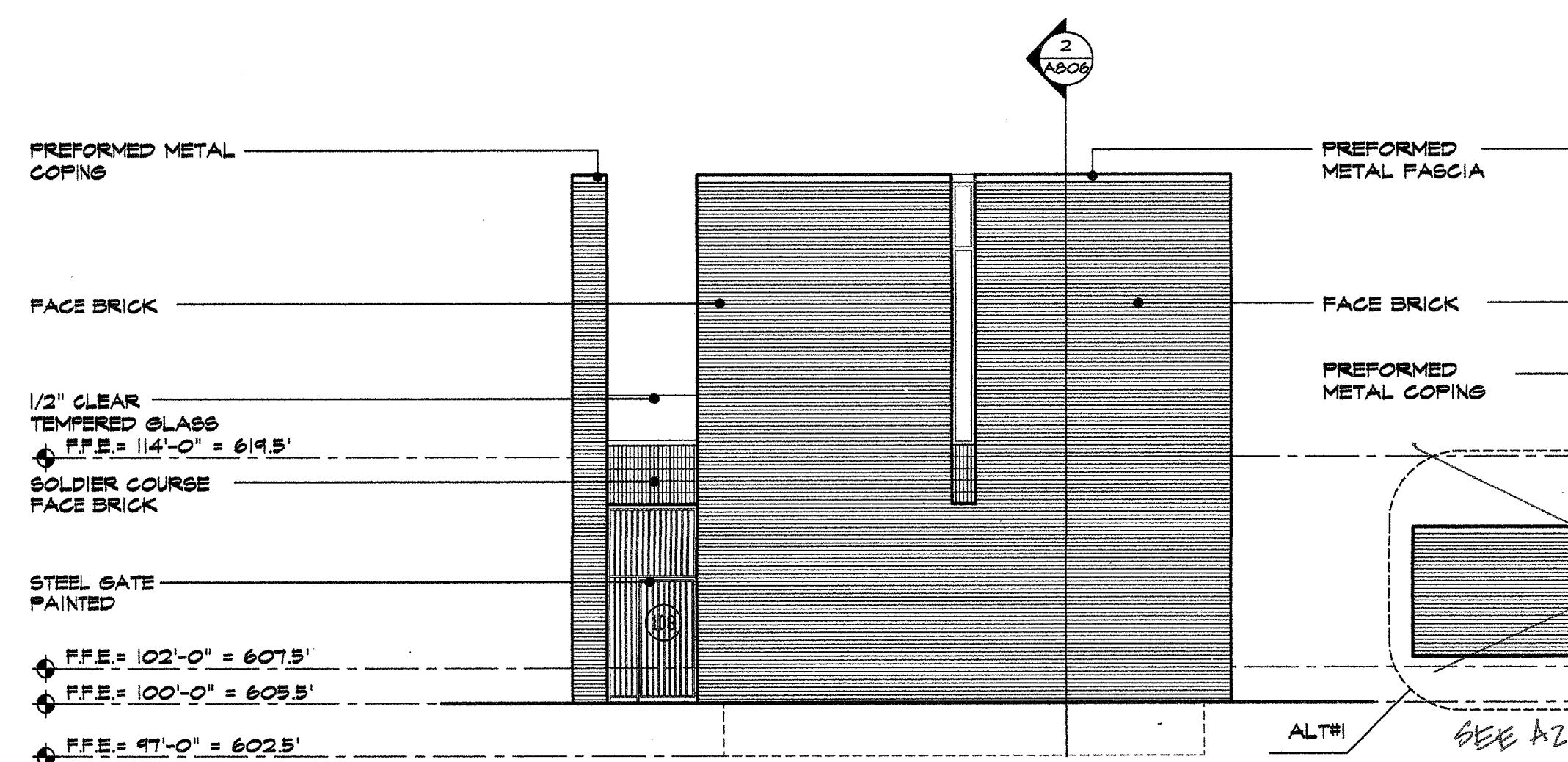
6 partial elevation  
1/8"=1'-0"



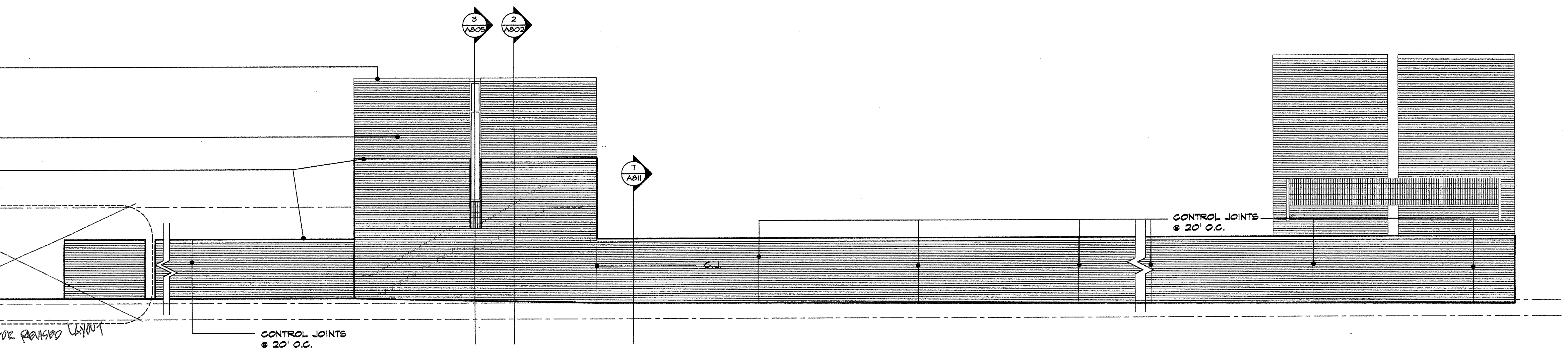
7 partial elevation  
1/8"=1'-0"



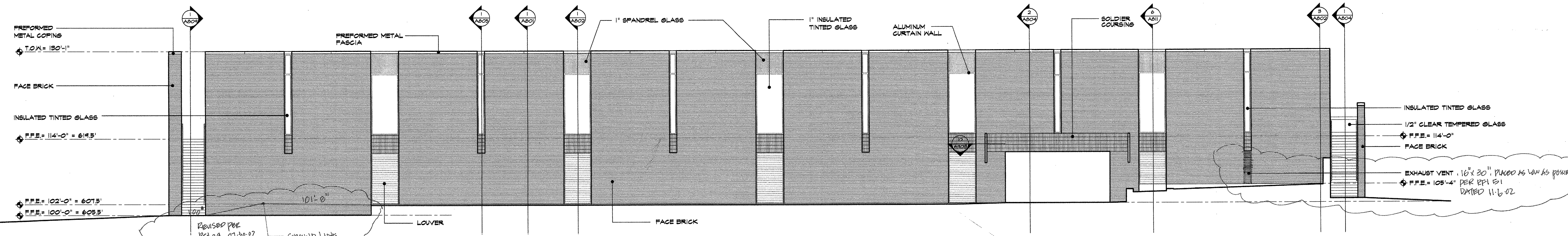
8 partial elevation  
1/8"=1'-0"



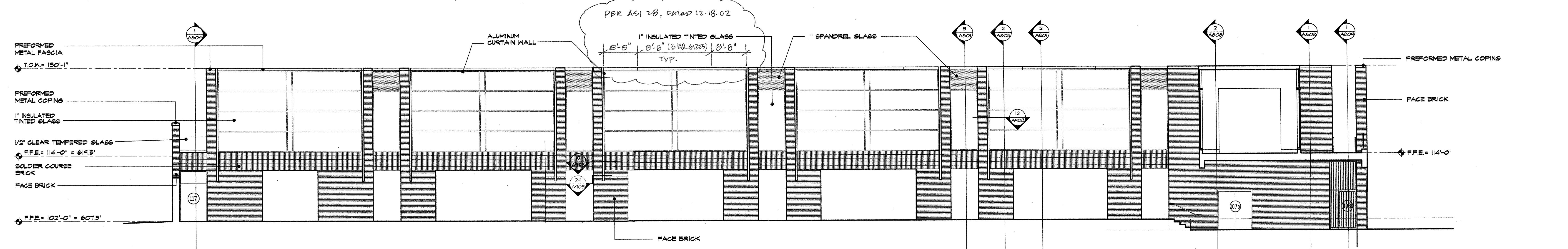
3 west elevation  
1/8"=1'-0"



4 east elevation  
1/8"=1'-0"



2 south elevation  
1/8"=1'-0"



1 north elevation  
1/8"=1'-0"