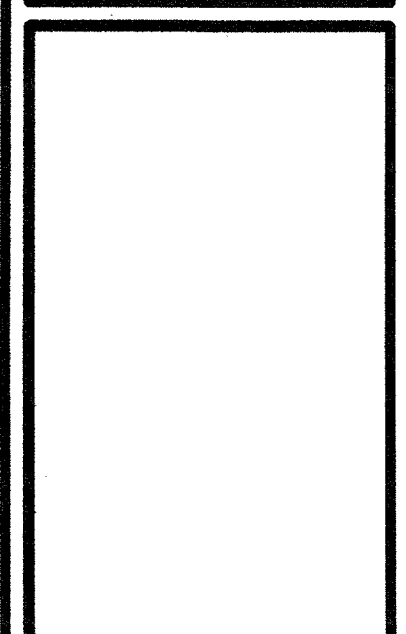


ISSUE DATE	FEB. 20, 2002
REVISIONS	

ADDISON ATHLETIC CLUB EXPANSION
AND
LEISURE POOL
ADDISON, TEXAS

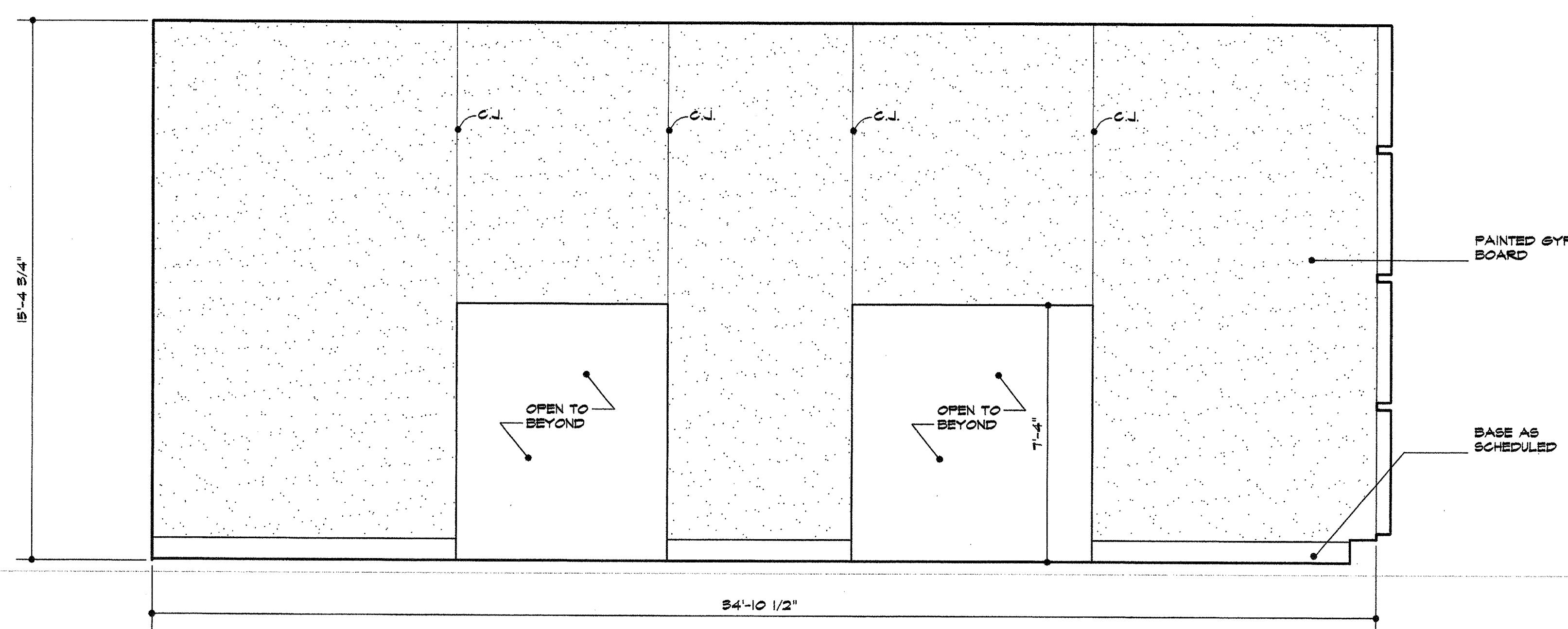
RON HOBBS ARCHITECTS
614 W. MAIN ST. SUITE 400 CARLAND, TEXAS 75040
(972) 994-0174



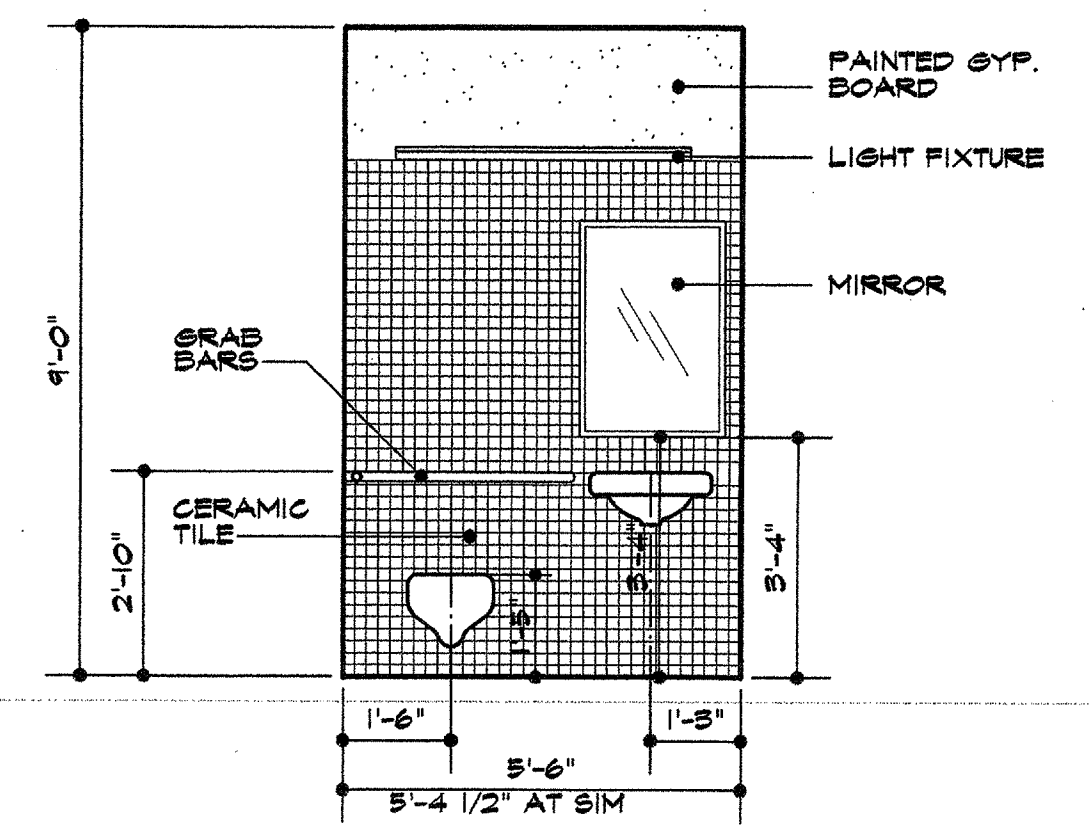
JOB NUMBER

0012

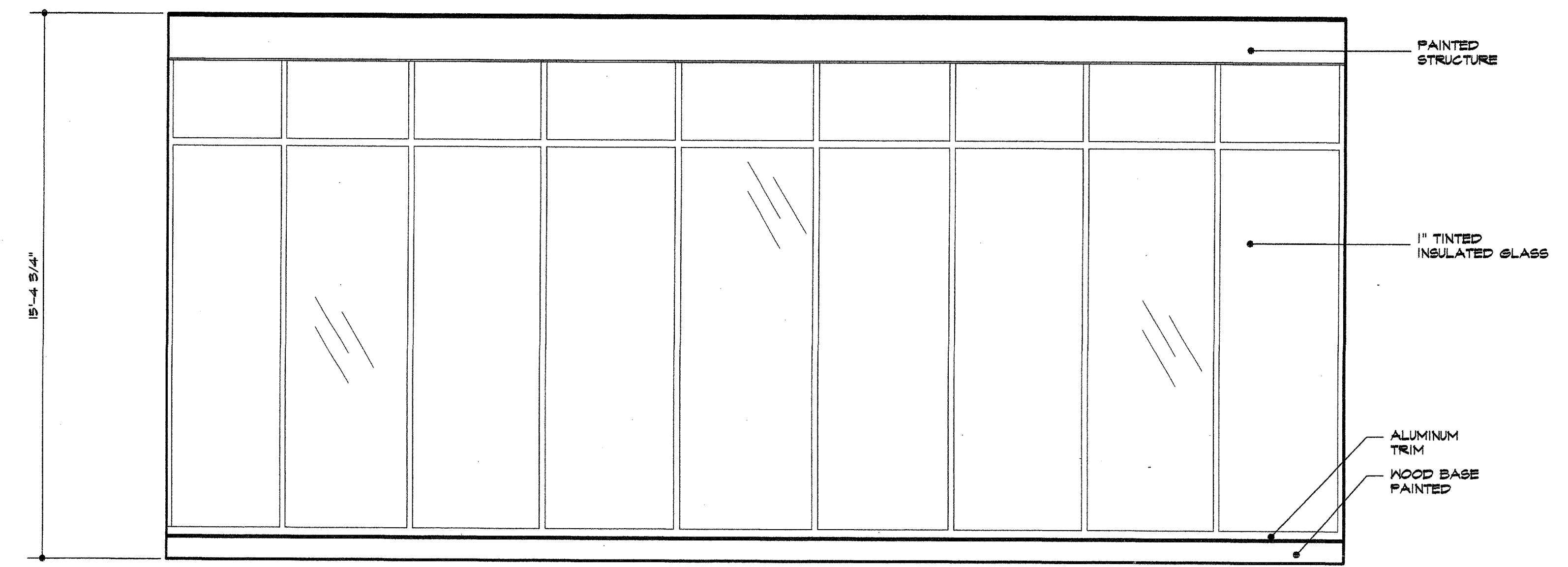
SHEET NAME
INTERIOR ELEVATIONS
SHEET NUMBER
A501



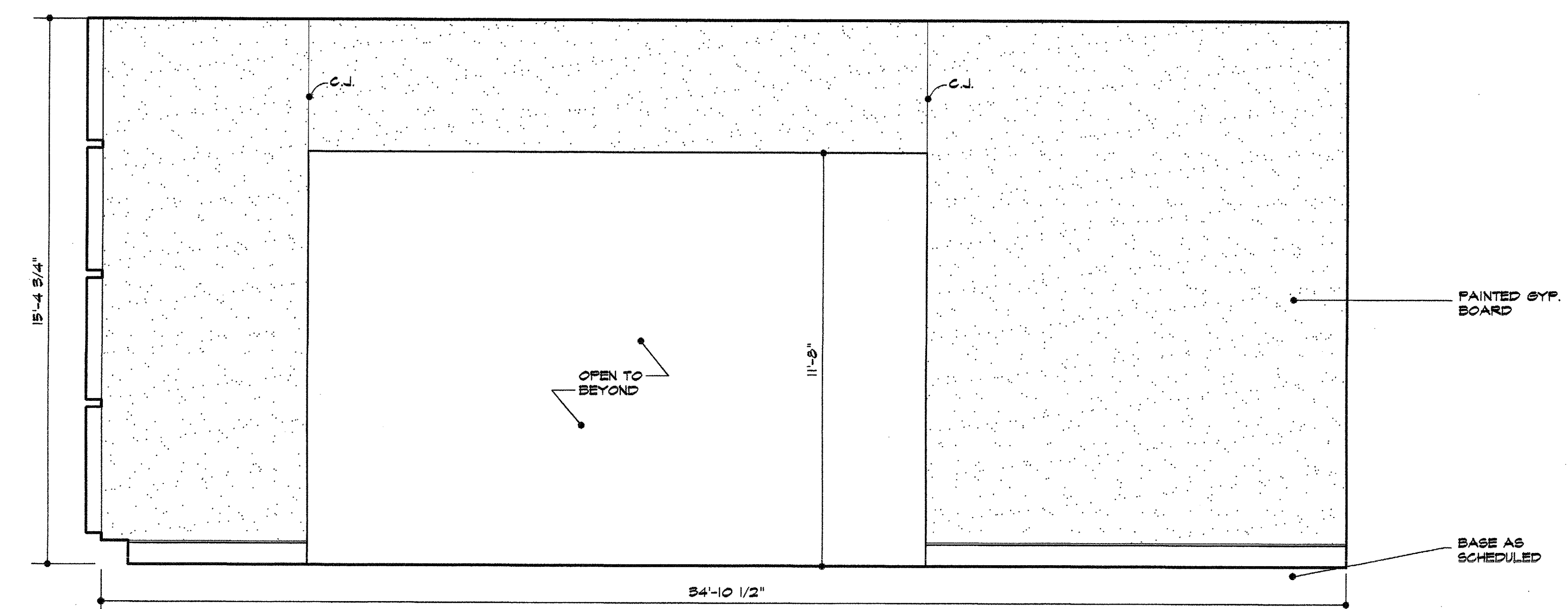
8 interior elevation - rm. #213
3/8"=1'-0"



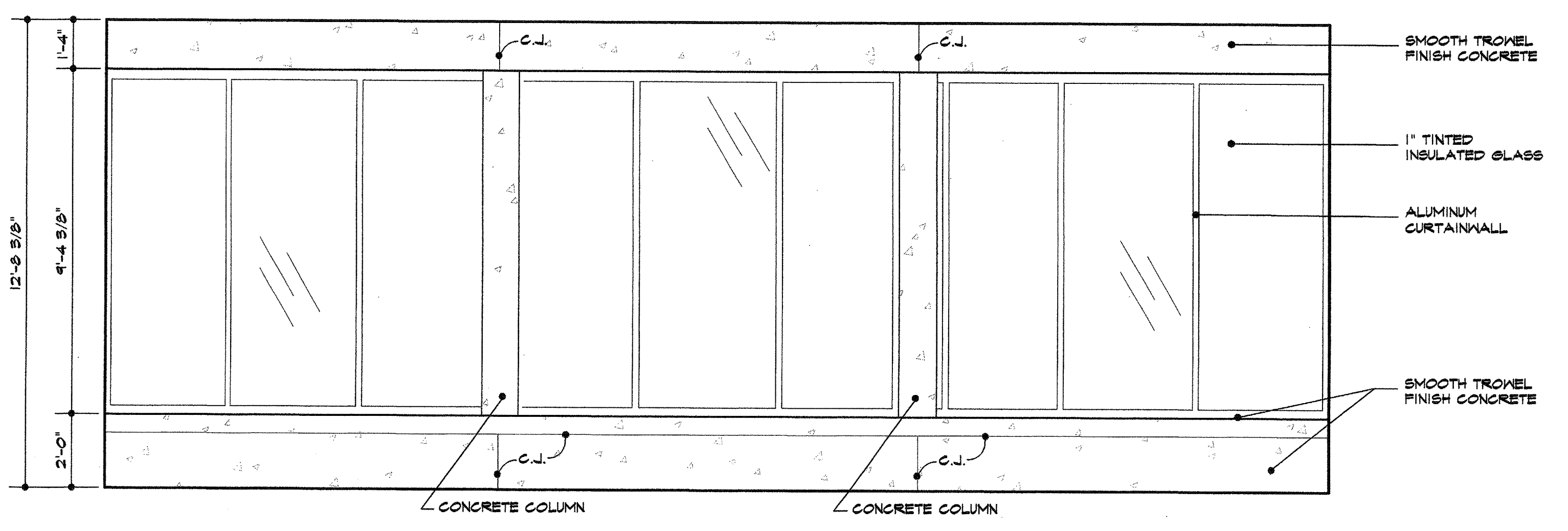
9 interior elev - rm. #215 & 216
3/8"=1'-0"



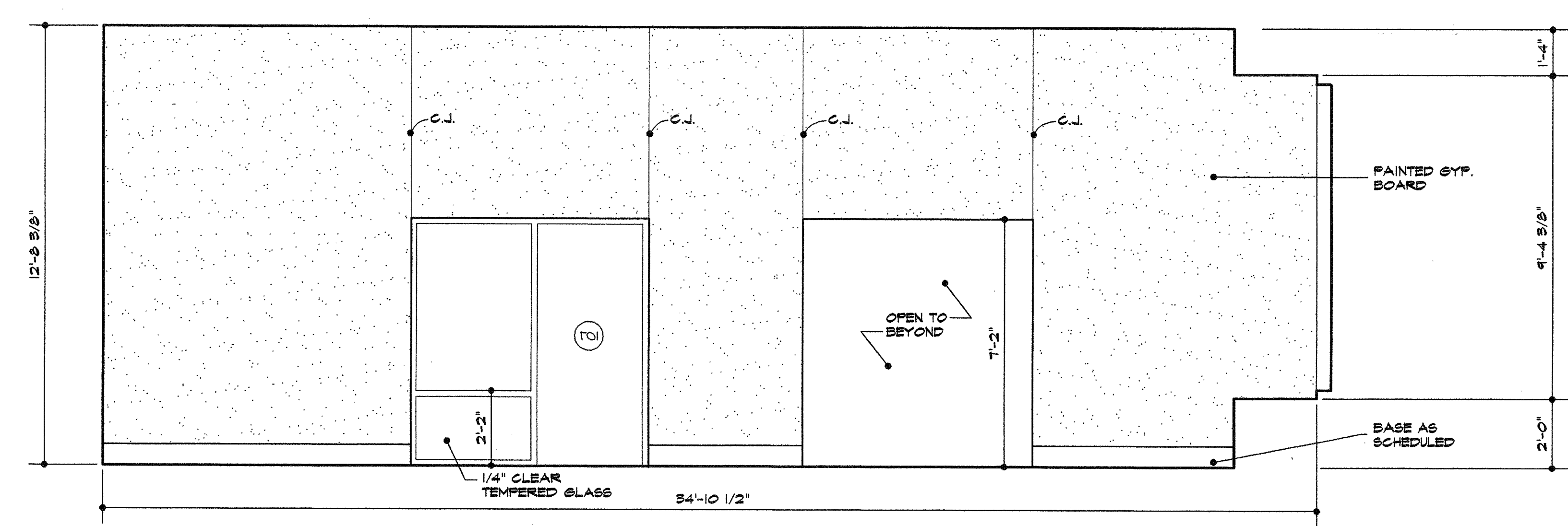
6 interior elevation - rm. #213
3/8"=1'-0"



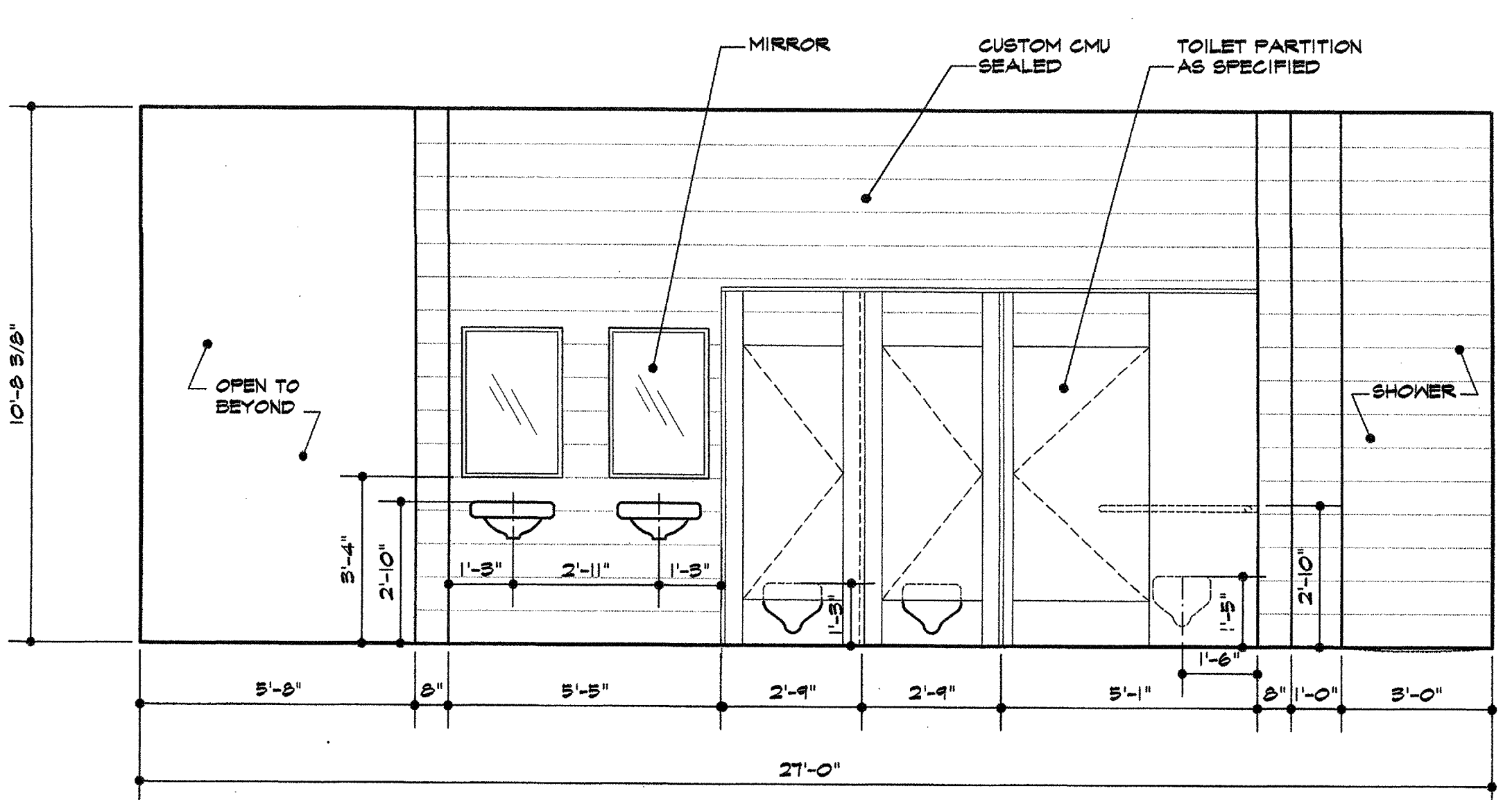
7 interior elevation - rm. #213
3/8"=1'-0"



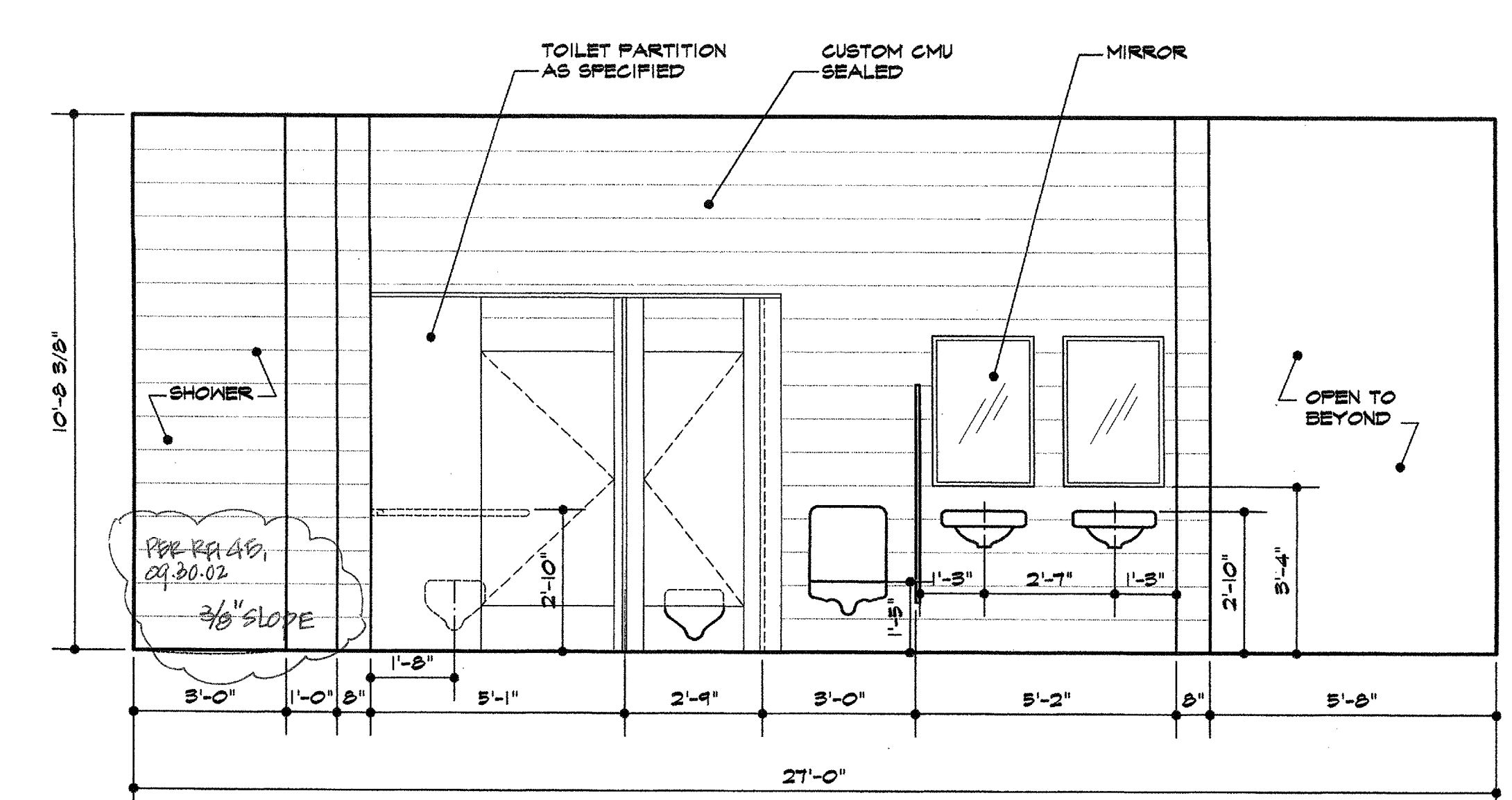
4 interior elevation - rm. #116
3/8"=1'-0"



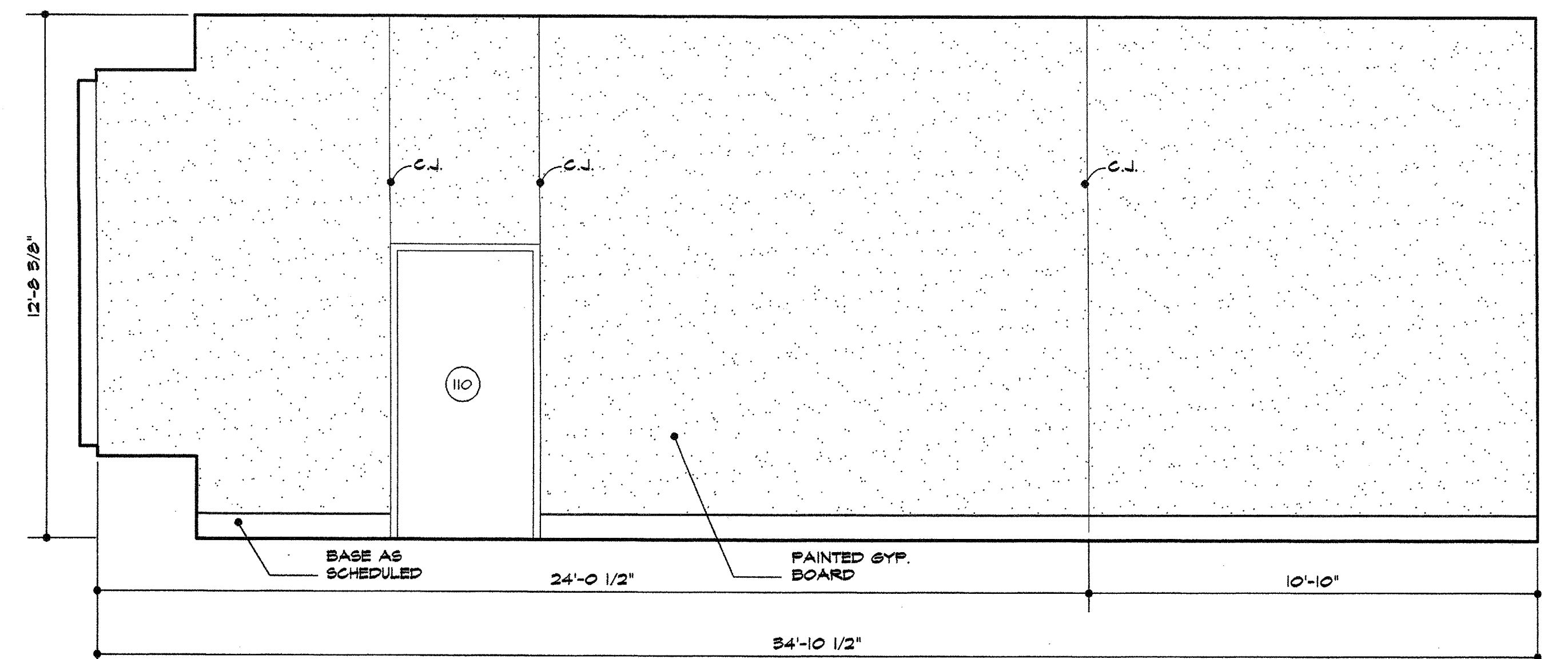
5 interior elevation - rm. #116
3/8"=1'-0"



1 interior elevation - rm. #102
3/8"=1'-0"



2 interior elevation - rm. #101
3/8"=1'-0"



3 interior elevation - rm. #116
3/8"=1'-0"