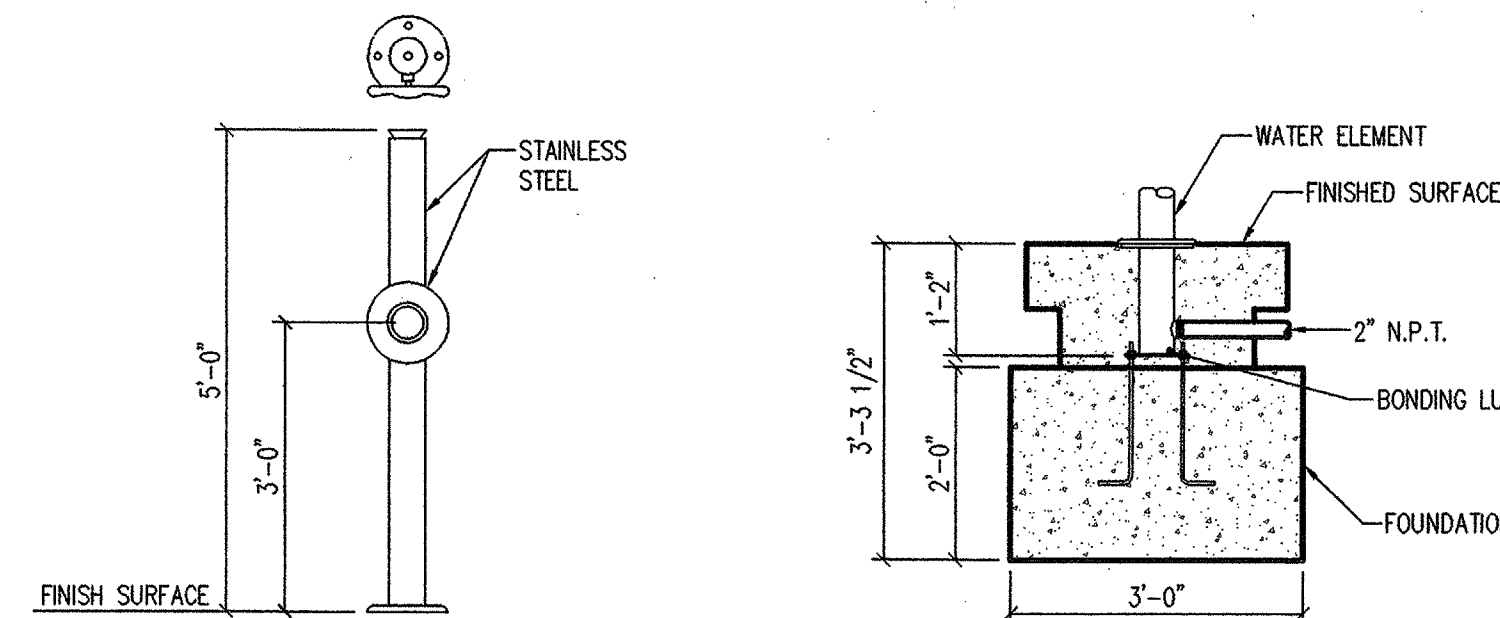
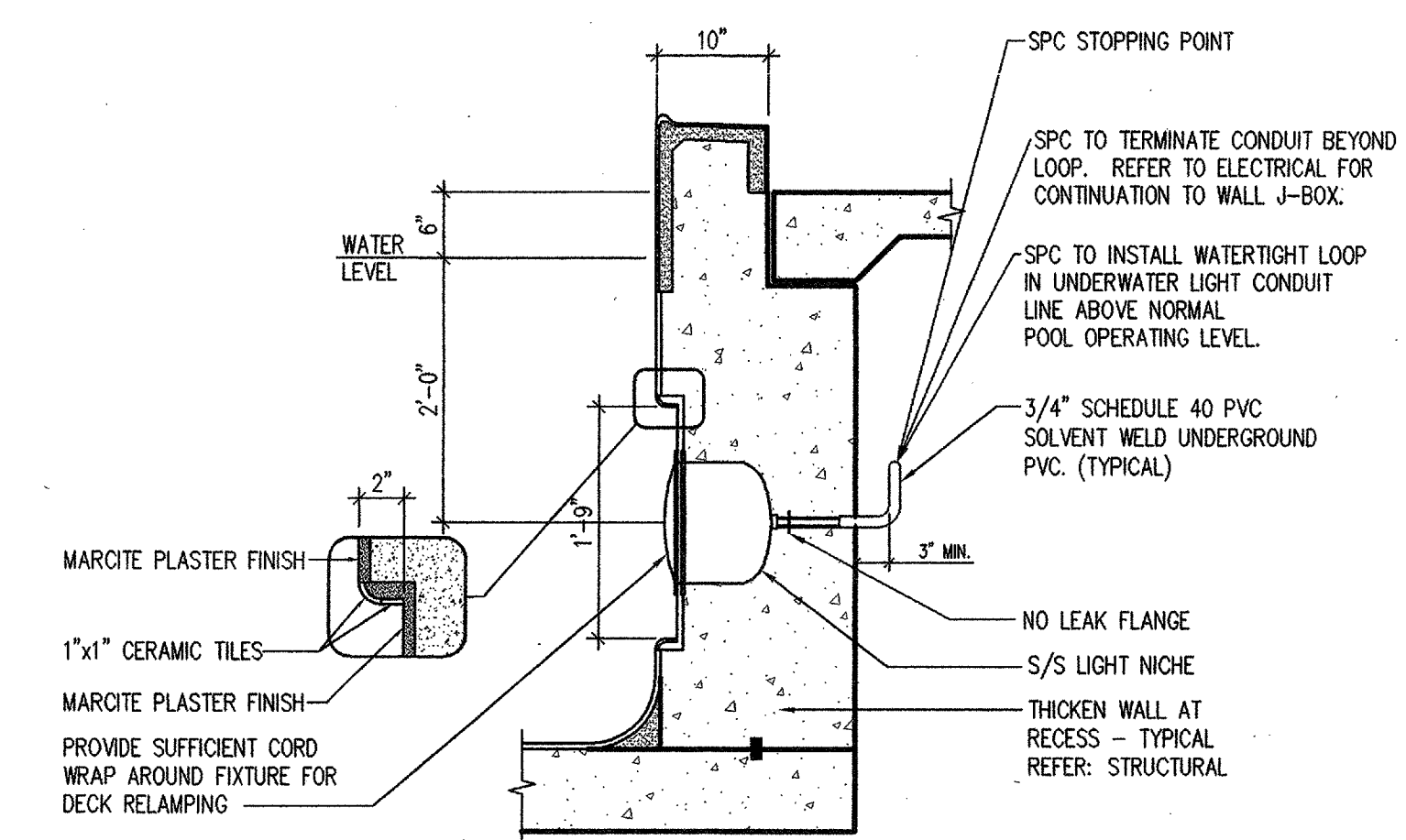


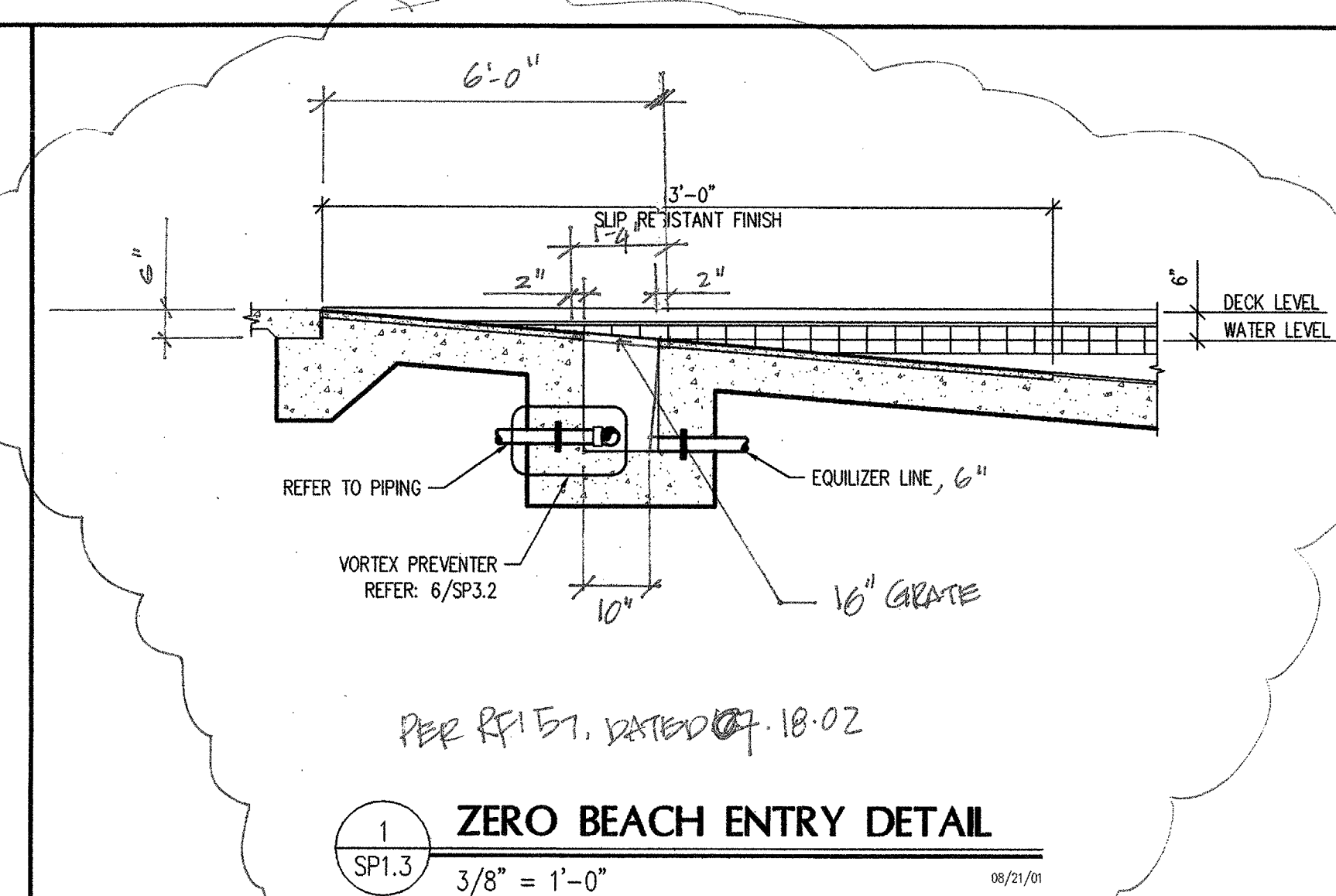
12 CONTRASTING NOSING TILE
SP1.3 6" = 1'-0"



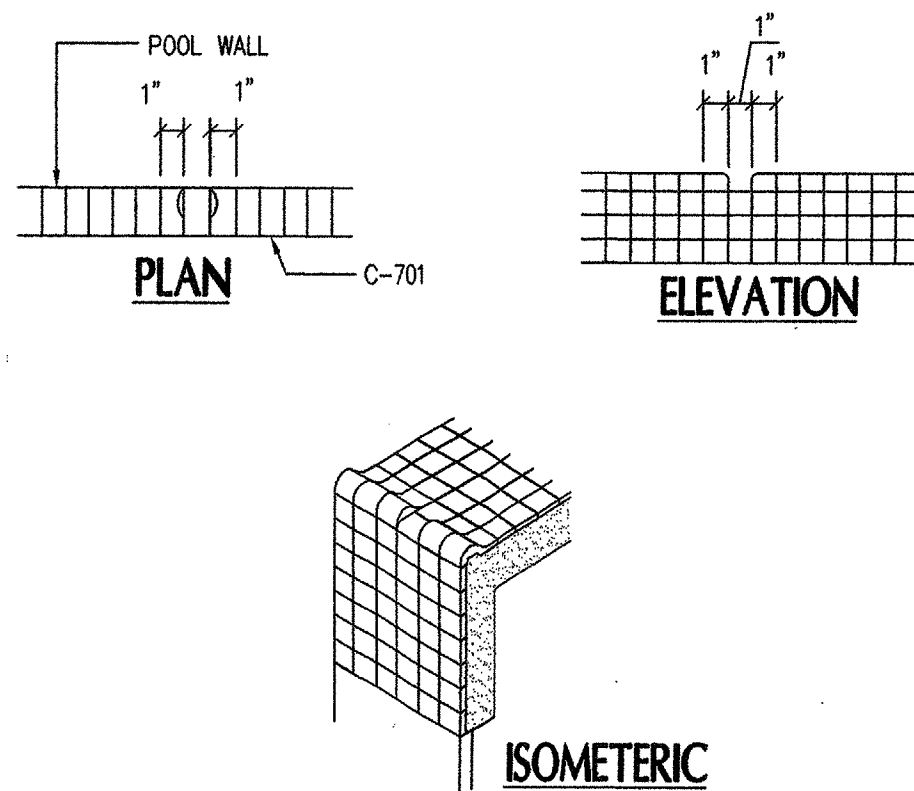
8 WATER WOOPEE -C WITH HAND WHEEL (SPECIAL)
SP1.3 1/2" = 1'-0"



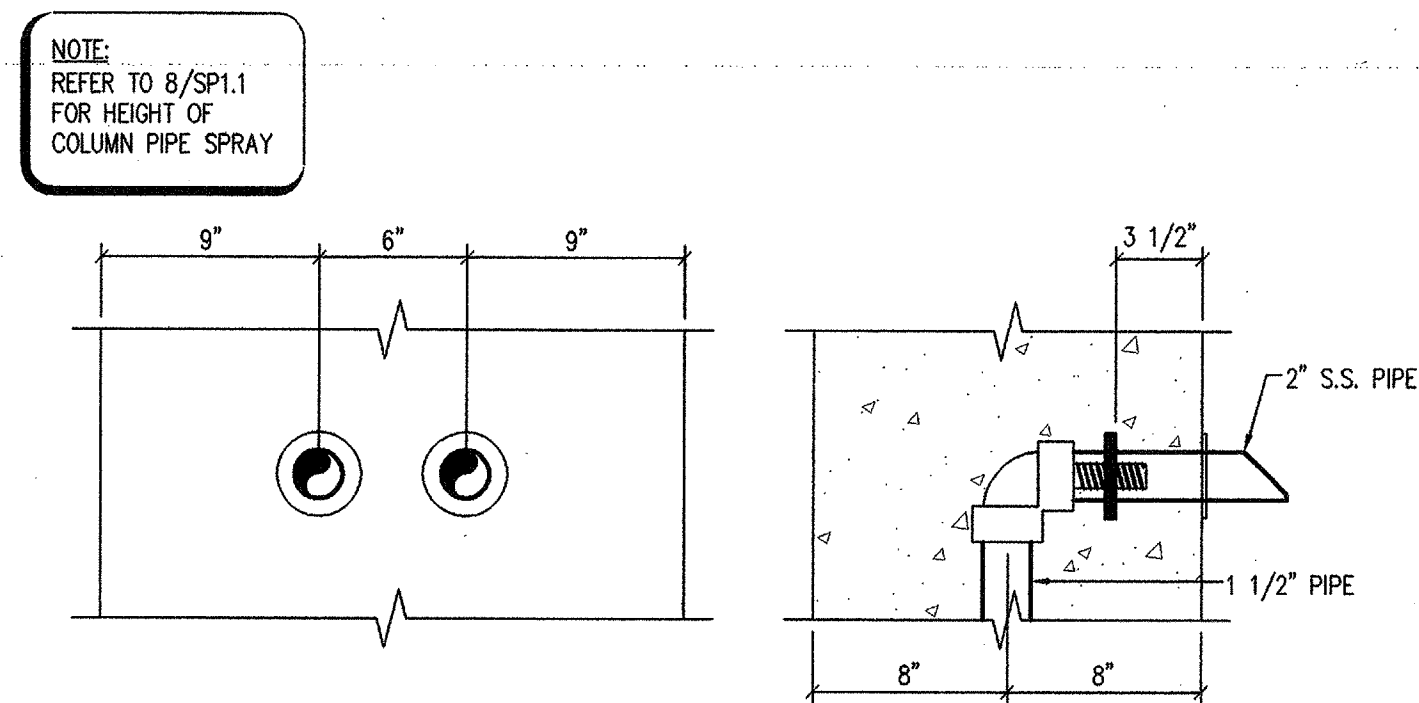
4 VORTEX UNDERWATER LIGHT
SP1.3 3/4" = 1'-0"



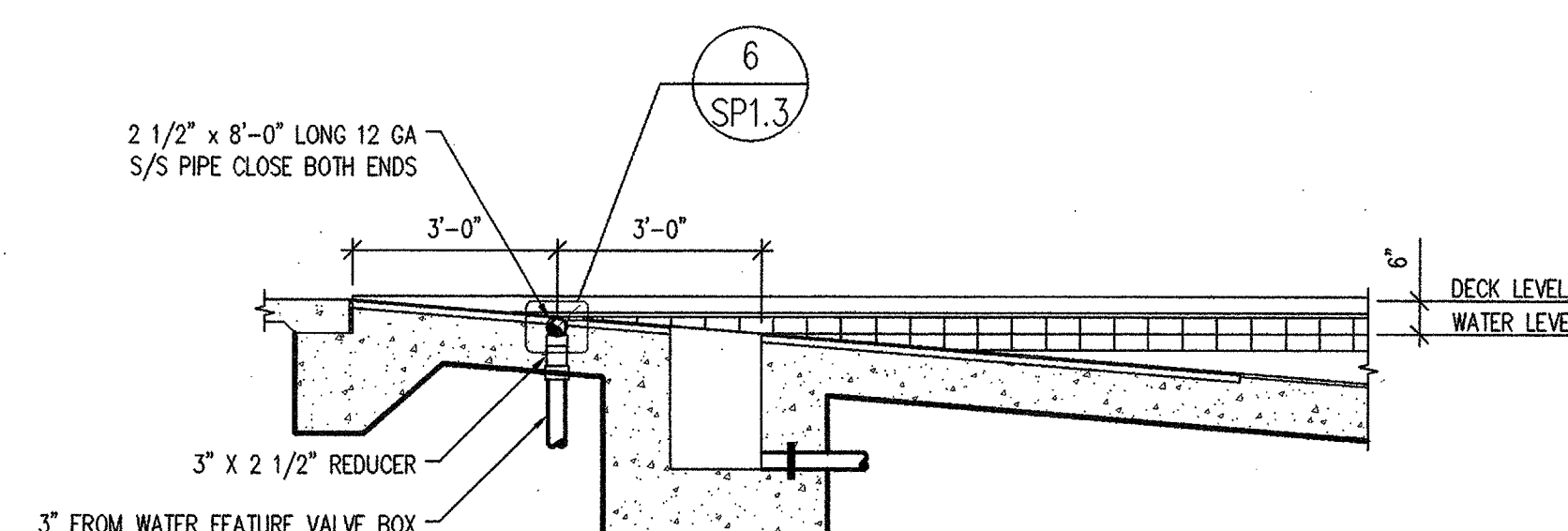
1 ZERO BEACH ENTRY DETAIL
SP1.3 3/8" = 1'-0"



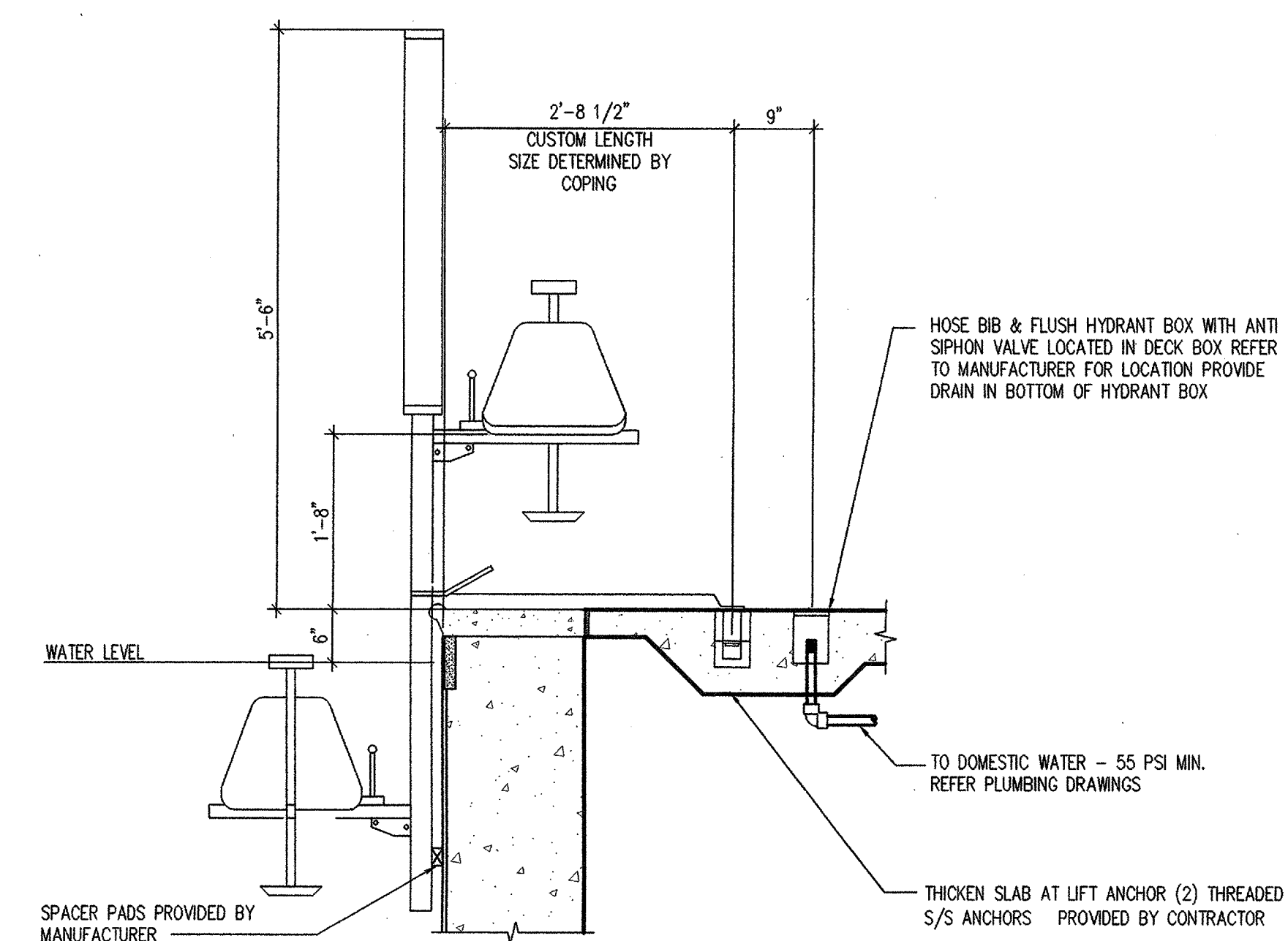
13 NOSING TILE DETAIL
SP1.3 1 1/2" = 1'-0"



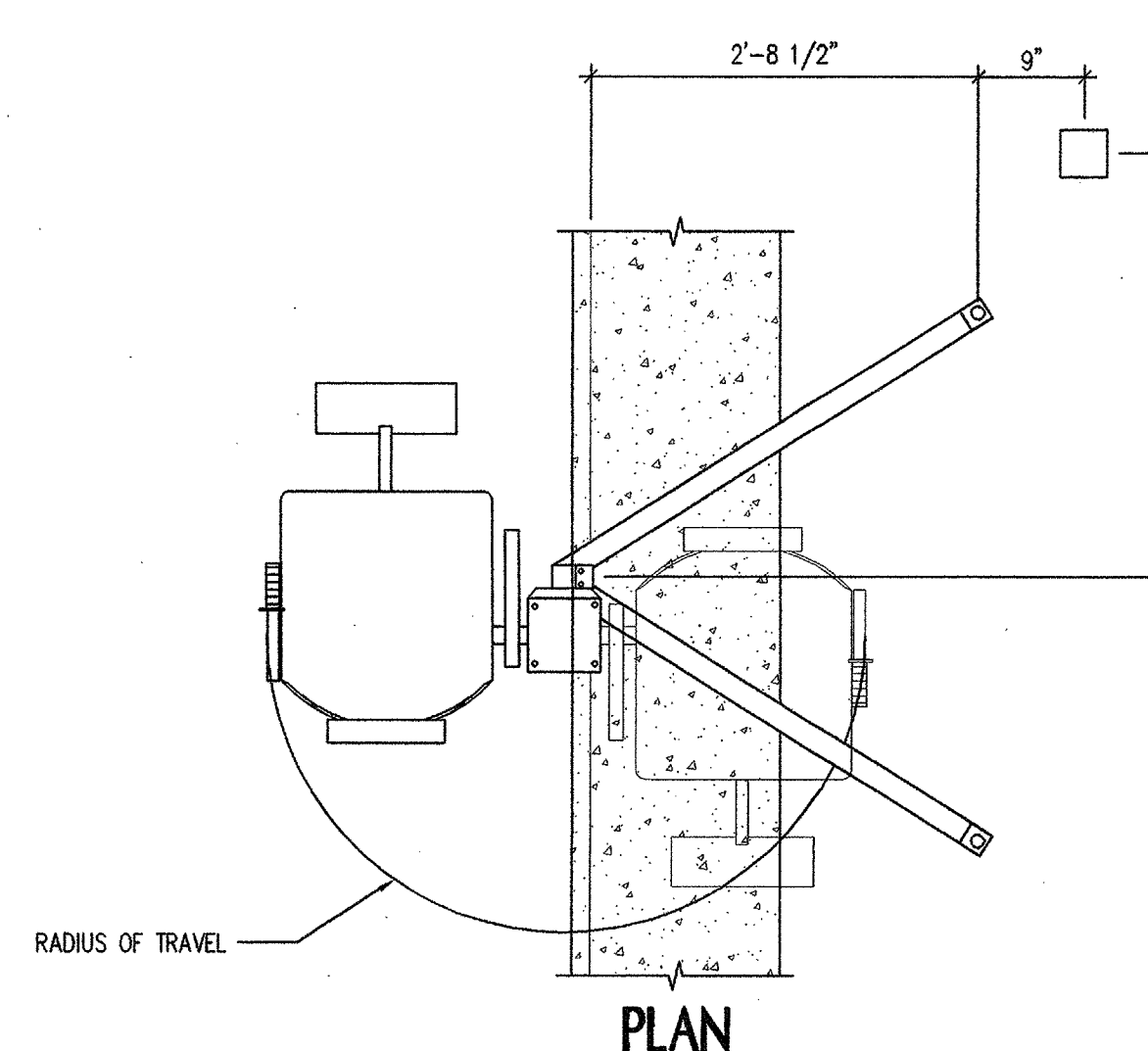
9 COLUMN PIPE SPRAY DETAIL
SP1.3 1 1/2" = 1'-0"



5 SPRAYBAR DETAIL
SP1.3 3/8" = 1'-0"

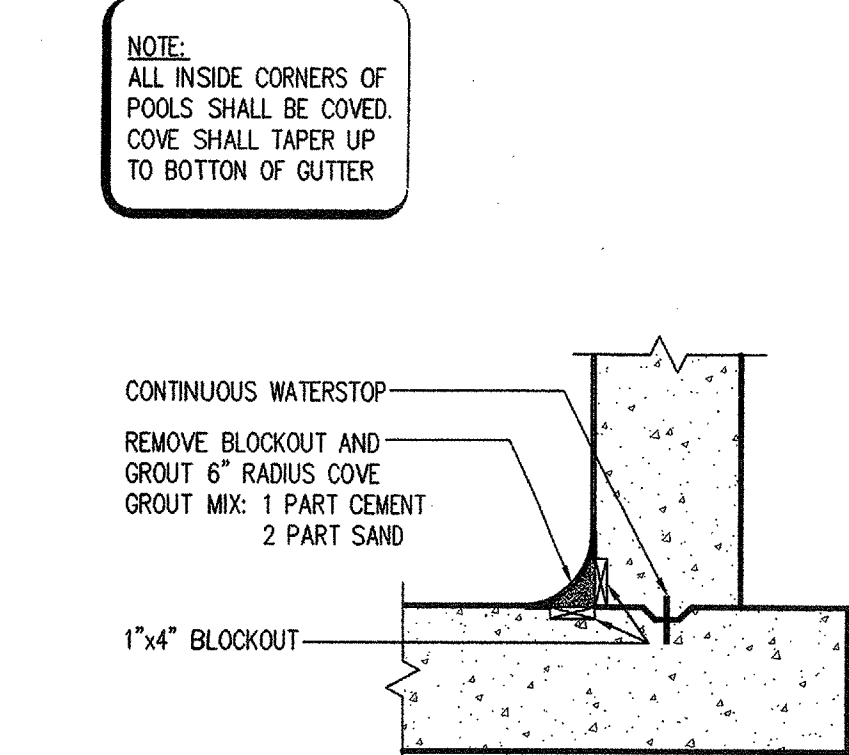


ELEVATION

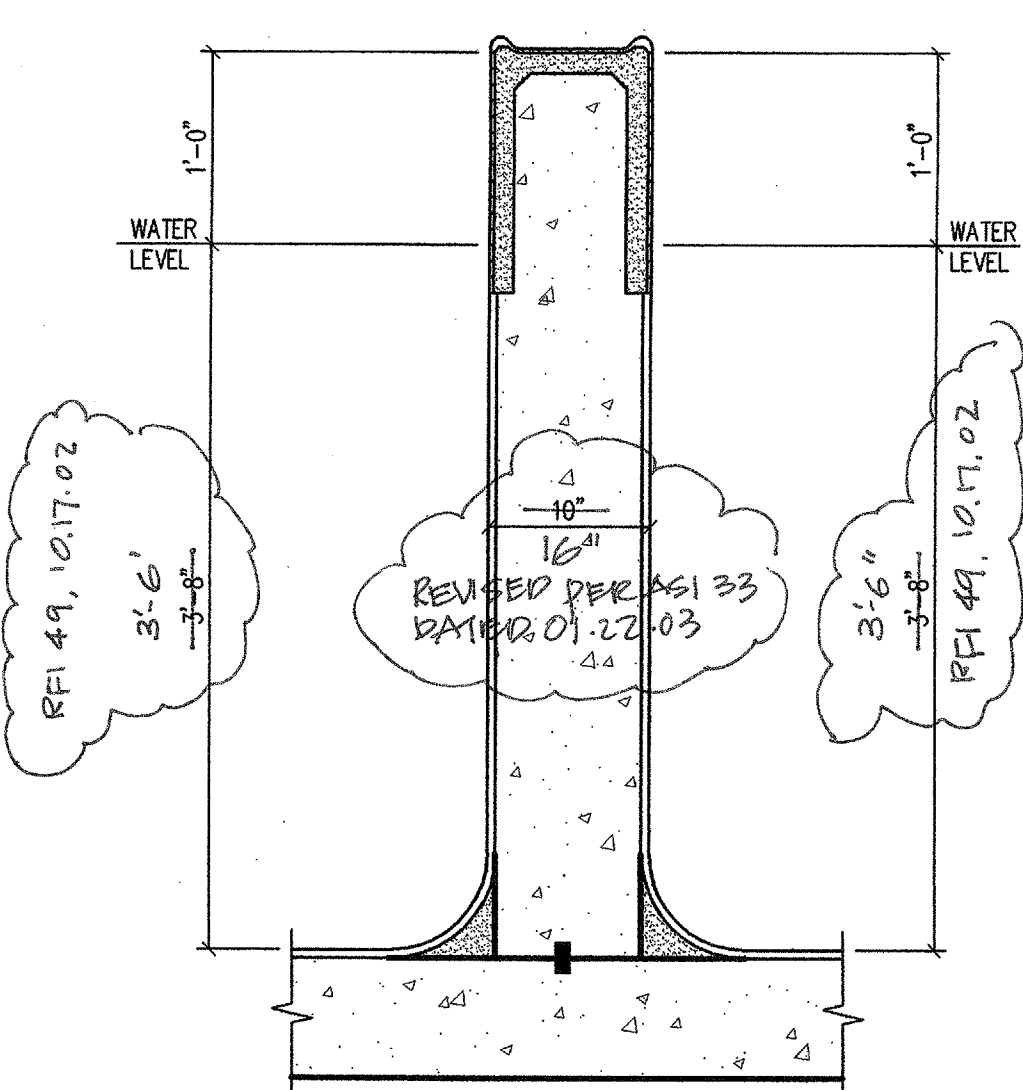


PLAN

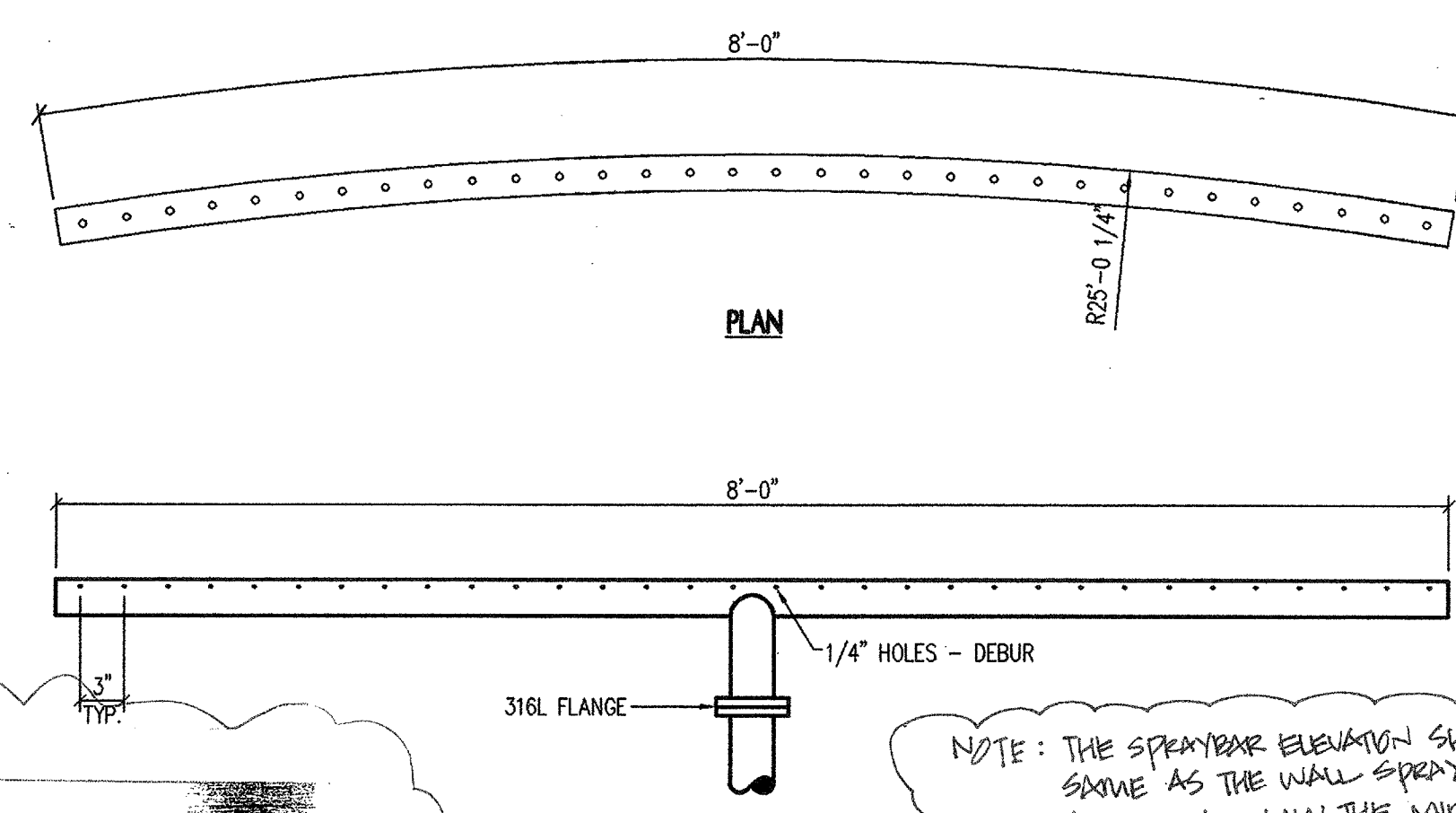
2 HANDICAP LIFT
SP1.3 3/4" = 1'-0"



14 COVE DETAIL
SP1.3 3/4" = 1'-0"



10 VORTEX WALL DETAIL
SP1.3 1" = 1'-0"

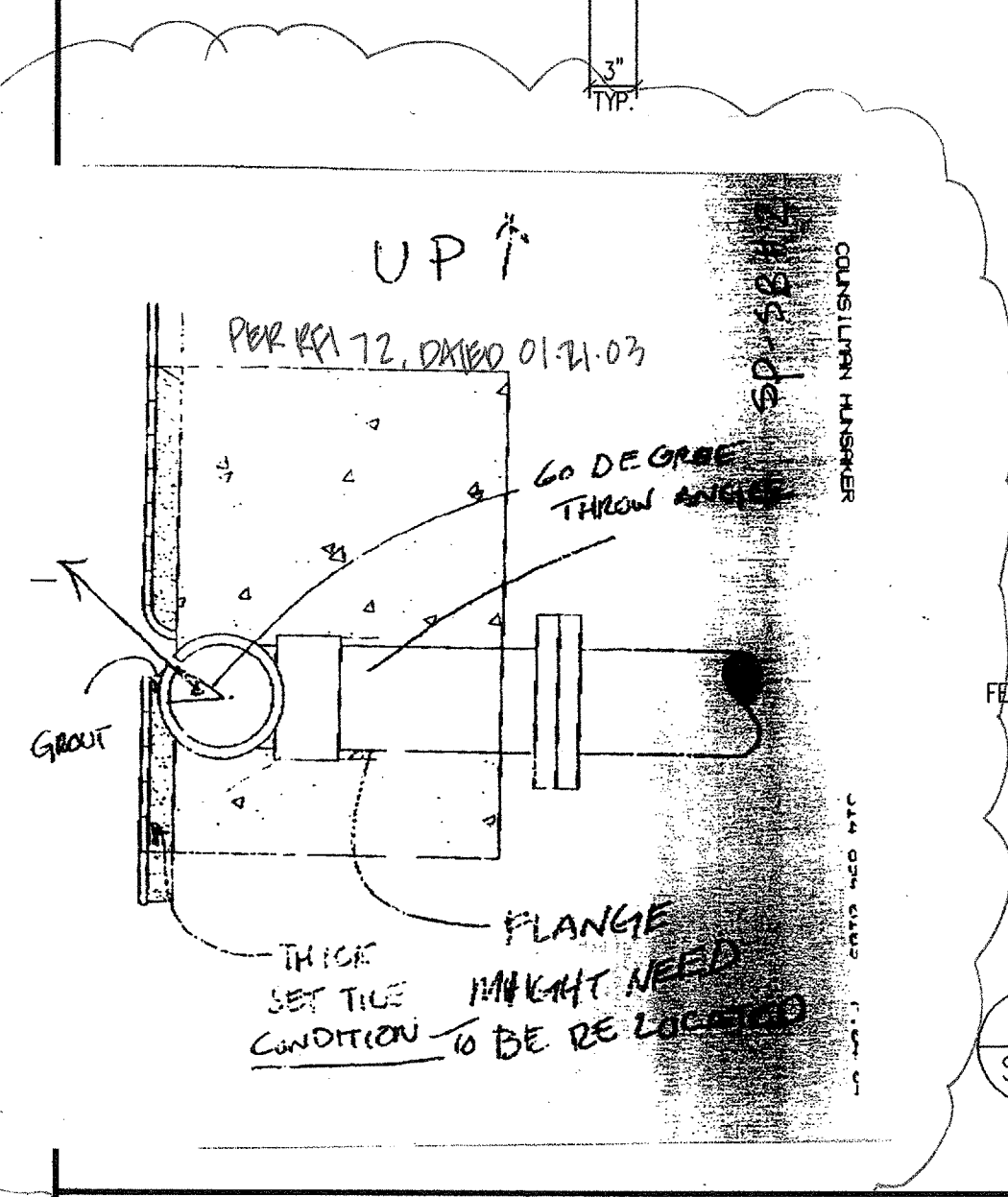


PLAN

ELEVATION

SECTION

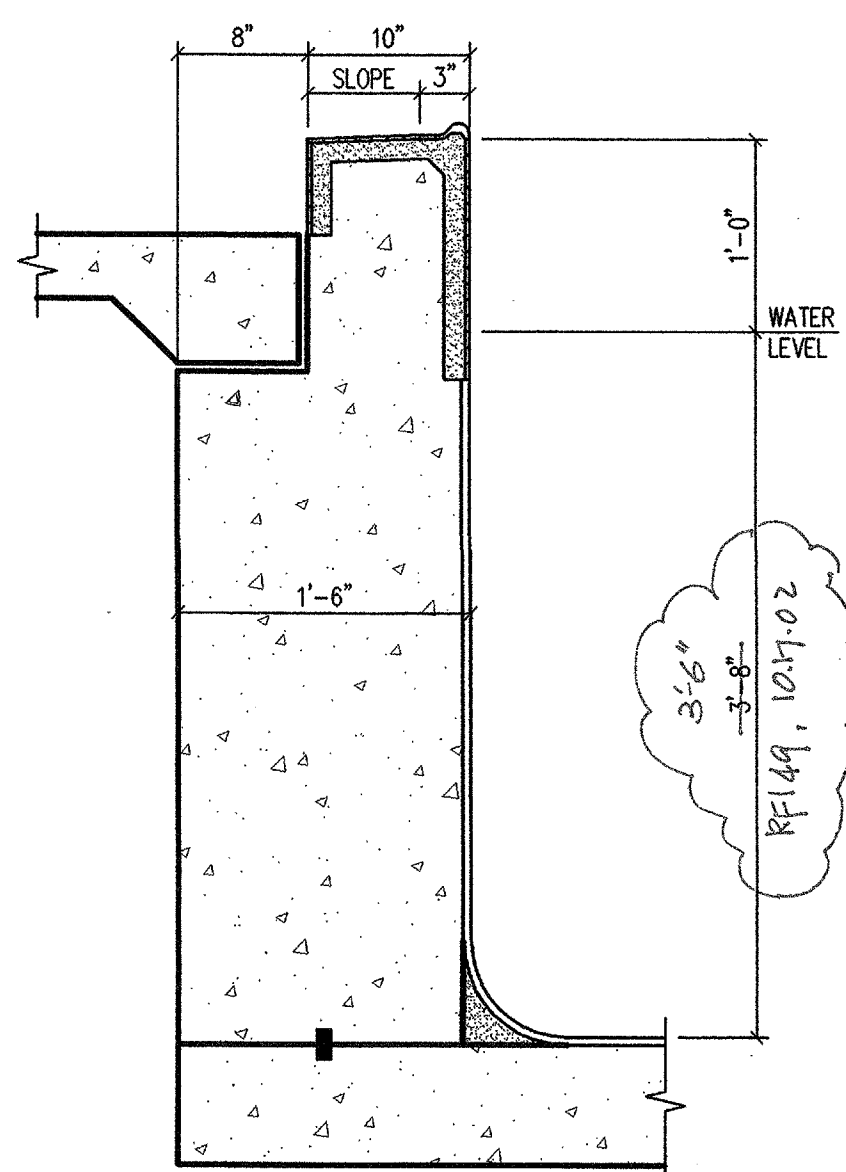
6 SPRAYBAR SECTION
SP1.3 1" = 1'-0"



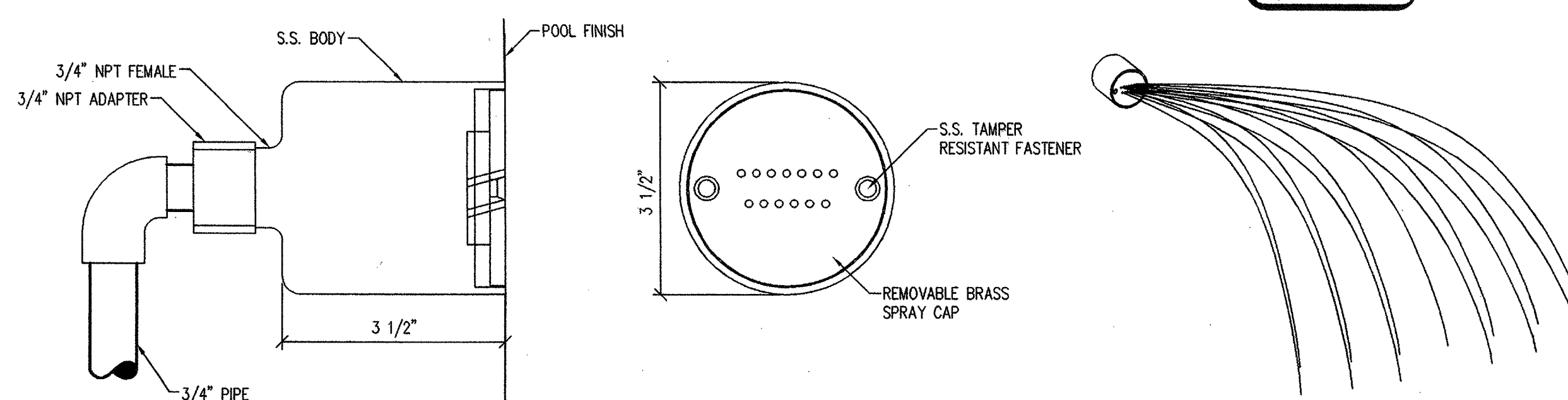
NOTE: ALL 316L STEEL WELD WITH LOW CARBON ROD.

NOTE: PROVIDE BONDING LUG PER NEC 680

NOTE: THE SPRAYBAR ELEVATION SHOULD BE AT THE SAME AS THE WALL SPRAY CENTERED AT 1 FT. 2 IN. BELOW THE MIDDLE POOL DECK REFER TO 10-SPI-2 PER RFI 57, DATED 01-10-02

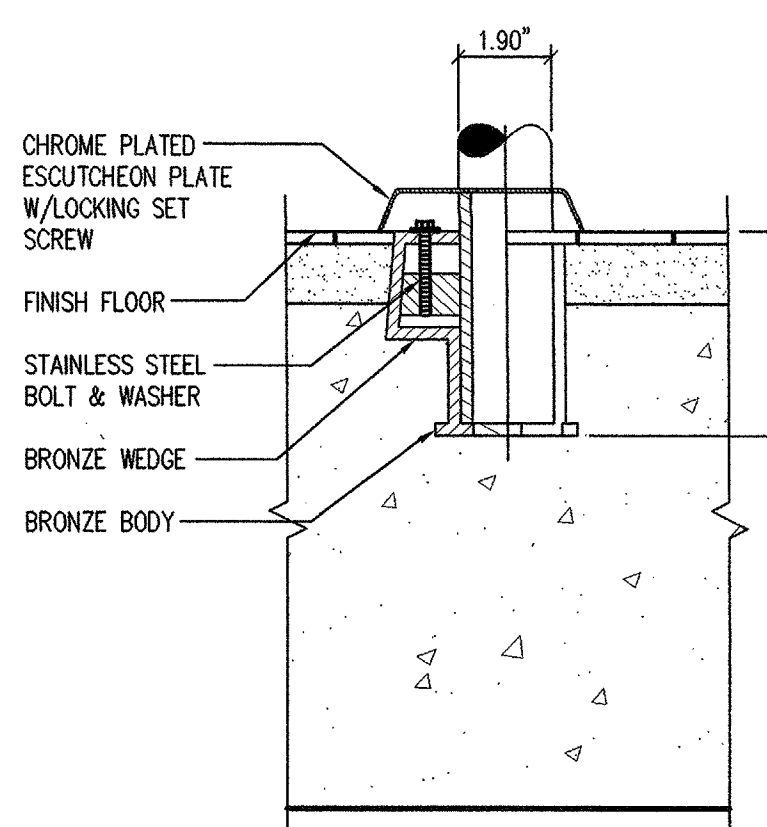


11 VORTEX/DECK CONFIGURATION
SP1.3 1" = 1'-0"



7 WALL SPRAY
SP1.3 6" = 1'-0"

NOTE: REFER TO 10-SPI-2 FOR LOCATION



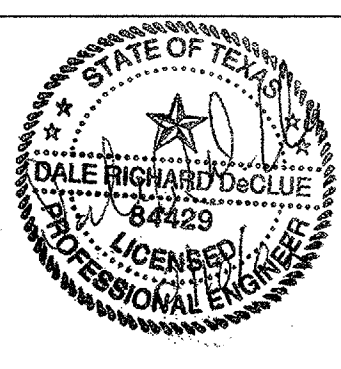
3 WEDGE ANCHOR & ESCUTCHEON PLATE
SP1.3 3" = 1'-0"

ISSUE DATE
FEB. 20, 2002

REVISIONS

ADDISON ATHLETIC CLUB EXPANSION
AND
LEISURE POOL
ADDISON, TEXAS

RON HOBBS ARCHITECTS
614 W. MAIN ST. SUITE #100 GARLAND, TEXAS 75040
(972) 494-0722
FAX (972) 494-0722



JOB NUMBER

0012

SHEET NUMBER

SP1.3

100% CD