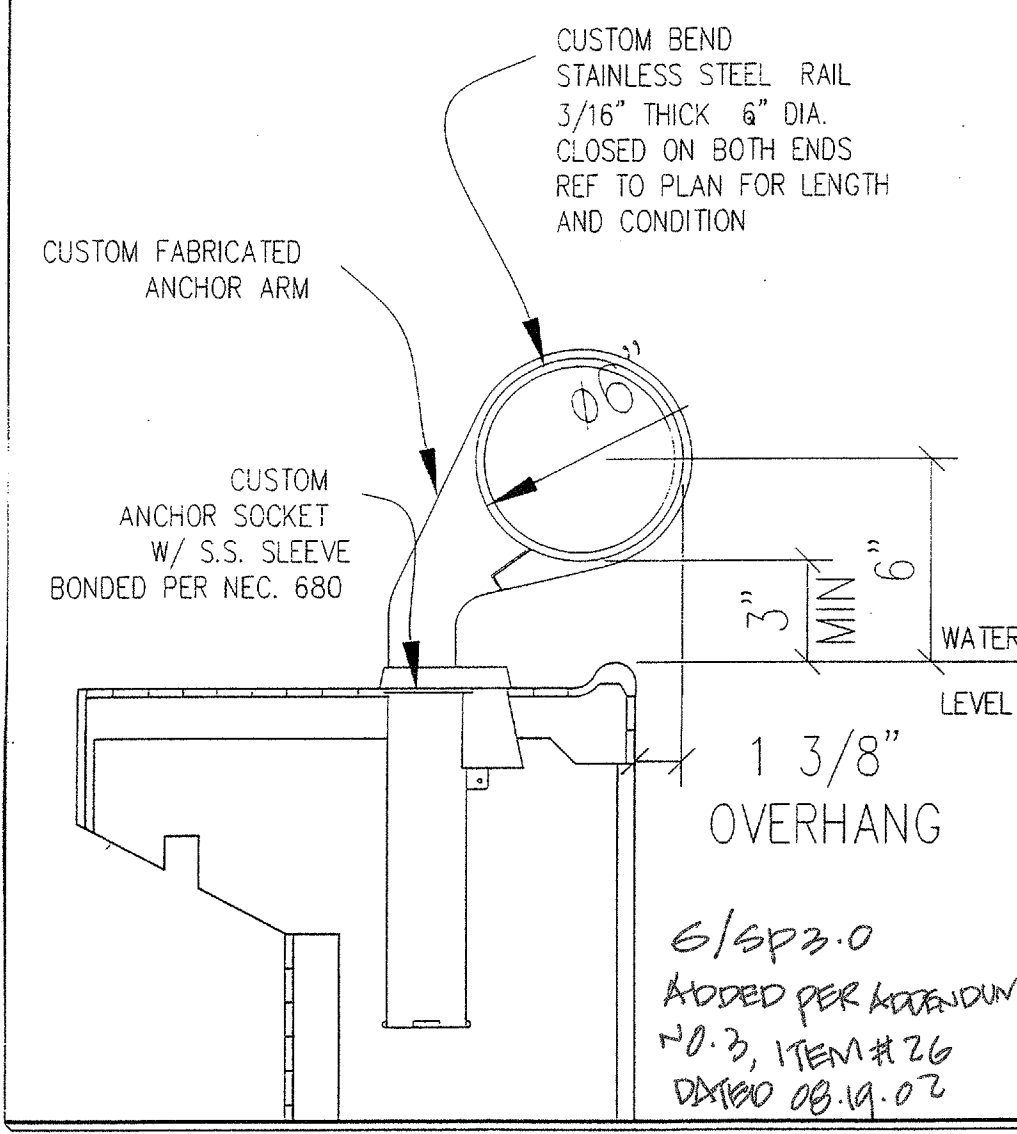
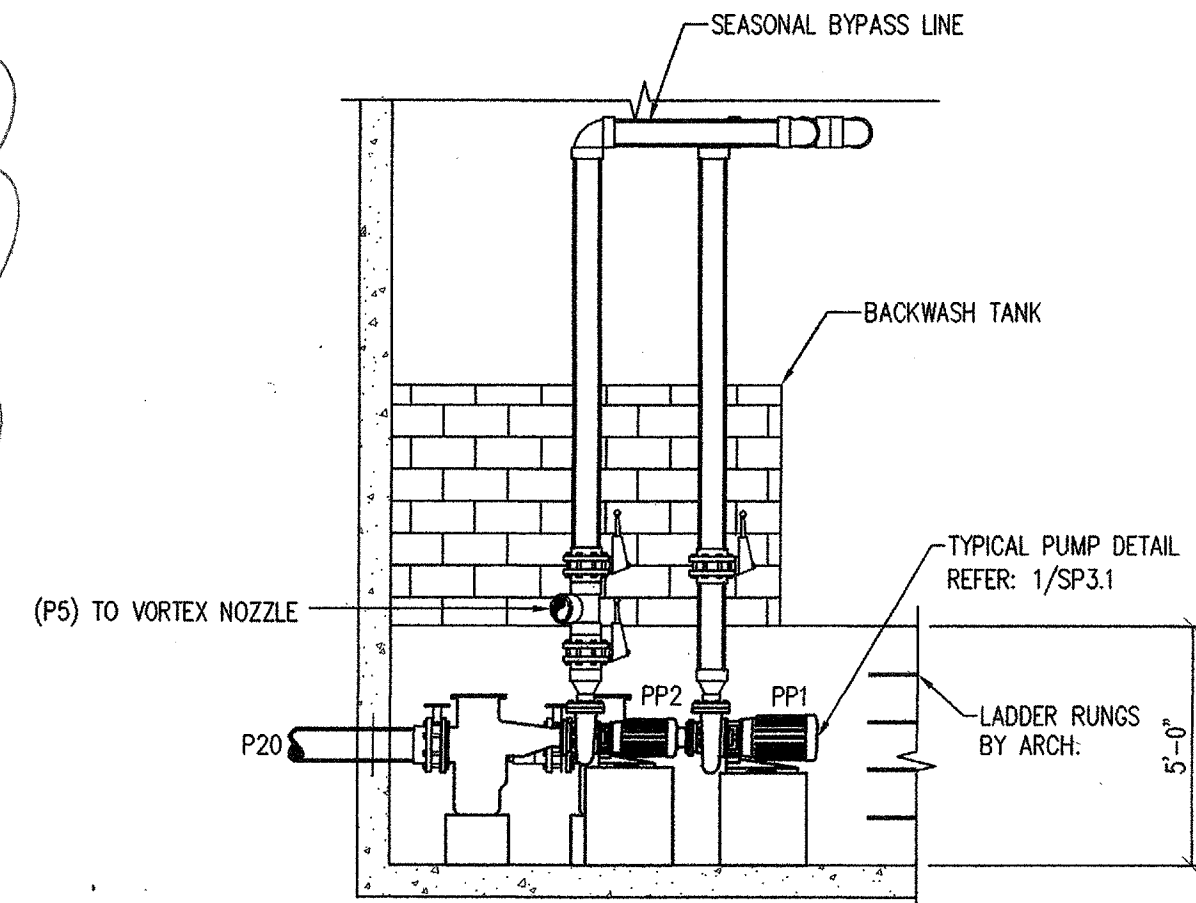


4 PUMP PIT SECTION
 1/4" = 1'-0"
 12/11/01

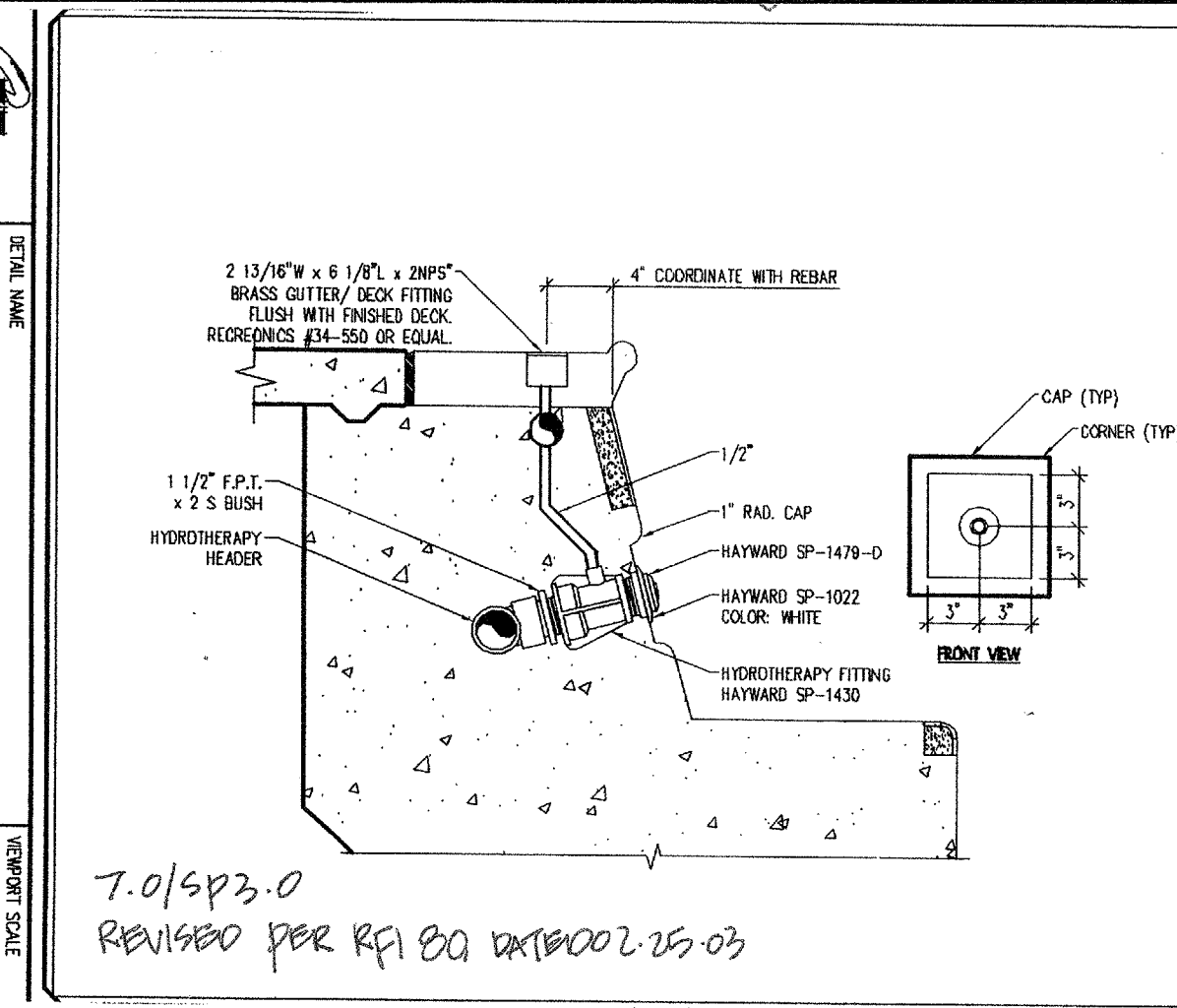


6/15/03.0
 ADDED PER ADDENDUM
 11-2, 11-26
 DATED 08.19.02

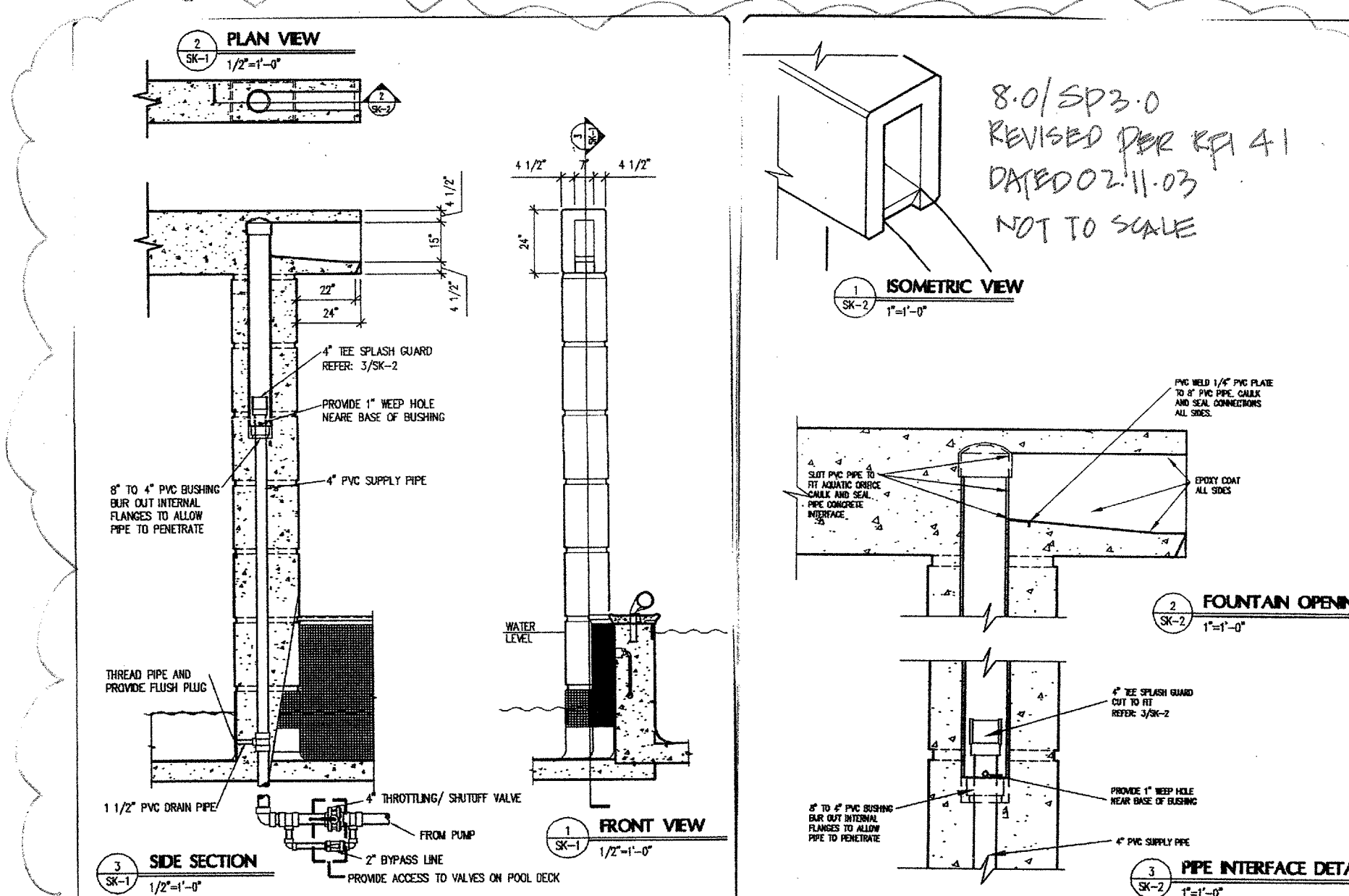
ADDISON ATHLETIC CLUB EXPANSION
 ADDENDUM # 3
 WALK & CHILDREN'S POOL WALL RAILING DETAIL
 REF: SP1.2 11/01/11



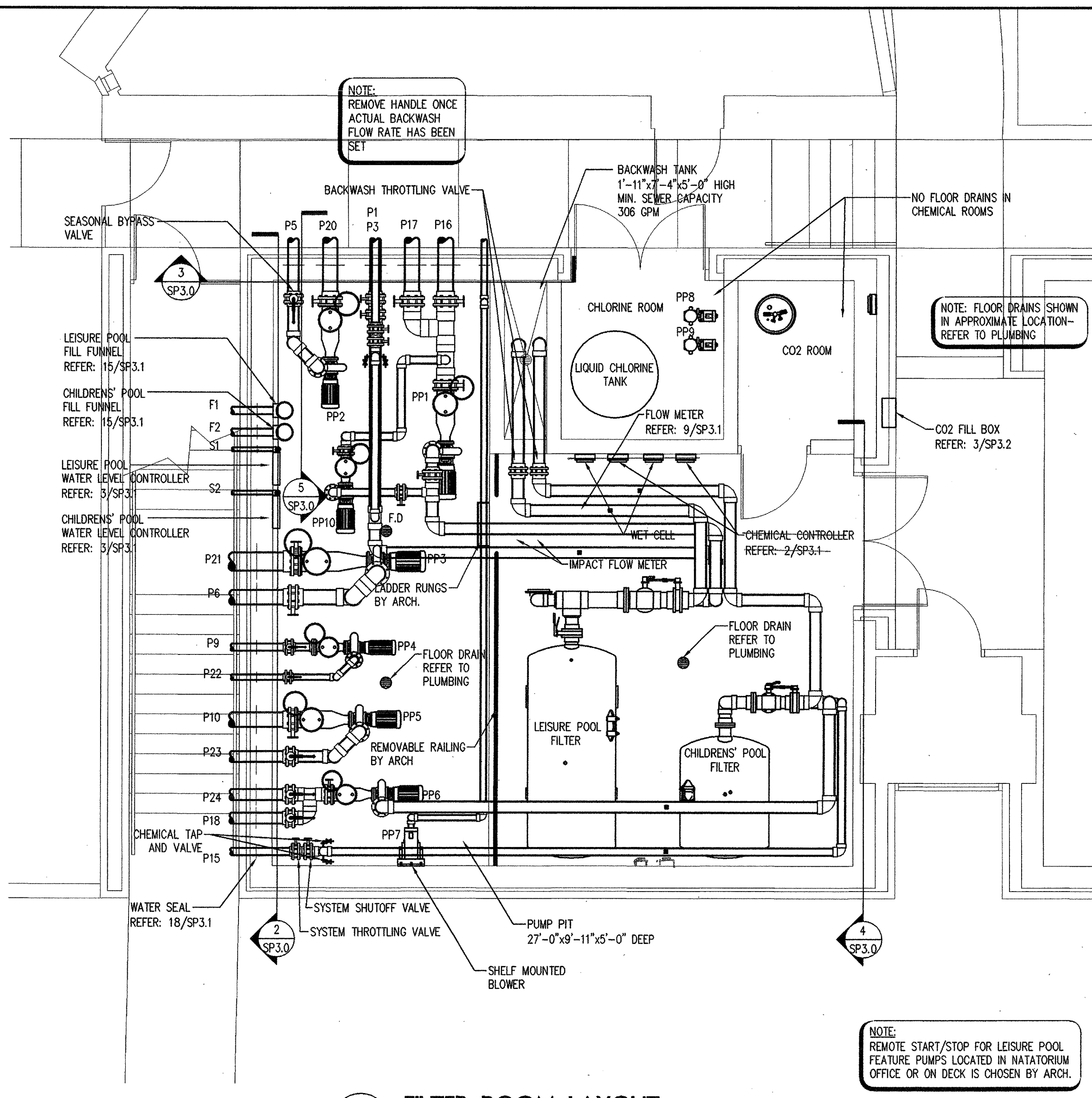
5 SEASONAL BYPASS LINE DETAIL
 1/4" = 1'-0"
 12/14/01



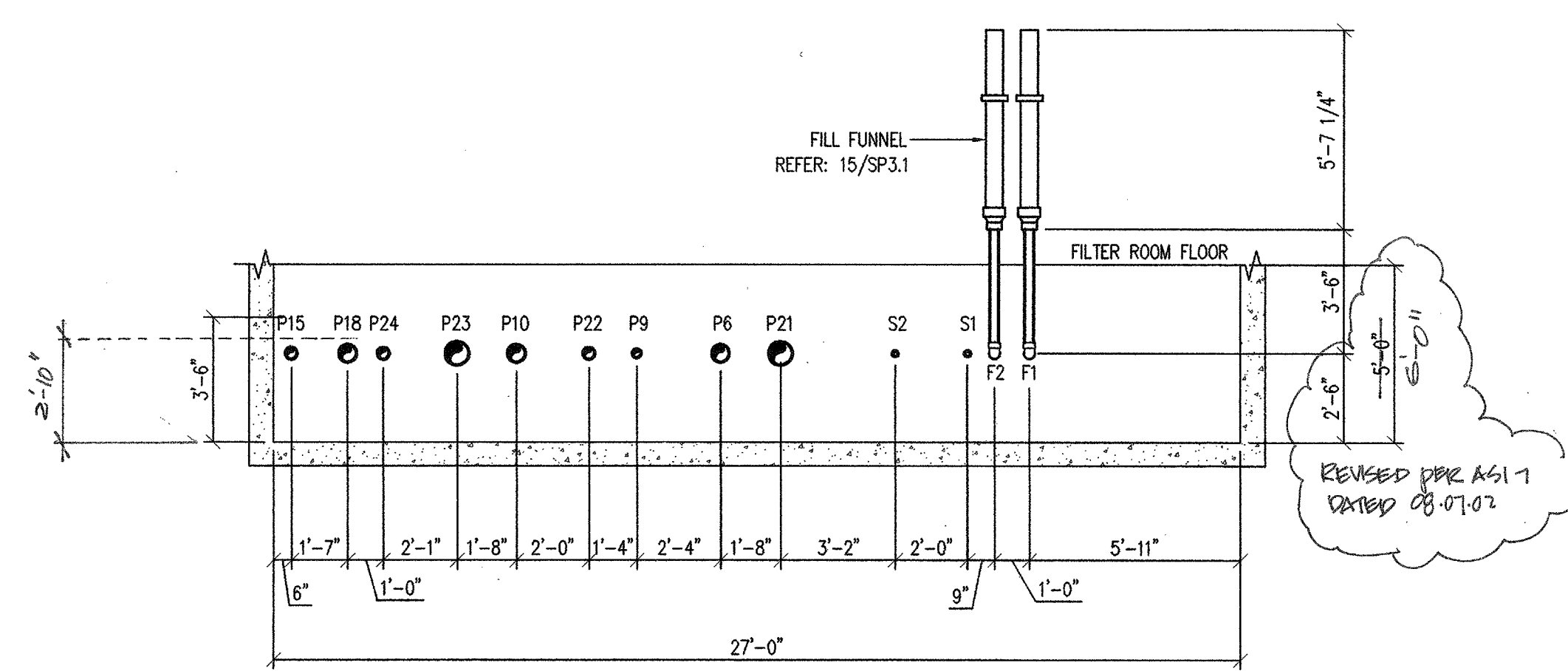
7.01/03.0
 REVISED PER RF 80 DATED 02.15.03



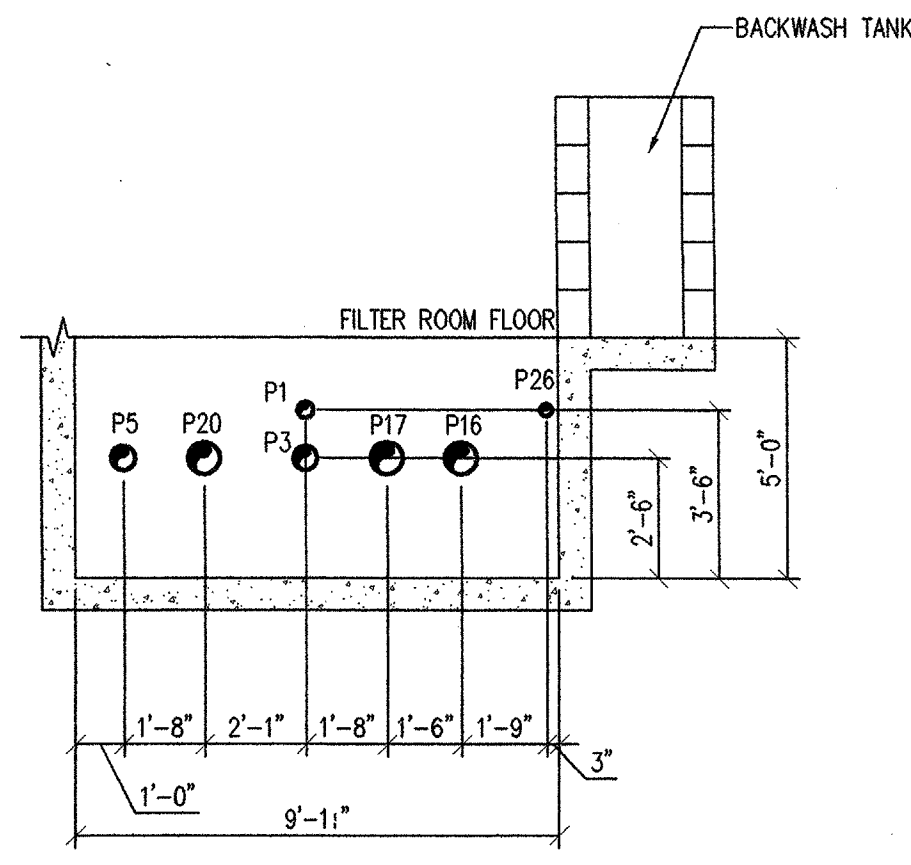
8.01/03.0
 REVISED PER RF 41
 DATED 02.11.03
 NOT TO SCALE



1 FILTER ROOM LAYOUT
 1/4" = 1'-0"
 12/10/01



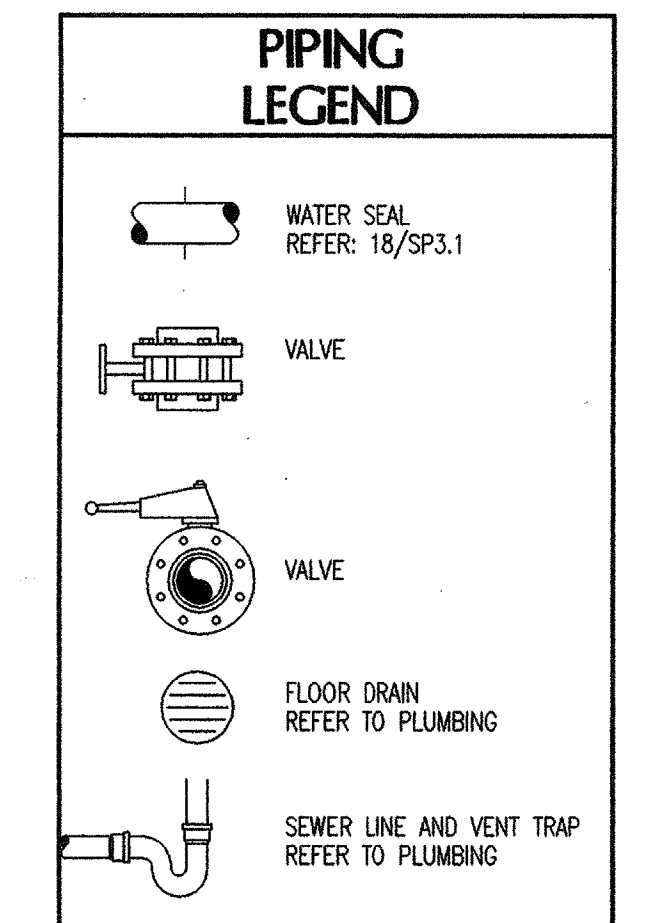
2 PUMP PIT SECTION
 1/4" = 1'-0"
 12/10/01



3 PUMP PIT SECTION
 1/4" = 1'-0"
 12/11/01

PUMP SCHEDULE			
ID	DESCRIPTION	GPM	TOH
PP1	LEISURE POOL RECIRCULATION PUMP	790	60
PP2	VORTEX PUMP	500	40
PP3	WATER FALL PUMP	750	40
PP4	LEISURE POOL HYDROTHERAPY PUMP	190	40
PP5	CHILDREN'S WATER FEATURE PUMP	1000	40
PP6	CHILDREN'S POOL RECIRCULATION PUMP	250	60
PP7	AIR BLOWER	70 SCFM @ 75" H2O	3
PP8	STENNER PUMP	-	-
PP9	STENNER PUMP	-	-
PP10	SEASONAL BYPASS	200	60

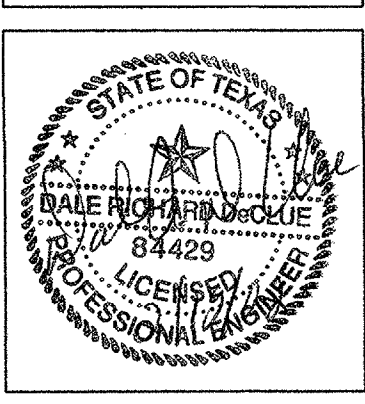
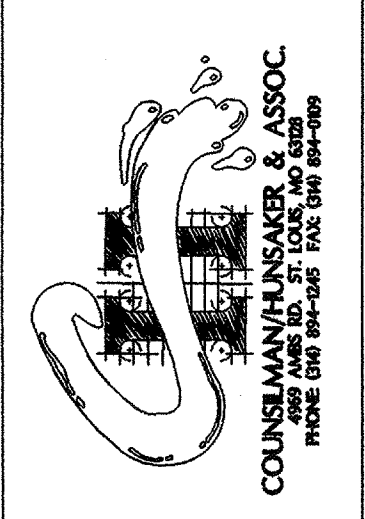
PIPING SCHEDULE		
ID	SIZE	DESCRIPTION
P1	6"	TO UPPER POOL INLETS - 1
P2	4"	TO UPPER POOL INLETS - 2
P3	4"	TO LOWER POOL INLETS - 1
P4	3"	TO LOWER POOL INLETS - 2
P5	6"	TO VORTEX NOZZLE
P6	6"	WATER FALL PRIMARY
P7	3"	LOWER POOL FEATURE
P8	6"	TO WATERFALL BRANCH
P9	3"	TO HYDROTHERAPY INLETS
P10	6"	TO WATER FEATURES VALVE BOX
P11	3"	TO SPRAYBAR
P12	4"	TO AQUADUCT
P13	2"	TO WATER WHOPPY
P14	2"	TO WALLSPRAY
P15	4"	TO CHILDREN'S POOL INLETS
P16	8"	FROM LEISURE POOL SWIMMERS
P17	8"	FROM LEISURE POOL MAIN DRAINS
P18	6"	FROM CHILDREN'S POOL MAIN DRAINS - 1
P19	4"	FROM CHILDREN'S POOL SWIMMERS - 2
P20	8"	FROM VORTEX MAIN DRAIN
P21	8"	FROM WATER FALL MAIN DRAINS
P22	4"	FROM HYDROTHERAPY MAIN DRAIN
P23	8"	FROM WATER FEATURES MAIN DRAINS
P24	6"	FROM CHILDREN'S POOL MAIN DRAINS
P25	2"	EQUALIZER TAP
P26	3"	FROM BLOWER TO BUBBLE COUCH
F1	3"	LEISURE POOL FILL LINE
F2	3"	CHILDREN'S POOL FILL LINE
S1	2"	LEISURE POOL STATIC LINE
S2	2"	CHILDREN'S POOL STATIC LINE



ISSUE DATE
FEB. 20, 2002
 REVISIONS

**ADDISON ATHLETIC CLUB EXPANSION
 AND
 LEISURE POOL**
 ADDISON, TEXAS

RON HOBBS ARCHITECTS
 614 W. MAIN ST., SUITE 4000 GARLAND, TEXAS 75040
 (972) 494-0174 FAX (972) 494-0722



JOB NUMBER
0012

SHEET NUMBER
SP3.0
 100% CD