

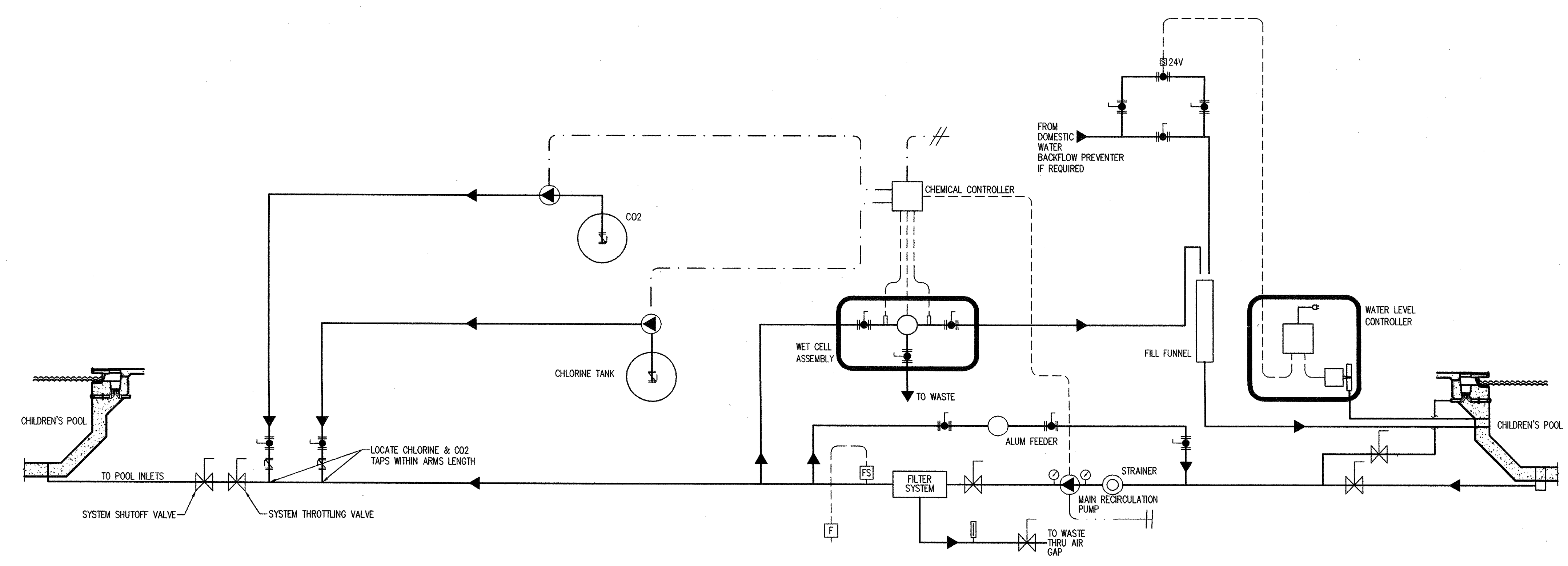
LEGEND

---	ELECTRICAL LINE
---	WATER LINE
---	AIR LINE
---	1 PHASE POWER
---	3 PHASE POWER
---	VENT LINE

SYMBOL LEGEND

[Symbol]	BUTTERFLY VALVE
[Symbol]	CHECK VALVE
[Symbol]	PRESSURE/VACUUM/COMPOUND GAUGE
[Symbol]	BALL VALVE
[Symbol]	ELECTRIC BALL VALVE
[Symbol]	IMPACT FLOW METER
[Symbol]	THERMOMETER
[Symbol]	DIGITAL THERMOMETER
[Symbol]	SOLENOID VALVE
[Symbol]	VENTURI
[Symbol]	POWER CORD
[Symbol]	HAIR AND LINT STRAINER
[Symbol]	FLOW SENSOR
[Symbol]	FLOW METER
[Symbol]	FLOW INTERLOCK
[Symbol]	PUMP

1 LEISURE POOL CHEMICAL SCHEMATIC
 SP3.3 N.T.S. 12/24/01



LEGEND

---	ELECTRICAL LINE
---	WATER LINE
---	AIR LINE
---	1 PHASE POWER
---	3 PHASE POWER
---	VENT LINE

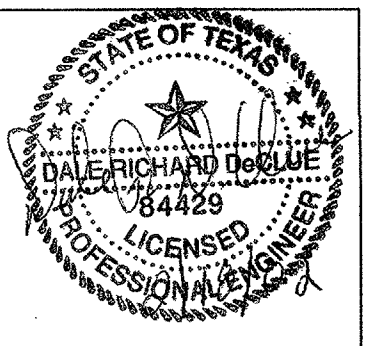
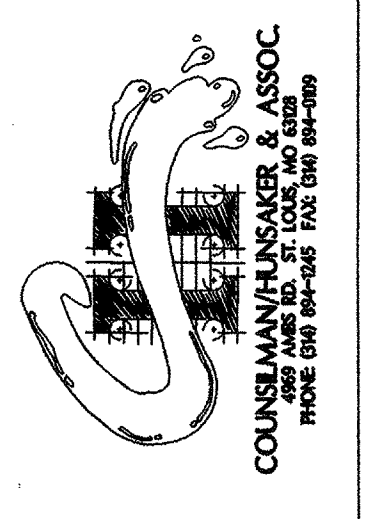
SYMBOL LEGEND

[Symbol]	BUTTERFLY VALVE
[Symbol]	CHECK VALVE
[Symbol]	PRESSURE/VACUUM/COMPOUND GAUGE
[Symbol]	BALL VALVE
[Symbol]	ELECTRIC BALL VALVE
[Symbol]	IMPACT FLOW METER
[Symbol]	THERMOMETER
[Symbol]	DIGITAL THERMOMETER
[Symbol]	SOLENOID VALVE
[Symbol]	VENTURI
[Symbol]	POWER CORD
[Symbol]	HAIR AND LINT STRAINER
[Symbol]	FLOW SENSOR
[Symbol]	FLOW METER
[Symbol]	FLOW INTERLOCK
[Symbol]	PUMP

2 CHILDREN'S POOL CHEMICAL SCHEMATIC
 SP3.3 N.T.S. 12/24/01

**ADDISON ATHLETIC CLUB EXPANSION
 AND
 LEISURE POOL**
 ADDISON, TEXAS

RON HOBBS ARCHITECTS
 614 W. MAIN ST. SUITE #300 GARLAND, TEXAS 75040
 (972) 494-0174 FAX (972) 494-0174



JOB NUMBER
0012

SHEET NUMBER
SP3.3
 100% CD