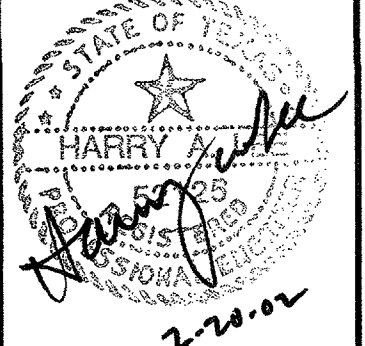


ADDISON ATHLETIC CLUB EXPANSION
AND
LEISURE POOL
ADDISON, TEXAS

RON HOBBS ARCHITECTS

614 W. MAIN ST., SUITE #200 GARLAND, TEXAS 75040
(972) 494-0174

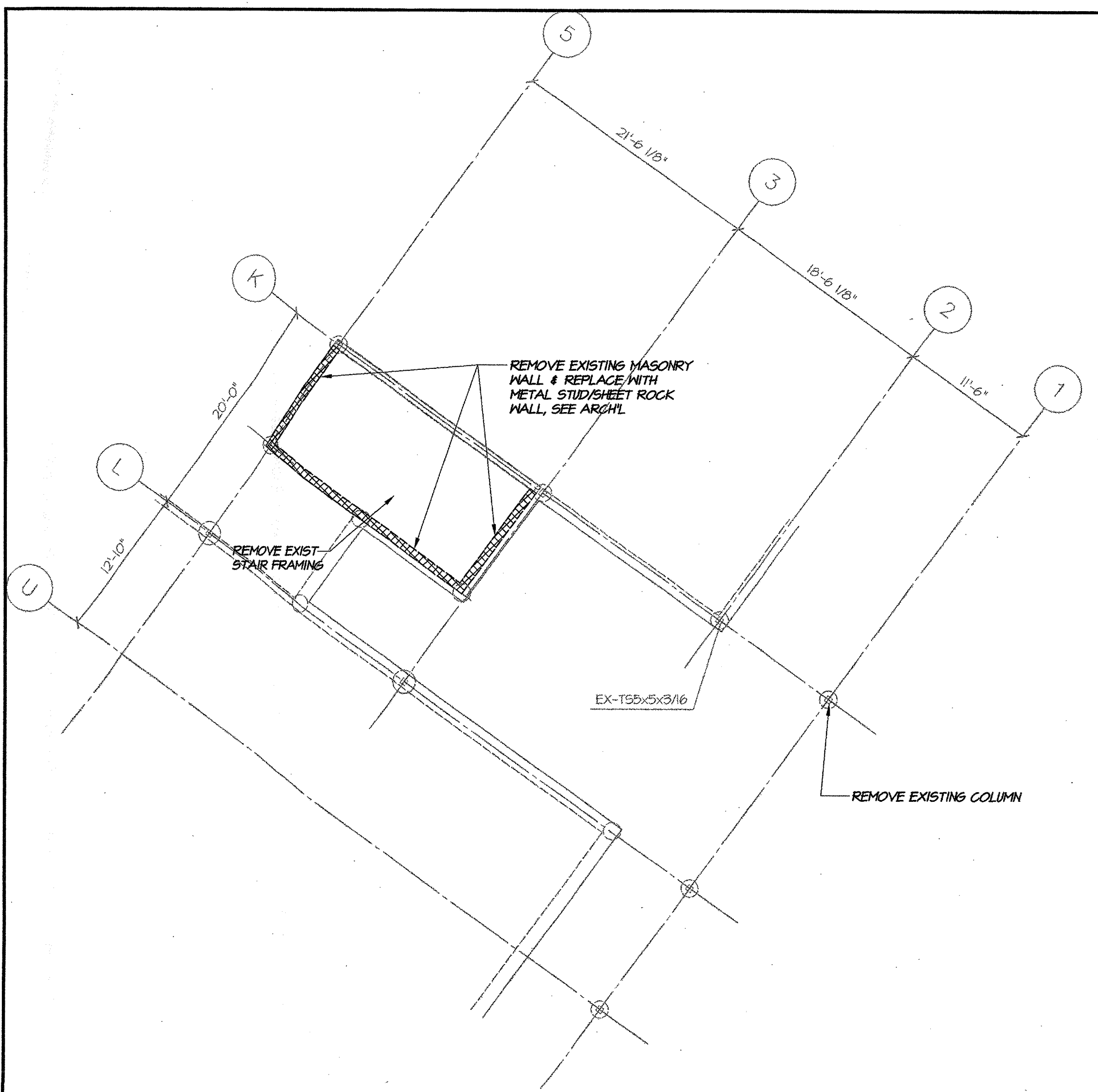
Lee & Baldauf
Consulting Engineers Inc.
15980 Parcours Drive
214-942-0389 Fax 214-942-2800



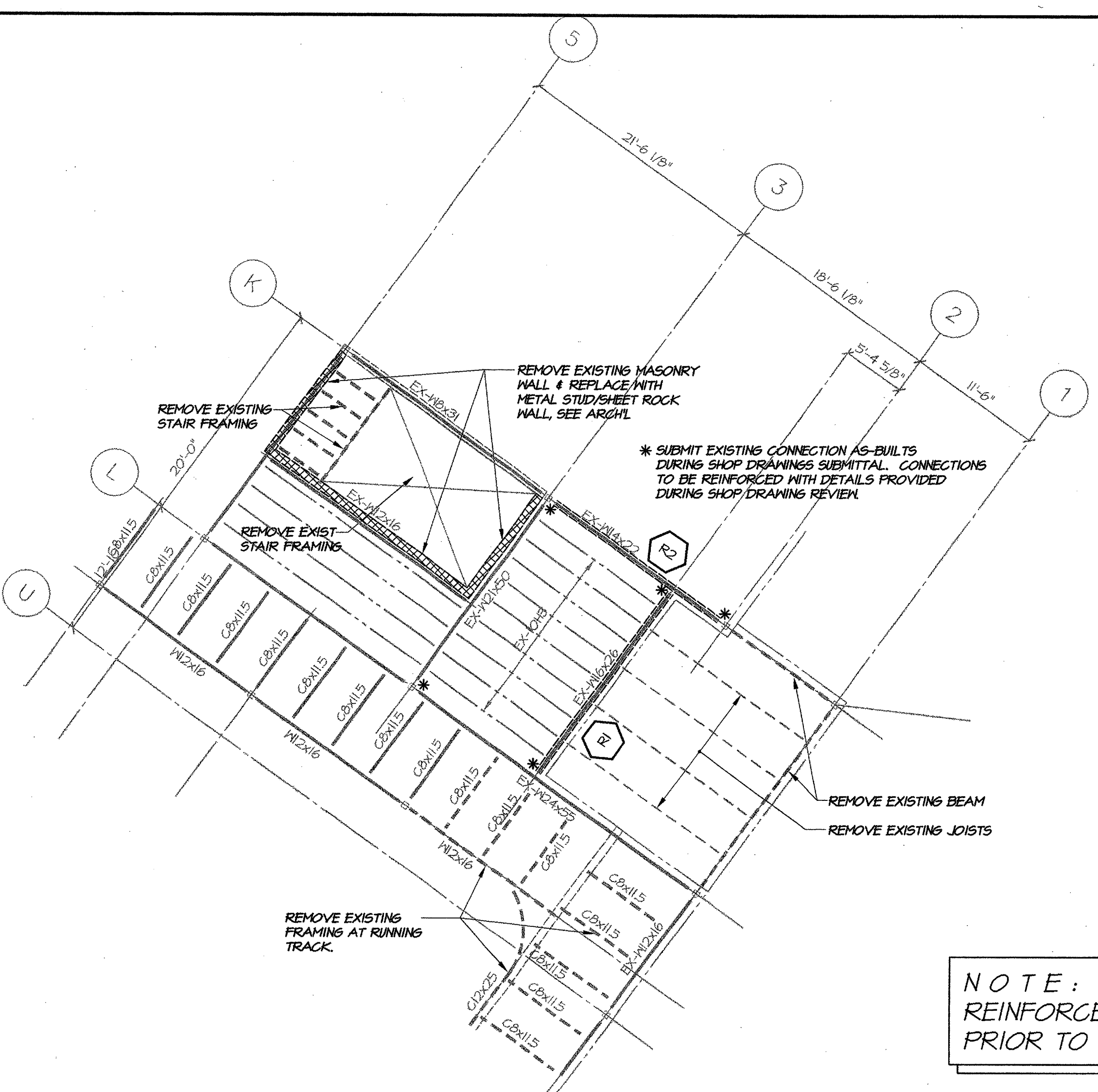
JOB NUMBER
0012
JOB NAME
ADDISON ATHLETIC CLUB
EXPANSION & LEISURE POOL

SHEET DESCRIPTION
DEMO PLAN
SHEET NUMBER

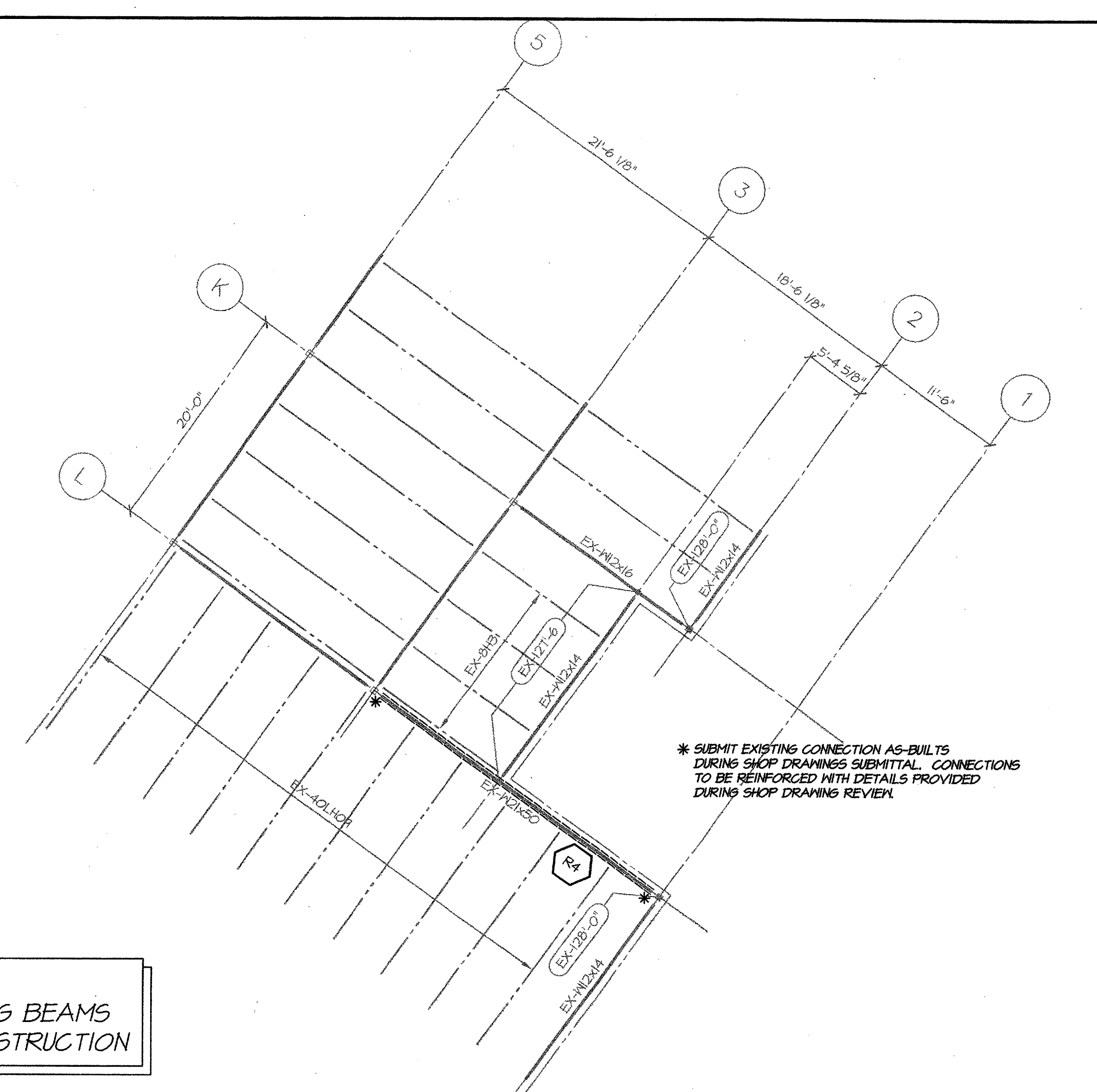
\$2.00



01 EXISTING FOUNDATION PLAN
\$2.00 1/8"=1'-0"

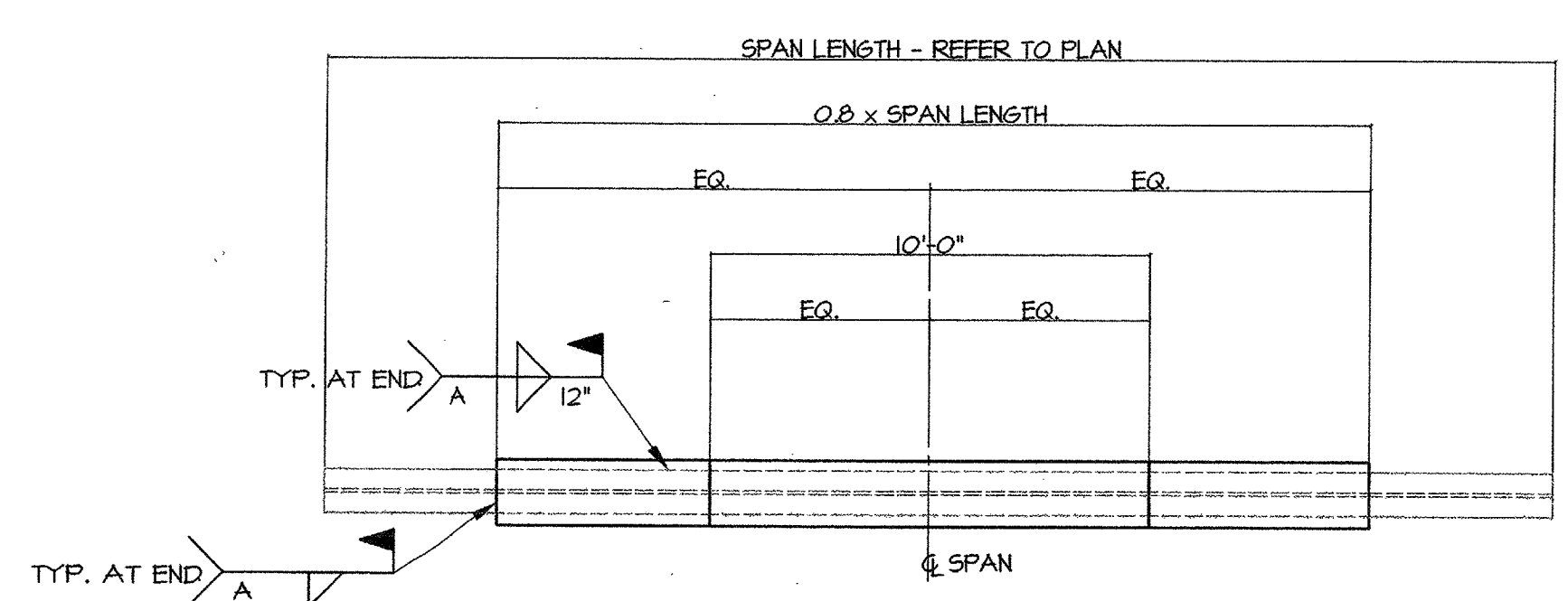


02 EXISTING SECOND FLOOR PLAN
\$2.00 1/8"=1'-0"



03 EXISTING ROOF FRAMING PLAN
\$2.00 1/8"=1'-0"

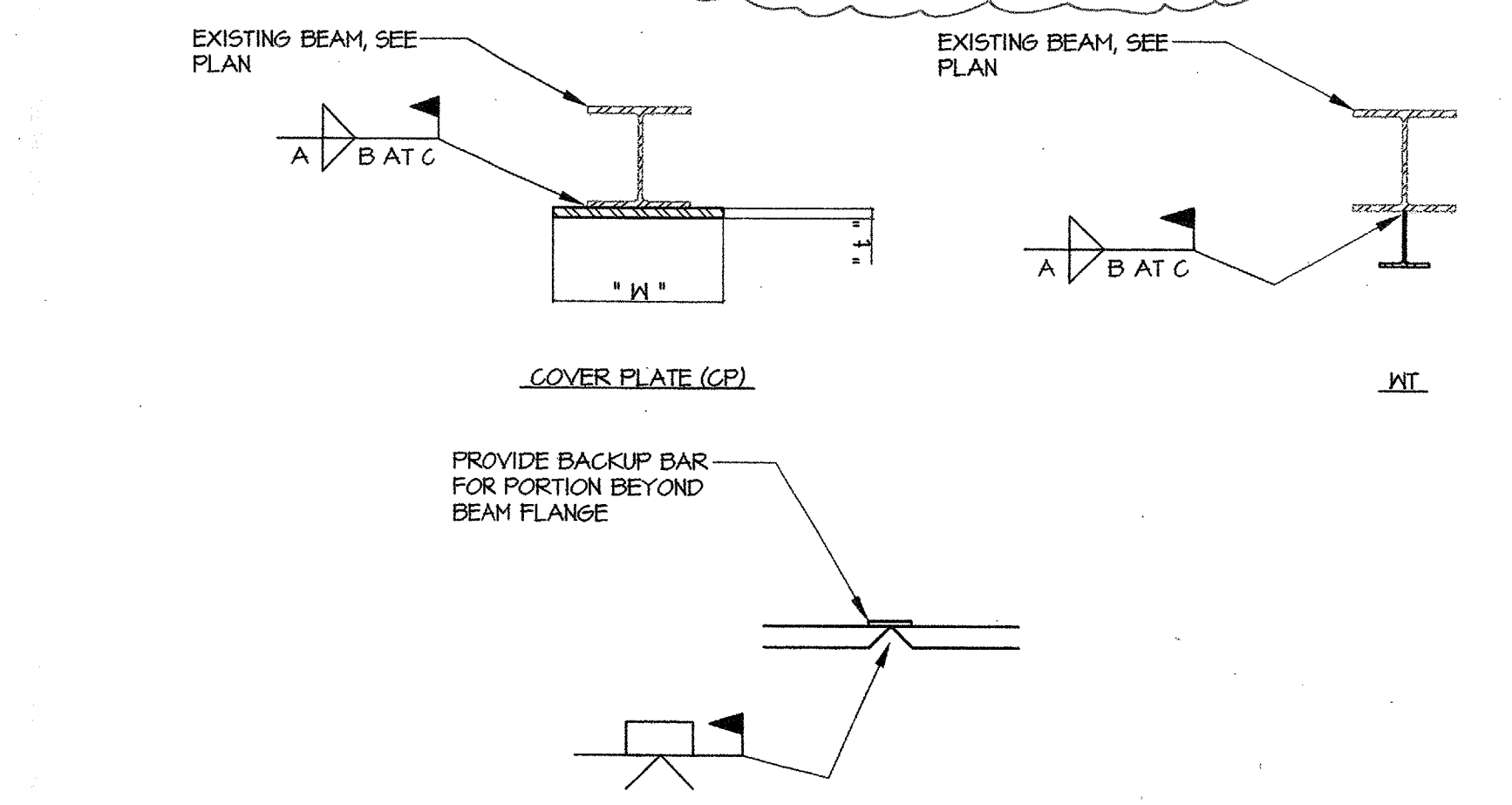
NOTE:
REINFORCE EXISTING BEAMS
PRIOR TO NEW CONSTRUCTION



SCHEDULE for COVER PLATE or WT

MARK	TYPE	SIZE CP: L x W or WT: d x Wt.	WELD A (in.)	B (in.)	C (in.)	REMARK
R1	WT	5 x 11	1/8	4	12	
R2	WT	4 x 14	1/4	4	12	
R3	WT	8 x 20	3/8	4	12	
R4	WT	6 x 17.5				
R5	WT	7 x 15				FULL LENGTH OF BEAMING BEAM

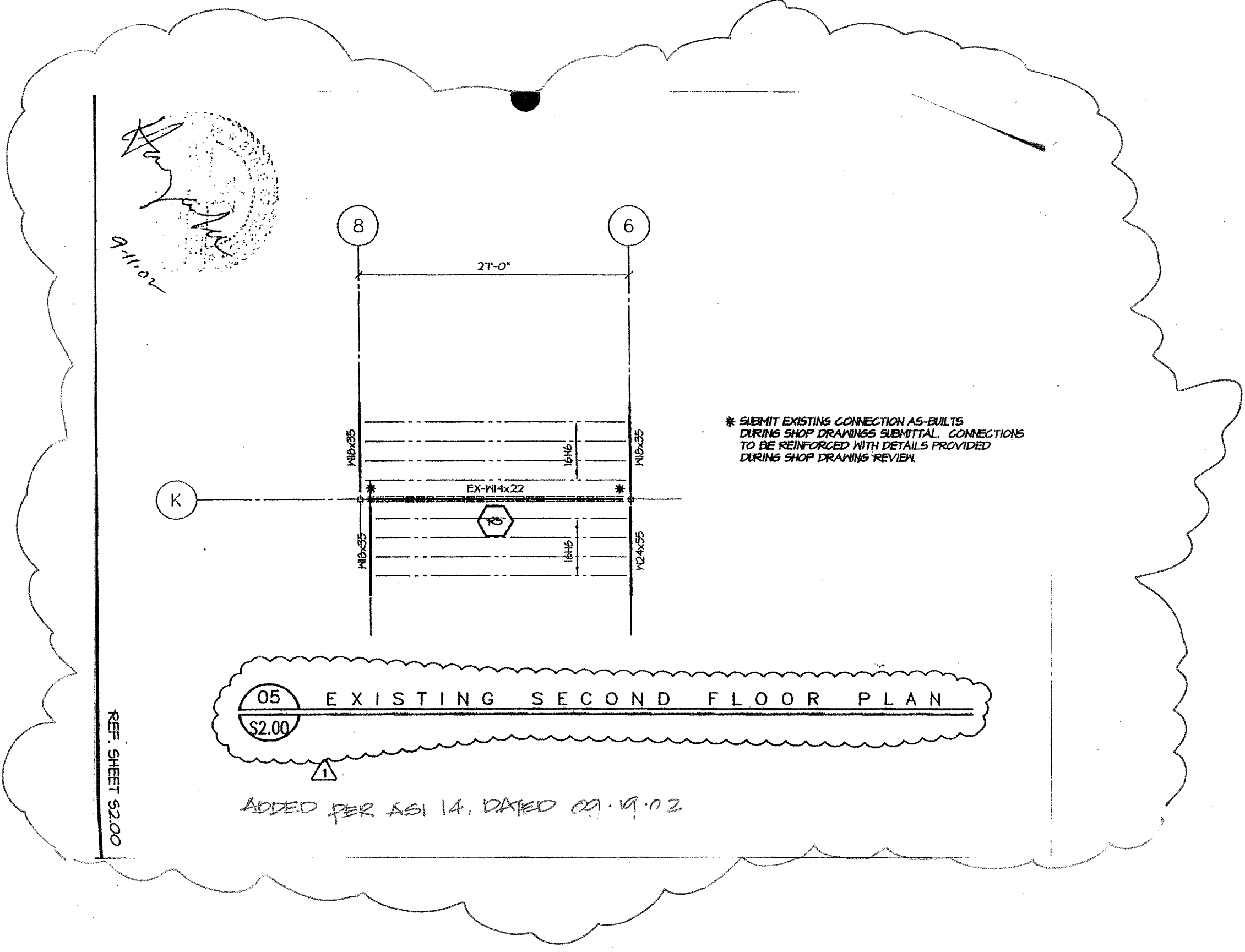
ADDED PER ASI 14, DATED 02.19.02



WELD NOTES:
1. FULL PENETRATION WELD IN COVER PLATE
2. FULL PENETRATION WELD IN FLANGE AND WEB OF "WT".

FIELD SPICE

REINFORCING of EXISTING BEAMS
04 TYPICAL DETAIL
\$2.00



05 EXISTING SECOND FLOOR PLAN
\$2.00
ADDED PER ASI 14, DATED 02.19.02

DRAWING INDEX

GENERAL NOTES	51.01
DEMO PLAN	52.00
TYPICAL FOUNDATION DETAILS	53.01
PIER SCHEDULE	53.01
TYPICAL POOL DETAILS	53.02
TYPICAL CMU DETAILS	54.01
TYPICAL FLOOR DETAILS	55.01
TYPICAL ROOF DETAILS	56.01