

Lee & Baldau
Consulting Engineers Inc.
12980 Pandora Drive
Dallas, Texas 75238
214-342-0389 Fax 214-342-2800

ADDISON ATHLETIC CLUB

SK-20

DATE: 9-26-02

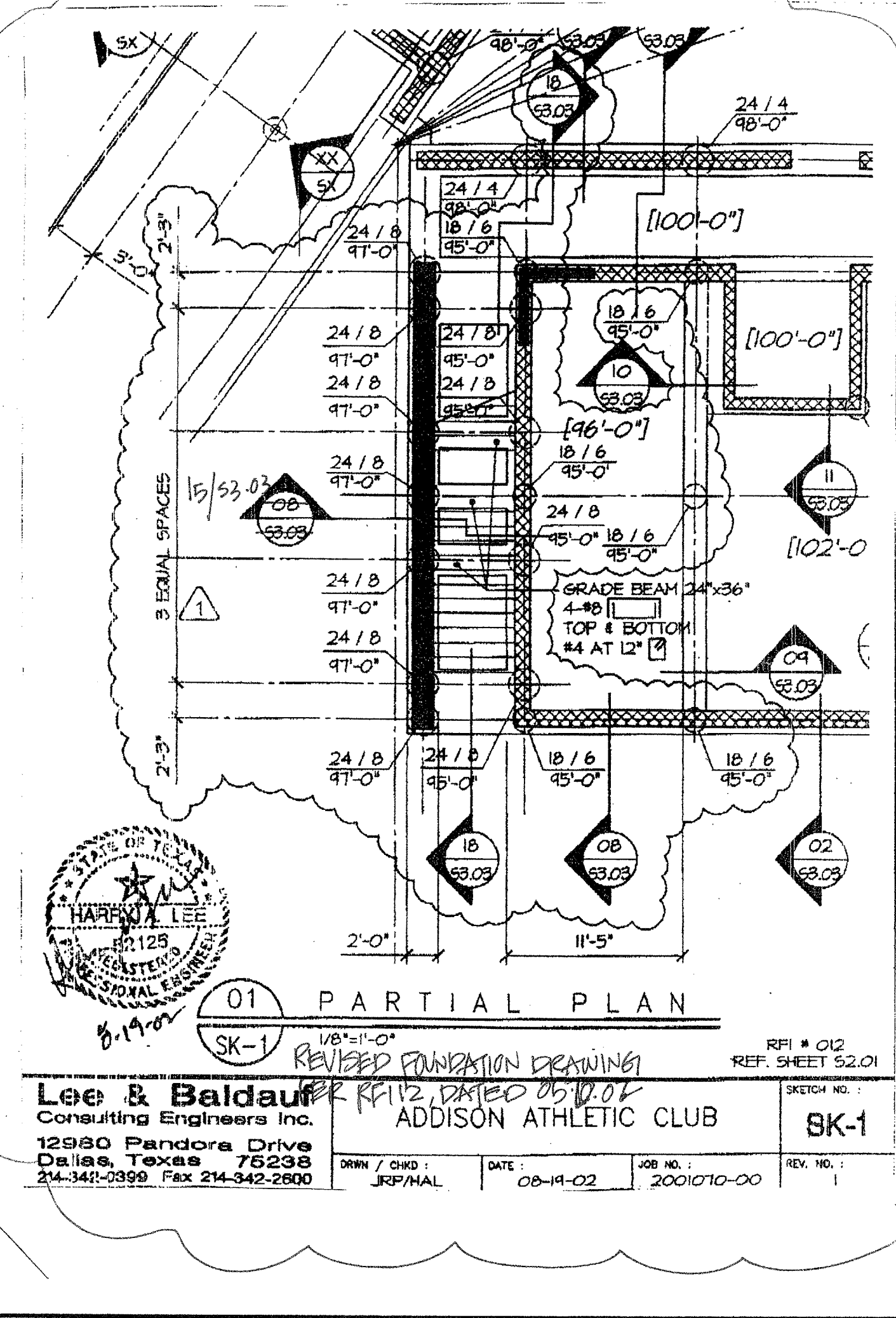
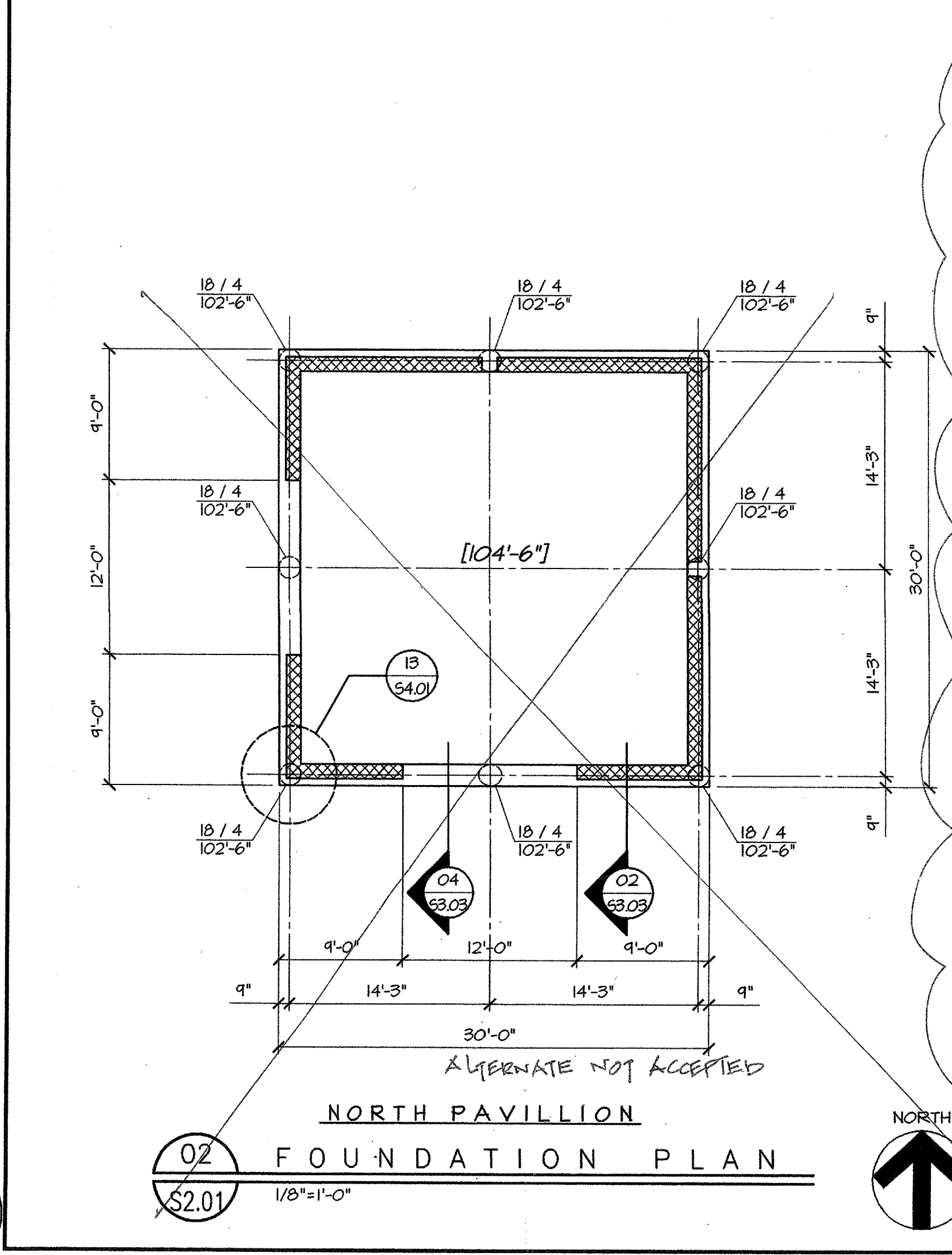
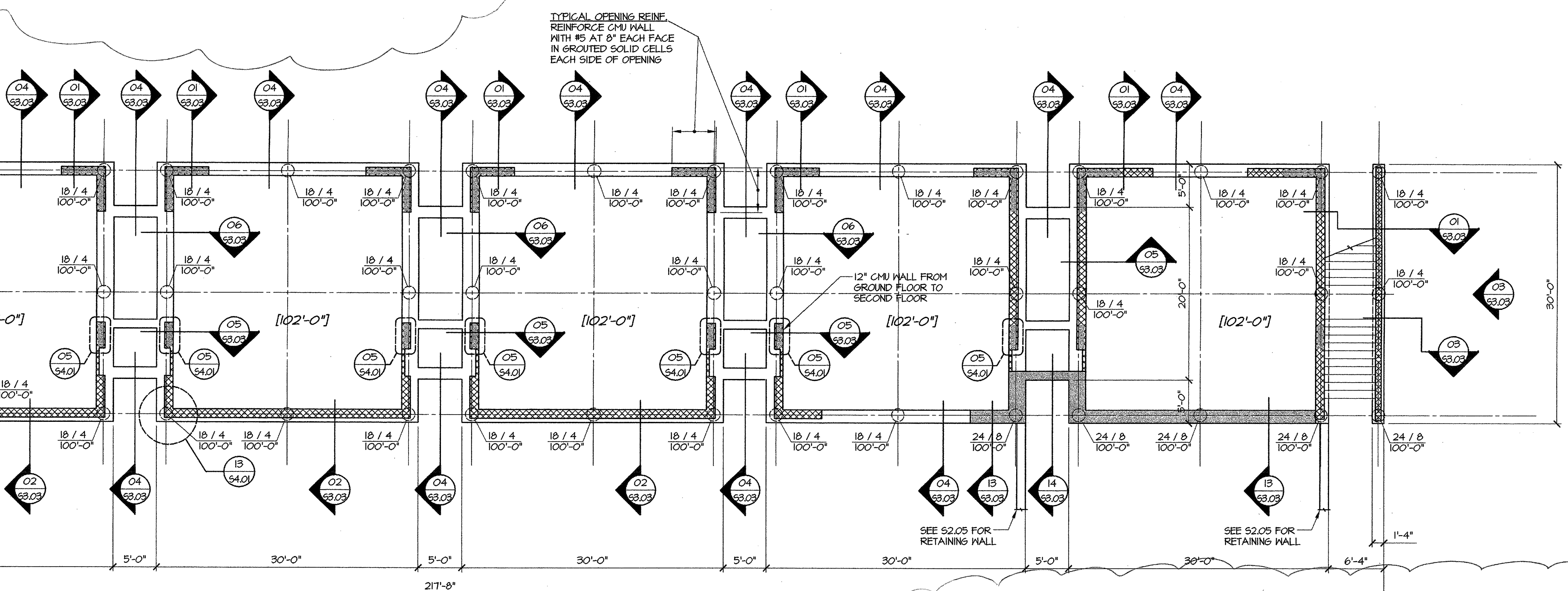
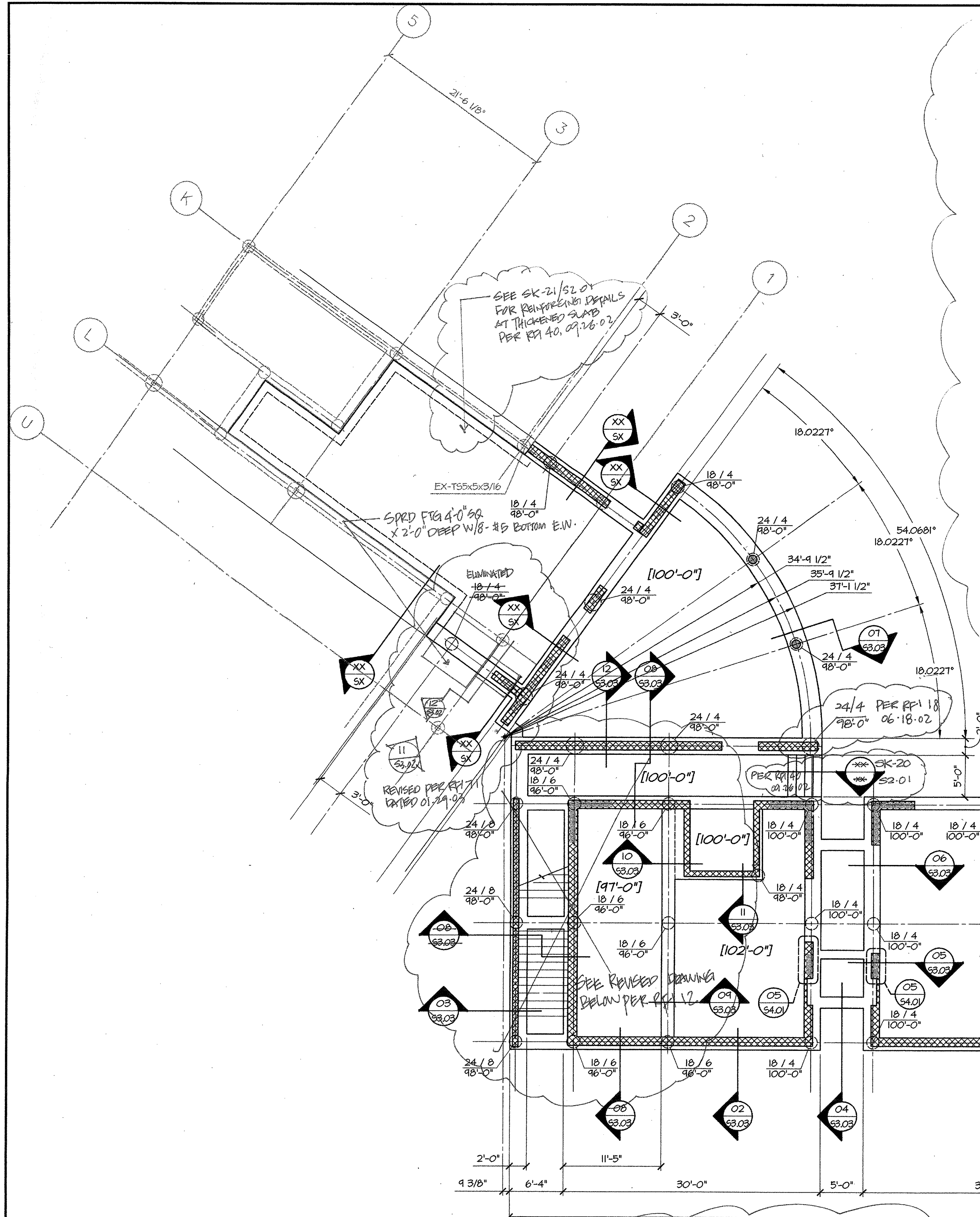
Lee & Baldau
Consulting Engineers Inc.
12980 Pandora Drive
Dallas, Texas 75238
214-342-0389 Fax 214-342-2800

ADDISON ATHLETIC CLUB

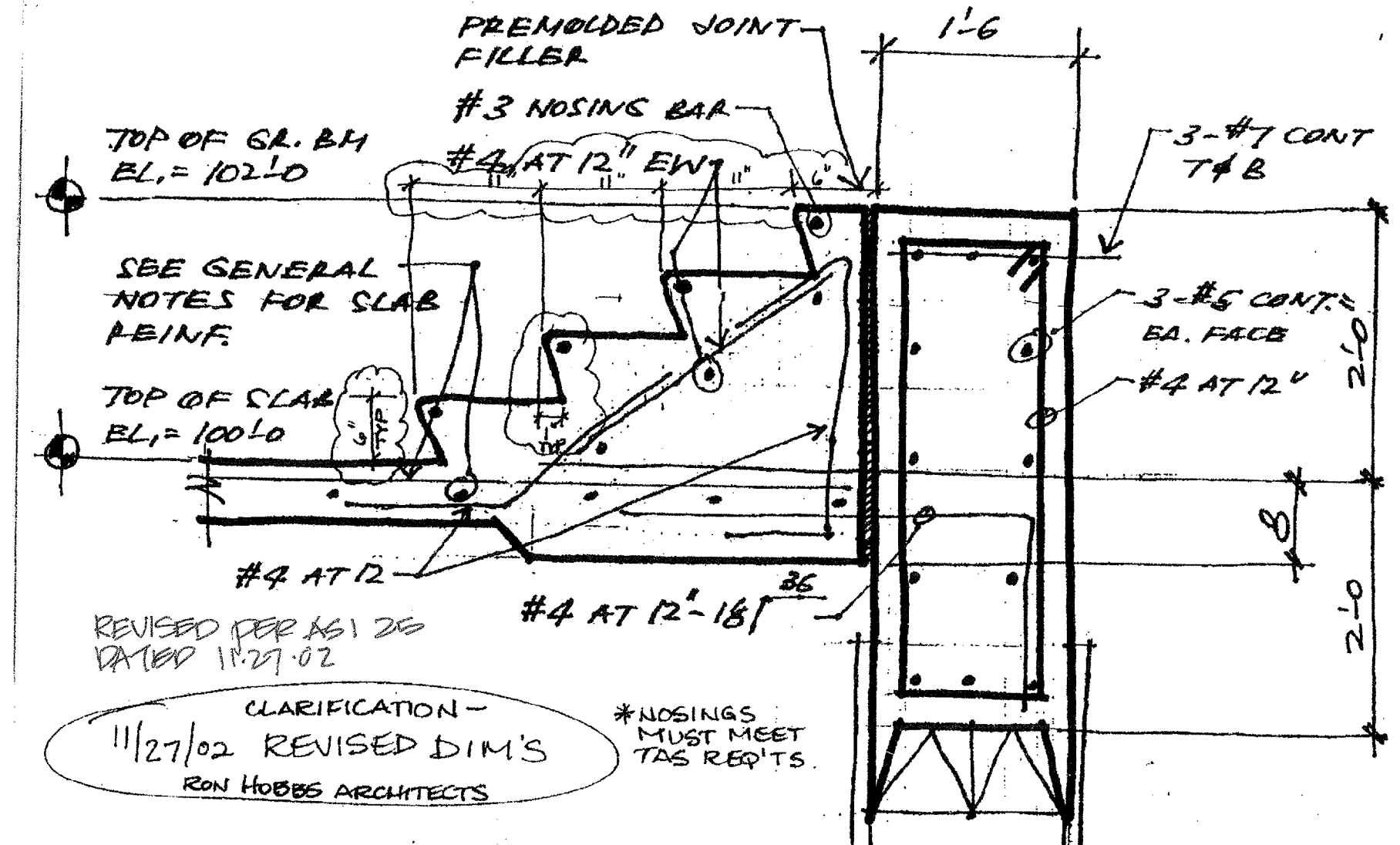
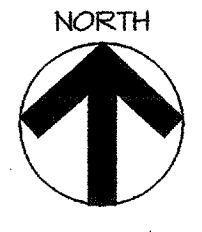
SK-21

DATE: 9-26-02

REF 40, DATED 09-26-02



- 01 FOUNDATION PLAN**
- PLAN NOTES:
- TOP OF SLAB ELEVATION = 100'-0" (DATUM = 60550') TYPICAL UNO. DIFFERENT FLOOR ELEVATIONS ARE SHOWN ON PLAN THIS (XXX'-XXX')
 - PIERS SHALL BE LOCATED AT INTERSECTION OF GRIDS UNO. WHERE PIERS ARE SHOWN AWAY FROM GRIDS, LOCATE PIERS AT CENTERLINE OF GRADE BEAMS.
 - NOTE SPECIAL DOVEL REQUIREMENTS FOR SECTION 15/53.05.

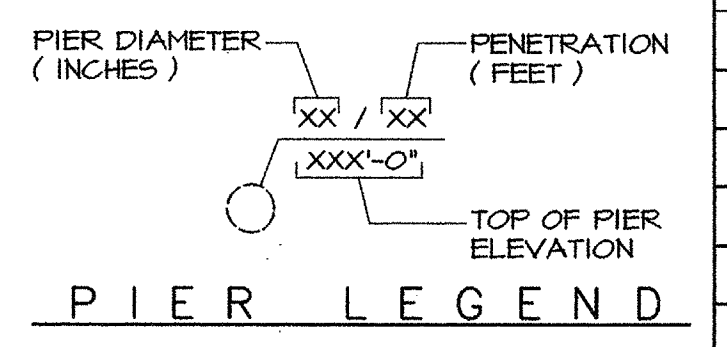


Lee & Baldau
Consulting Engineers Inc.
12980 Pandora Drive
Dallas, Texas 75238
214-342-0389 Fax 214-342-2800

ADDISON ATHLETIC CLUB

SK-20

DATE: 9-26-02



DRAWING INDEX	
GENERAL NOTES	S1.01
DEMO PLAN	S2.00
TYPICAL FOUNDATION DETAILS	S3.01
PIER SCHEDULE	S3.01
TYPICAL POOL DETAILS	S3.02
TYPICAL CHU DETAILS	S4.01
TYPICAL FLOOR DETAILS	S5.01
TYPICAL ROOF DETAILS	S6.01