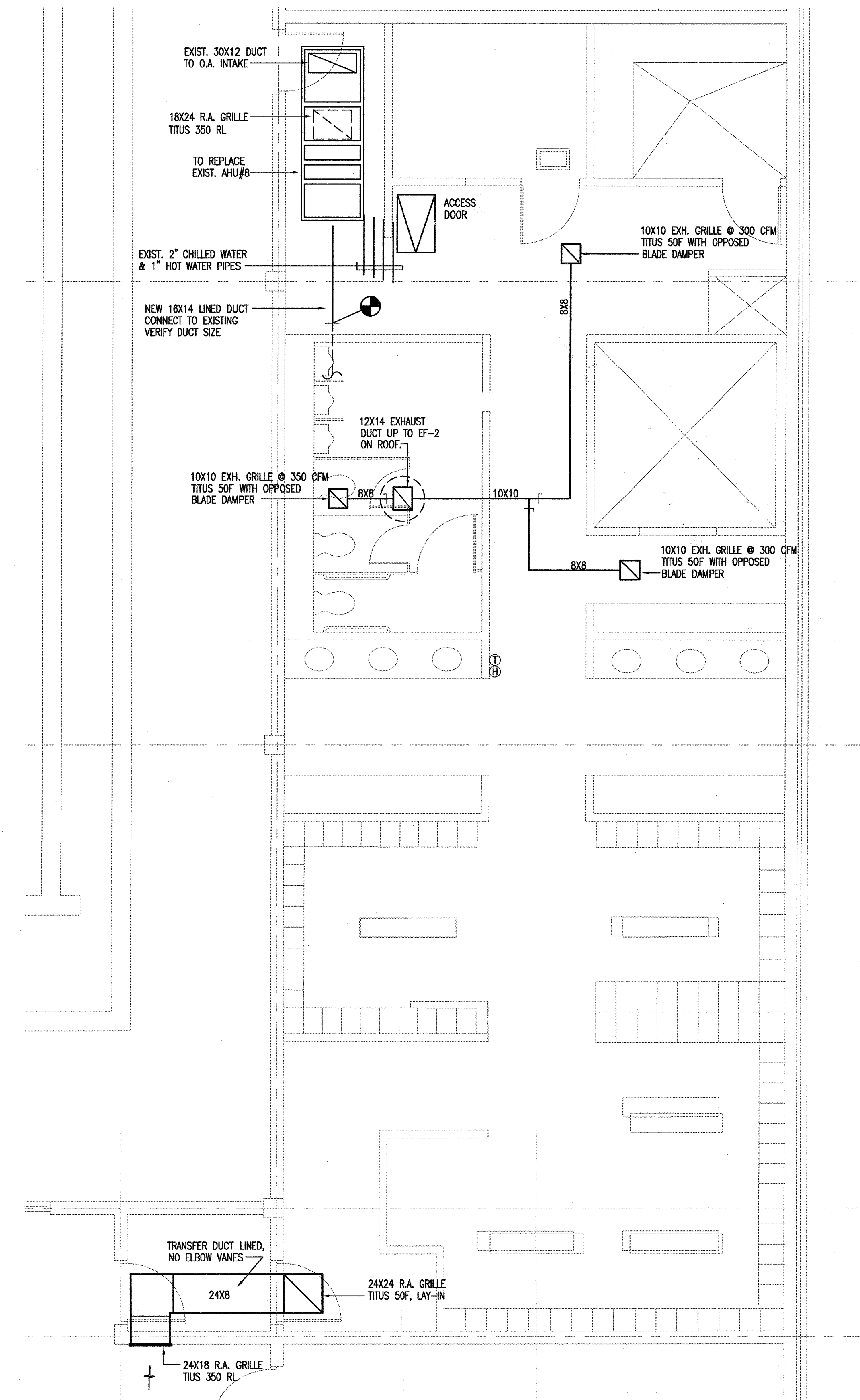
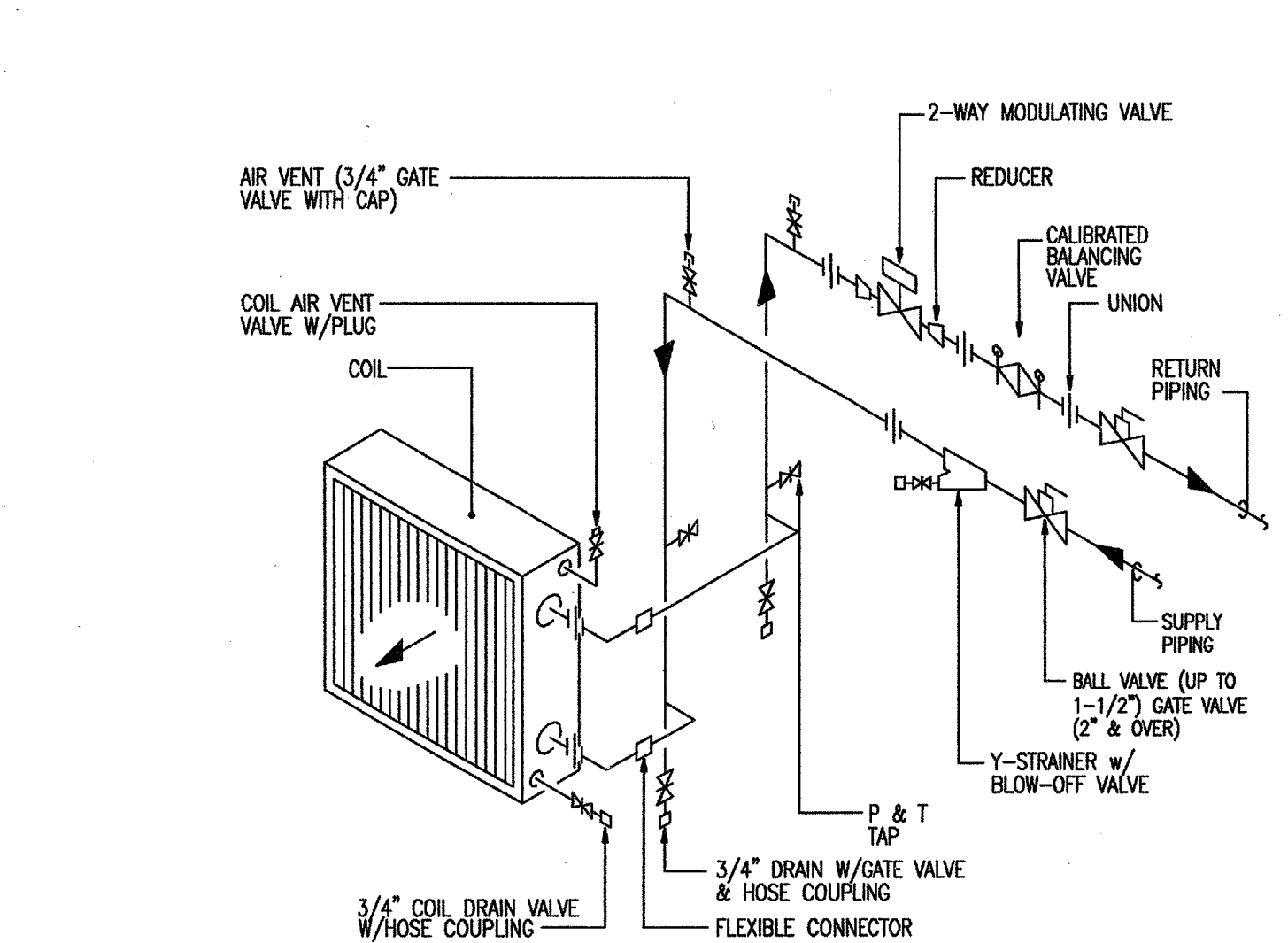


1 women's locker room - hvac
 SCALE: 1/4" = 1' - 0"



2 men's locker room - hvac
 SCALE: 1/4" = 1' - 0"



3 typical unit piping detail
 scale: n.t.s.

CONDENSATE DRAINS
 RUN 1" PRIMARY DRAIN TO
 CLOSEST FLOOR DRAIN, 1/2"
 SECONDARY DRAIN TO CLOSEST
 LAVATORY (TERMINATE WITH
 CEILING ESCUTCHEON)

UNIT		MODEL & MANUFACTURE'S	PART	CFM	S.P. W.G.	RPM	H.P.	VOLT/PH.	CAP. MBH	%O.A. MIN/MAX	COOLING COILS				E.A.T.		L.A.T.		CONTROL VALVE	WEIGHT	REMARKS	
MARK											FACE AREA	MIN ROWS/FNS	P.D. AIR	P.D. WATER	GPM @ F	PIPE SIZE	DB	WB	DB	WB		
AHU-8	CARRIER	39M03	FAN	1400	1.0"	-	1.5	208/3	-	20%	-	-	-	-	-	-	-	-	-	-	1300	NEW AHU TO REPLACE EXISTING AHU-8
			COOLING COIL	-	-	-	-	-	96.1	-	3.47	8/14	1.04"	12"	29.4 @ 44	1.5"	82	69.5	48	48	YES	-
			HEATING COIL	-	-	-	-	-	19.3	-	2.43	1/8	0.27"	0.1"	3.0 @ 120	1.0"	48	-	60	-	-	-
AHU-9	=	AHU-8																				NEW AHU TO REPLACE EXISTING AHU-9

UNIT		S.P. W.G.	RPM	CONTROL	DRIVE	MOTOR		SIZES (MAX)		MANUFACTURER & MODEL NO.		REMARKS
MARK	CFM					H.P.	ELEC	1/6	120 / 1	7.0		
EF-1	950	3/8"	1147	SWITCH	E/BELT	1/6	120 / 1	7.0	LOREN COOK	ACE120C2B		NEW FAN TO REPLACE EXISTING EF-1
EF-2	=	EF-1										NEW FAN TO REPLACE EXISTING EF-2