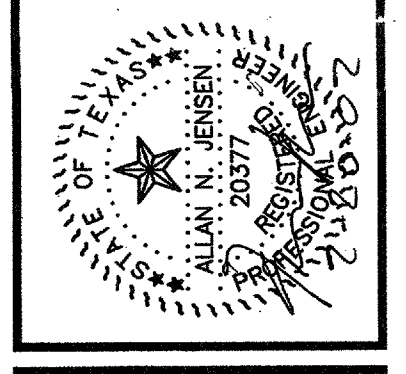


ISSUE DATE	FEB. 20, 2002
REVISIONS	

ADDISON ATHLETIC CLUB EXPANSION
AND
LEISURE POOL
ADDISON, TEXAS

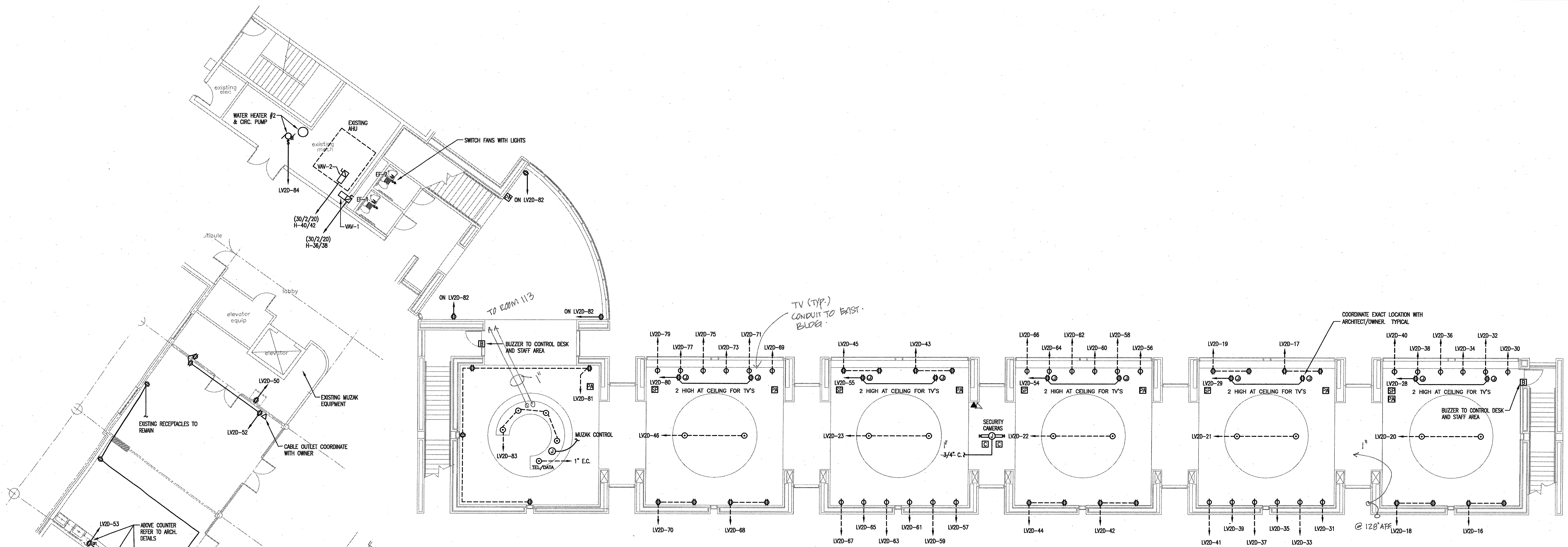
RON HOBBS ARCHITECTS
614 W. MAIN ST. SUITE #200 GARLAND, TEXAS 75040
(972) 9940174 FAX (972) 4940722

RAH Associates, Inc.
ENGINEERS ARCHITECTS PLANNERS INTERIORS
801 W. NORTHWEST PL. SUITE 200
DALLAS, TEXAS 75208
(214) 348-8200
FAX (214) 348-8205
A09 18488



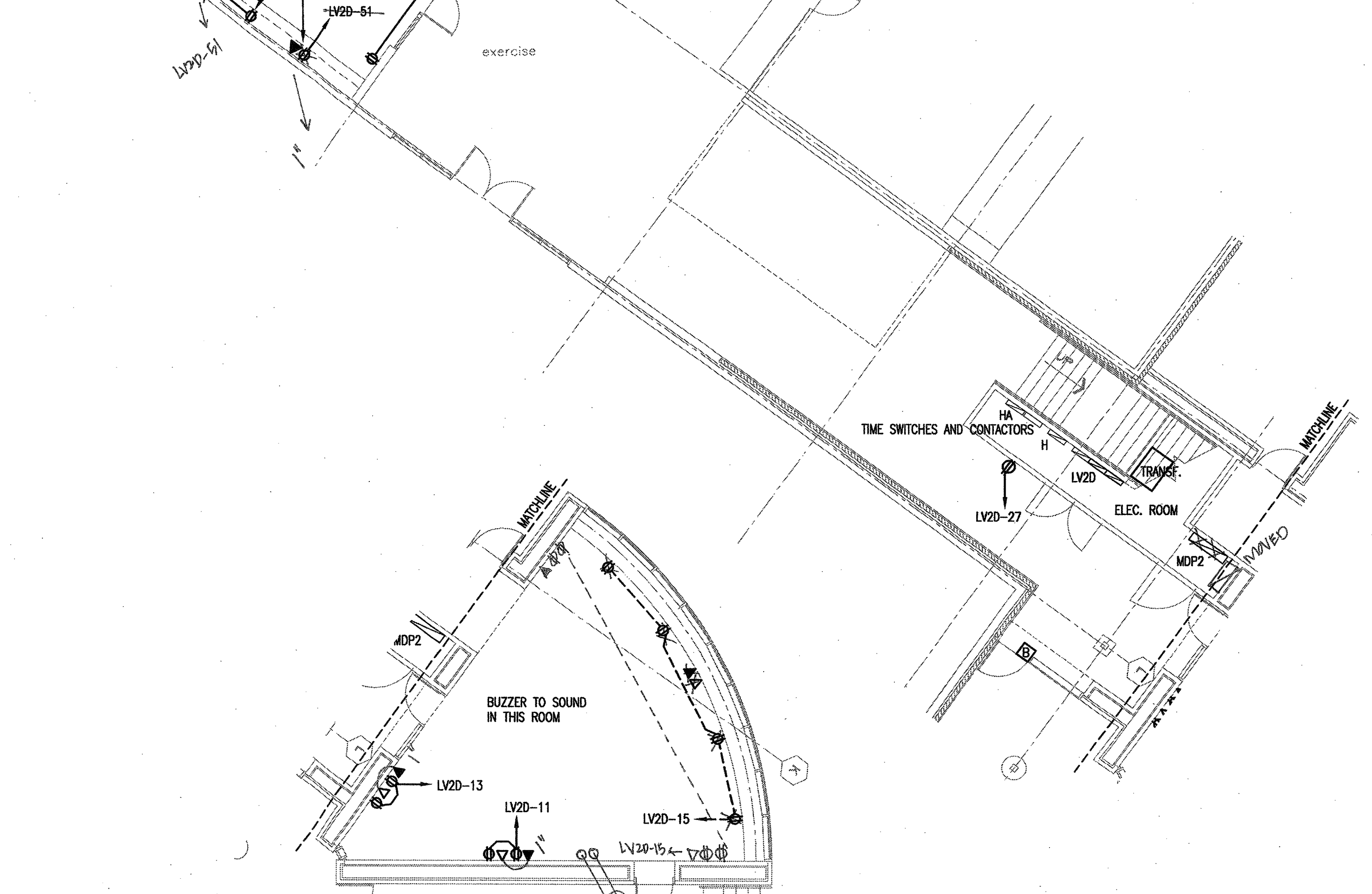
JOB NUMBER
0012

SHEET NAME
ELECTRICAL PLAN
SHEET NUMBER
E102

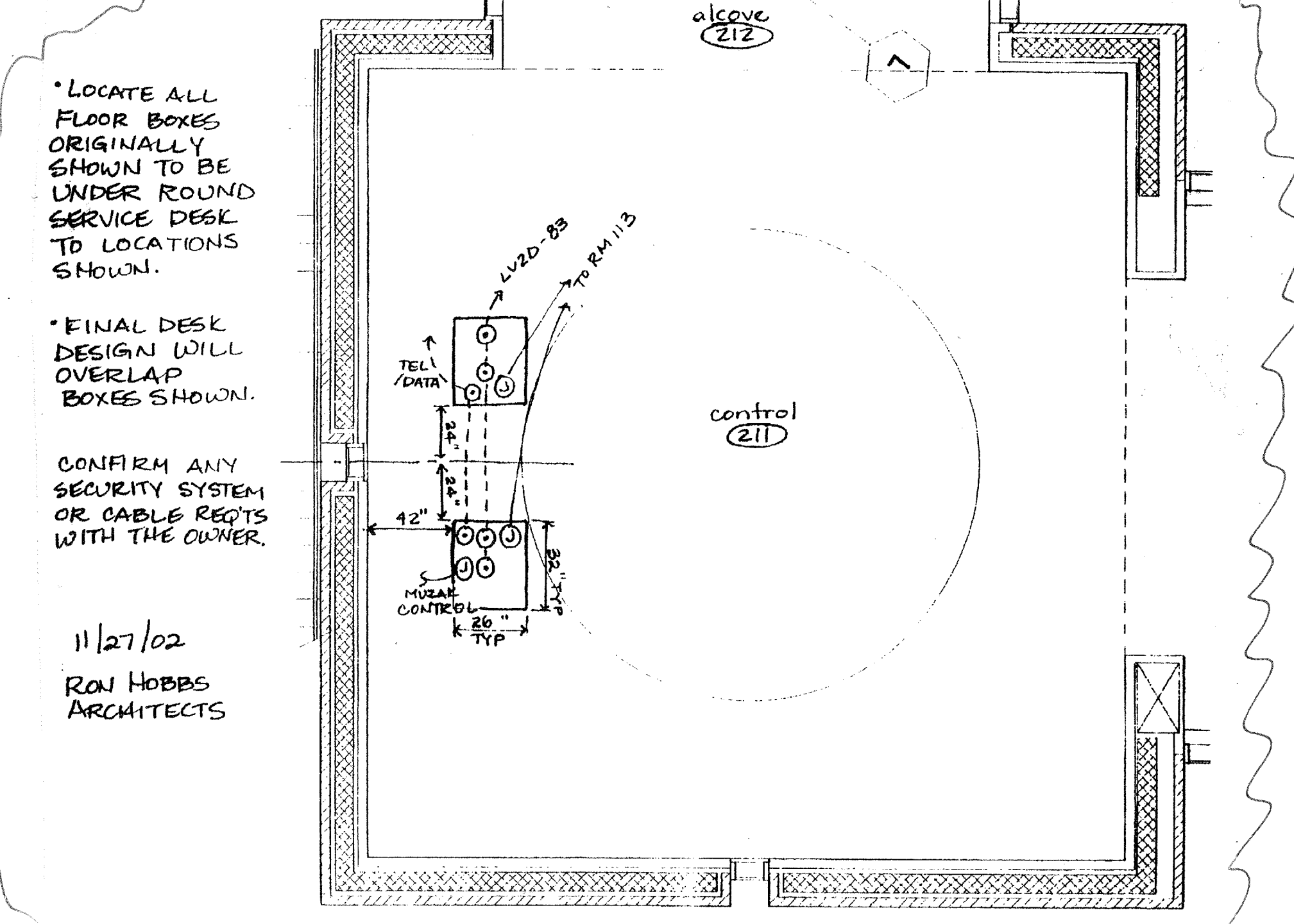


POWERED EXERCISE EQUIPMENT IS ASSUMED TO REQUIRE 20A/1P CIRCUIT EACH. VERIFY PRIOR TO FINAL ROUGH-IN. CONTACT OWNER, ARCHITECT, OR ENGINEER FOR FURTHER DIRECTION IF REQUIRED.

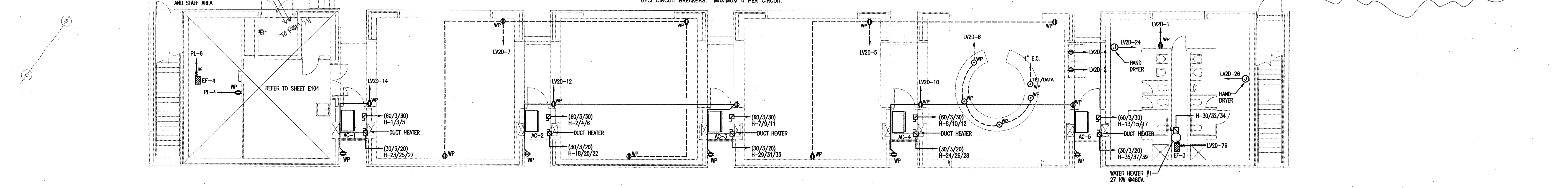
1 upper floor - electrical
SCALE: 1/8" = 1' - 0"



- 1" CONDUIT SHOWN
- LEGEND
- ⊠ SPEAKER, RUN CONDUIT TO MUZAK EQUIPMENT IN EXISTING BUILDING.
 - ⊡ PA SYSTEM, RUN CONDUIT TO STAFF DESK IN EXISTING BUILDING.
 - ⊞ SECURITY CAMERA, RUN CONDUIT TO STAFF DESK IN EXISTING BUILDING.
 - ⊞ BUZZER, RUN CONDUIT AS DESCRIBED ON FLOOR PLAN. INCLUDE HARDWARE TO BE SELECTED BY OWNER/CONSTRUCTION MANAGER.



ALL RECEPTACLES NOTED AS "WP" SHALL BE PROTECTED BY GFCI CIRCUIT BREAKERS. MAXIMUM 4 PER CIRCUIT.



2 lower floor - electrical
SCALE: 1/8" = 1' - 0"