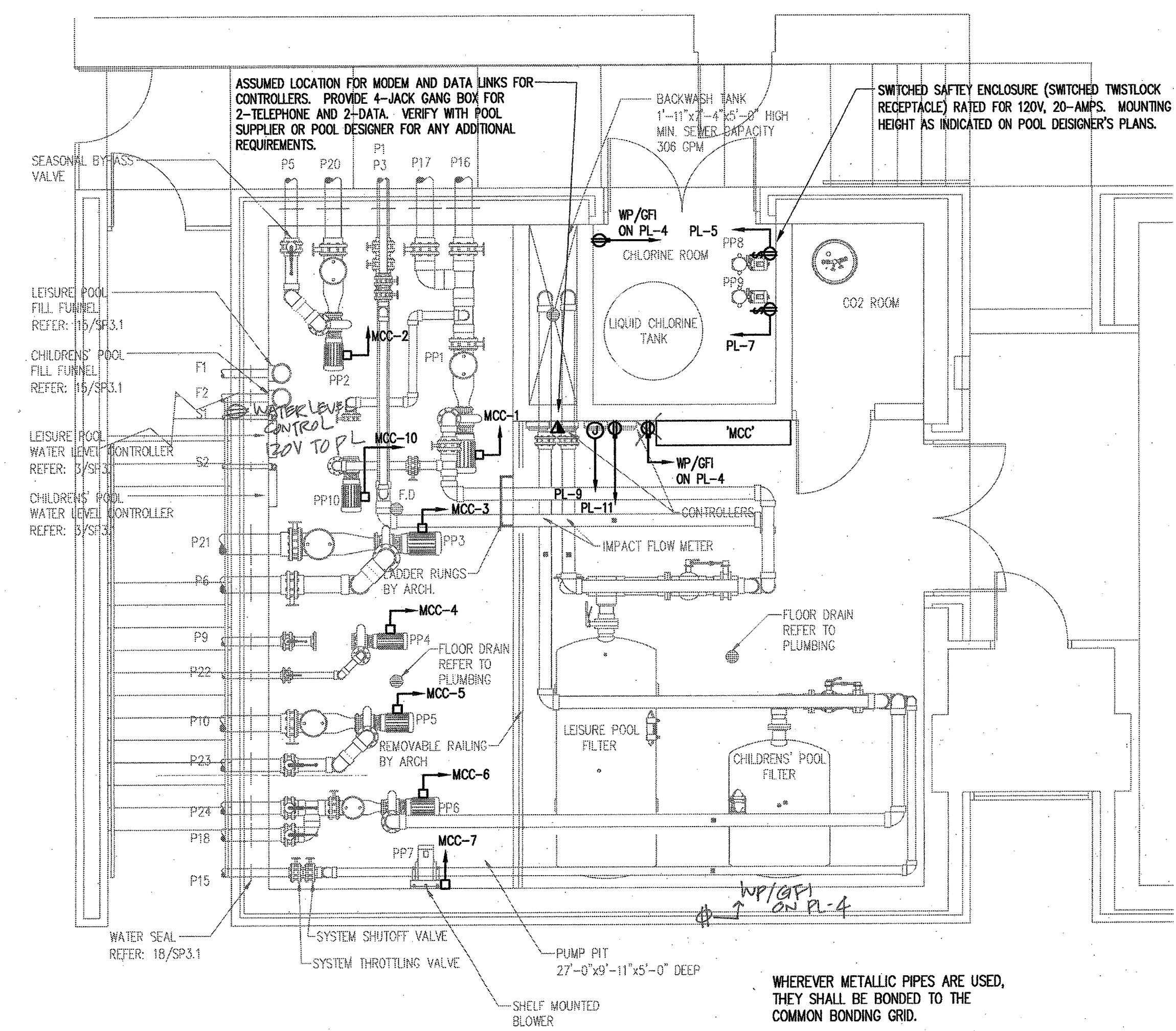


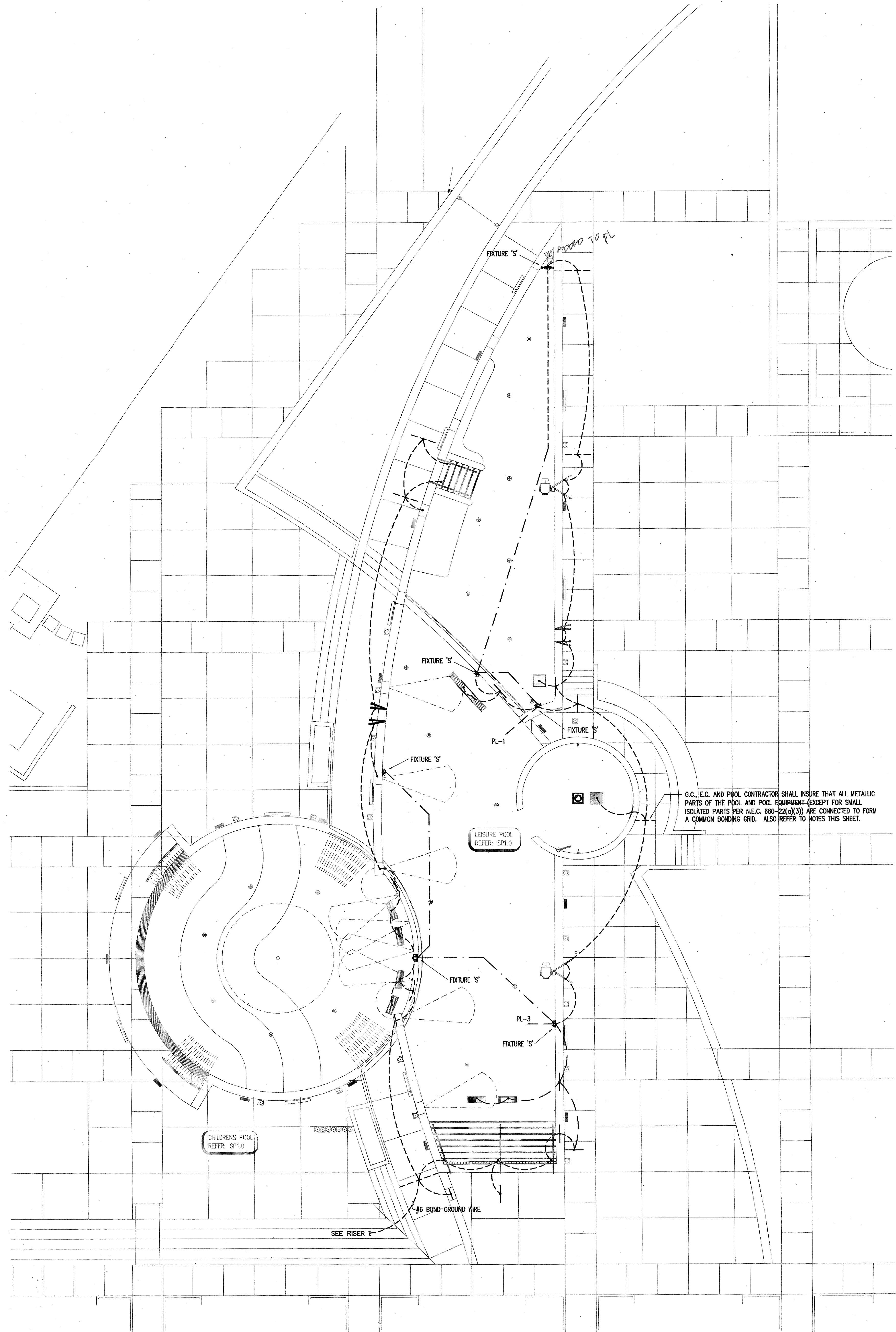
REVISIONS


PUMP SCHEDULE			
ID	DESCRIPTION	SPECIFICATIONS	
		GPM	TDH HP
PP1	LEISURE POOL RECIRCULATION PUMP	790	60 20
PP2	VORTEX PUMP	500	40 10
PP3	WATER FALL PUMP	750	40 15
PP4	LEISURE POOL HYDROTHERAPY PUMP	190	40 3
PP5	WATER FEATURE PUMP	1000	40 15
PP6	CHILDRENS POOL RECIRCULATION PUMP	250	60 7.5
PP7	AIR BLOWER	70 SCFM @ 75" H2O	3
PP8	STENNER CHEMICAL PUMP	-	-
PP9	STENNER CHEMICAL PUMP	-	-
PP10	SEASONAL RECIRCULATION BYPASS PUMP	200	60 5

- NOTES:
1. REMOTE START/STOP FOR LEISURE POOL FEATURE PUMPS LOCATED IN NATATORIUM OFFICE.
  2. PROVIDE RELAYS BETWEEN WATER FEATURE PUMPS AND LIFE GUARD ROOM. PROVIDE RELAY FOR AIR BLOWER IN LIFE GUARD ROOM. VERIFY TYPE OF RELAY(S) REQUIRED BY POOL DESIGNER.
  3. PROVIDE GFCI PROTECTED CIRCUIT AND DUPLEX RECEPTACLE FOR WATER LEVEL CONTROLLER. REFER TO POOL DESIGNER'S DRAWINGS FOR EXACT LOCATIONS (TYPICAL OF TWO).
  4. PROVIDE DEDICATED CIRCUIT FOR CHEMICAL CONTROL UNIT. REFER TO POOL DESIGNER'S DRAWINGS FOR EXACT LOCATIONS (TYPICAL OF TWO).
  5. PH BALANCE ROOM: PROVIDE ROUGH-IN CONDUIT AND J-BOX(ES) WITH PULL CORD FOR FUTURE PUMPS. REFER TO POOL DESIGNER'S DRAWINGS FOR FUTURE PUMP LOCATIONS.
  6. THE CHEMICAL CONTROLLER UNIT(S) WILL HAVE MODEM CAPABILITIES. COORDINATE PHONE LINE(S) WITH OWNER.
  7. PROVIDE ALLOWANCE FOR 6 GFCI OUTLETS FOR VACUUM CLEANER. LOCATIONS OF OUTLETS SHALL BE COORDINATED WITH OWNER AND POOL DESIGNER. LOCATIONS SHALL COMPLY WITH N.E.C. 680-5, 680-6.
  8. E.C. SHALL OBTAIN FROM POOL DESIGNER A COMPLETE LIST OF EQUIPMENT NOTING HP/FLA VOLTAGE REQUIREMENTS. LIST SHALL INCLUDE ALL PERTINENT ITEMS REQUIRING ELECTRICAL CONNECTION OR ROUGH-IN TO PROVIDE A COMPLETE AND FULLY FUNCTIONAL SYSTEM.
    - A. ALL METAL PARTS AND EQUIPMENT ASSOCIATED WITH THE POOLS AND AQUEDUCT ARE TO BE BONDED TOGETHER AS REQUIRED BY ARTICLE 680-22 OF THE N.E.C.
    - B. BOND POOLS TOGETHER BY REINFORCING BAR GRIDS AND #6 COPPER.
    - C. PROVIDE GFCI PROTECTION FOR ALL POOL LIGHTING AND POOL EQUIPMENT CIRCUITS AND FOR ANY GENERAL RECEPTACLES WITHIN 20 FT. OF POOL OR AQUEDUCT WALLS.
    - D. LIGHT FIXTURES SHALL BE LOCATED 18" BELOW WATER LEVEL, OR SHALL BE LISTED FOR HIGHER LOCATIONS.
    - E. CONDUIT TO WET-NICHE FIXTURES SHALL BE BRASS OR CORROSION RESISTANT MATERIAL. NON-METALLIC CONDUIT SHALL INCLUDE #8 INSULATED GROUND WIRE.
    - F. WIRING METHODS SHALL BE LISTED FOR SPECIFIC USE AND APPROVED BY LOCAL AUTHORITIES.
    - G. GFCI - PROTECTED CONDUCTORS SHALL NOT SHARE CONDUIT WITH NON-GFCI PROTECTED CONDUCTORS.



**1 FILTER ROOM LAYOUT**  
 SCALE: 1/4" = 1' - 0"

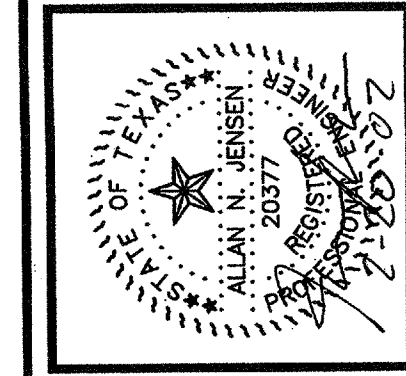


**2 POOL GROUNDING GRID**  
 SCALE: 1/8" = 1' - 0"

**ADDISON ATHLETIC CLUB EXPANSION AND LEISURE POOL**  
 ADDISON, TEXAS

**RON HOBBS ARCHITECTS**  
 614 W. MAIN ST., SUITE #100 GAVLAND, TEXAS 75040  
 (972) 494-0174

H&A Associates, Inc.  
 ENGINEERS - ARCHITECTS - SURVEYORS  
 8810 BALDWIN BLVD., SUITE 200  
 DALLAS, TEXAS 75243  
 (214) 348-8800  
 FAX: (214) 348-8801



JOB NUMBER  
**0012**

SHEET NAME  
**ELECTRICAL POOL PLAN**  
 SHEET NUMBER  
**E104**