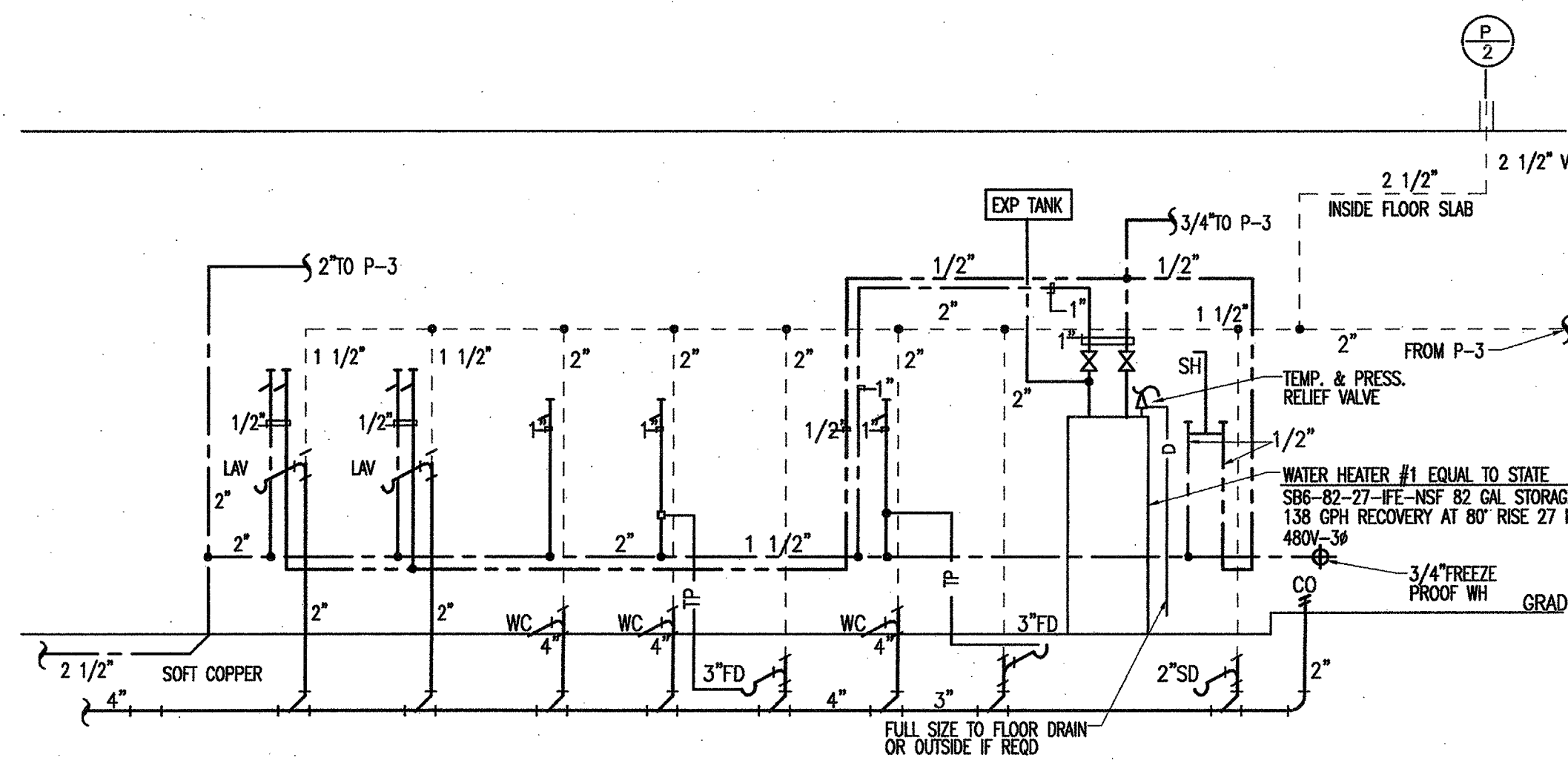
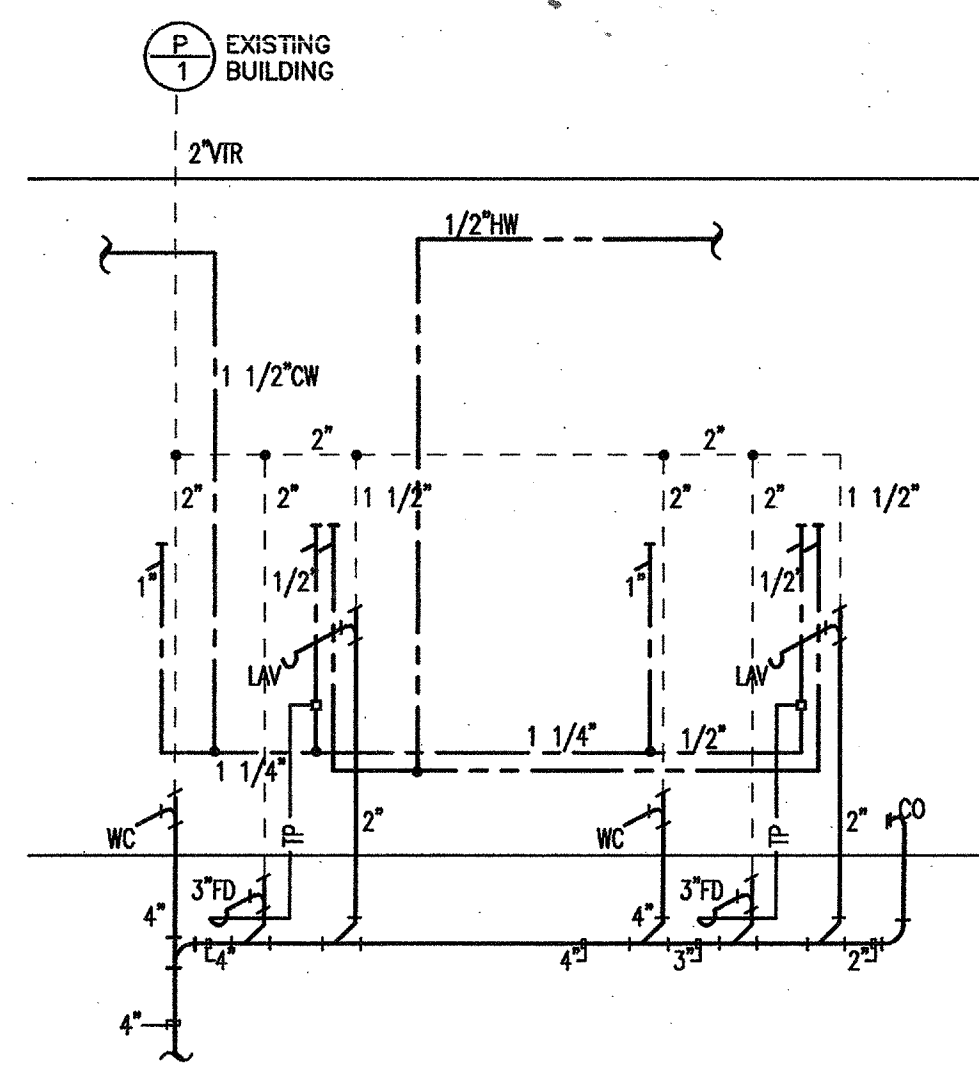
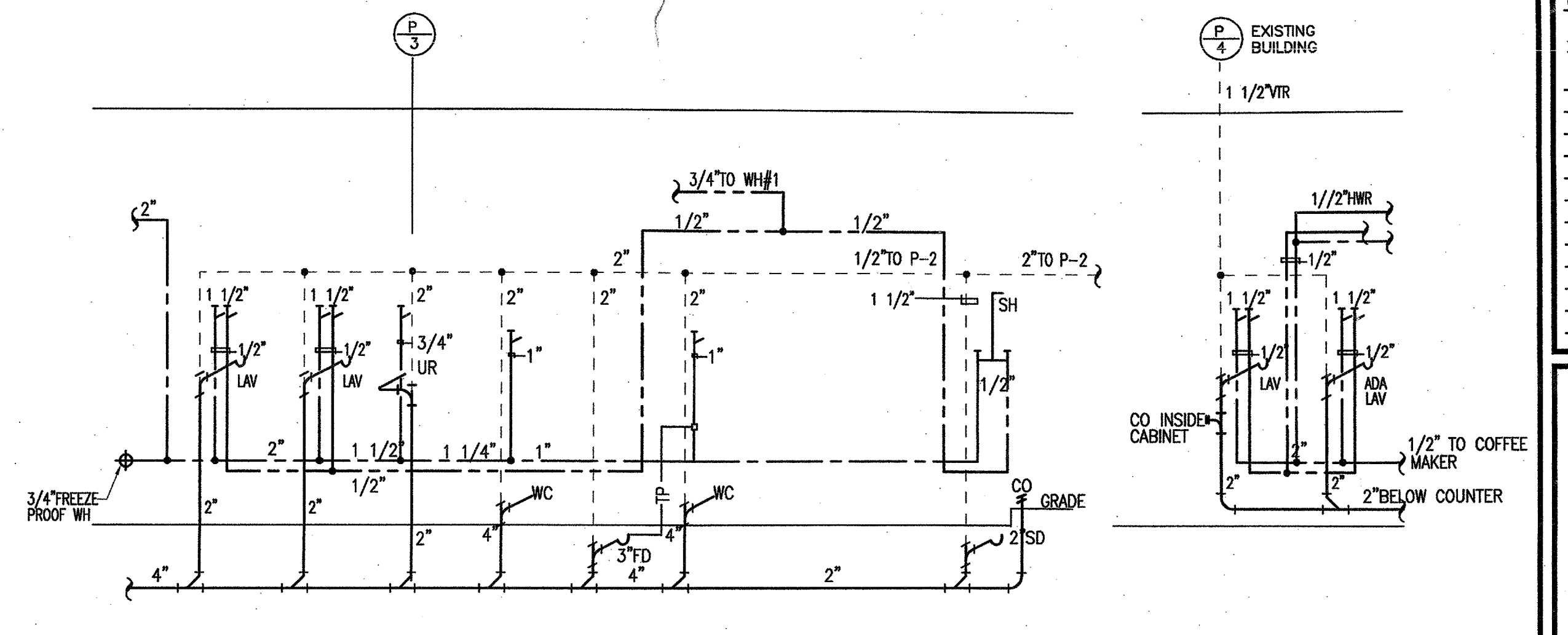


4 water heater #2 diagram
none



3 plumbing riser diagrams
none



PLUMBING SYMBOLS LEGEND

S OR W	SANITARY OR WASTE PIPING ABOVE SLAB
S OR W	SANITARY OR WASTE PIPING BELOW SLAB
SV	SANITARY VENT PIPING
G	GAS PIPING
CW	COLD WATER PIPING
HW	HOT WATER PIPING
HWR	HOT WATER RETURN
SD	STORM DRAIN
DS	DOWNSPOUT
RD	ROOF DRAIN
CV	BALL VALVE
OV	GATE VALVE
CV	CHECK VALVE
RV	RELIEF VALVE
HB	HOSE BIBB
SA	SHOCK ABSORBER
ST	STRAINER
CO	WALL CLEANOUT
FCD	FLOOR CLEANOUT
FS	FLOOR SINK
FD	FLOOR DRAIN
FFD	FUNNEL DRAIN
WM	WATER METER
	CONNECT TO EXISTING

PLUMBING FIXTURES

Water Closet A:
1. Fixture: American Standard "Avalanche" No. 2257-103, wall hung with carrier, 1.6 GPF, siphon jet, white vitreous china. Cartridge No. 500cc white solid plastic seat, open front without cover, and stainless steel check spring.
a. Fittings: Sloan Royal No. 111 exposed flush valve (1.6 GPF), with vacuum breaker, and stop, bolts, nuts, washers and caps.

Water Closet B (Handicap):
1. Fixture: Same as WC-A except mounted 17" high to top of seat.
a. Fittings: Same as for WC-A. Install valve handle on wide side of seat.

Lavatory - Wall Hung:
1. Fixture: American Standard No. Q321.075 (4" centers), 19x17 Deco, white vitreous china, wall hung, with concealed arms and carrier.
a. Fittings: No. 5402.142H chrome-plated faucet (1.5 GPM) with metal lever handles, perforated drain, chrome-plated 3/8"x1/2" supplies with stops, risers, and escutcheons, adjustable cast brass, chrome-plated 1-1/4" P-trap with cleanout. Insulate exposed hot water piping and drain piping under the lavatory. Use insulation kit equal to Randi Lav-Guard by Trueton.

Urinal:
1. Fixture: American Standard No. 6541.132 Allbrook wall hung with carrier, 1.0 gpf, white vitreous china, siphon jet type, with flushing rim, top spud and 2" threaded inside connection mounted 17" high to rim.
a. Fittings: Sloan Royal No. 186-1 flush valve (1.0 gallon per flush), with stop, vacuum breaker, flush connection.

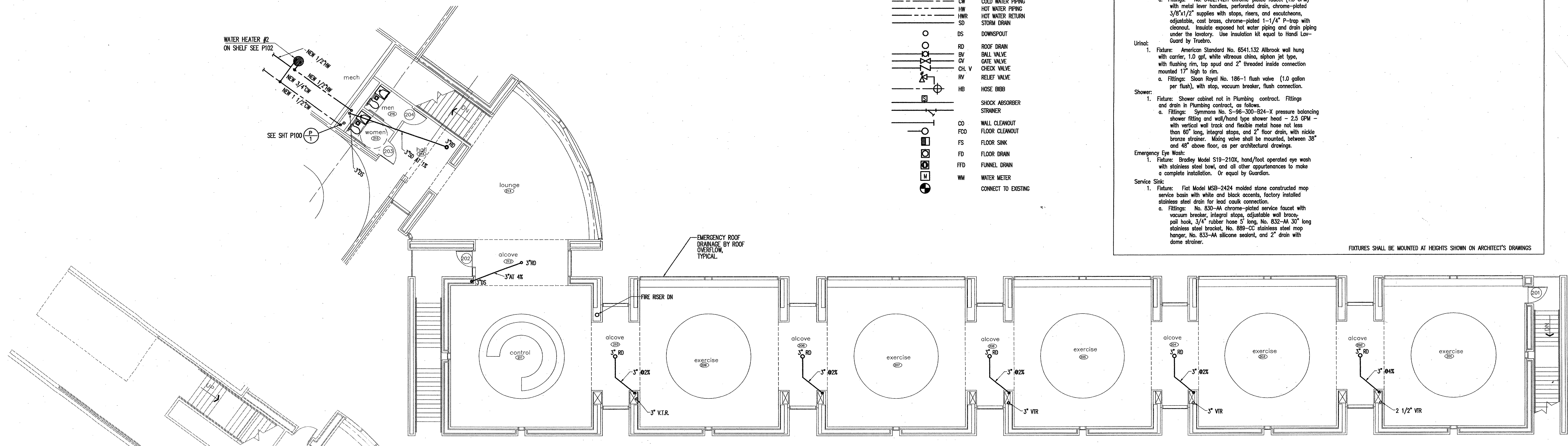
Shower:
1. Fixture: Shower cabinet not in Plumbing contract. Fittings and drain in Plumbing contract, as follows:
a. Fittings: Symons No. S-96-300-824-X pressure balancing shower fitting and wall/hand type shower head - 2.5 GPM - with vertical wall track and flexible metal hose not less than 60" long, integral stops, and 2" floor drain, with nickel bronze strainer. Mixing valve shall be mounted, between 38" and 48" above floor, as per architectural drawings.

Emergency Eye Wash:
1. Fixture: Bradley Model S19-210X, hand/foot operated eye wash with stainless steel bowl, and all other appurtenances to make a complete installation. Or equal by Guardian.

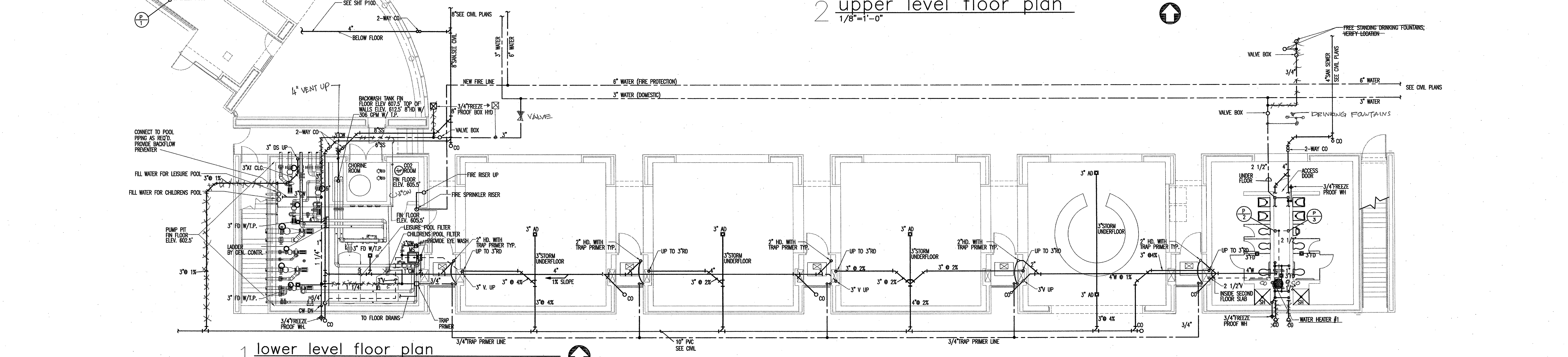
Service Sink:
1. Fixture: Fiat Model MSB-2424 molded stone constructed mop service basin with white and black accents, factory installed stainless steel drain for lead caulk connection.
a. Fittings: No. 830-AA chrome-plated service faucet with vacuum breaker, integral stops, adjustable wall bracket, pull hook, 3/4" rubber hose 5' long, No. 832-AA 30" long stainless steel bracket, No. 889-CC stainless steel mop hanger, No. 833-AA silicone sealant, and 2" drain with dome strainer.

Sink in Multipurpose Room:
1. Fixture: Elkay No. LB40-2521-60, self-rimming, 18 ounce type 302 stainless steel, with 21"x15"-3/4"x6" bowl, T&S approved.
a. Fittings: No. 2442 aerated swing-spout faucet with blade handles, No. LX-18 perforated drain with 1-1/2" tailpiece, chrome-plated 1-1/2" P-trap with cleanout, 3/8" angle stops.
Two required, see architectural for elevations.
Outdoor Drinking Fountain (shall meet T&S requirements).
1. Issue Model 3380, free standing, stainless steel fountain, with push button controls.
Two required, one at standard, one at T&S height, 38" to spout. Drain both to gravel pit, of volume 2 to 3 cubic feet.

FIXTURES SHALL BE MOUNTED AT HEIGHTS SHOWN ON ARCHITECT'S DRAWINGS



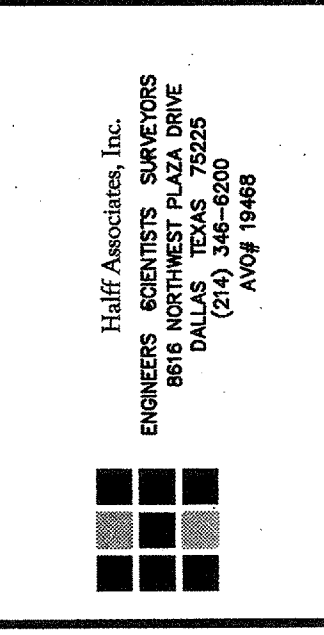
2 upper level floor plan
1/8"=1'-0"



1 lower level floor plan
1/8"=1'-0"

ADDISON ATHLETIC CLUB EXPANSION
AND
LEISURE POOL
ADDISON, TEXAS

RON HOBBS ARCHITECTS
614 W. MAIN ST. SUITE #200 GARLAND, TEXAS 75040
(972) 994-0774



JOB NO.
001

SHEET NAME
PLUMBING PLAN
SHEET NUMBER
P101