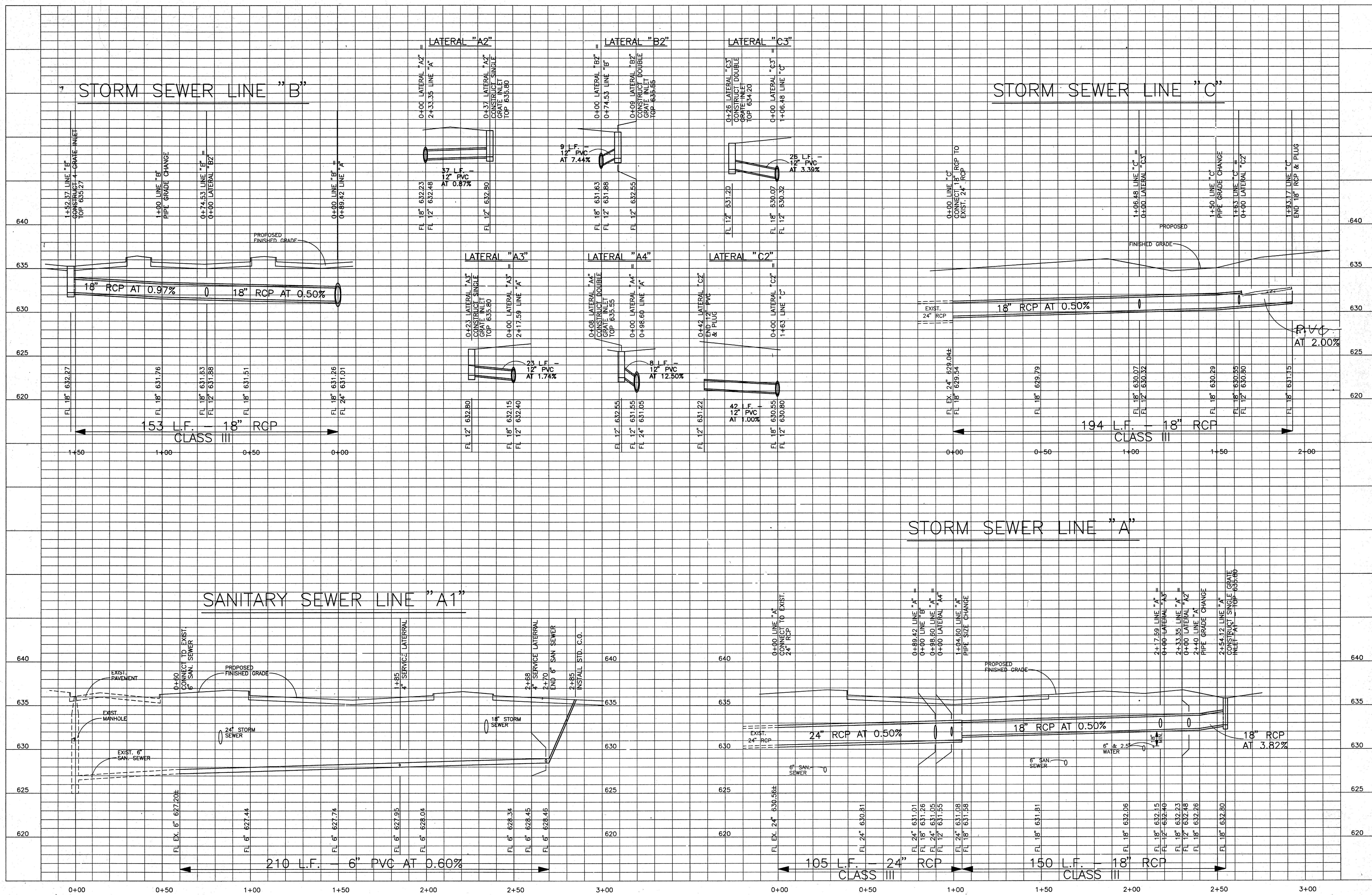
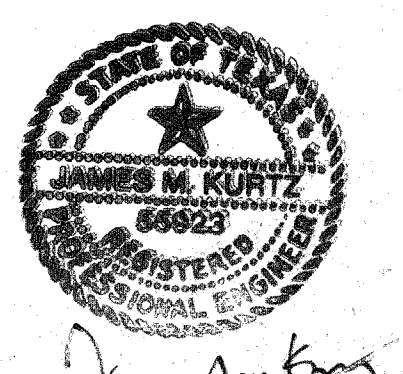


NOTE: EMBEDMENT FOR STORM AND SANITARY SEWERS SHALL CONSIST OF 6" CRUSHED STONE BASE WITH SELECT MATERIAL BACKFILL TO A MINIMUM OF 12" ABOVE THE PIPE



SCALE : 1" = 20' HORIZ. / 1" = 4' VERT.



James M. Kurtz
8.15.90

ACC ACT

OWNER Town of Addison	LANDSCAPE The Kellams Group 214-387-8393	STRUCTURAL Elisor Tanner 214-691-7822	HISTORIAN Alan Mason 214-691-7822	Issue	Category	Subcategory	Sheet
ARCHITECT Cunningham Architects 2700 Fairmount Dallas, Texas 75201 214-855-5272	THEATRE CONSULTANT Theatre Projects 203-431-3949	M.E.P. MEP Systems 214-754-4741	LIGHTING Pamela Hull Wilson 214-823-6542	ISSUE FOR BID 8-17-90	2	4	3
INTERIORS CRSS 79-552-2000	CIVIL Kurtz & Associates 214-690-3322	GRAPHICS Nottingham Design 214-954-1978					

Storm Profiles