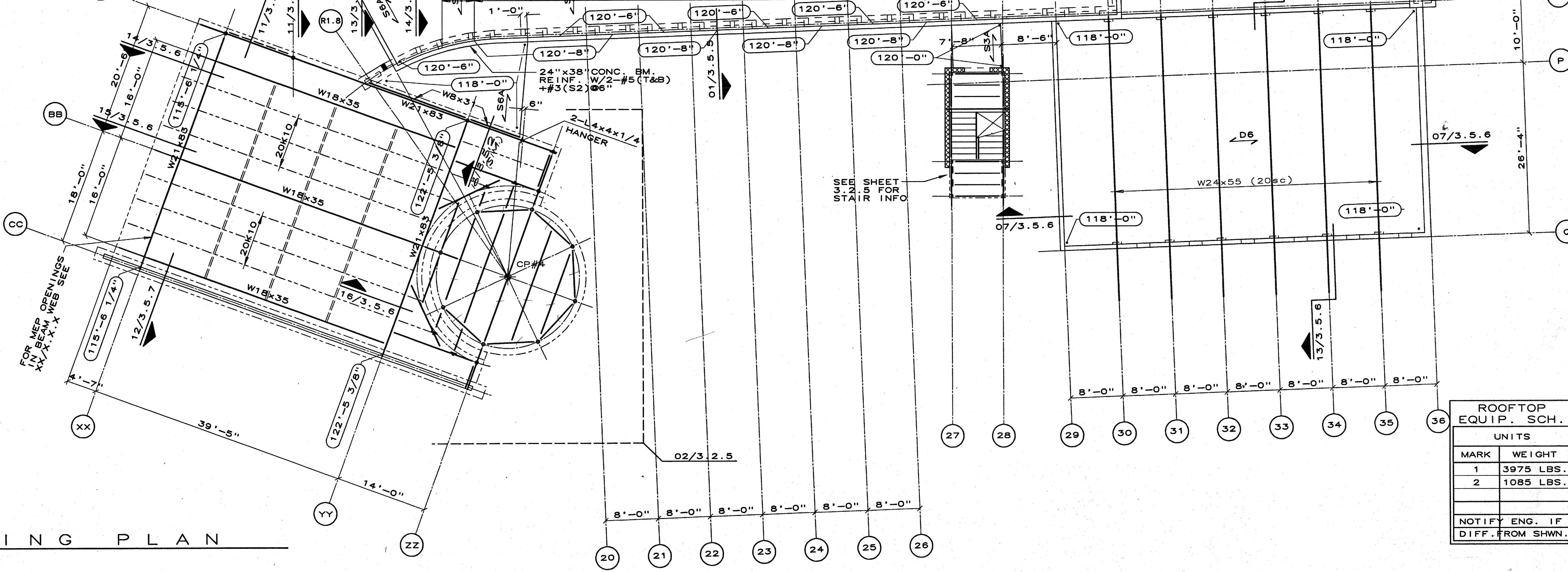


02 PARTIAL FRMG. PLAN  
SCALE: 1/4"=1'-0"

- PLAN NOTES:
1. FINISH FLOOR ELEVATION = 120'-6" (U.N.O.).
  2. (120'-6 1/2") INDICATES TOP OF STEEL/  
BOTTOM OF DECK ELEVATION.
  3. SEE SHEET "3.1.1" FOR GENERAL NOTES.
  4. SEE SHEET "3.5.1" FOR TYPICAL DETAILS.
  5. D1 INDICATES 1 1/2"-20 GAGE "TYPE B"  
METAL ROOF DECK.
  6. D3 INDICATES 3" THICK NORMAL WEIGHT  
CONCRETE SLAB OVER 6"-28 GAGE METAL  
FORM DECK REINFORCED 6x6-W1.4xW1.4 W.W.F.  
D5 INDICATES 3 1/2" NORMAL WEIGHT CONC  
SLAB REINFORCED WITH 5x8-W2.9xW2.9 OVER  
2"-20 GAGE COMPOSITE METAL DECK.
  6. D6 INDICATES 3" (MIN.) 7/8" (MAX.) NORMAL  
WEIGHT CONCRETE SLAB REINFORCED WITH #3  
AT 12" EA. WAY AT MID-DEPTH OVER 2"-18  
GAGE COMPOSITE METAL DECK.
  7. (SC) INDICATES NUMBER OF SHEAR CONNECT-  
REQUIRED. SCHEDULED SHEAR SHALL BE EVENLY  
SPACED BETWEEN SUPPORTS. SHEAR CONNECTOR  
(SC) USED IN CONSTRUCTION SHALL BE 3/4"  
X0'-4" HEADED STUDS (AFTER INSTALLATION)  
U.N.O.
  7. JOIST SPACING AT FLOOR DECK (D2) SHALL  
BE 2'-6" (MAX.) AND SPACING AT ROOF  
DECK (D1) SHALL BE 4'-0" (MAX.).  
LOCATE A JOIST ON COLUMN CENTERLINE,  
JOISTS TO BE EQUALLY SPACED BETWEEN  
COLUMN CENTERLINES.
  8. BRIDGING PER STEEL JOIST INSTITUTE  
SPECIFICATIONS.
  9. "JX" INDICATES "SPECIAL JOIST DESIGN"  
SEE SHEET "3.3.1" FOR SCHEDULE.
  10. SEE TYPICAL DETAIL "03"/3.5.1 FOR CMU  
WALLS - TYPE "W1" U.N.O.
  11. JOISTS NOT NOTED OTHERWISE TO BE 2.5VS1.
  12. "X" INDICATES "X" BRACING. BRACING  
SHALL BE 3/4" DIA. W/TURNBUCKLE U.N.O.

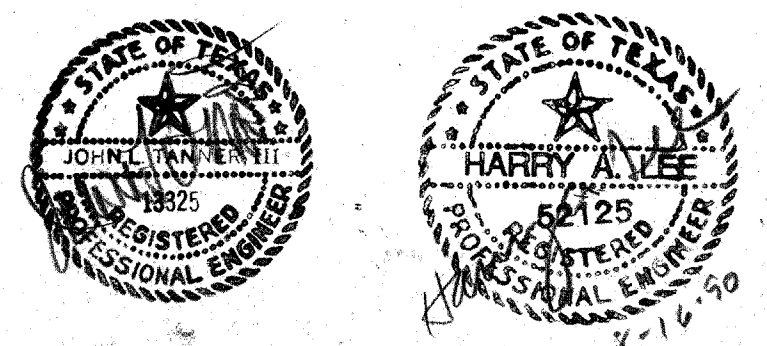
01 LEVEL 3 FRAMING PLAN  
SCALE: 1/8"=1'-0"



ROOFTOP EQUIP. SCH.

UNITS	
MARK	WEIGHT
1	3975 LBS.
2	1085 LBS.

NOTIFY ENG. IF  
DIFF. FROM SHWN.



ACC ADDISON ACT

OWNER	LANDSCAPE	STRUCTURAL	HISTORIAN	Issue	Category	Subcategory	Sheet
Town of Addison The Kallens Group 30776-417	THEATRE CONSULTANT 2700 Fairmount Dallas, Texas 75201 214-855-5272	M.E.P. MEP Systems 214-754-4701	Alan Mason 214-691-7182	ISSUE FOR BID 8-17-90	3	2	6
ARCHITECT Cunningham Architects 2700 Fairmount Dallas, Texas 75201 214-855-5272	INTERIORS CSSS 735-52-2000	CIVIL Kurtz & Associates 214-690-3322	LIGHTING Pamela Hull Wilson 214-823-6542	GRAPHICS Northward Design 214-854-9176			