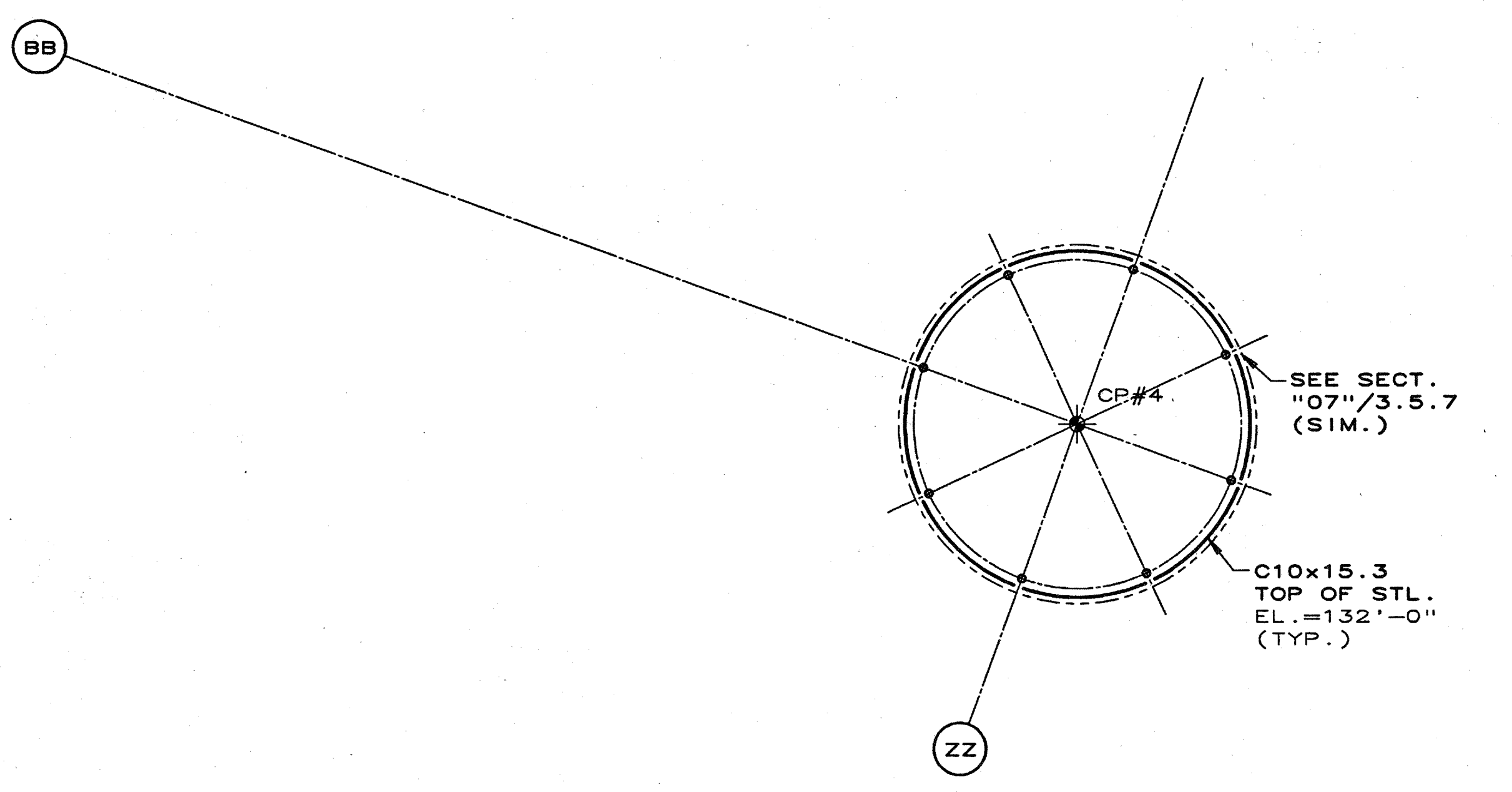
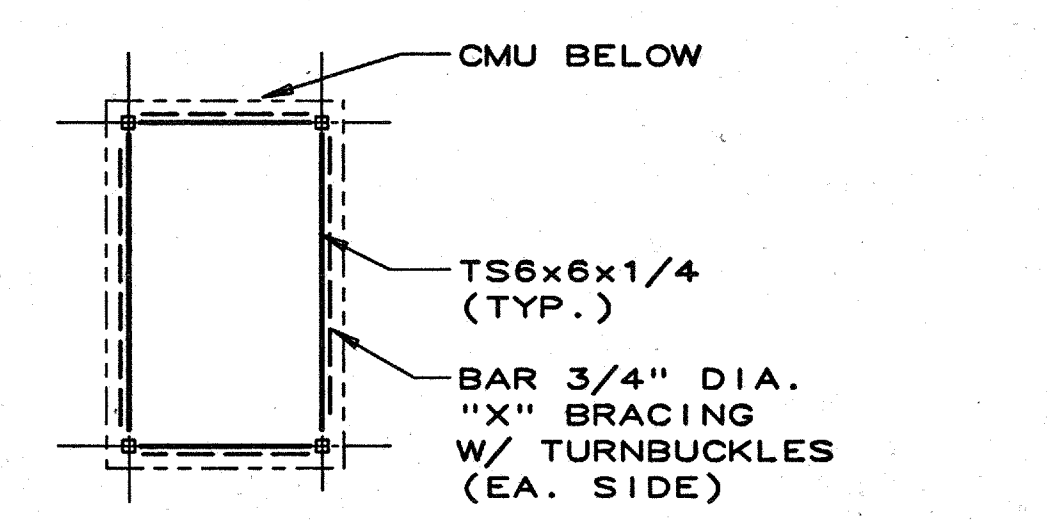
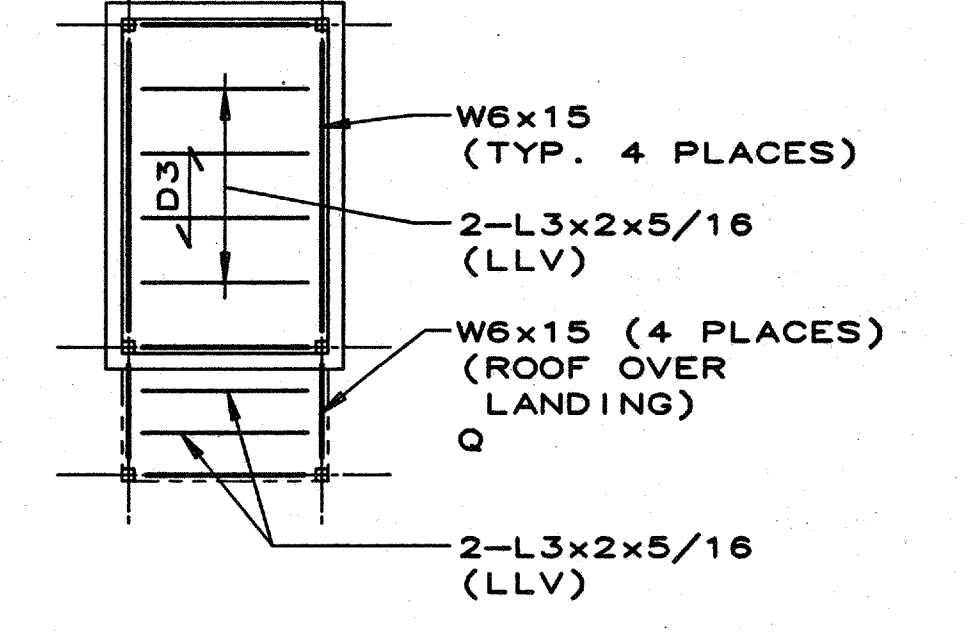


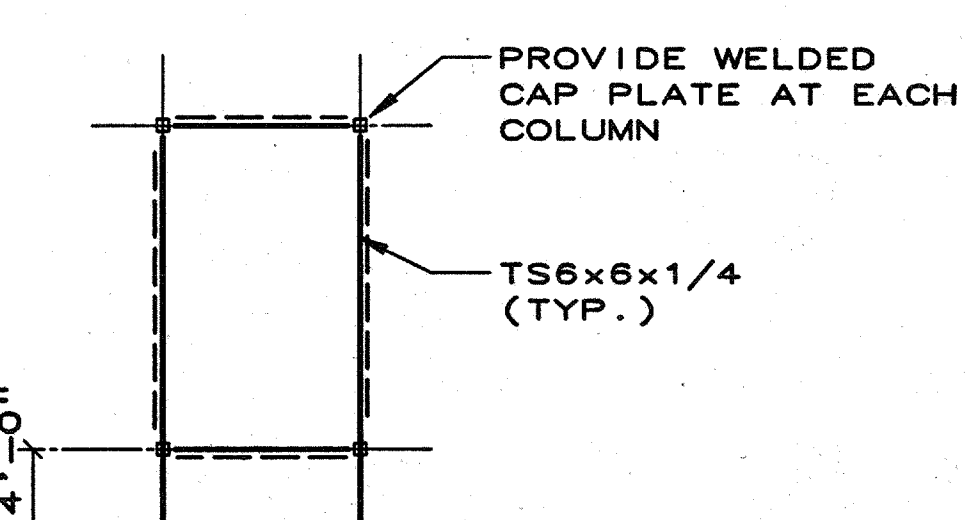
- PLAN NOTES:**
1. (112'-0") INDICATES TOP OF STEEL/ BOTTOM OF DECK ELEVATION.
 2. SEE SHEET "3.1.1" FOR GENERAL NOTES.
 3. SEE SHEET "3.5.1" FOR TYPICAL CMU WALL CONSTRUCTION.
 4. SEE SHEET "3.5.2" FOR TYPICAL STEEL SECTIONS AND DETAILS.
 5. D1 INDICATES 1.1/2"-20 GAGE "TYPE B" METAL ROOF DECK.
 6. Q D6 INDICATES 8" CONCRETE SLAB REINFORCED #4 AT 12" (TOP AND BOT.) + #4 AT 18" (TEMP.)
 7. STEEL ROOF JOISTS SPACING SHALL BE 4'-0"cc (MAX.) U.N.O..
 8. HORIZONTAL BRIDGING PER STEEL JOIST INSTITUTE SPECIFICATIONS.
 9. Z - INDICATES LOCATION OF LIFTING LUG. SEE DETAIL 07/3.3.1.
 10. X INDICATES 4000 LBS. HOIST LOAD (NOT CONCURRENT WITH CATWALK) OR CATWALK TROLLEY REACTION.
 11. TRUSSES "1101" ARE DESIGNED FOR A MAXIMUM HANGING LOAD OF 5000 LBS., DIVIDED BETWEEN CONCENTRATED LOADS HUNG FROM LIFTING LUGS AND UNIFORM LOADS ATTACHED TO PIPE.
 12. CATWALK IS DESIGNED FOR 100 PSF LIVE LOAD OR A MAXIMUM 100 POUNDS PER LINEAL FOOT LOAD DUE TO LIGHTING AND EQUIPMENT.
 13. * INDICATES A572 GRADE 50 STEEL.



NOTE:
TRUSSES ARE UNSTABLE UNTIL CONCRETE ROOF SLAB IS IN PLACE AND HAS ACHIEVED 28 DAY STRENGTH.



TOP OF STEEL EL. = 132'-6"
LEVEL ABOVE ROOF

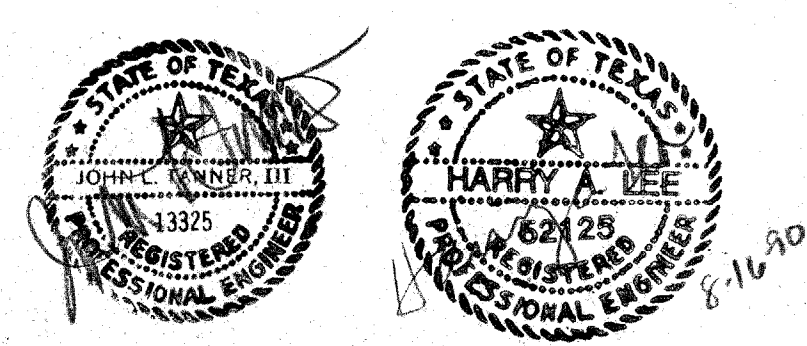


TOP OF STEEL EL. = 146'-4"
OBSERVATION DECK

01 ROOF FRAMING PLAN
SCALE: 1/8"=1'-0"

02 STAIR PLAN
SCALE: 1/8"=1'-0"

03 STAIR PLAN
SCALE: 1/8"=1'-0"



ACC ADDISON ACT

OWNER	LANDSCAPE	STRUCTURAL	HISTORIAN	Issue	Category	Subcategory	Sheet
Town of Addison The Killens Group 31776-1417	THEATRE CONSULTANT Camelback Architects 2700 Fairmount Dallas, Texas 75201 214-855-5272	M.E.P. MEP Systems 214-754-4741	Alain Mason 214-691-7182	ISSUE FOR BID 8-17-90	3	2	7
INTERIORS CRSS 713-552-2000	CIVIL Kurtz & Associates 214-690-3322	LIGHTING Pamela Hull Wilson 214-823-8542	GRAPHICS Nottingham Design 214-954-1978				