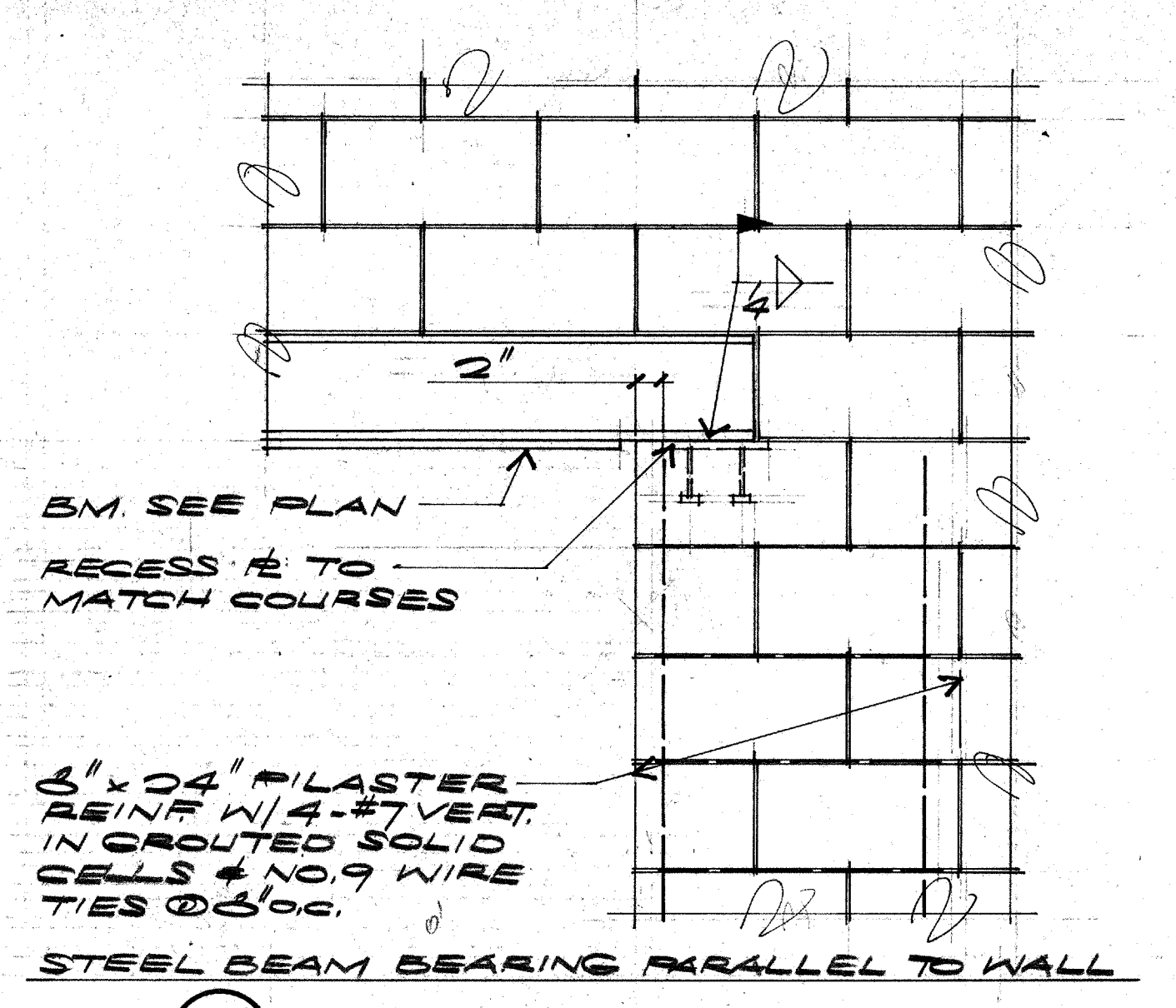
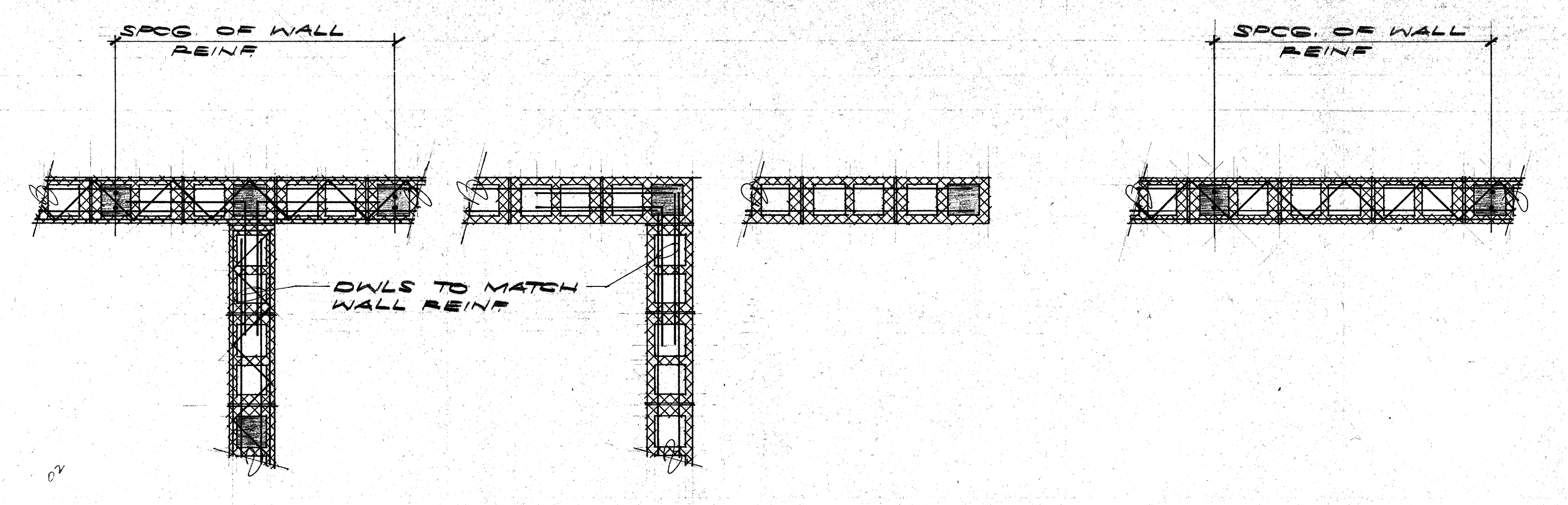


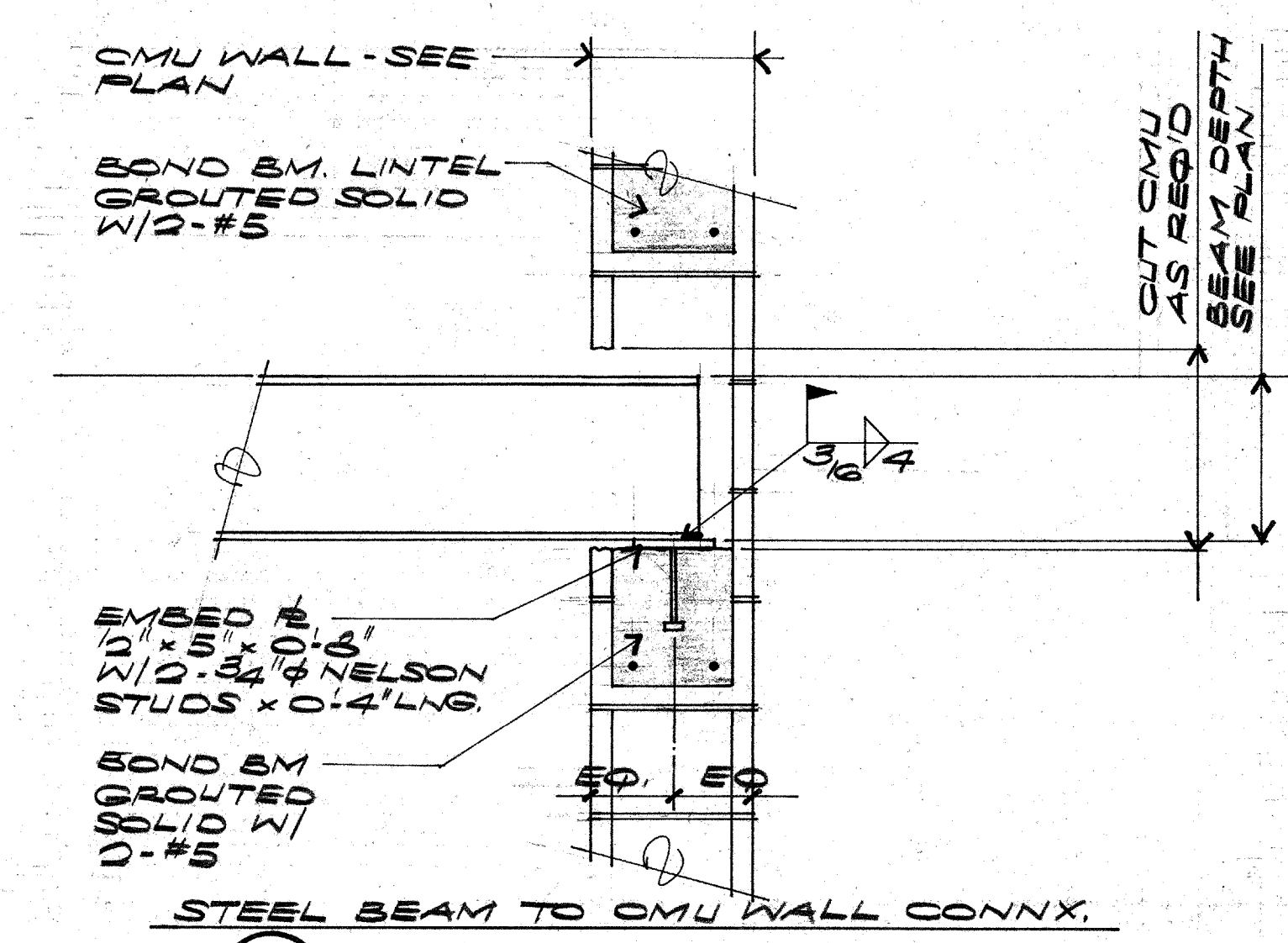
WALL "W1" WALL "W2"  
WALL REINFORCEMENT  
03 TYPICAL DETAIL



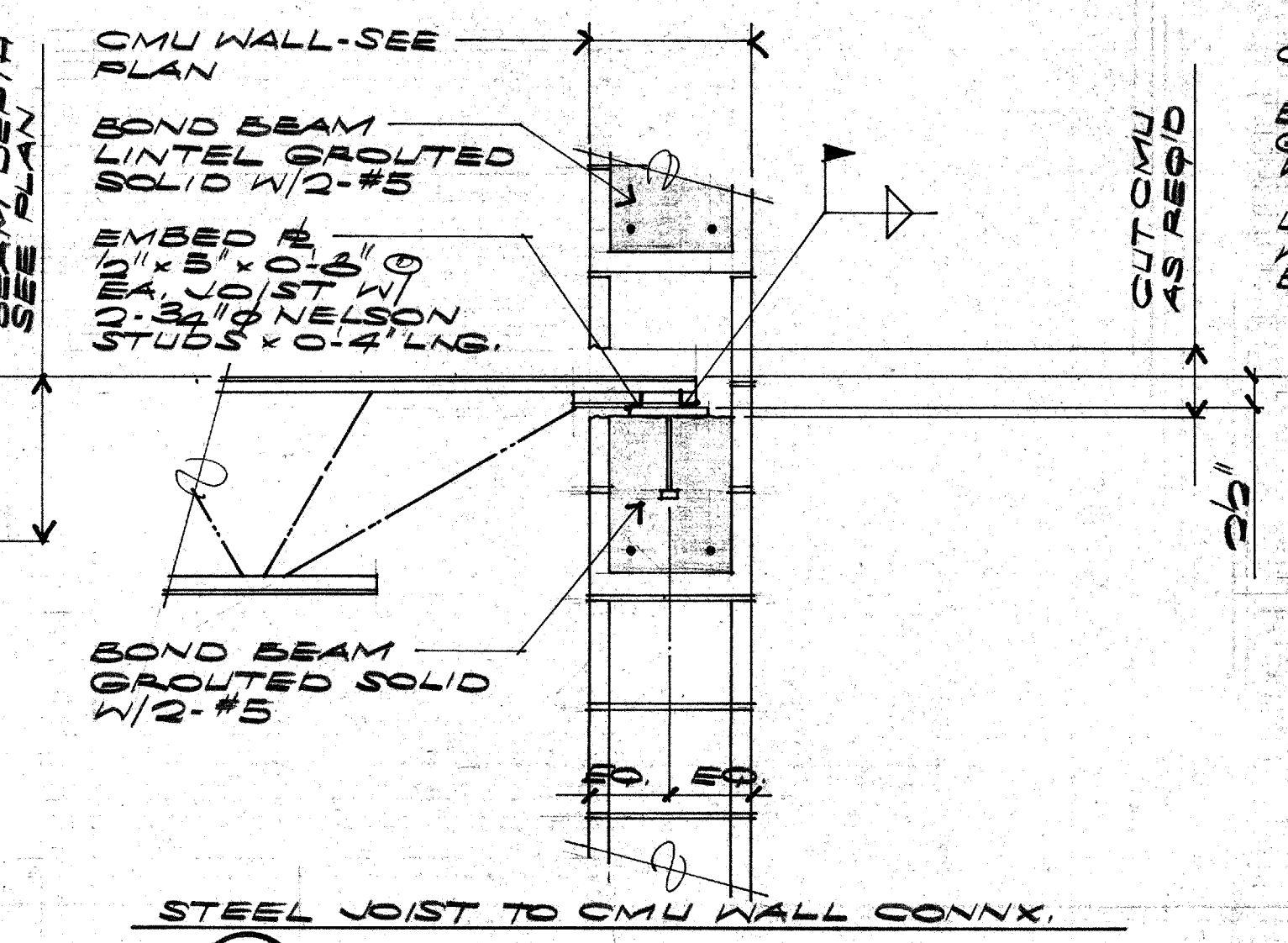
01 TYPICAL DETAIL



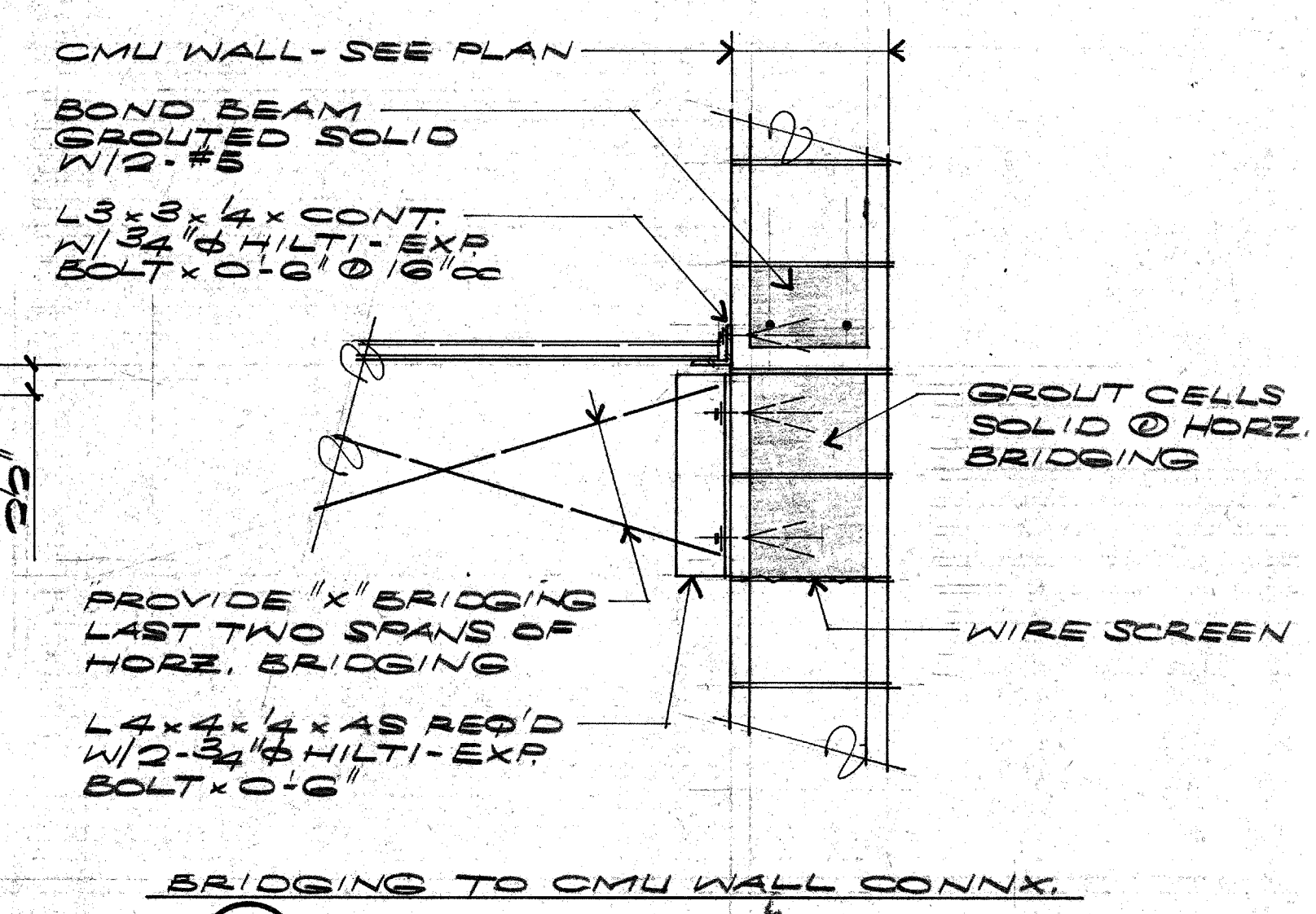
02 TYPICAL DETAIL



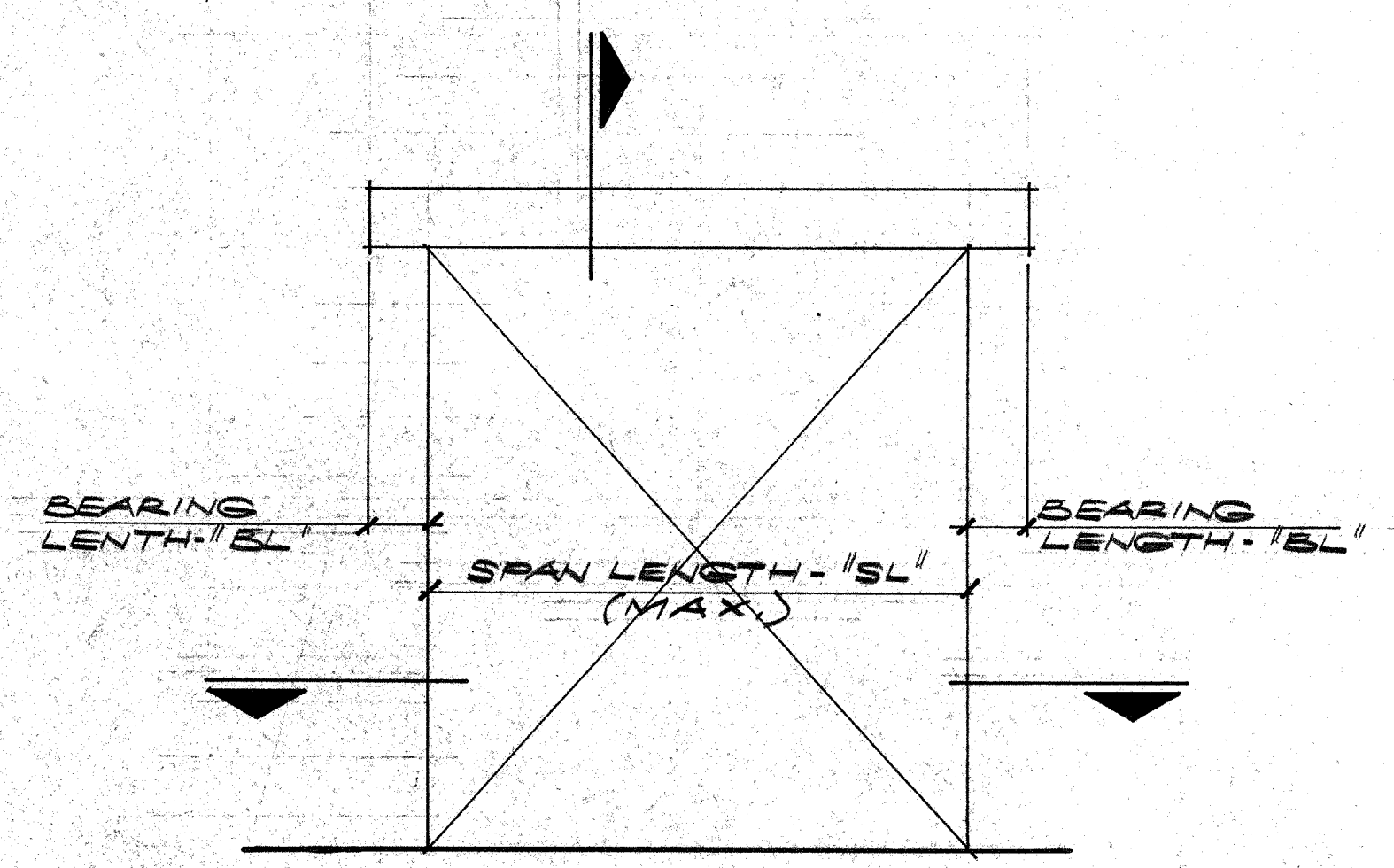
STEEL BEAM TO CMU WALL CONNX.  
04 TYPICAL DETAIL



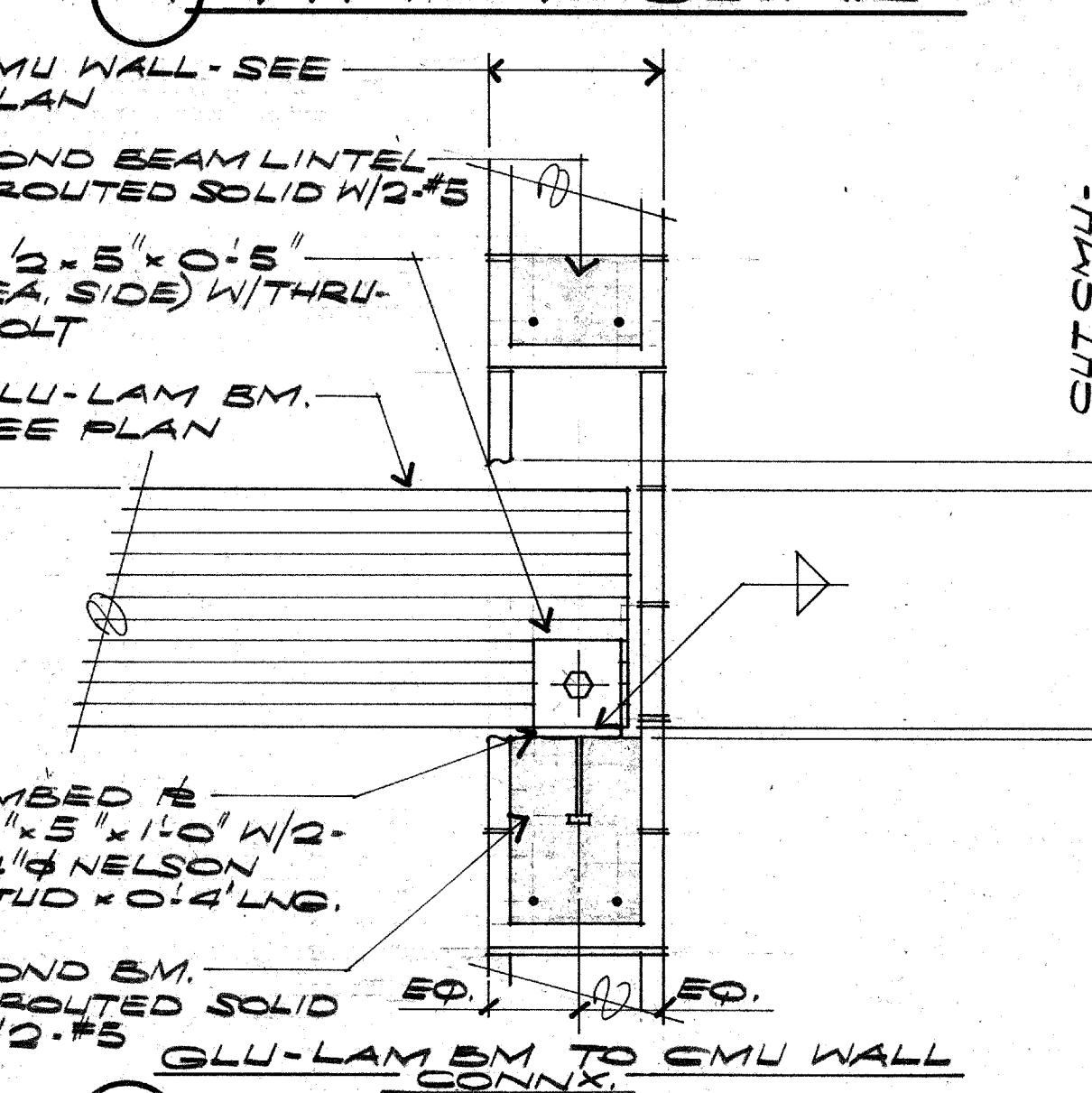
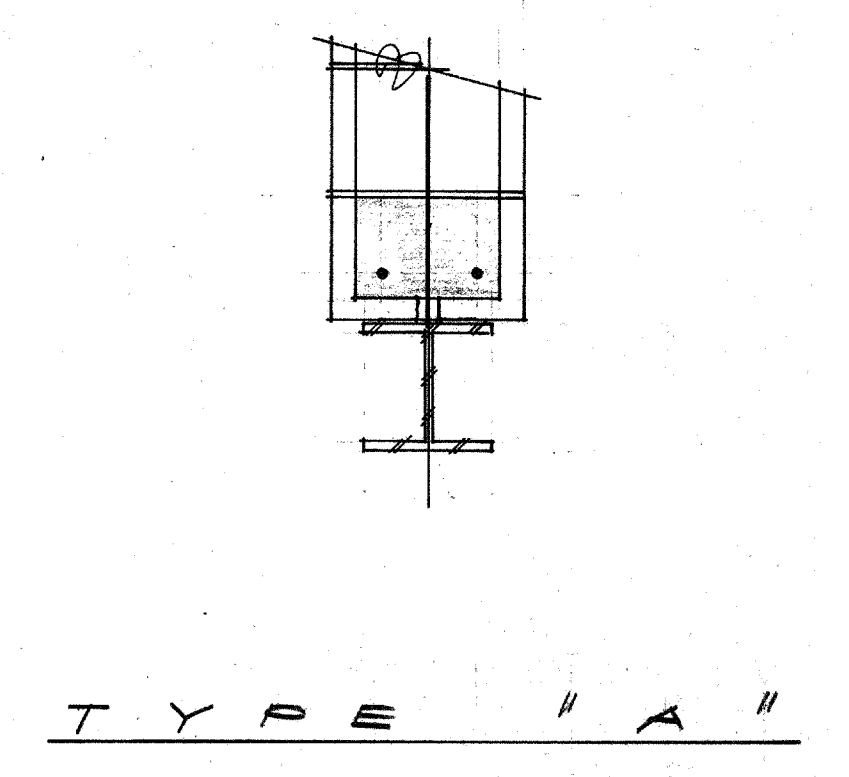
STEEL JOIST TO CMU WALL CONNX.  
05 TYPICAL DETAIL



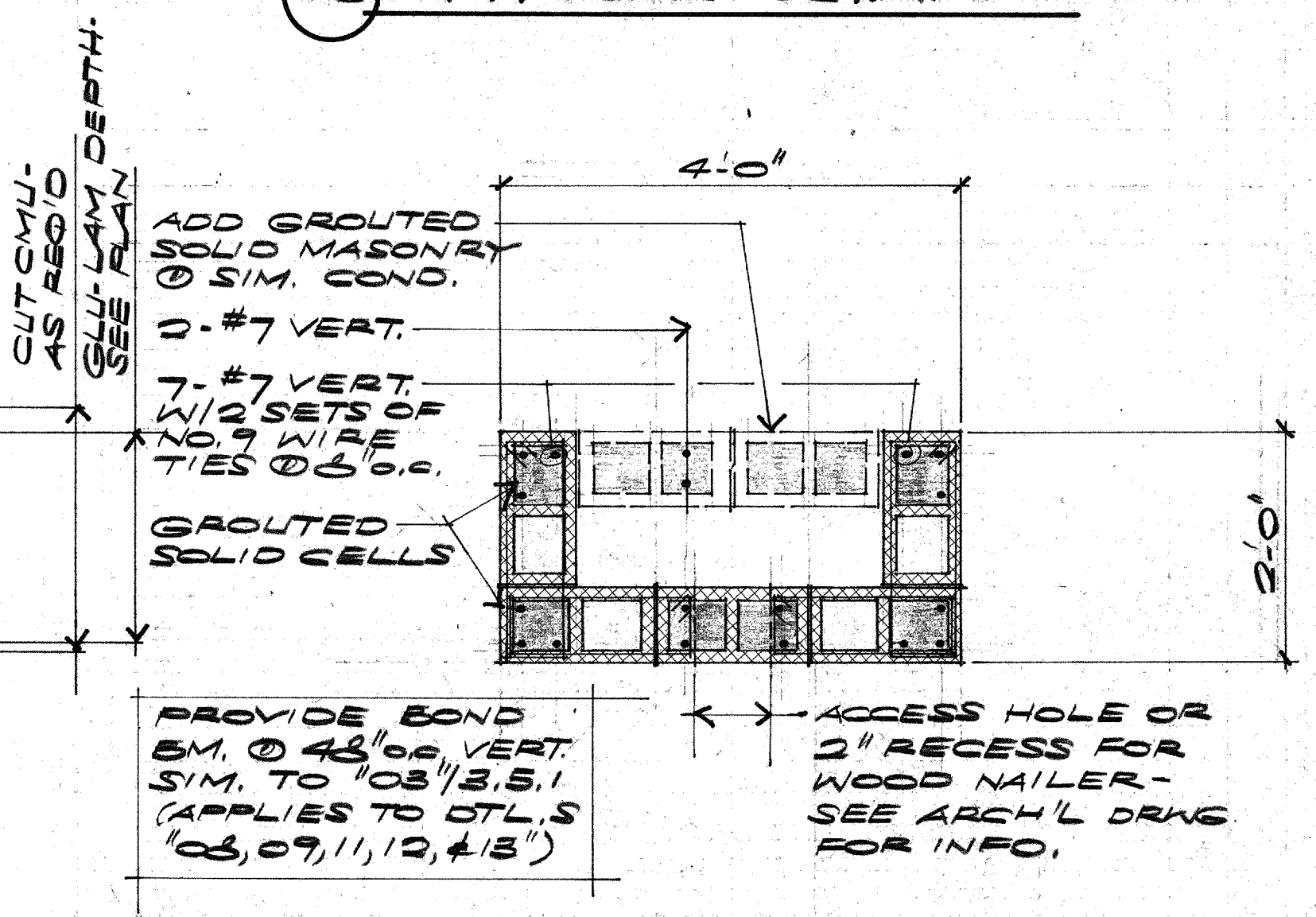
BRIDGING TO CMU WALL CONNX.  
06 TYPICAL DETAIL



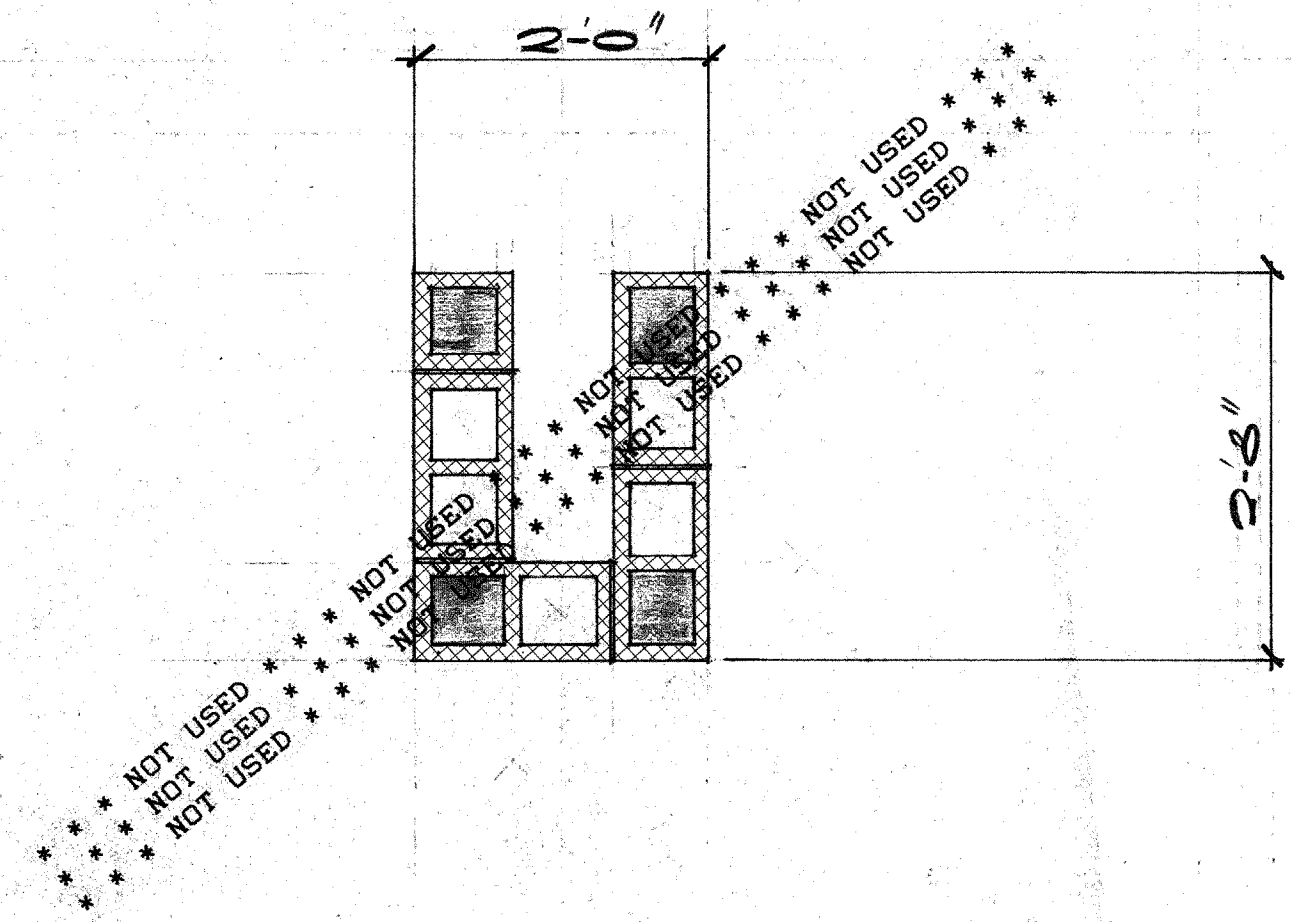
10 TYPICAL DETAIL



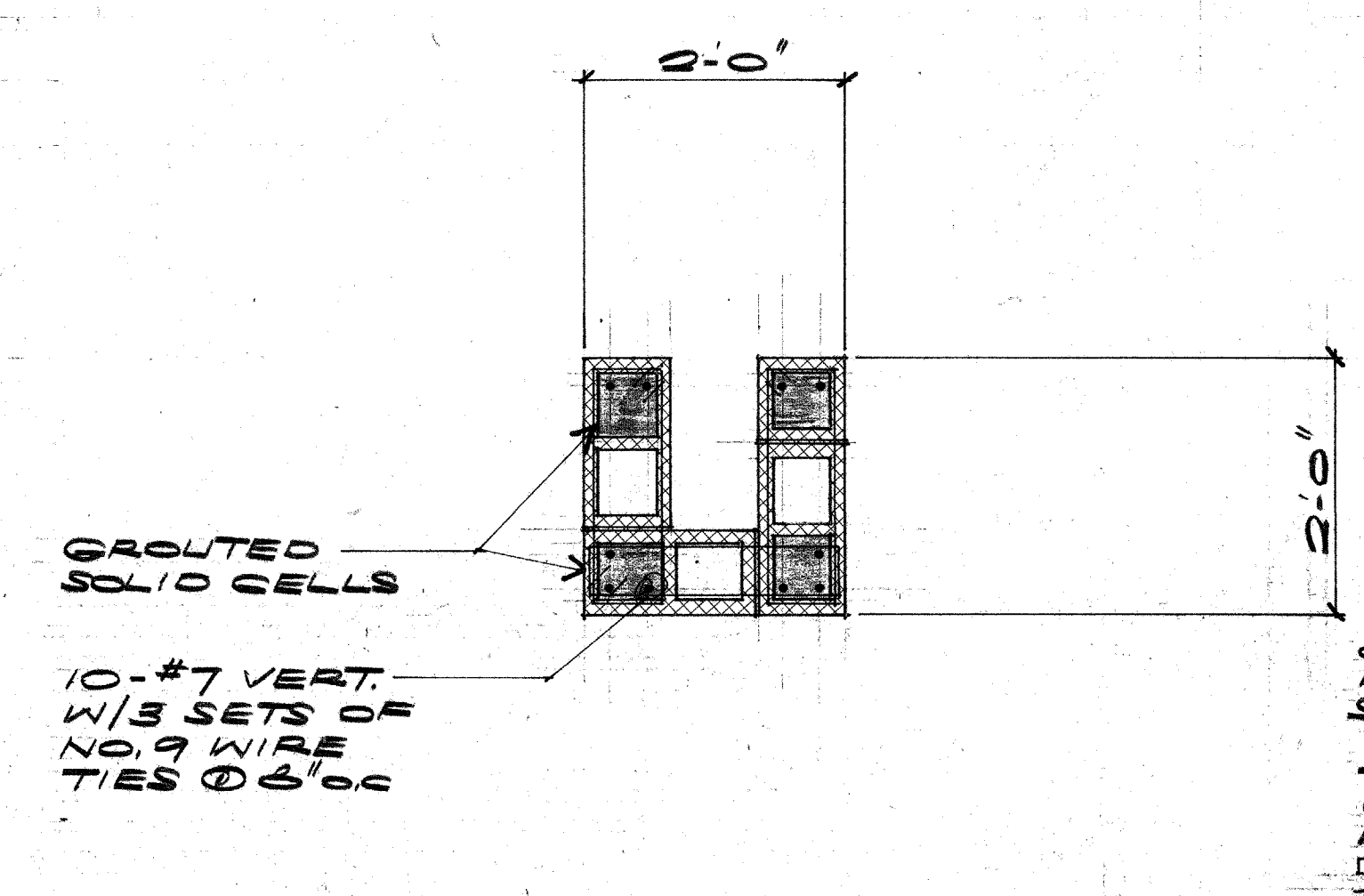
07 TYPICAL DETAIL



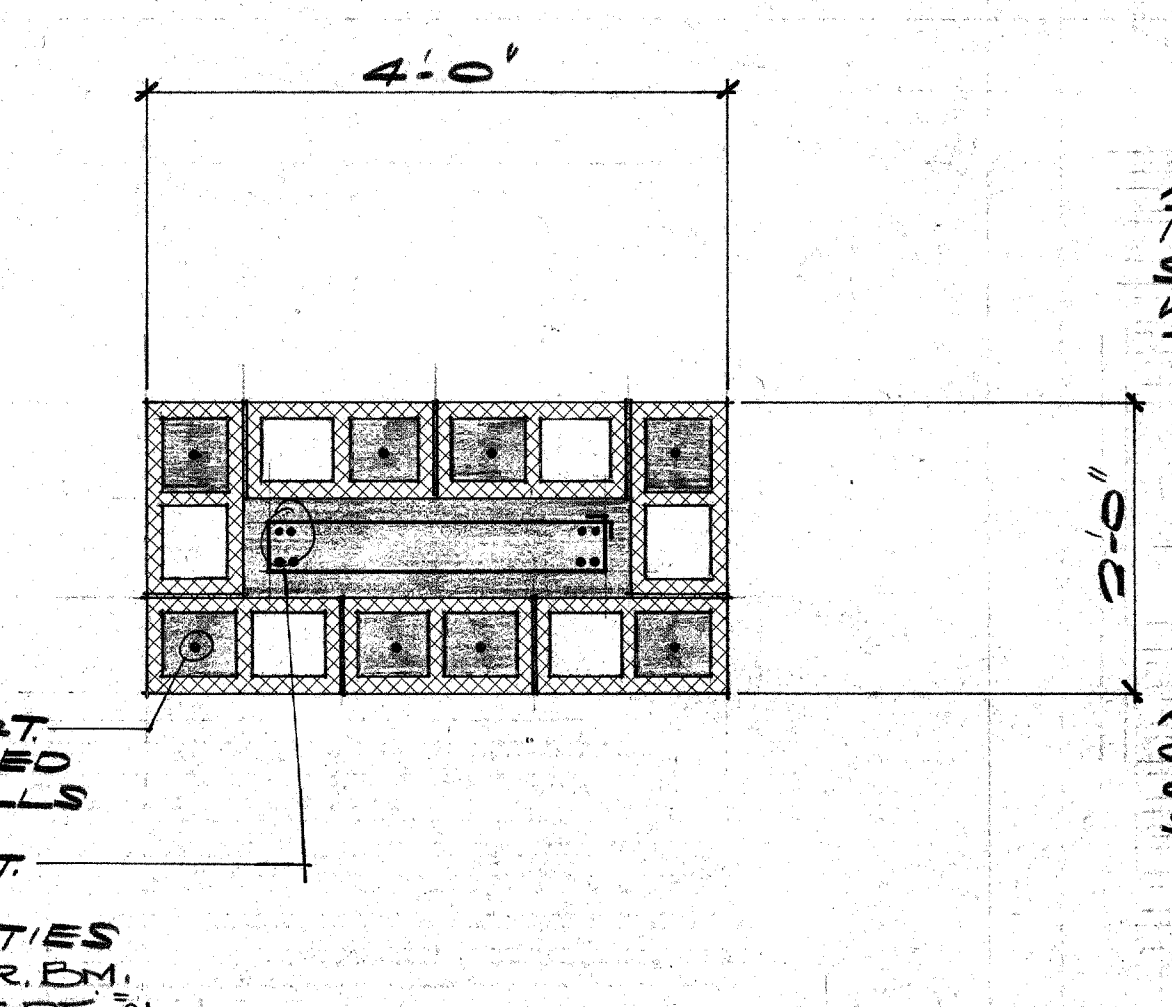
08 DETAIL



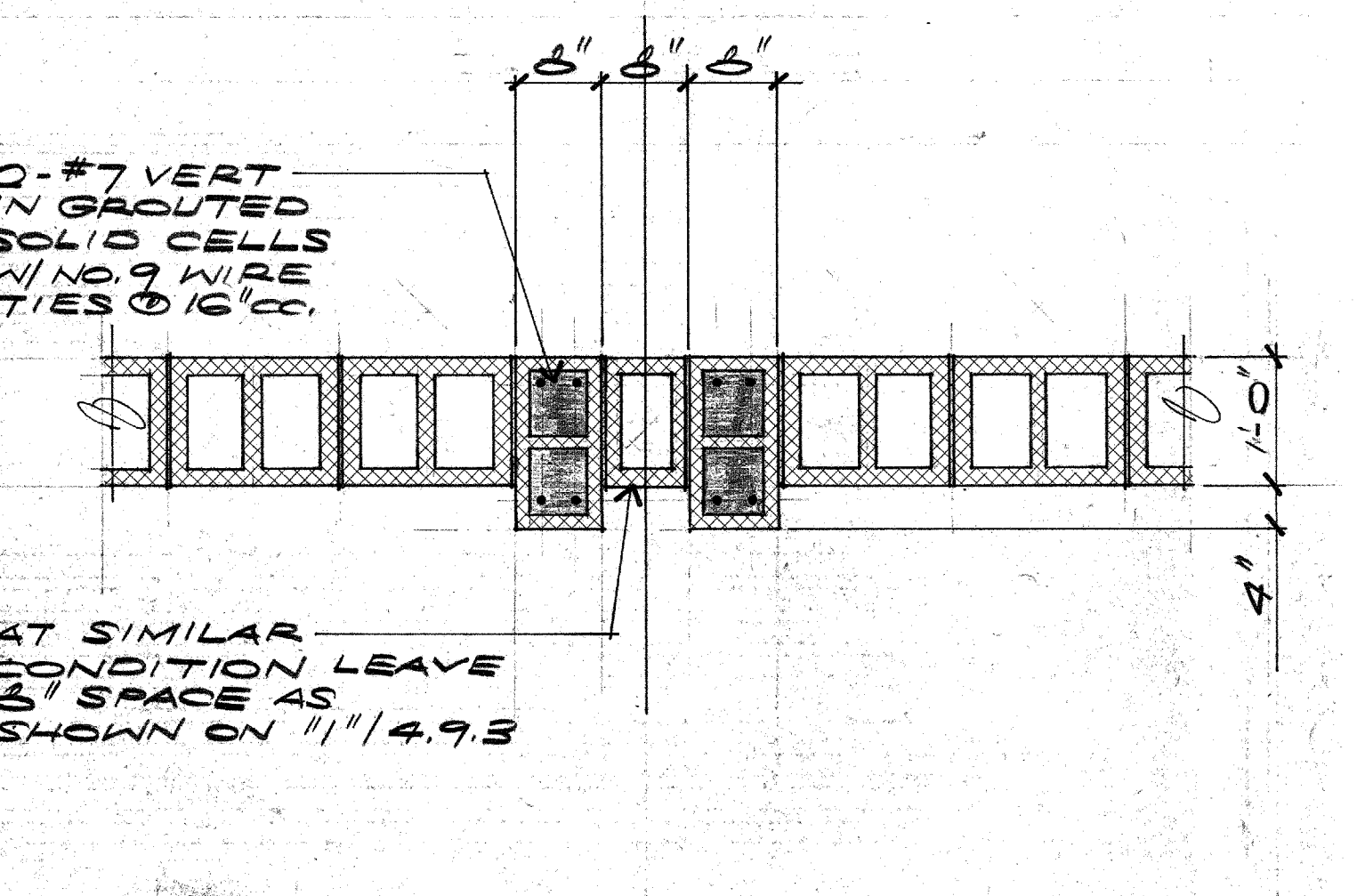
09 DETAIL



11 DETAIL

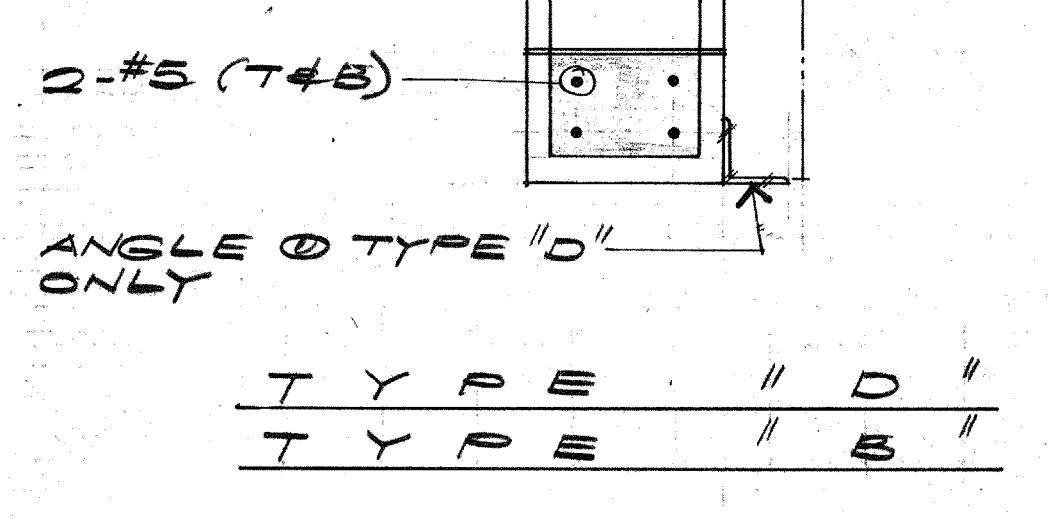


12 DETAIL

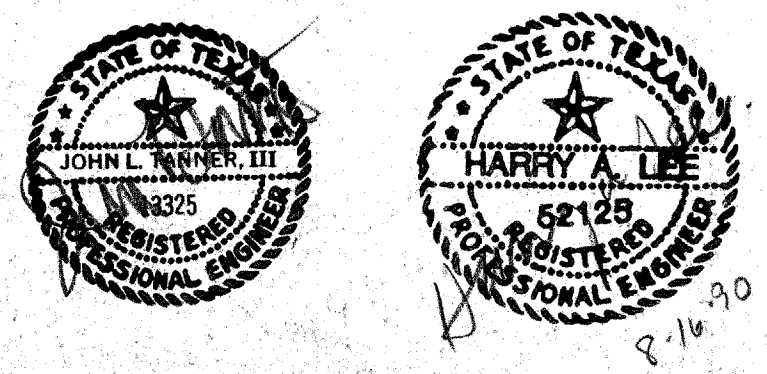


13 DETAIL

LINTEL SCHEDULE					
MARK	TYPE	'SL'	'BL'	MEMBER SIZE	REMARKS
L-1	B		6"	3x6 BOND BM.	
L-2	A	11'4"	6"	1W8x8I	ERS. #1/2 x 4 x 0.6' W/2-#2 @ 6' O.C. SOLID CELL
L-3	D	4'0"	6"	3x6 BOND BM.	2-#5 VERT. IN GROUTED SOLID CELLS



TYPE "C"



ACC ADDISON ACT

OWNER	LANDSCAPE	STRUCTURAL	HISTORIAN	Issue	Category	Subcategory	Sheet
Town of Addison	The Kellams Group 307-776-1417	Elison Turner 214-387-8333	Alan Mason 214-697-7822	ISSUE FOR BID 8-17-90	3	5	1
ARCHITECT	MEP CONSULTANT	M.E.P.	LIGHTING				
Cunningham Architects 2700 Farmington Dallas, Texas 75201 214-855-5272	Theatre Projects 214-754-4741 214-855-5272	MEP Systems 214-754-4741	Pamela Hill Wilson 214-923-6542				
INTERIORS	CIVIL	GRAPHICS					
CRS 718-552-2000	Kurtz & Associates 214-698-3322	Notterstad Design 214-954-1878					