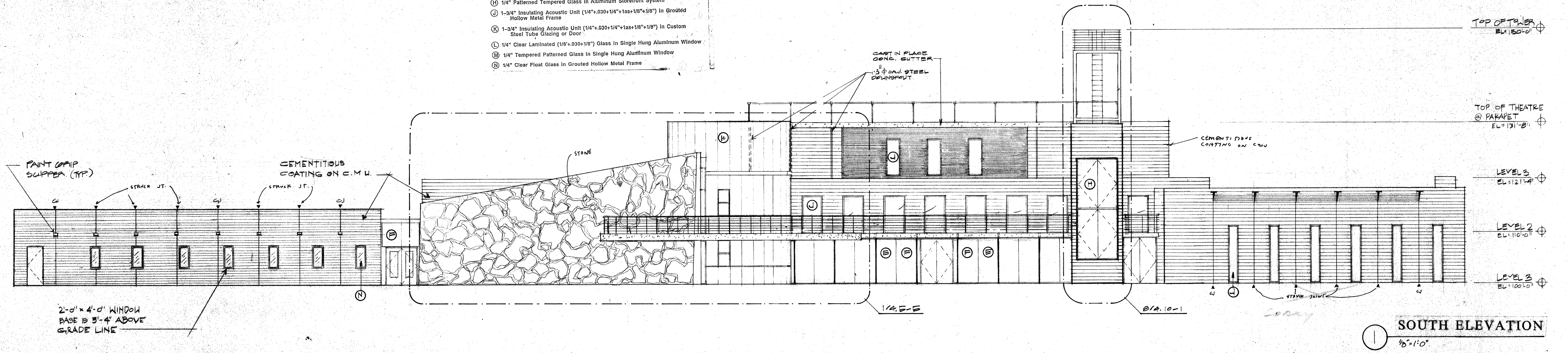


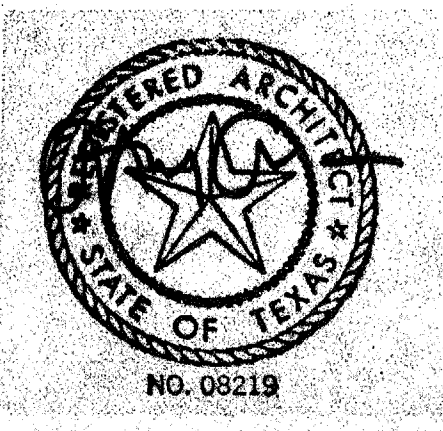
GLASS SCHEDULE

Key Type

- (A) 1/4" Clear Float Glass in Zipper Gasket System
- (B) 1/4" Patterned Float Glass in Zipper Gasket System
- (C) 1/4" Ceramic Coated Spandrol Tempered Glass in Zipper Gasket System
- (D) 1/4" Clear Tempered Glass in Zipper Gasket System
- (E) 1/4" Clear Float Glass in Aluminum Storefront System
- (F) 1/4" Clear Tempered Glass in Aluminum Storefront System
- (G) 1/4" Patterned Float Glass in Aluminum Storefront System
- (H) 1/4" Patterned Tempered Glass in Aluminum Storefront System
- (I) 1-3/4" Insulating Acoustic Unit (1/4" x .030 x 1/4" x 1.5 x 1.0" x 1/8") in Grouted Hollow Metal Frame
- (J) 1-3/4" Insulating Acoustic Unit (1/4" x .030 x 1/4" x 1.5 x 1.0" x 1/8") in Custom Steel Tube Glazing or Door
- (K) 1/4" Clear Laminated (1/8" x .030 x 1/8") Glass in Single Hung Aluminum Window
- (L) 1/4" Tempered Patterned Glass in Single Hung Aluminum Window
- (M) 1/4" Clear Float Glass in Grouted Hollow Metal Frame



OWNER	LANDSCAPE	STRUCTURAL	HISTORIAN	Issue	Category	Subcategory	Sheet
Town of Addison	The Kellars Group 317-776-1417	Elisor Tenner 214-367-8333	Alan Mason 214-801-7182	ISSUE FOR BID 6-17-90	4	5	3
ARCHITECT	THEATRE CONSULTANT	M.E.P.	LIGHTING				
O'Donoghue Architects 2700 Fairmount Dallas, Texas 75201 214-855-5272	Theatre Projects 203-431-3949	MEP Systems 214-754-4741	Pamela Hall Wilson 214-823-6542				
	INTERIORS	CIVIL	GRAPHICS				
	CRSS 710-582-2000	Kurtz & Associates 214-690-3322	Northwest Design 214-864-1978				



ACC ADDISON ACT

T