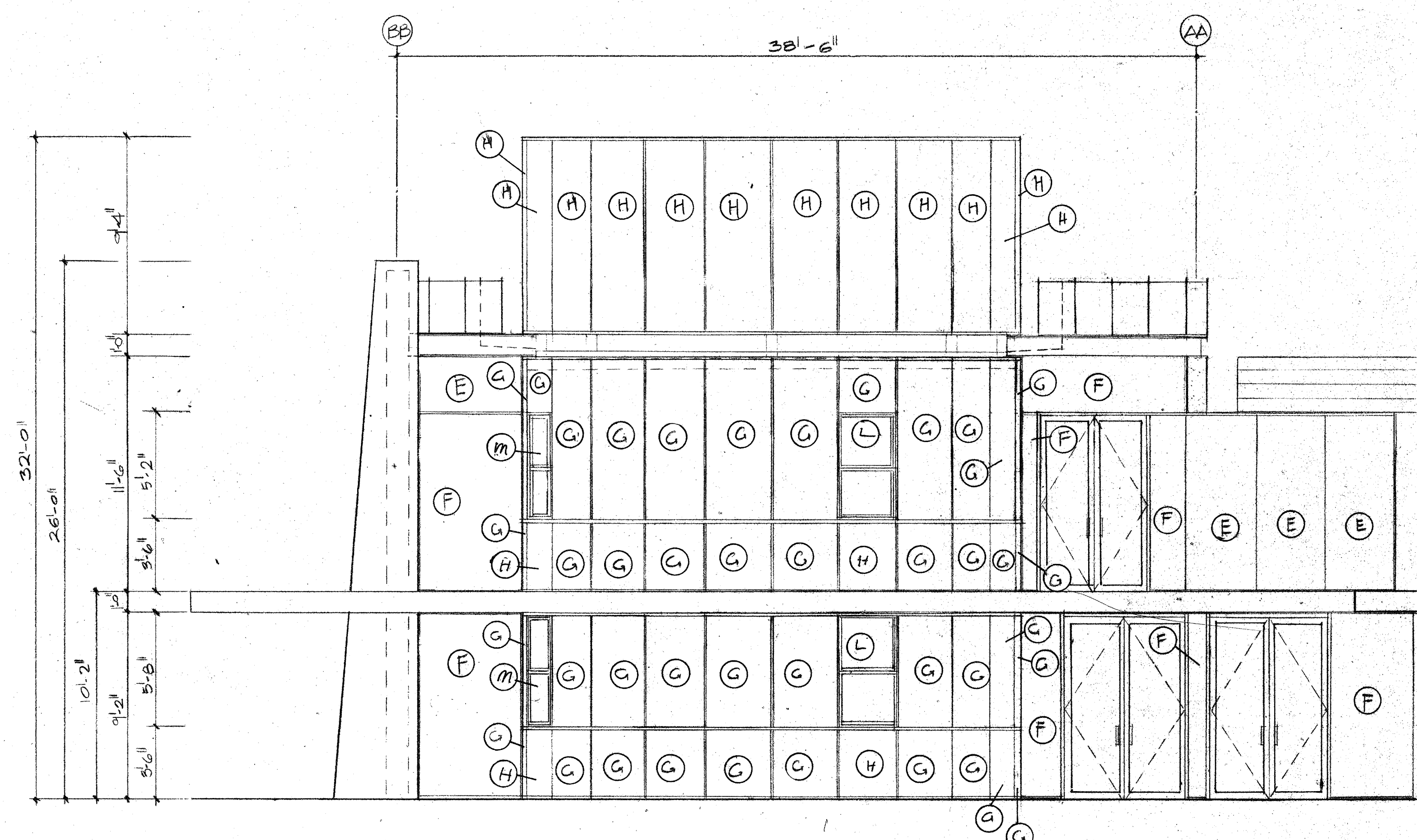


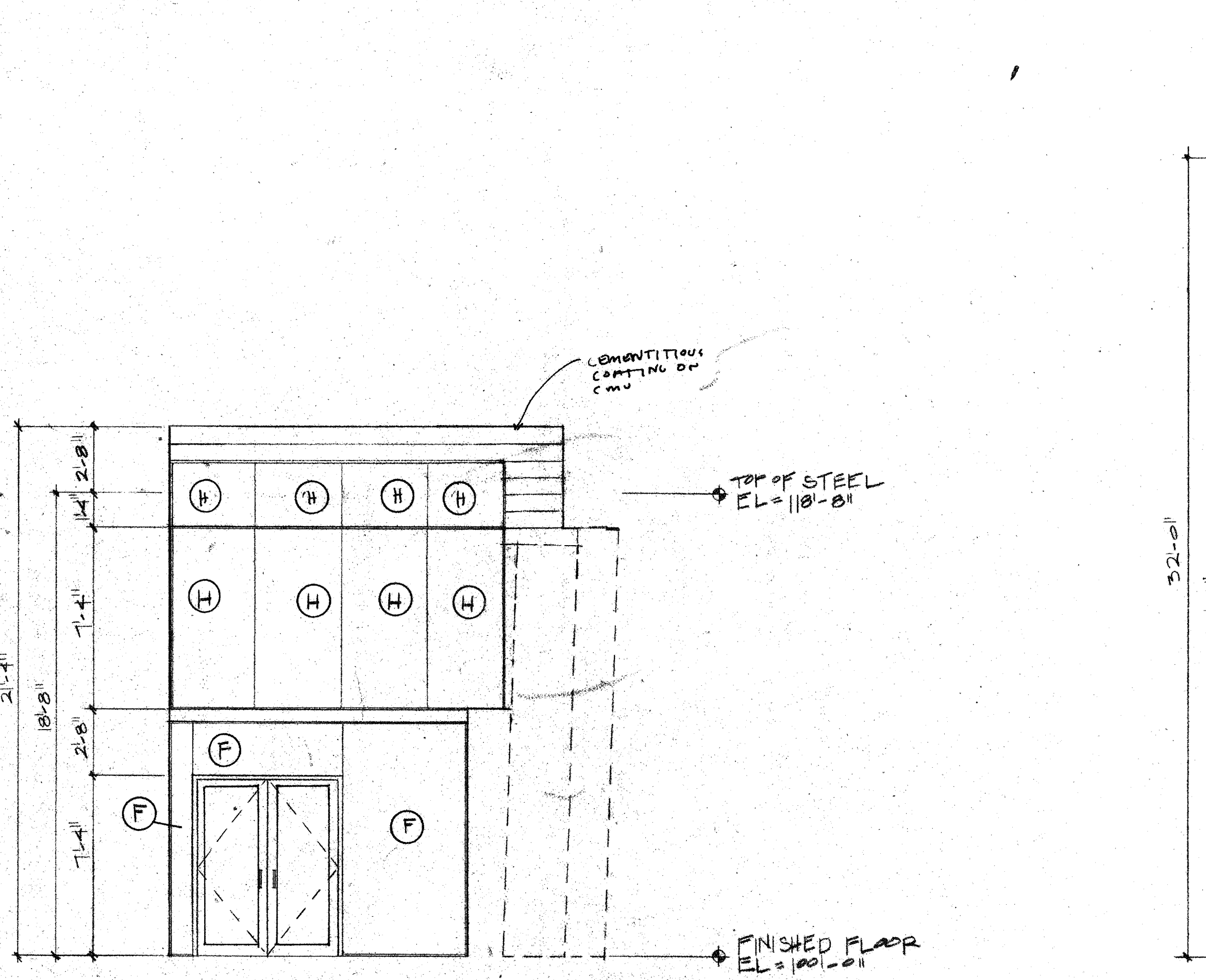
4 WEST ELEVATION
1/4" = 1'-0"

TOP OF PARAPET
EL=1321.01
 HIGH POINT OF MASONRY
EL=1261.01
 LOW POINT OF MASONRY
EL=1161.01
 TOP OF STEEL
EL=141.81
 TOP OF DISC
EL=101.01
 FINISHED FLOOR
EL=1001.01

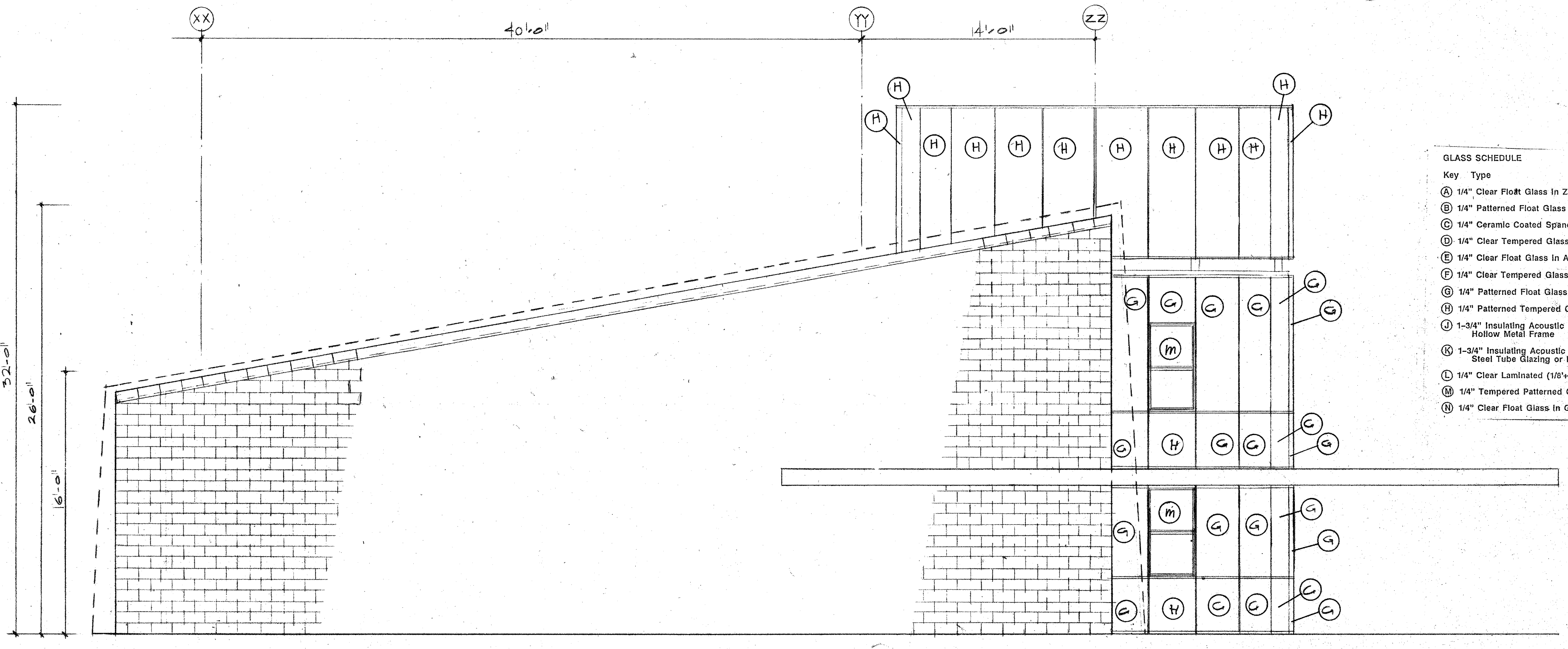


2 EAST ELEVATION
1/4" = 1'-0"

TOP OF PARAPET
EL=1321.01
 HIGH POINT OF ROOF
EL=1251.01
 TOP OF CMU WALL
EL=1211.41
 TOP OF DISC
EL=101.01
 FINISHED FLOOR
EL=1001.01



3 WEST ELEVATION
1/4" = 1'-0"

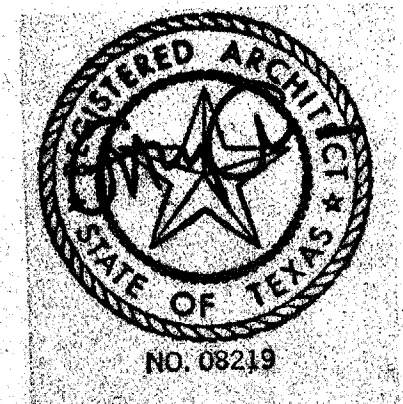


1 SOUTH ELEVATION
1/4" = 1'-0"

GLASS SCHEDULE

Key Type

- (A) 1/4" Clear Float Glass in Zipper Gasket System
- (B) 1/4" Patterned Float Glass in Zipper Gasket System
- (C) 1/4" Ceramic Coated Spandrel Tempered Glass in Zipper Gasket System
- (D) 1/4" Clear Tempered Glass in Zipper Gasket System
- (E) 1/4" Clear Float Glass in Aluminum Storefront System
- (F) 1/4" Clear Tempered Glass in Aluminum Storefront System
- (G) 1/4" Patterned Float Glass in Aluminum Storefront System
- (H) 1/4" Patterned Tempered Glass in Aluminum Storefront System
- (I) 1-3/4" Insulating Acoustic Unit (1/4" x .030 x 1/4" x 1/8" x 1/8") in Grouted Hollow Metal Frame
- (J) 1-3/4" Insulating Acoustic Unit (1/4" x .030 x 1/4" x 1/8" x 1/8") in Custom Steel Tube Glazing or Door
- (L) 1/4" Clear Laminated (1/8" x .030 x 1/8") Glass in Single Hung Aluminum Window
- (M) 1/4" Tempered Patterned Glass in Single Hung Aluminum Window
- (N) 1/4" Clear Float Glass in Grouted Hollow Metal Frame



ACC ADDISON ACT

OWNER	LANDSCAPE	STRUCTURAL	HISTORIAN	Issue	Category	Subcategory	Sheet
Town of Addison The Kellams Group 317-776-1417	M.E.P. Theatre Projects 203-431-3949	M.E.P. MEP Systems 214-754-4741	Alan Mason 214-851-7892	ISSUE FOR BID 8-17-90	4	5	5
ARCHITECT Cunningham Architects 2700 Fairmount Dallas, Texas 75201 214-855-5272	INTERIORS CRSS 713-562-2000	CIVIL Kagitz & Associates 214-350-3322	LIGHTING Pamela Hull Wilson 214-823-8542				
			GRAPHICS Norman Design 214-354-9378				

T