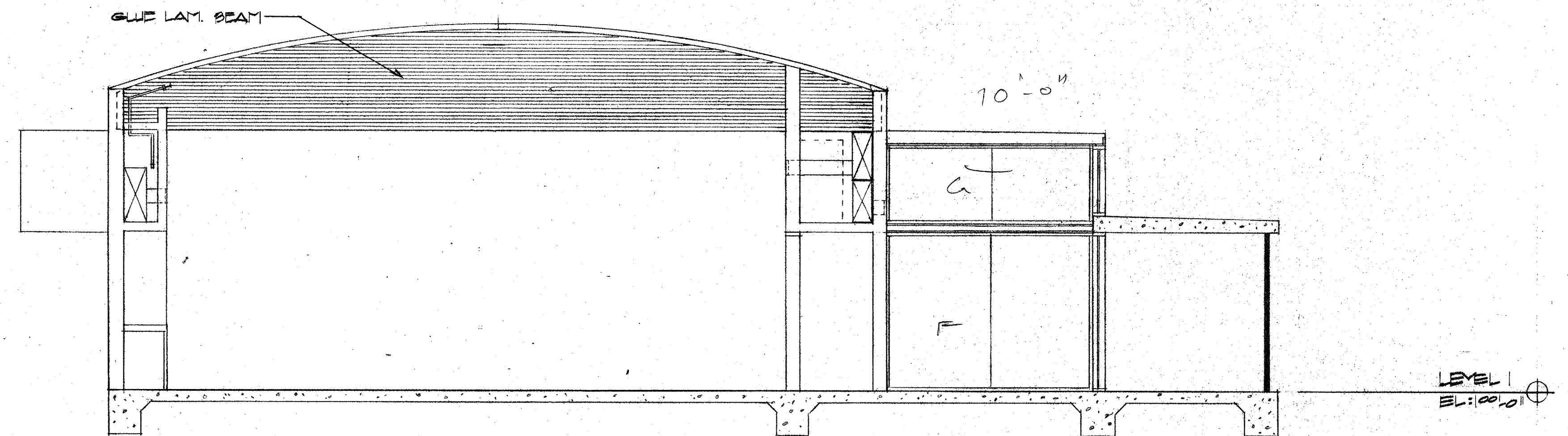
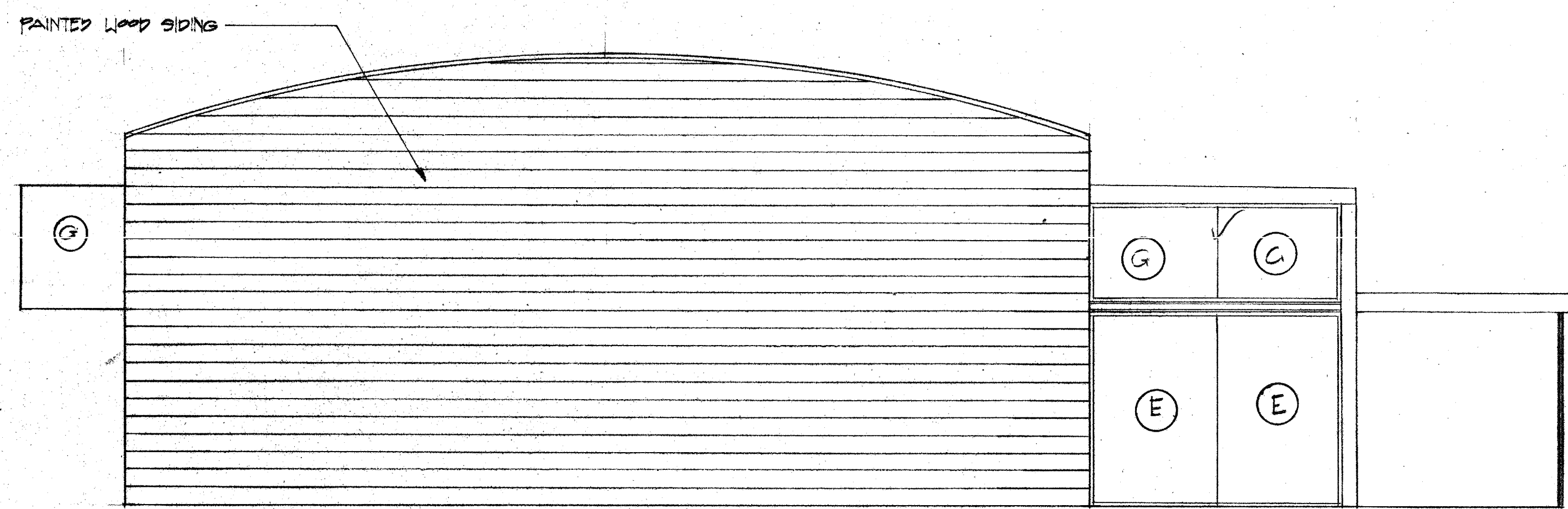


**G SECTION**  
1/4" = 1'-0"



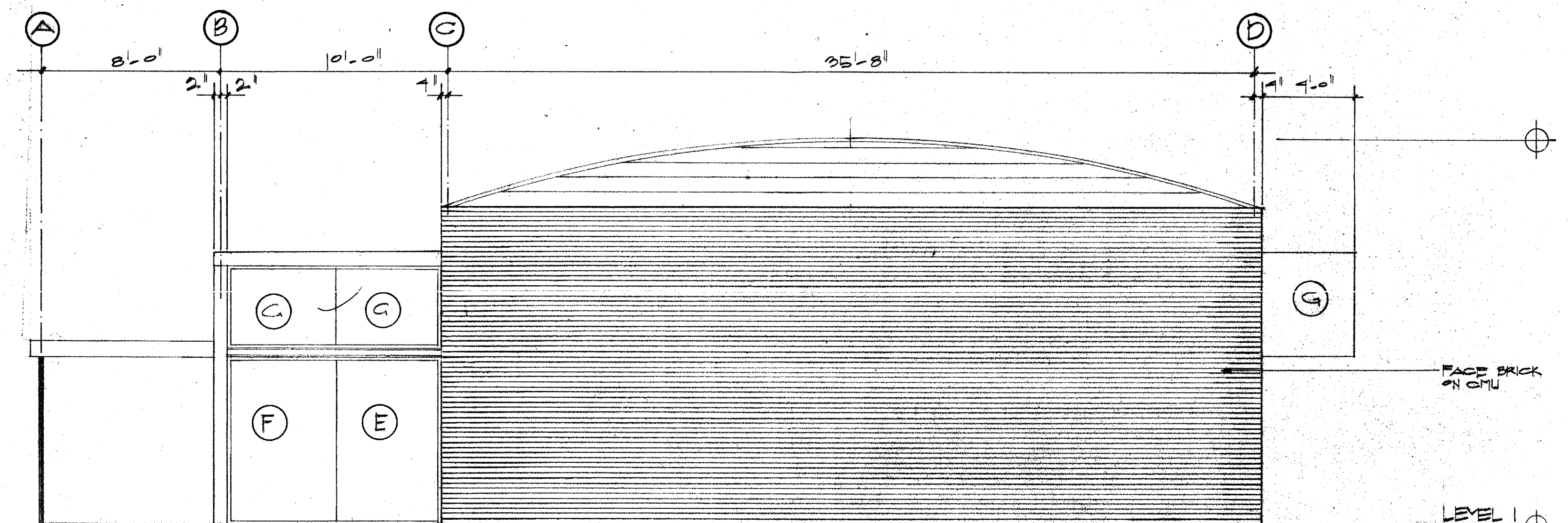
**E SECTION**  
1/4" = 1'-0"



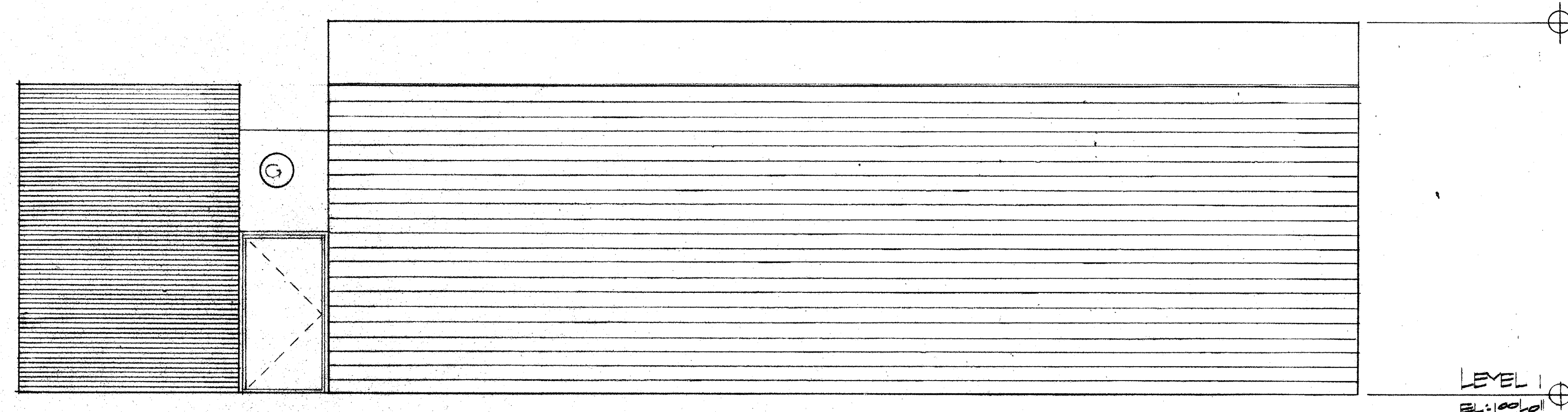
**4 EAST ELEVATION**  
1/4" = 1'-0"

**GLASS SCHEDULE**

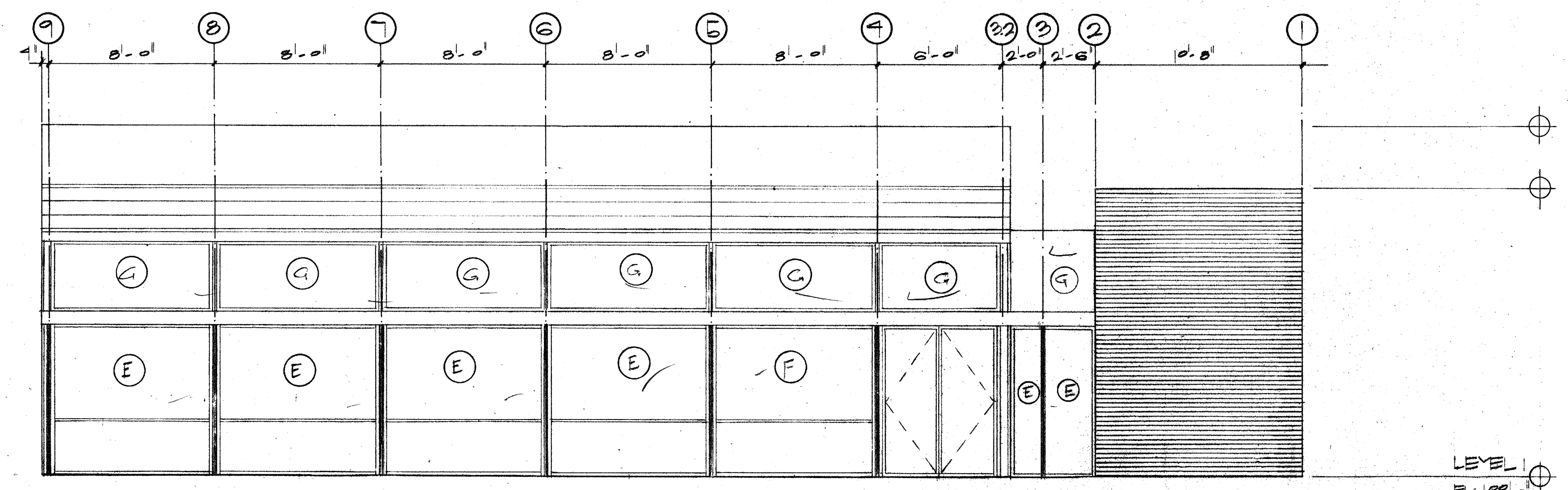
- Key Type
- A 1/4" Clear Float Glass in Zipper Gasket System
  - B 1/4" Patterned Float Glass in Zipper Gasket System
  - C 1/4" Ceramic Coated Spandrel Tempered Glass in Zipper Gasket System
  - D 1/4" Clear Tempered Glass in Zipper Gasket System
  - E 1/4" Clear Float Glass in Aluminum Storefront System
  - F 1/4" Clear Tempered Glass in Aluminum Storefront System
  - G 1/4" Patterned Float Glass in Aluminum Storefront System
  - H 1/4" Patterned Tempered Glass in Aluminum Storefront System
  - J 1-3/4" Insulating Acoustic Unit (1/4"x.030+1/4"x.1as+1/8"x1/8") in Grouted Hollow Metal Frame
  - K 1-3/4" Insulating Acoustic Unit (1/4"x.030+1/4"x.1as+1/8"x1/8") in Custom Steel Tube Glazing or Door
  - L 1/4" Clear Laminated (1/8"x.030+1/8") Glass in Single Hung Aluminum Window
  - M 1/4" Tempered Patterned Glass in Single Hung Aluminum Window
  - N 1/4" Clear Float Glass in Grouted Hollow Metal Frame



**3 WEST ELEVATION**  
1/4" = 1'-0"



**2 SOUTH ELEVATION**  
1/4" = 1'-0"



**1 NORTH ELEVATION**  
1/4" = 1'-0"

NOTE: ALL WORK ASSOCIATED WITH COMMUNITY HOUSE IS TO BE PRICED AS ALTERNATE NO. 1



**ACC ADDISON ACT**

OWNER	LANDSCAPE	STRUCTURAL	HISTORIAN	Issue	Category	Subcategory	Sheet
Town of Addison	The Williams Group 397-736-1417	Elliot Stinner 214-387-8383	Abbi Mason 214-691-7892	ISSUE FOR BID 8-17-90	4	6	5
ARCHITECT	THEATRE CONSULTANT	M.E.P.	LIGHTING				
Cunningham Architects 2700 Fairmount Dallas, Texas 75201 214-856-5272	Theatre Projects 203-431-3949	MEP Systems 214-754-4741	Parrella Hall Wilson 214-823-8542				
INTERIORS	CRSS	CVIL	GRAPHICS				
	713-562-2000	Kurtz & Associates 214-690-3322	Netstead Design 214-954-1878				