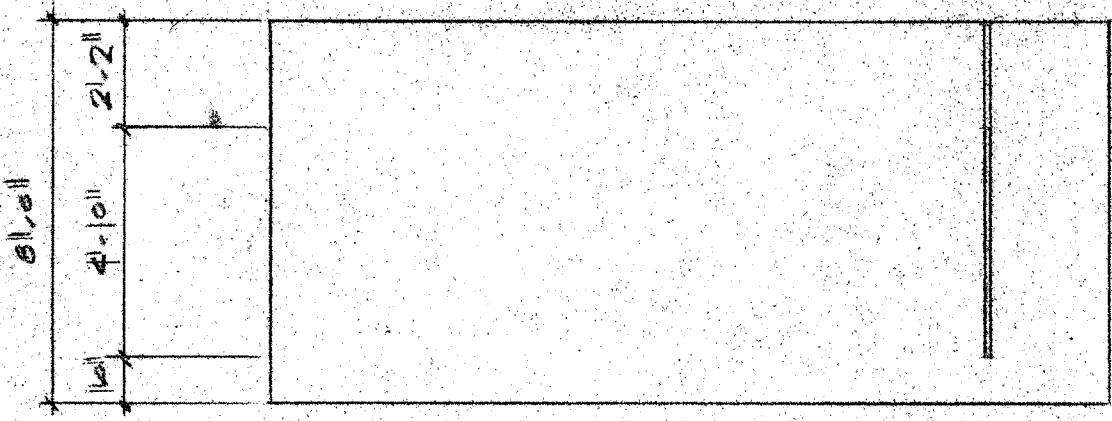
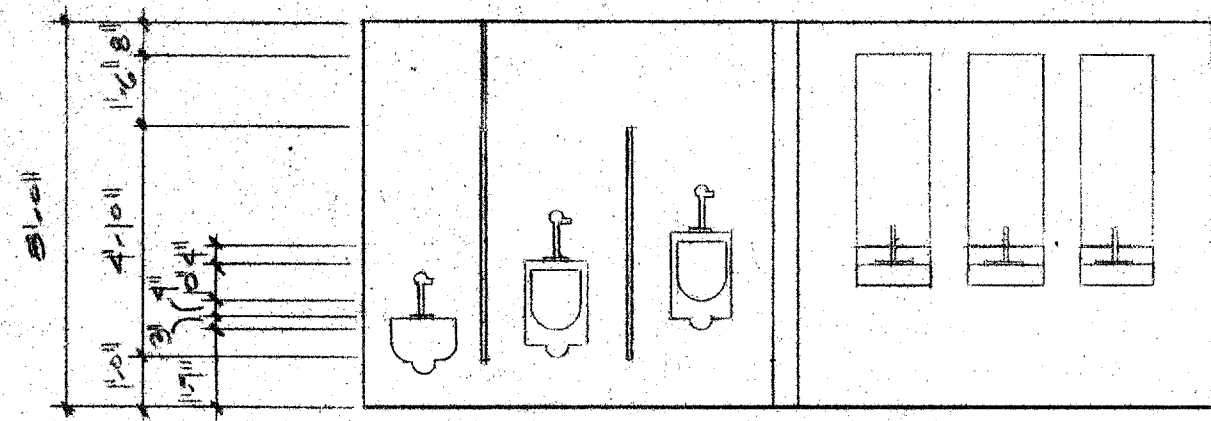


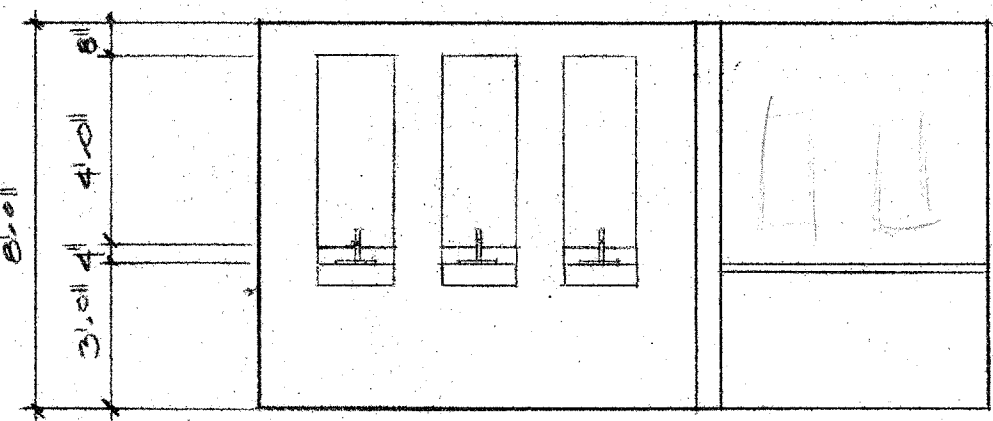
15 ELEVATION @ PRE-FUNCTION 1/8"=1'-0"



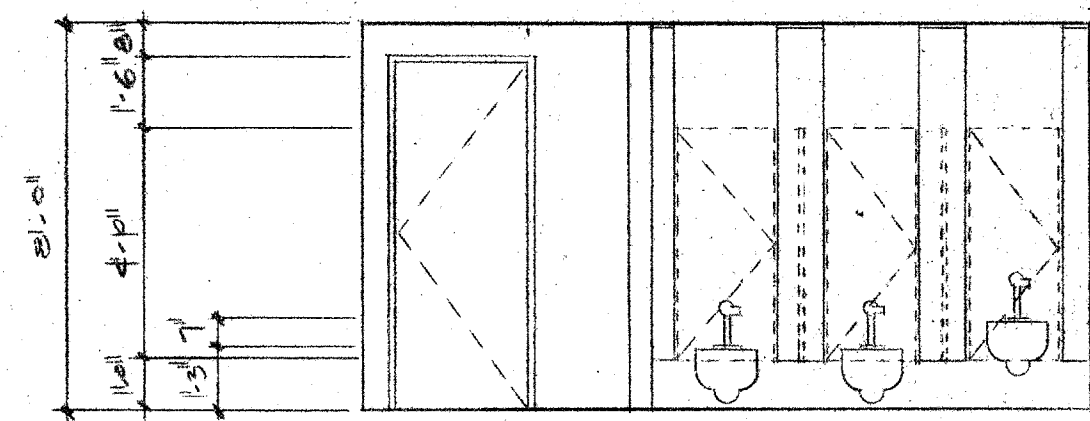
14 MEN'S TOILET 1/4"=1'-0"



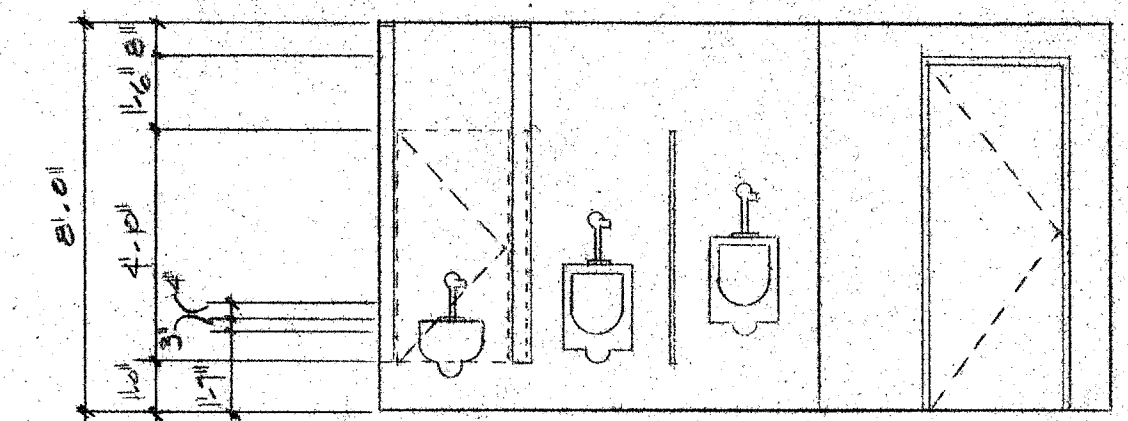
10 MEN'S TOILET 1/4"=1'-0"



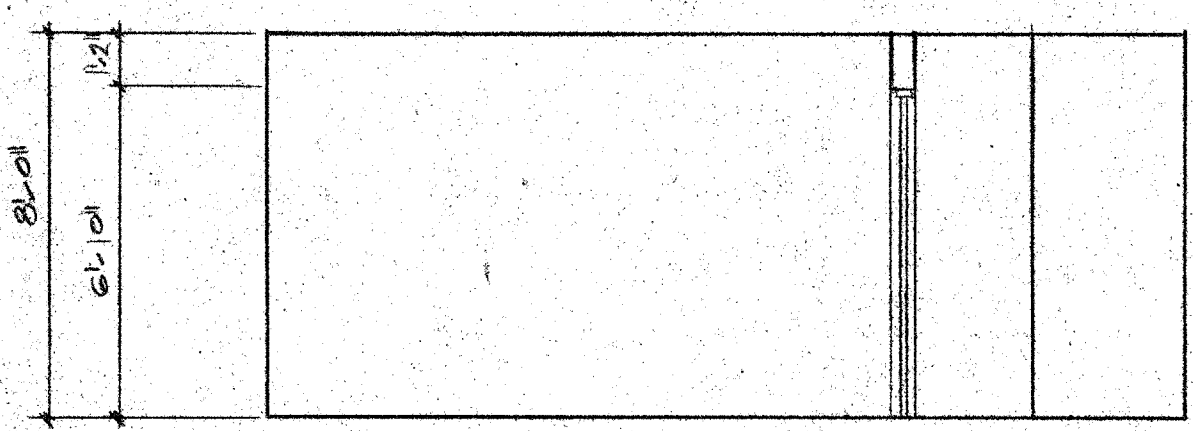
8 WOMEN'S TOILET 1/4"=1'-0"



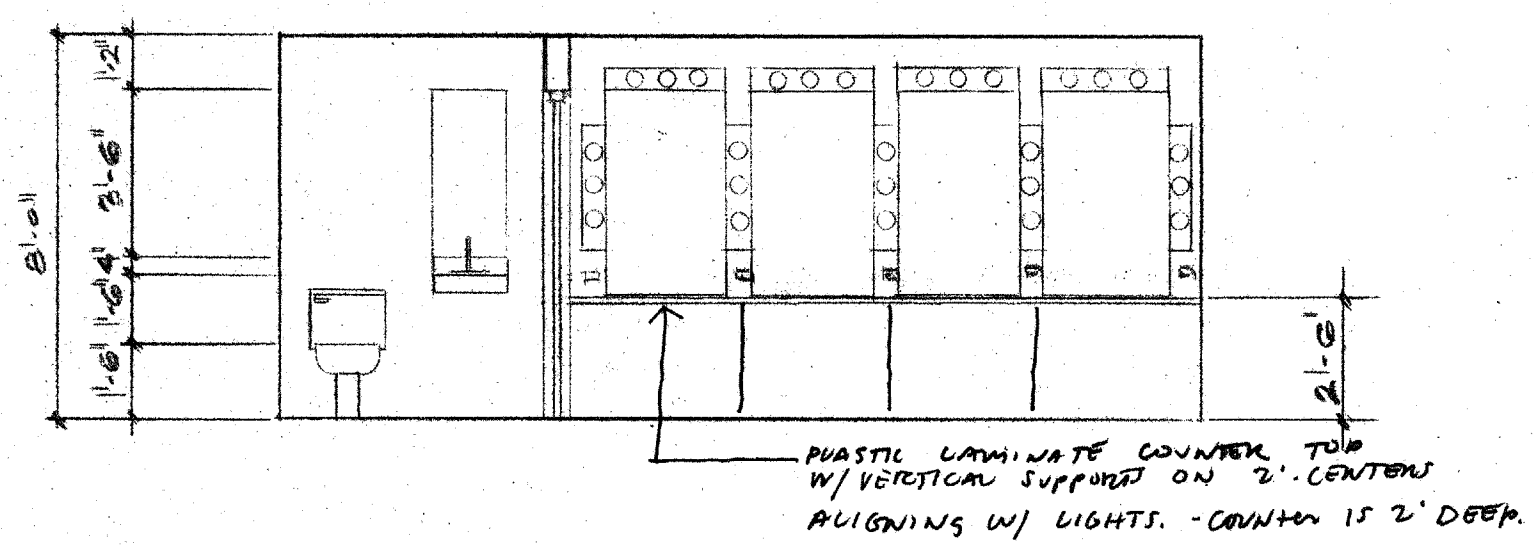
6 WOMEN'S TOILET 1/4"=1'-0"



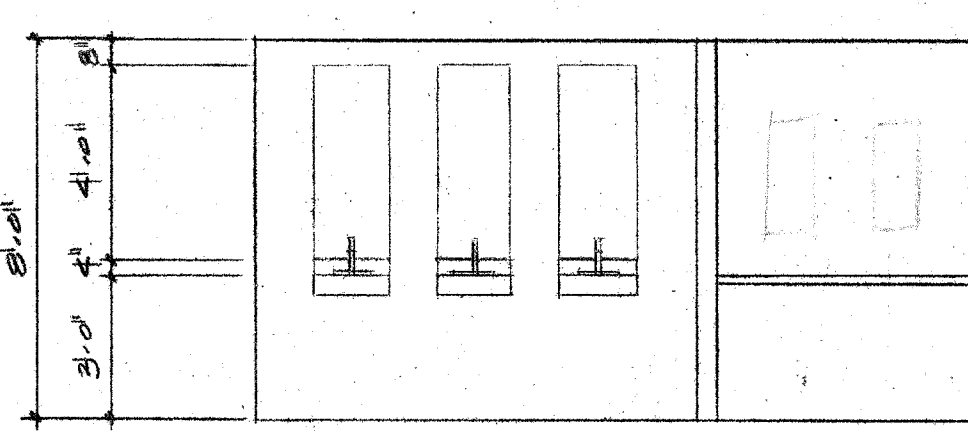
4 MEN'S TOILET 1/4"=1'-0"



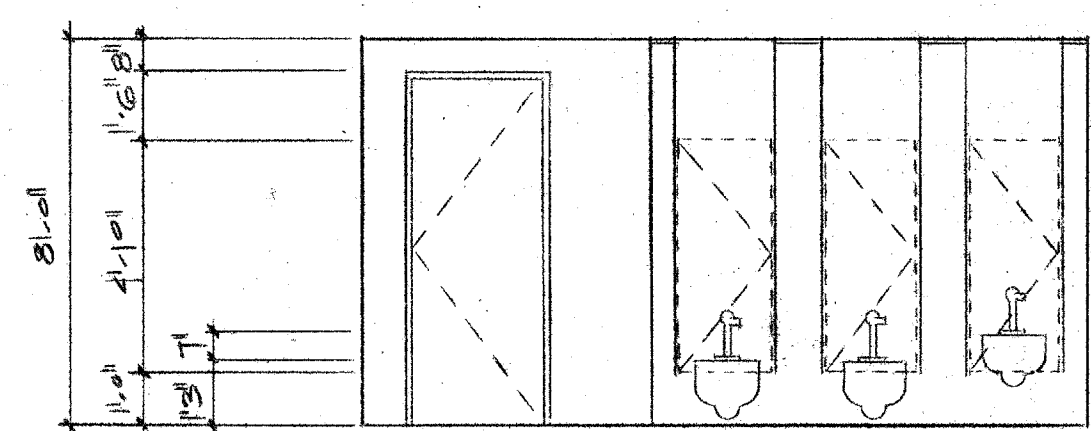
13 DRESSING ROOM 1/4"=1'-0"



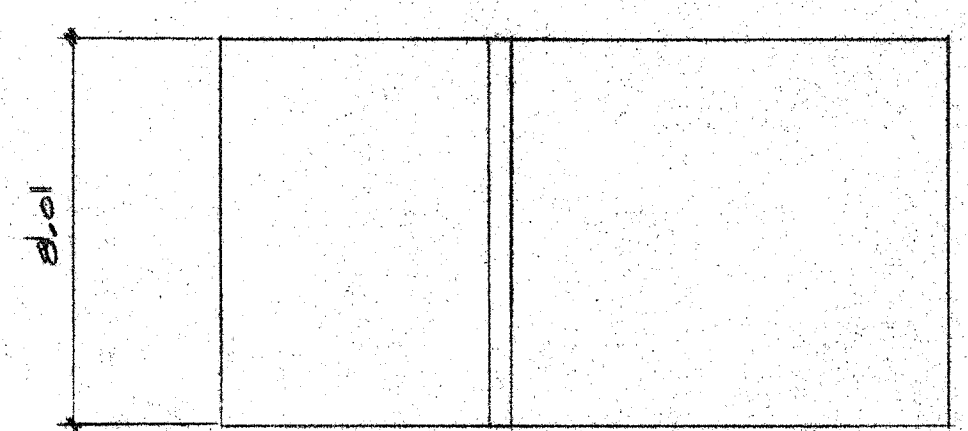
9 DRESSING ROOM 1/4"=1'-0"



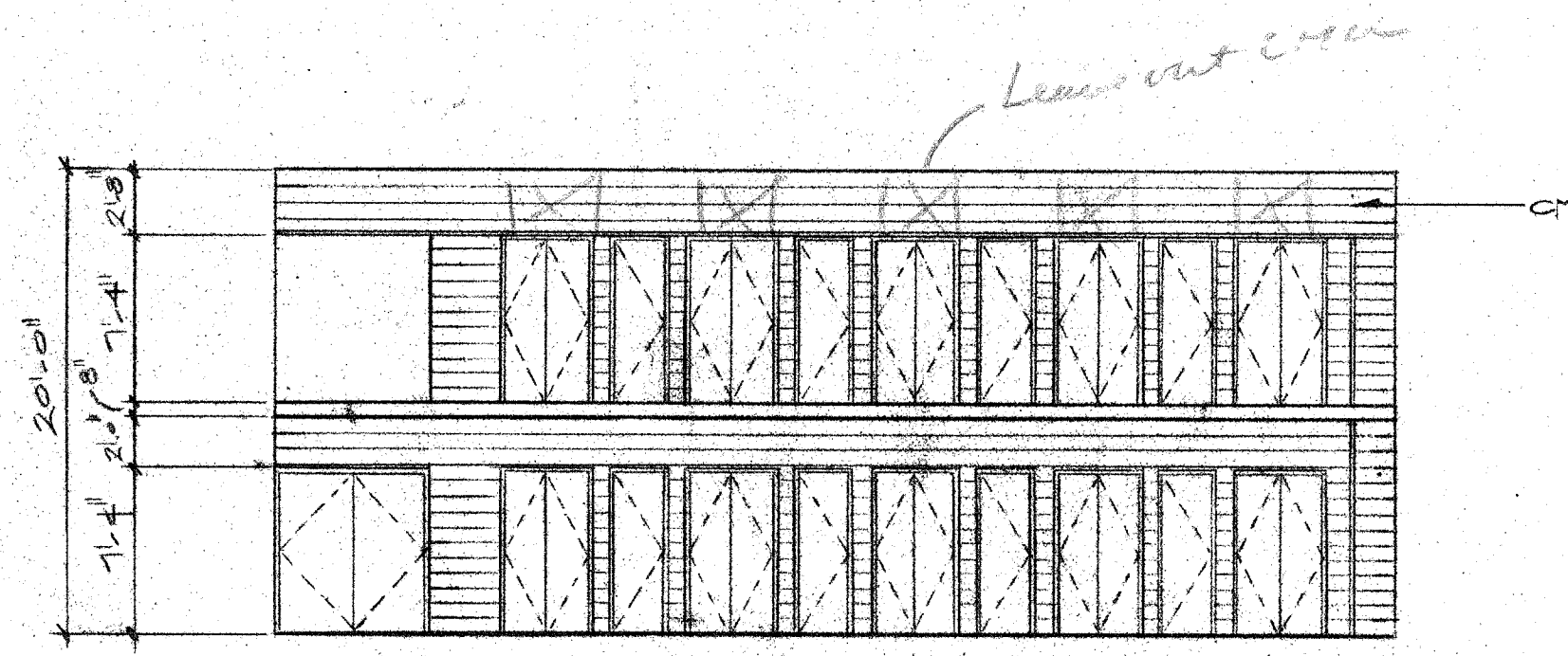
7 WOMEN'S TOILET 1/4"=1'-0"



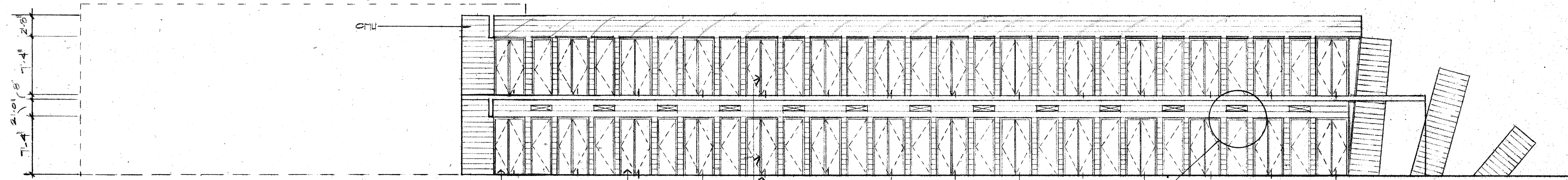
5 WOMEN'S TOILET 1/4"=1'-0"



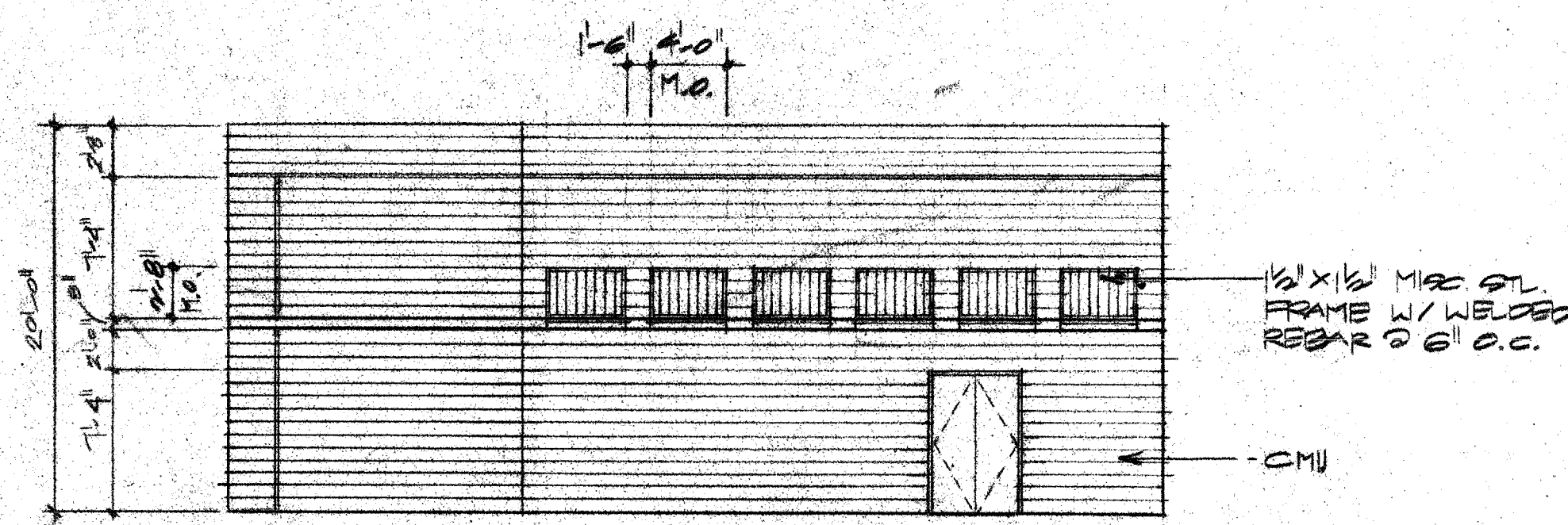
3 MEN'S TOILET 1/4"=1'-0"



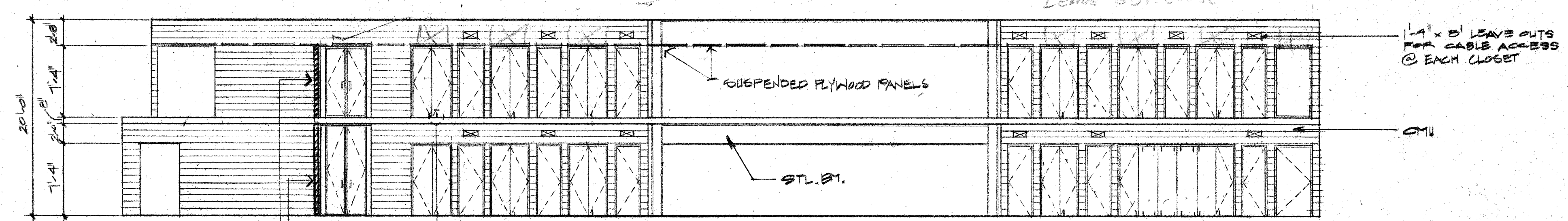
12 EAST SECTION/ELEVATION 1/8"=1'-0"



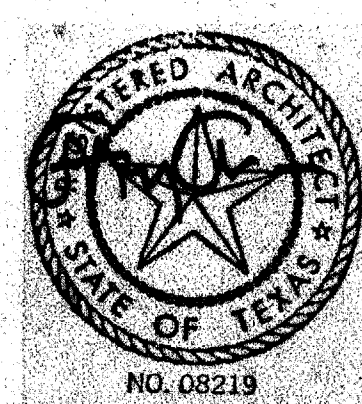
2 SOUTH SECTION/ELEVATION 1/8"=1'-0"



11 WEST SECTION/ELEVATION 1/8"=1'-0"



1 NORTH SECTION/ELEVATION 1/8"=1'-0"



ACC ACT
ADDISON

OWNER	LANDSCAPE	STRUCTURAL	HISTORICAL	Issue	Category	Subcategory	Sheet
Town of Addison	The Kellars Group 39-776-917	Stark Tower 214-387-8383	Alan Mack 214-691-7782	ISSUE FOR BID 8-17-90	4	7	10
ARCHITECT	THEATRE CONSULTANT	M.E.P.	LIGHTING				
Cunningham Architects 2700 Fairmont Dallas, Texas 75201 214-855-5272	Theatre Projects 203-431-3849	M.E.P. Systems 214-754-4241	Parrella Hall Wilson 214-823-8642				
INTERIORS	CIVIL		GRAPHICS				
CRSS 710-552-2000	Kurtz & Associates 214-695-3322		Historical Design 214-854-1878				