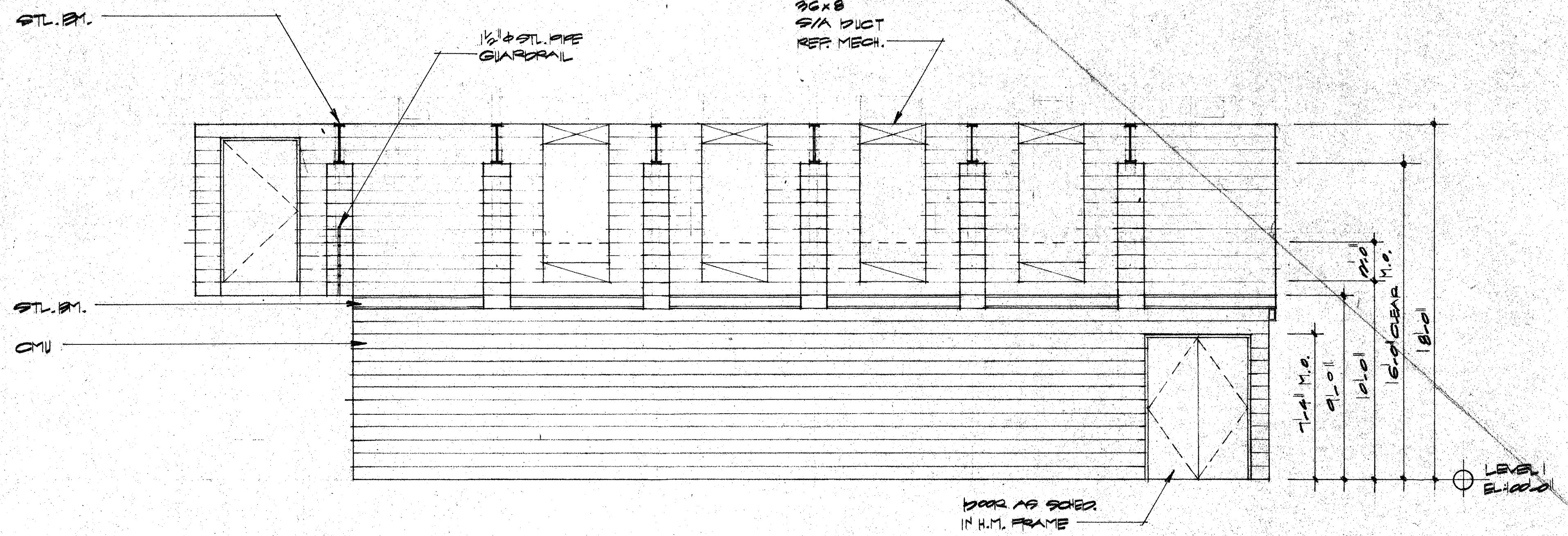
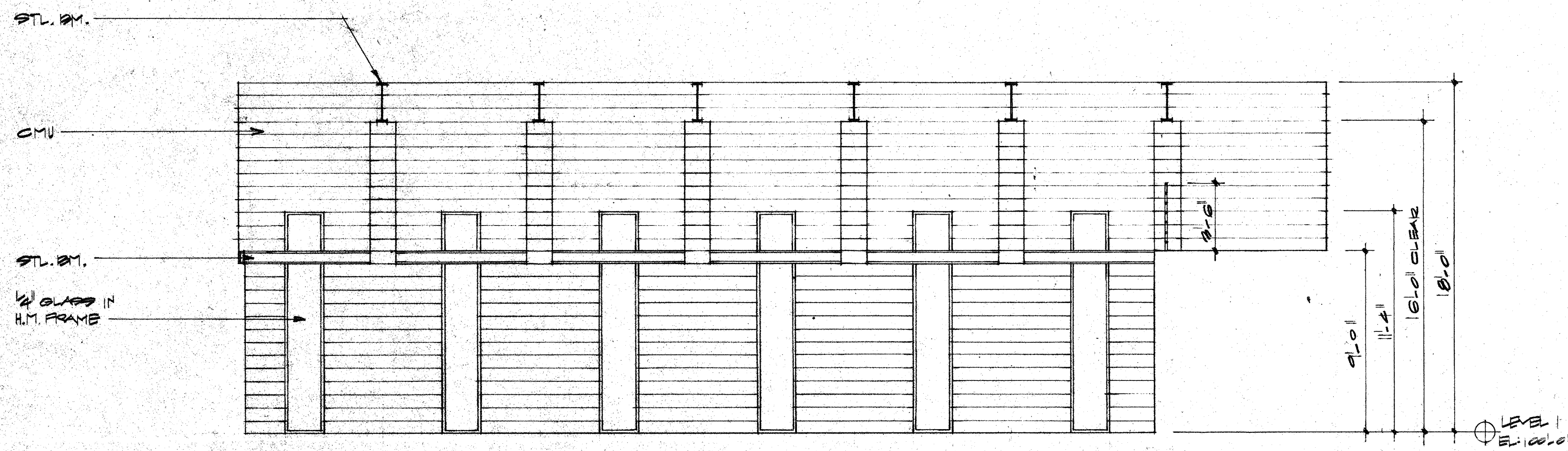


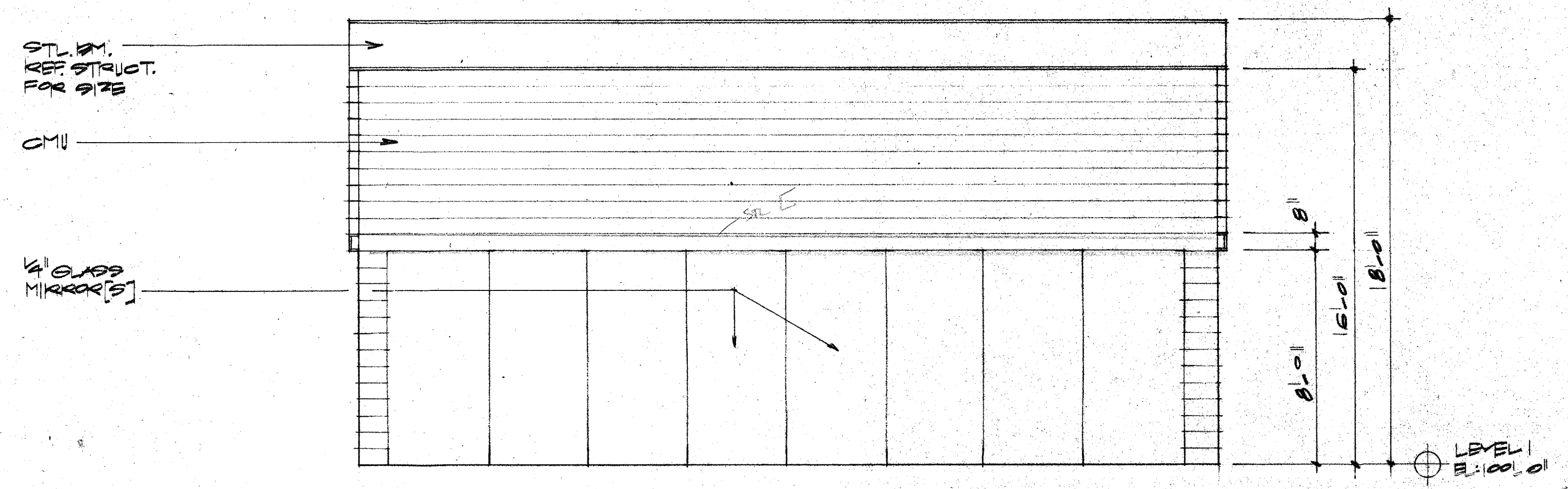
12 REHEARSAL ROOM WEST ELEVATION
1/4" = 1'-0"



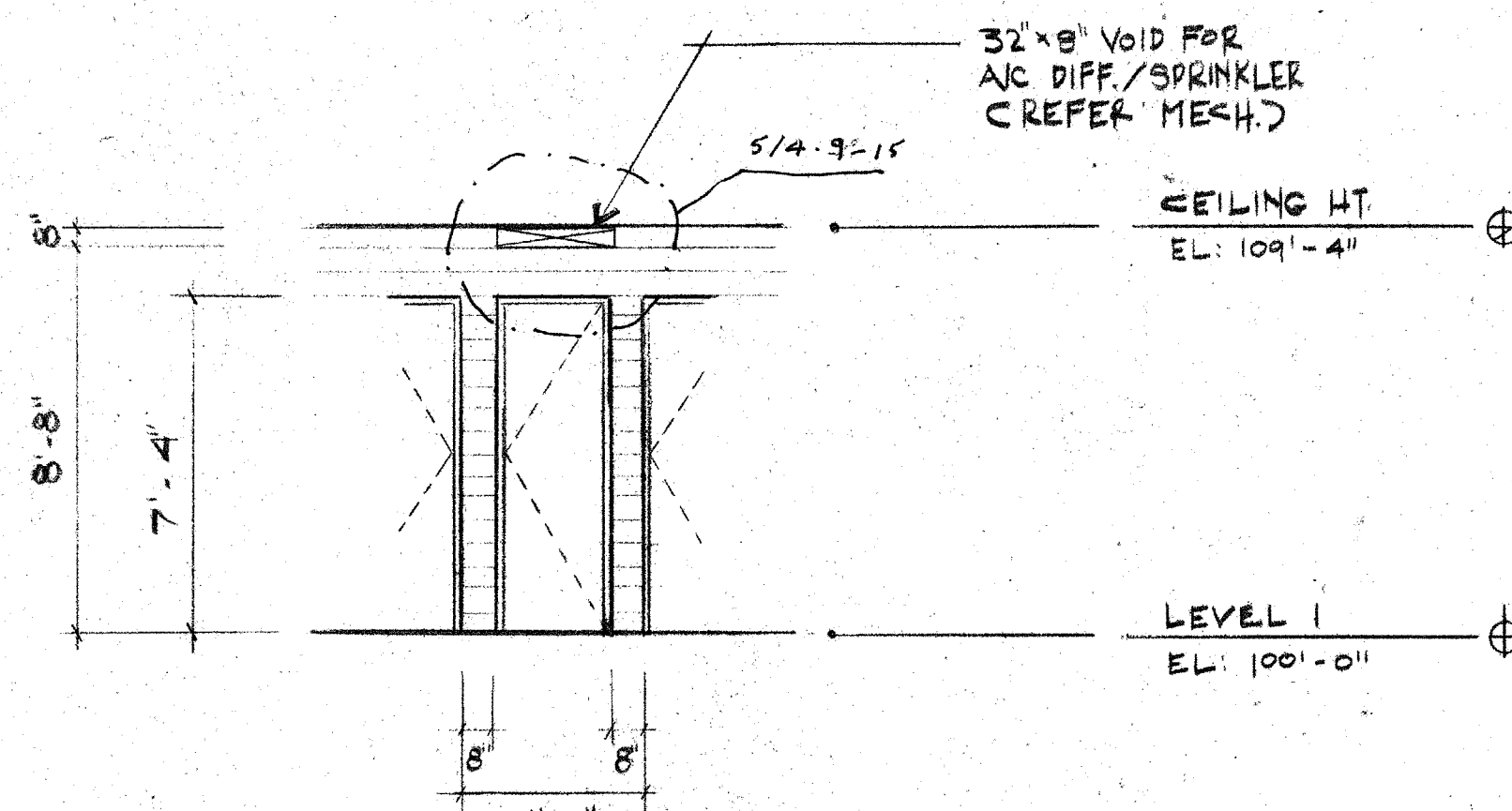
11 REHEARSAL ROOM NORTH ELEVATION
1/4" = 1'-0"



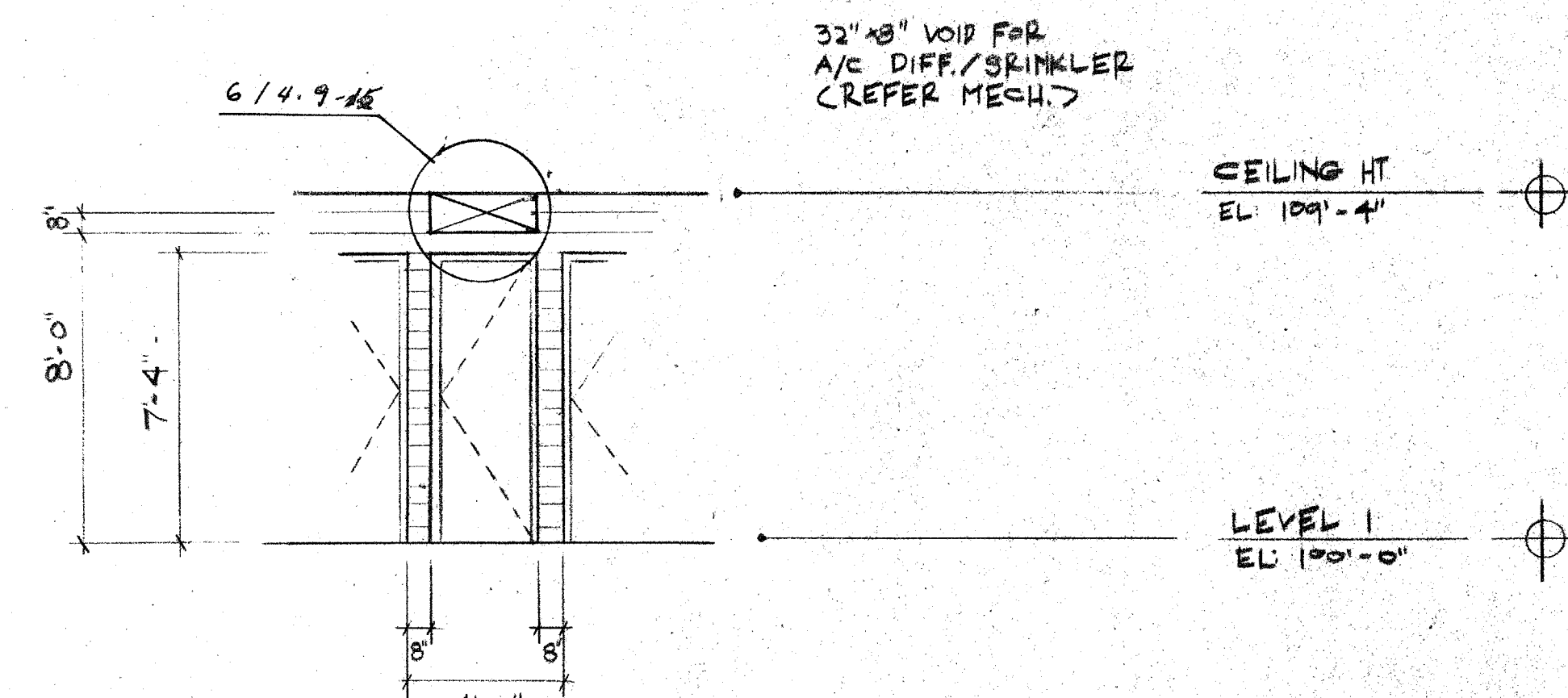
10 REHEARSAL ROOM SOUTH ELEVATION
1/4" = 1'-0"



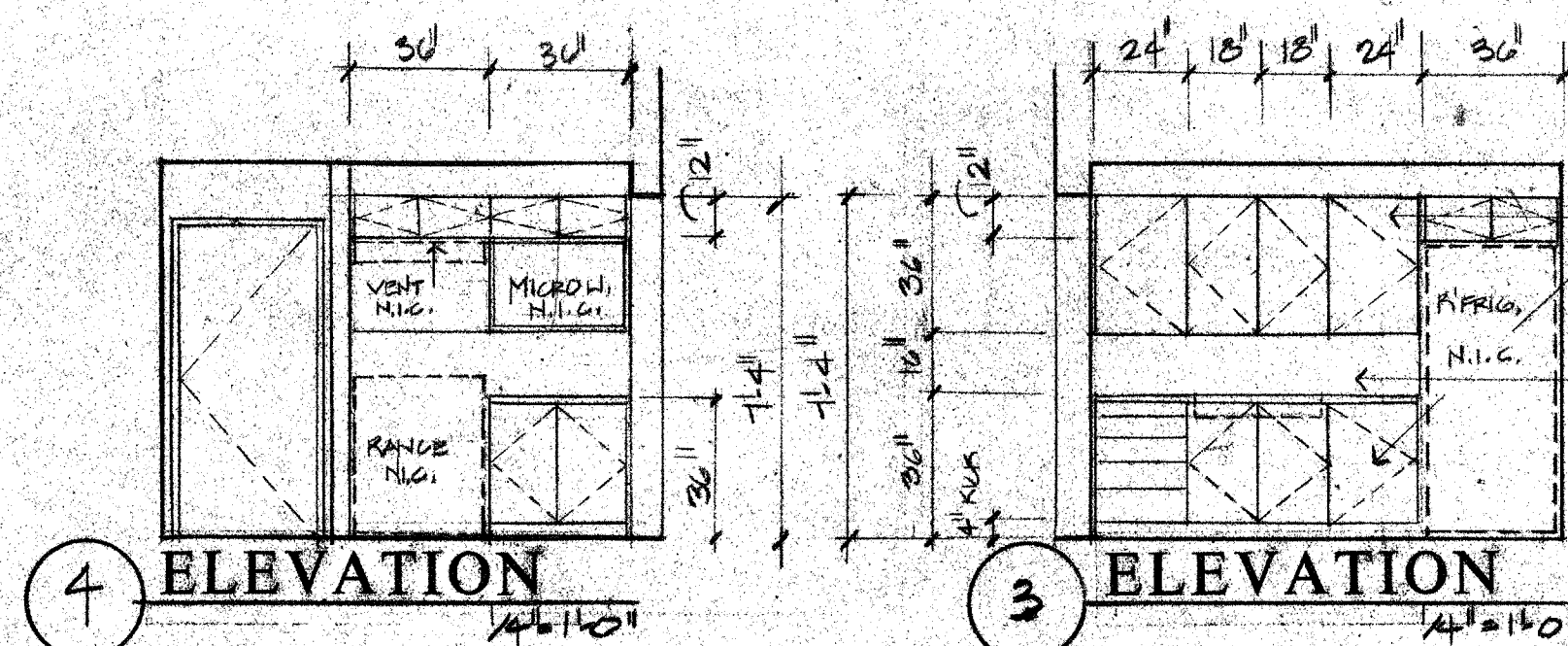
9 REHEARSAL ROOM EAST ELEVATION
1/4" = 1'-0"



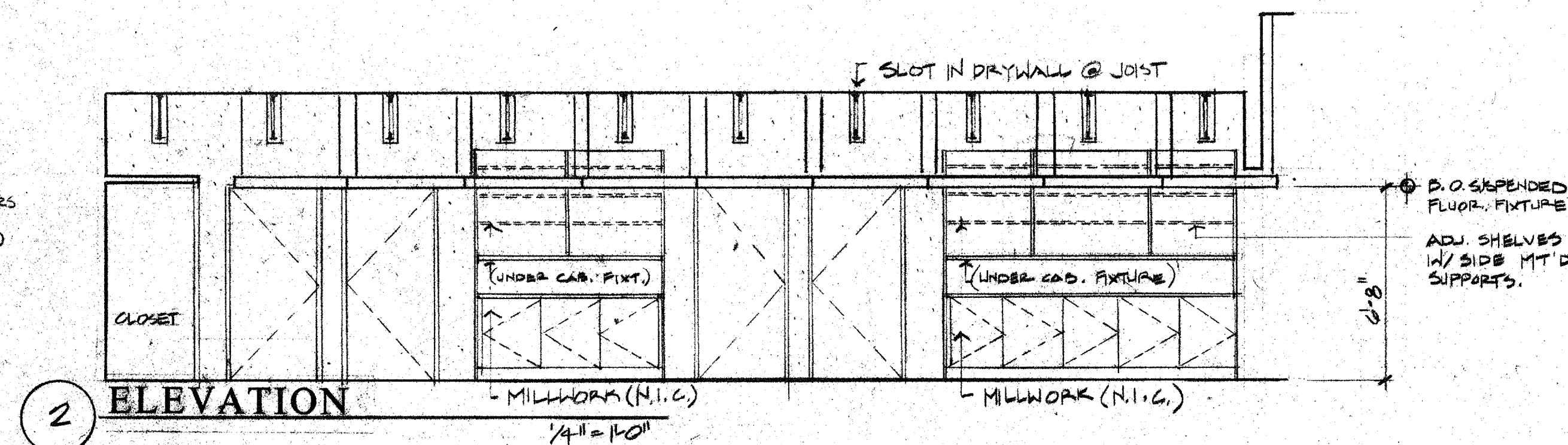
6 PARTIAL ELEVATION OF GALLERY WALL
LOOKING NORTH
1/4" = 1'-0"



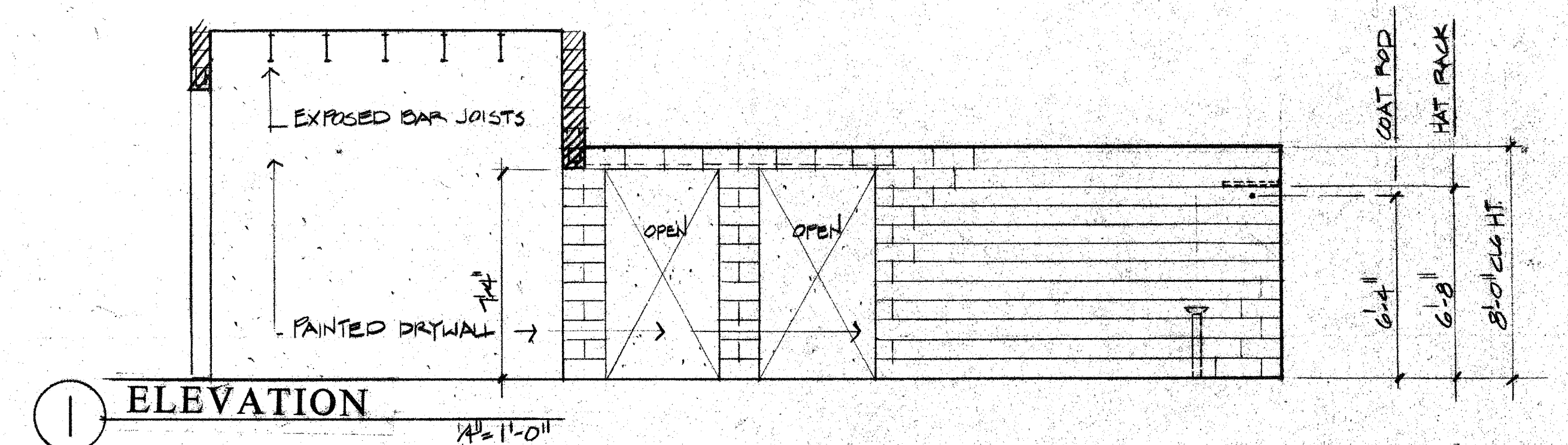
5 PARTIAL ELEVATION OF GALLERY WALL
LOOKING SOUTH
1/4" = 1'-0"



4 ELEVATION
3 ELEVATION
1/4" = 1'-0"



2 ELEVATION
1/4" = 1'-0"



1 ELEVATION
1/4" = 1'-0"



ACC ACT
ADDISON

OWNER	LANDSCAPE	STRUCTURAL	HISTORIAN	Issue	Category	Subcategory	Sheet
Town of Addison	The Kallala Group 317-76-1417	Ellis Tower 214-387-8333	Alan Mason 214-659-7182	ISSUE FOR BID 8-17-90	4	7	12
ARCHITECT	THEATRE CONSULTANT	M.E.P.	LIGHTING				
Cunningham Architects 2700 Fairmont Dallas, Texas 75201 214-855-5272	Theatre Projects 203-431-3849	M.E.P. Systems 214-754-4741	Parade Hall Hillman 214-823-6542				
INTERIORS	GRAPHICS						
CRSS 713-552-2000	Northward Design 214-954-9328	CMR Kurtz & Associates 214-680-3322					

T