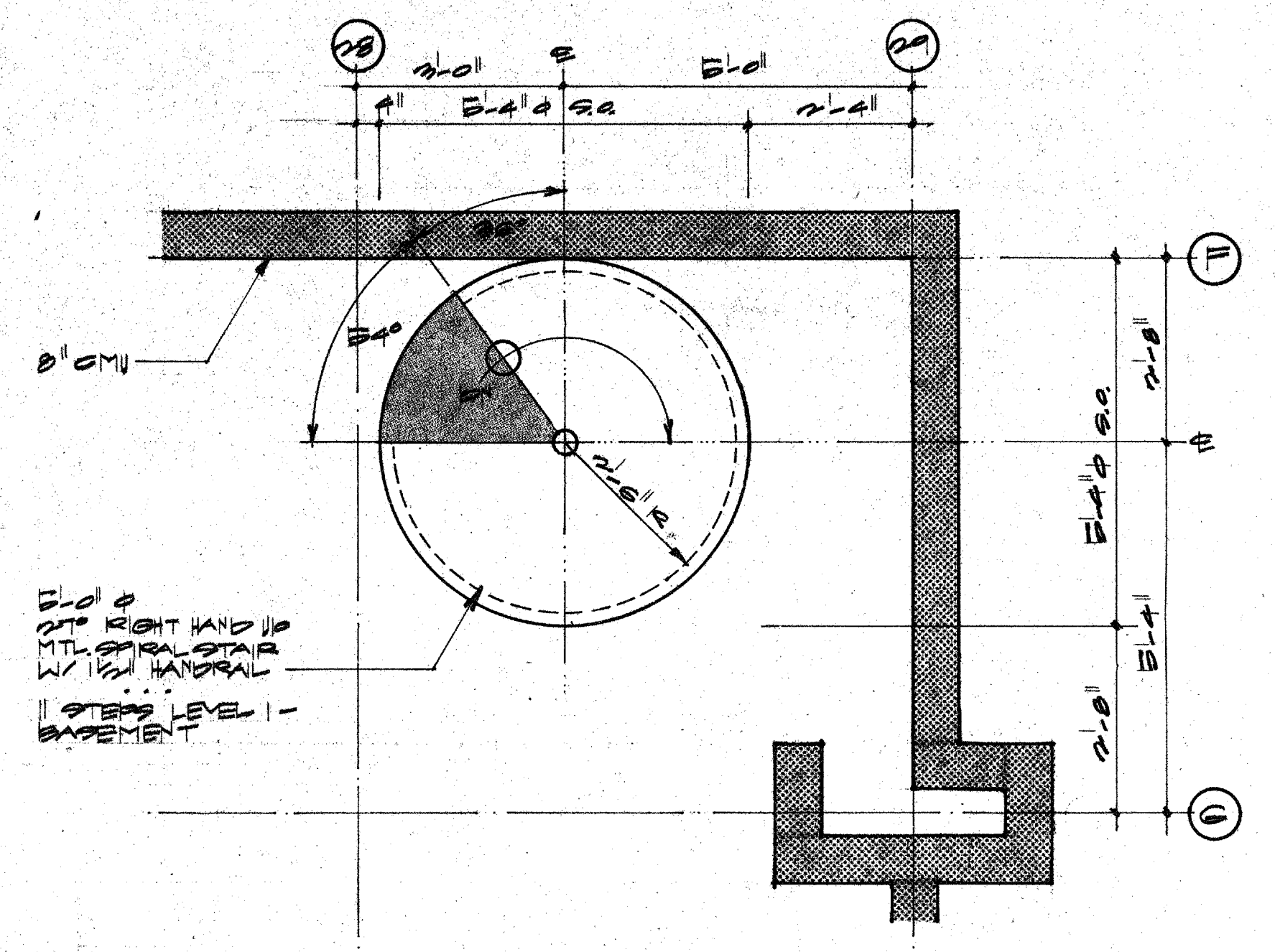
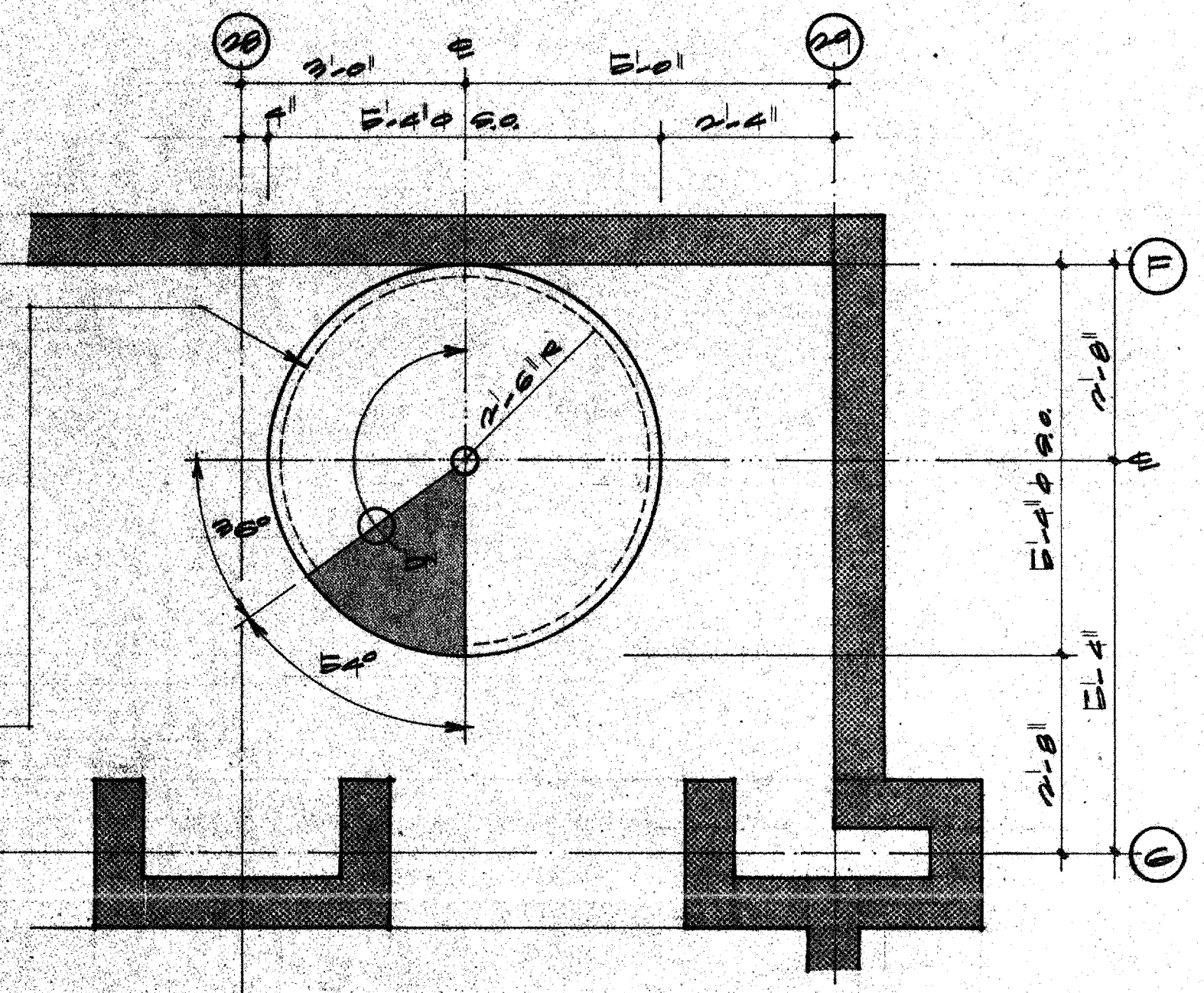


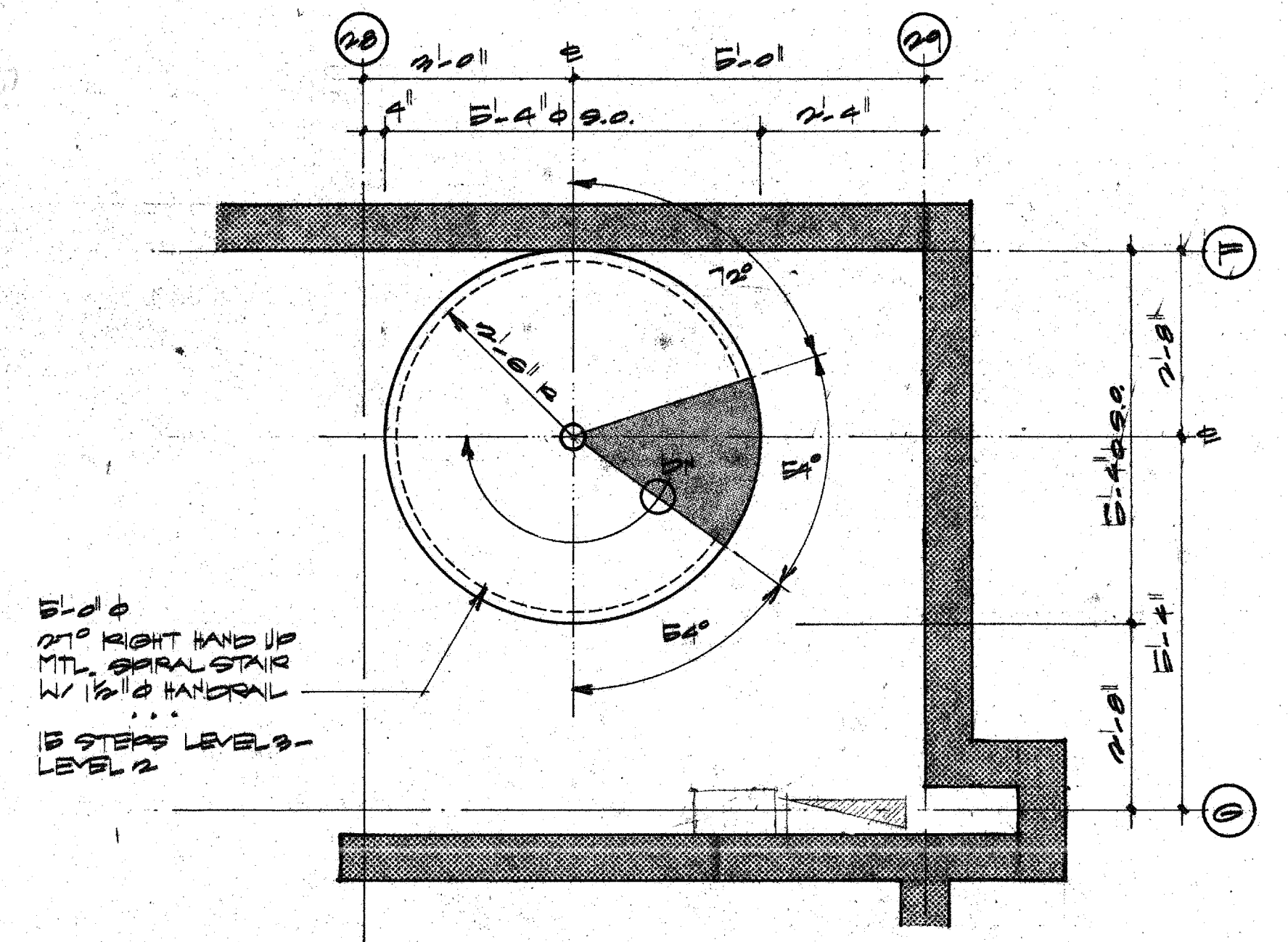
7 STAIR PLAN
Basement
1/2" = 1'-0"



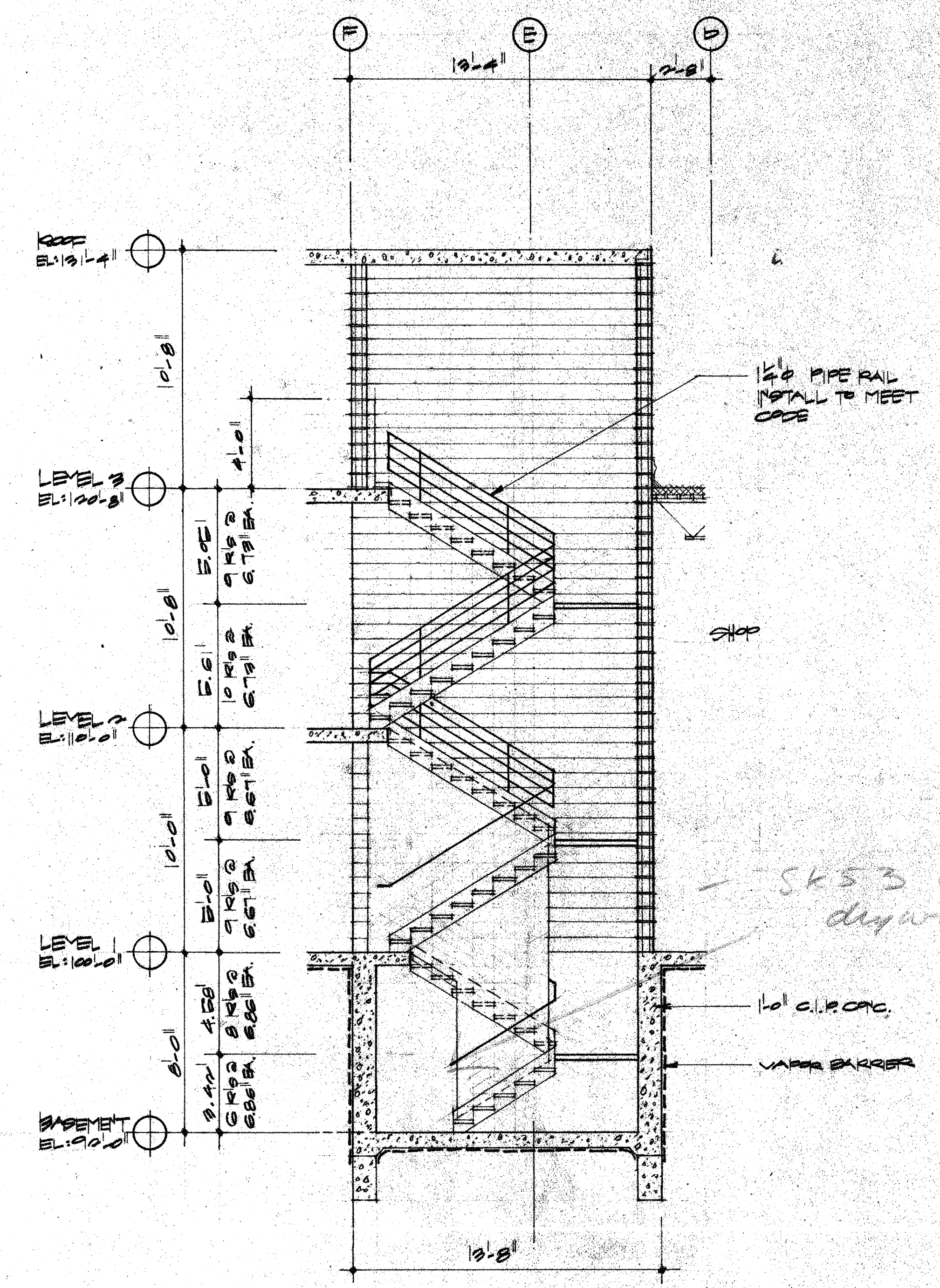
8 STAIR PLAN
LEVEL 1
1/2" = 1'-0"



9 STAIR PLAN
LEVEL 2
1/2" = 1'-0"



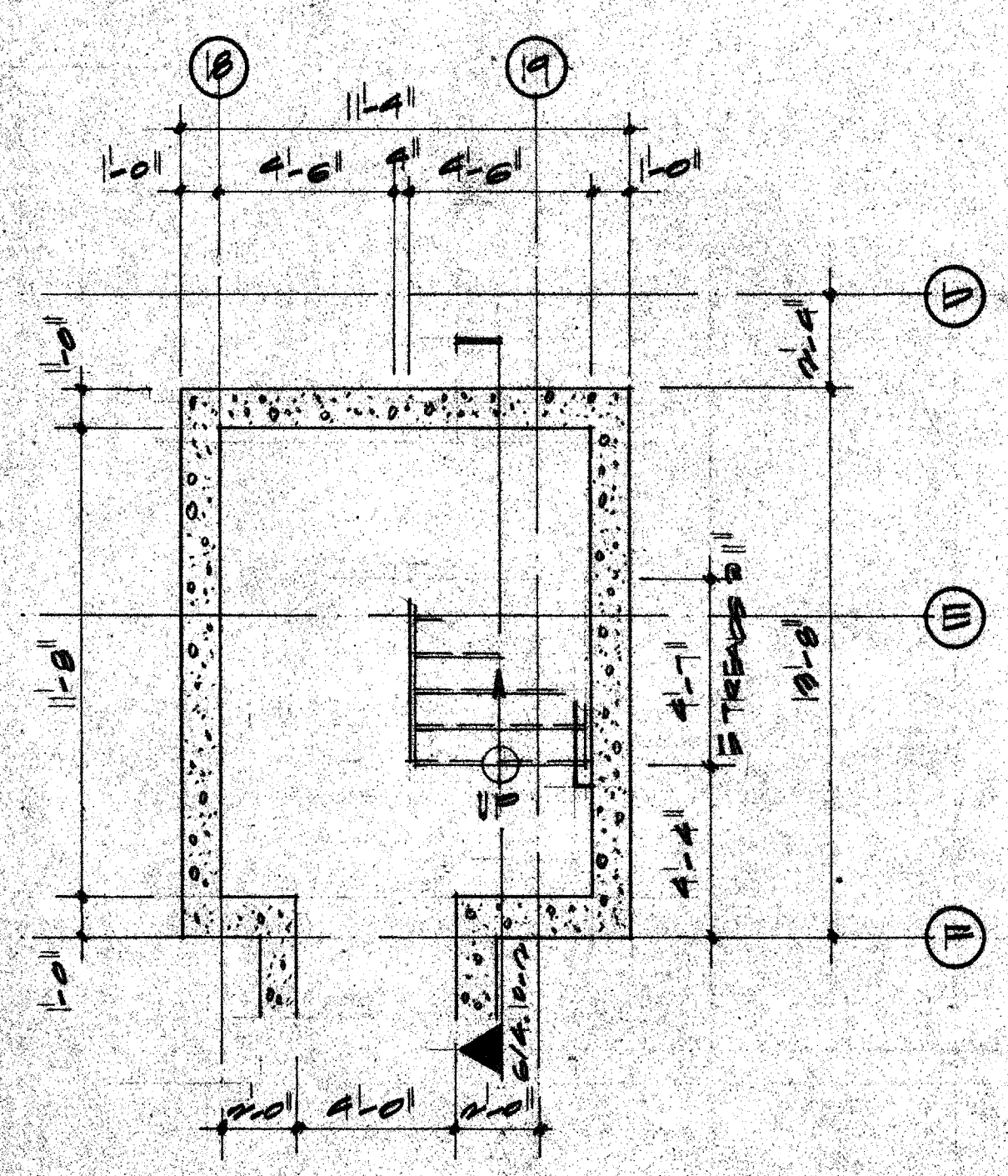
10 STAIR PLAN
LEVEL 3
1/2" = 1'-0"



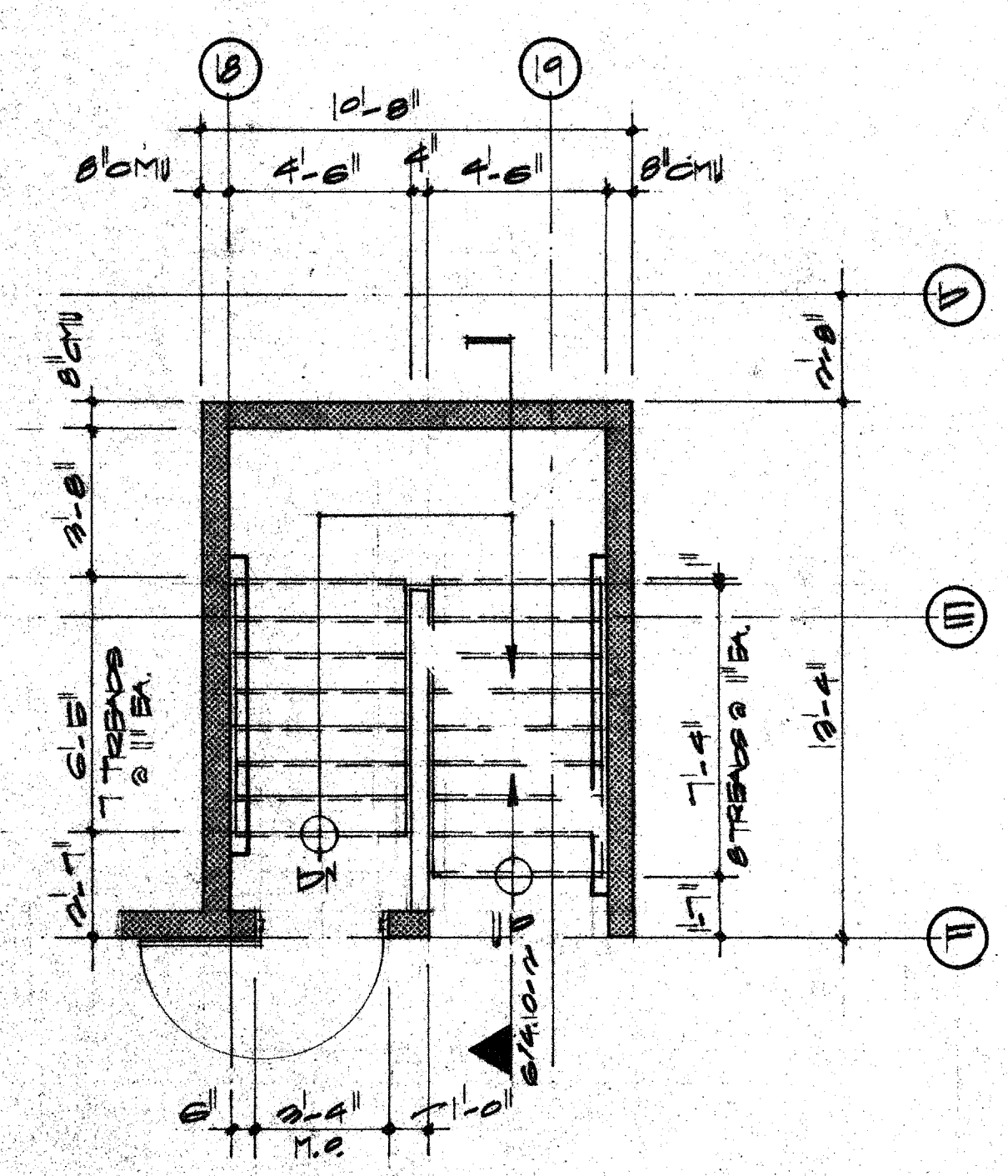
6 STAIR SECTION
1/2" = 1'-0"

*Change Overstair
Checked At All
Levels*

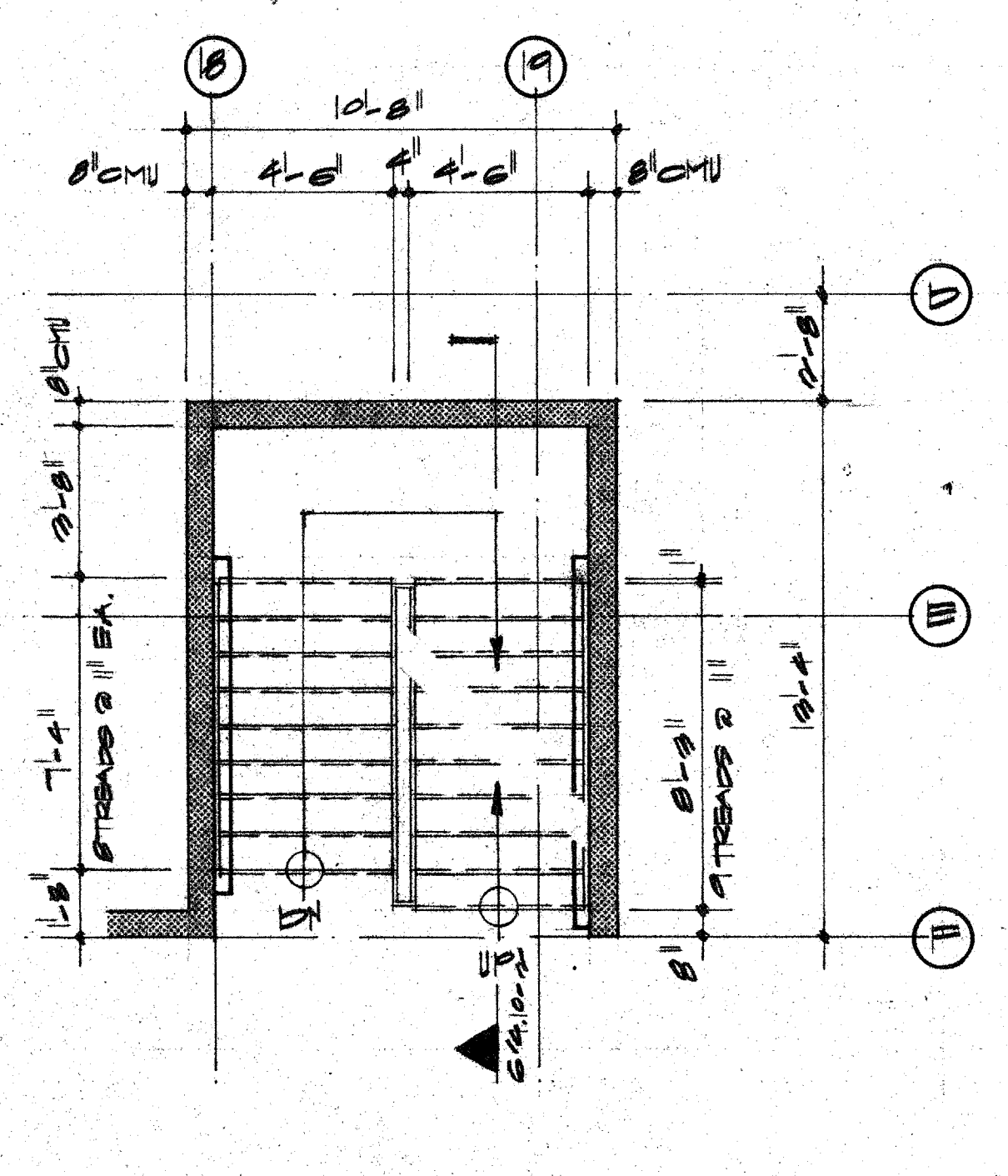
*SK53 Clarifier
drywall*



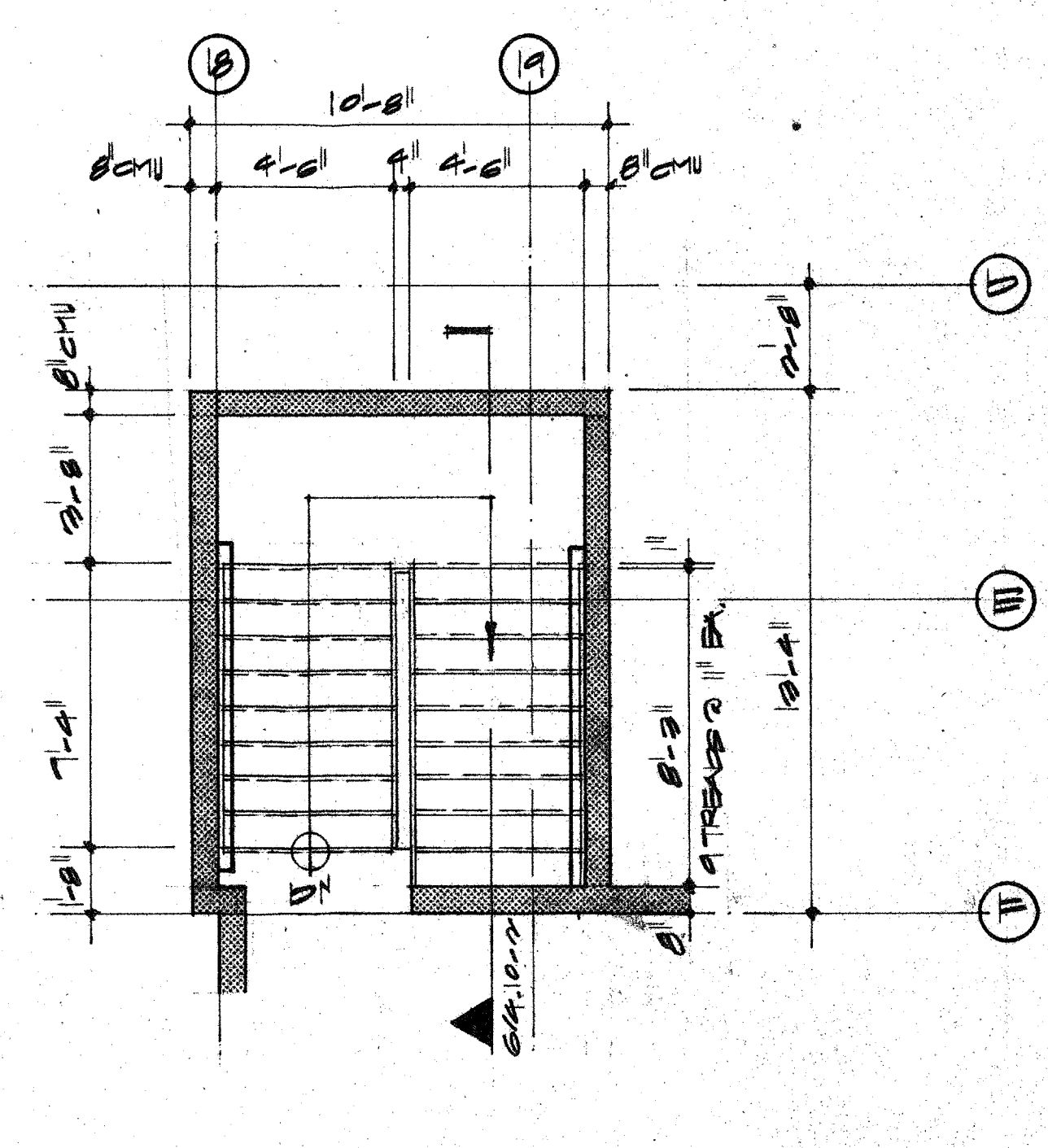
1 STAIR PLAN
Basement
1/2" = 1'-0"



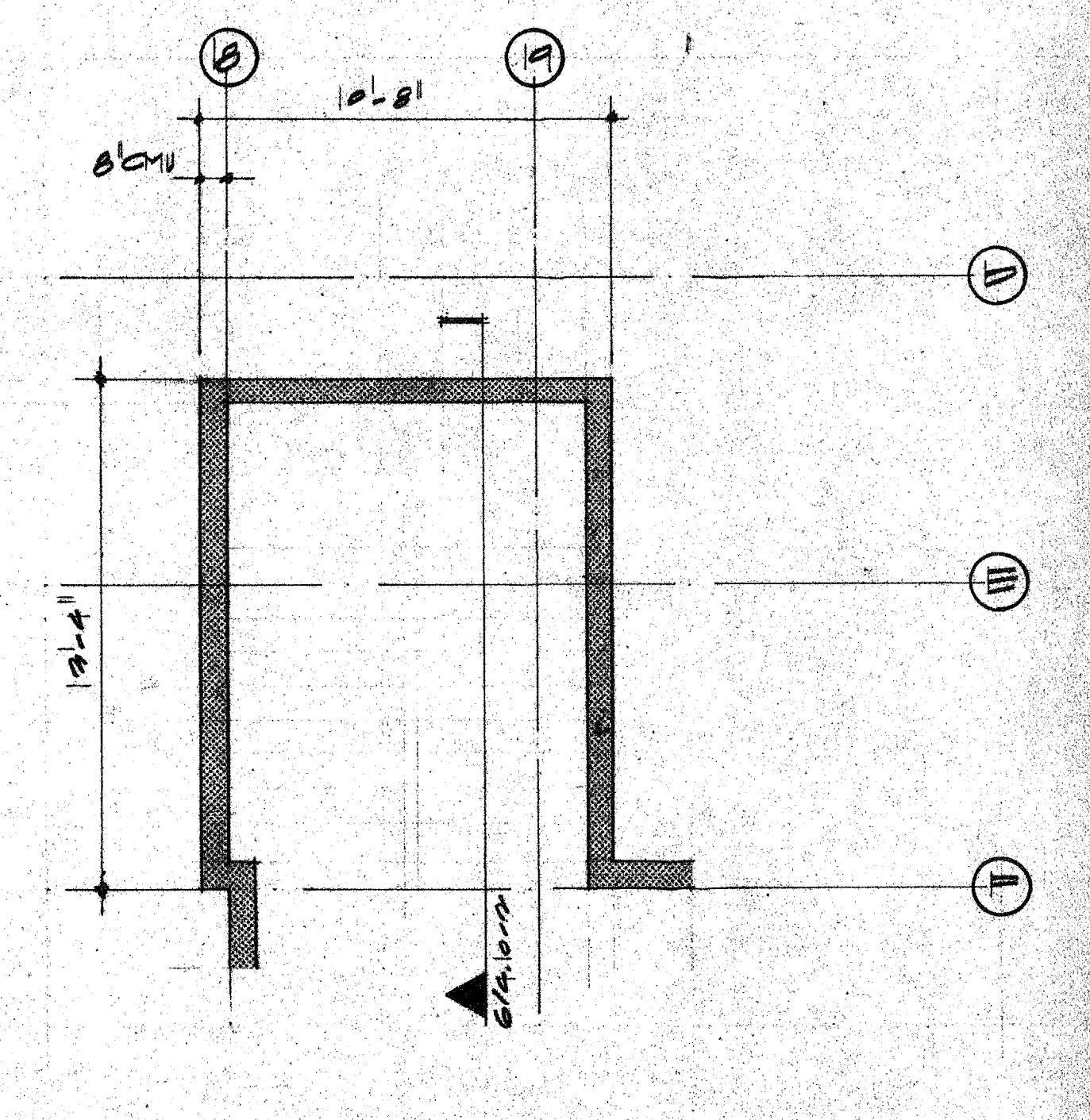
2 STAIR PLAN
LEVEL 1
1/2" = 1'-0"



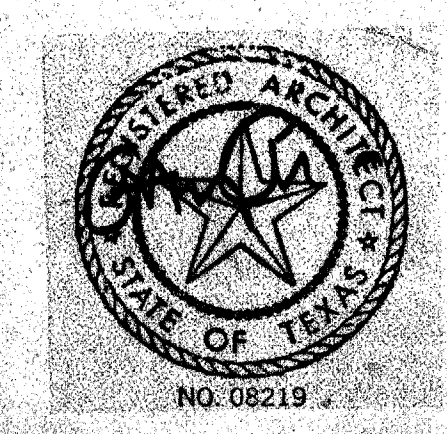
3 STAIR PLAN
LEVEL 2
1/2" = 1'-0"



4 STAIR PLAN
LEVEL 3
1/2" = 1'-0"



5 ROOF PLAN
1/2" = 1'-0"



ACC ACT
ADDISON

OWNER	LANDSCAPE	STRUCTURAL	HISTORIAN	Issue	Category	Subcategory	Sheet
Town of Addison The Kallens Group 377-76-447	THEATRE CONSULTANT Theatre Projects 203-481-3548 214-855-5272	ETHEC Tappin 214-367-8393 M.E.P. MEP Systems 214-754-4741 CIVIL Kurtz & Associates 214-486-3322	Alan Millson 214-681-7116 Pamela Hull Wilson 214-823-8542 GRAFFICS Notre-Dame Design 214-954-8176	ISSUE FOR BID 8-17-00	4	10	2

T