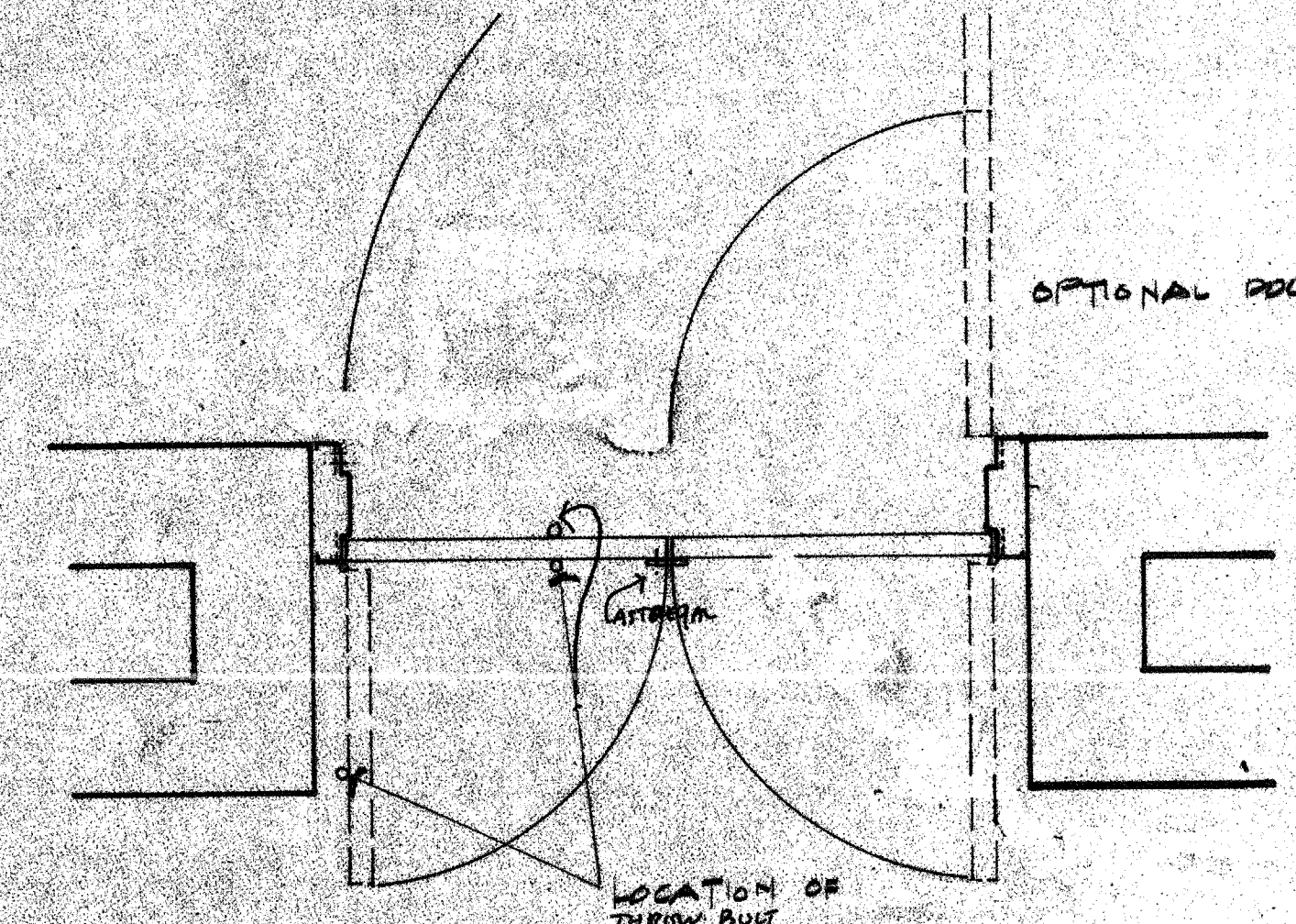
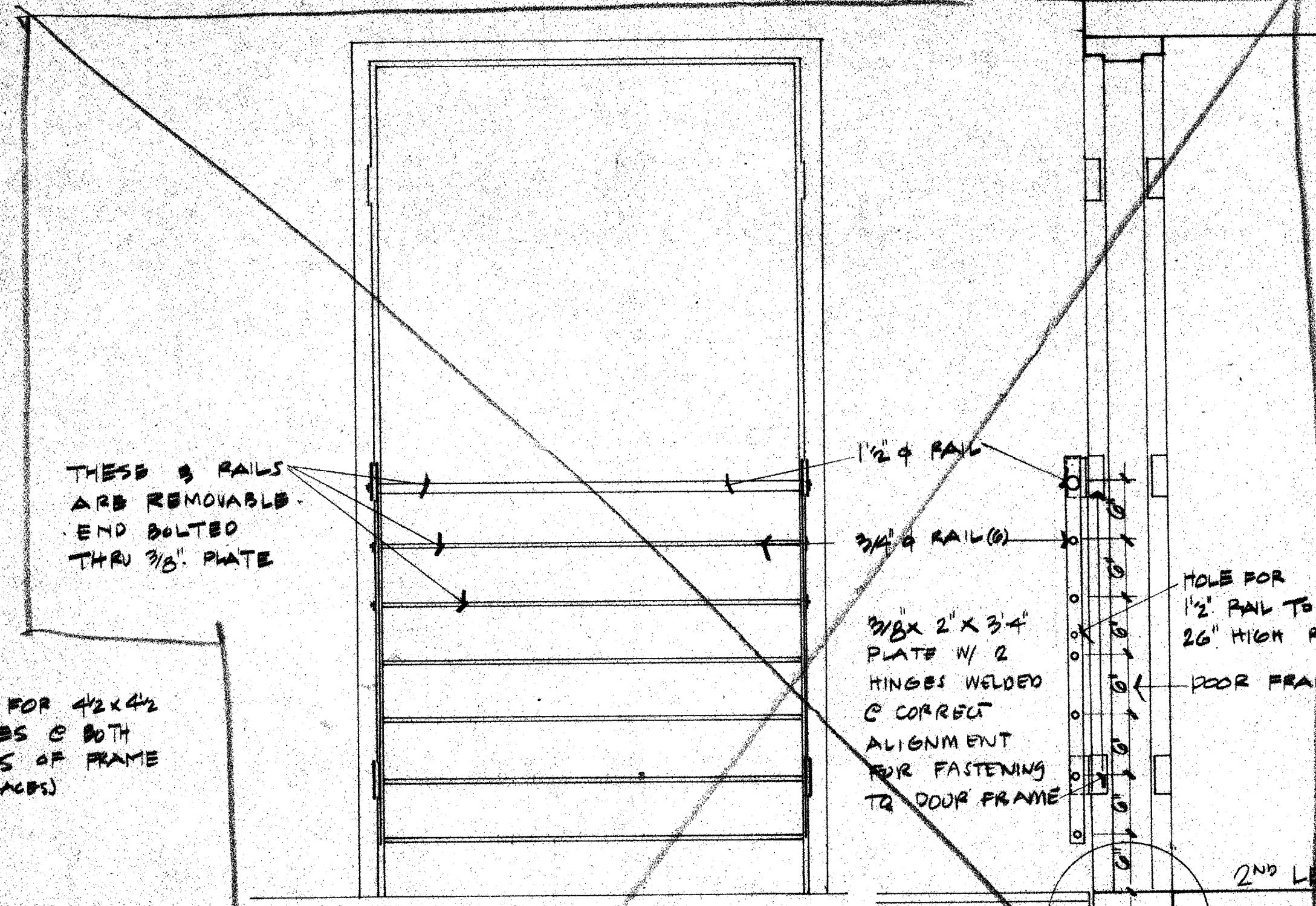


PREP FOR 4x4x4 HINGES @ BOTH SIDES OF FRAME (16 PAGES)

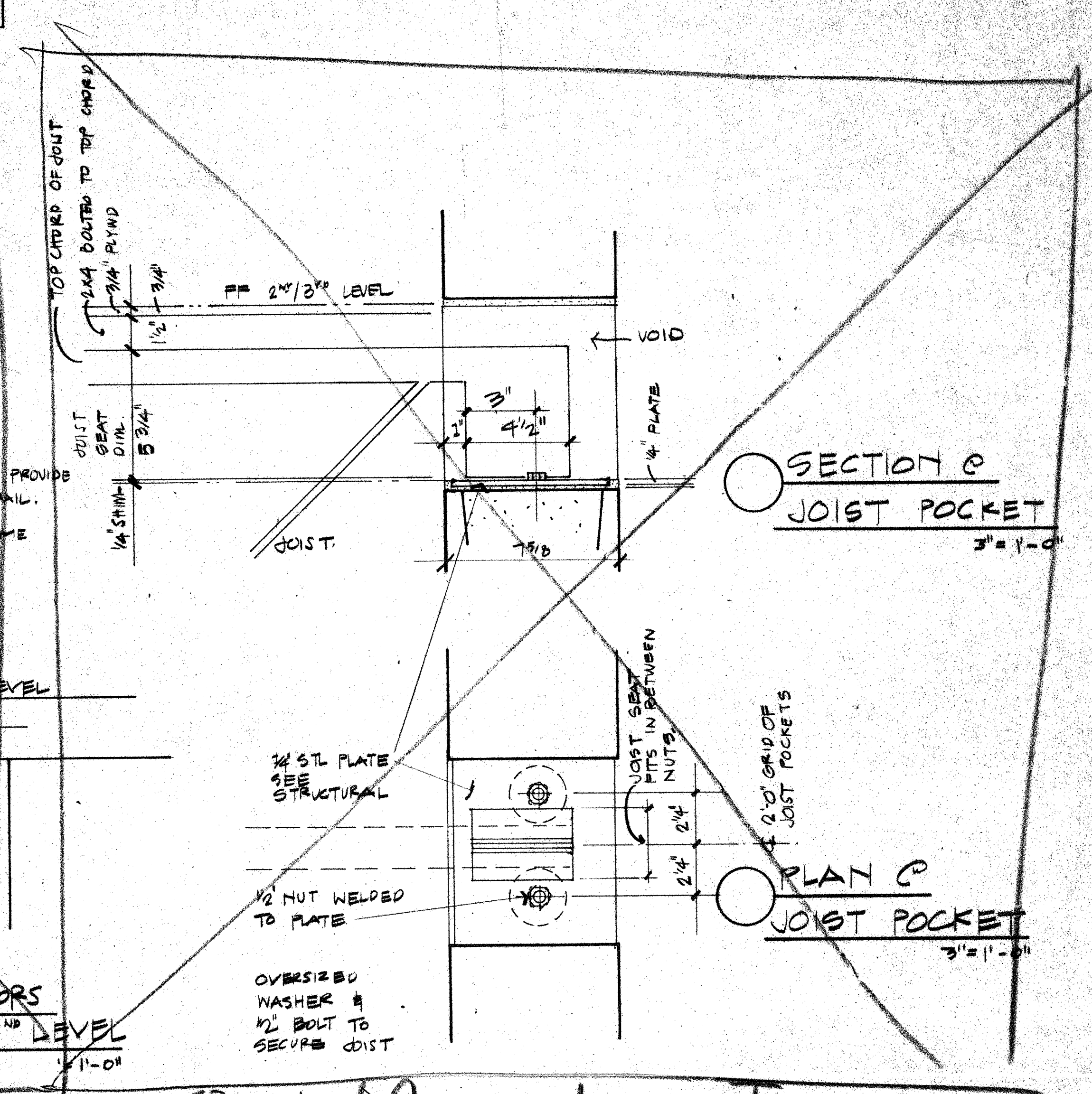


TYPICAL THEATRE DOOR PLAN 3/4" = 1'-0"



REMOVABLE RAIL @ DOORWAY @ THEATRE 1" = 1'-0"

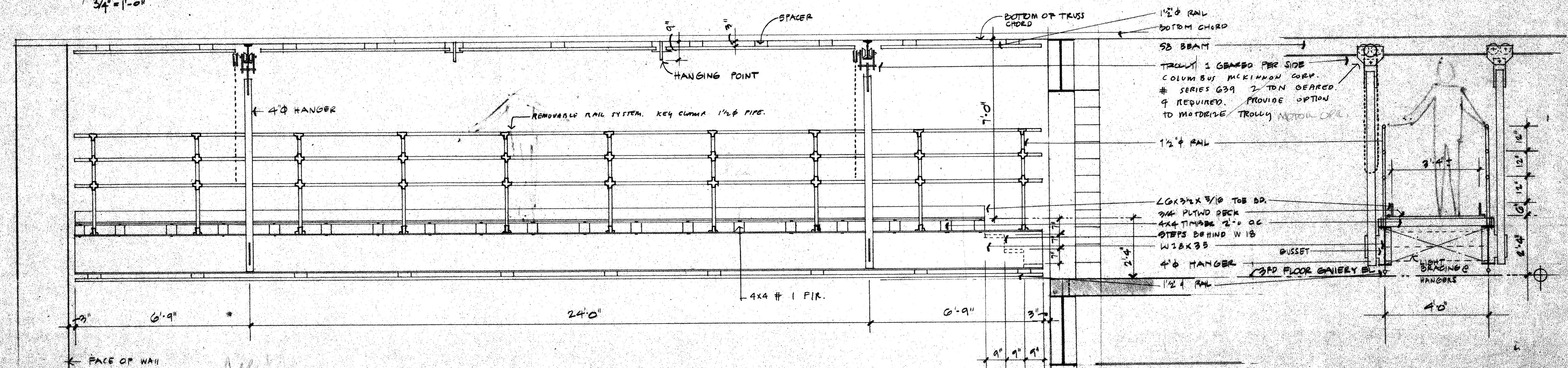
SECTION C THEATRE DOORS @ GALLERY 2ND LEVEL 1/2" = 1'-0"



SECTION C JOIST POCKET 3/8" = 1'-0"

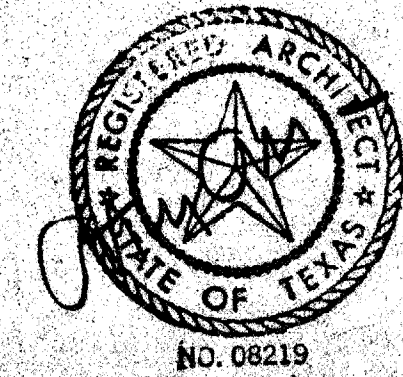
PLAN C JOIST POCKET 3/8" = 1'-0"

N. I. C. O M I T



ELEVATION OF ROLLING CATWALK 1/2" = 1'-0"

SECTION C ROLLING CATWALK 1/2" = 1'-0"



ACC ADDISON ACT

OWNER The Kellum Group 307-776-1417	LANDSCAPE The Kellum Group 307-776-1417	STRUCTURE Ellor Turner 214-387-8393	MECHANICAL Ellor Turner 214-387-8393	ISSUE FOR BID 8-17-00
ARCHITECT Cunningham Architects 2700 Fairmount Dallas, Texas 75201 214-955-5272	THEATRE CONSULTANT Theatre Projects 203-431-3549	M.E.P. MEP Systems 214-754-4741	LIGHTING Parsons Hall Wilson 214-823-8542	4 9 18
INTERIORS CRSS 713-552-2000	CIVIL Kurtz & Associates 214-680-3322	GRAPHICS Northstad Design 214-854-9778		