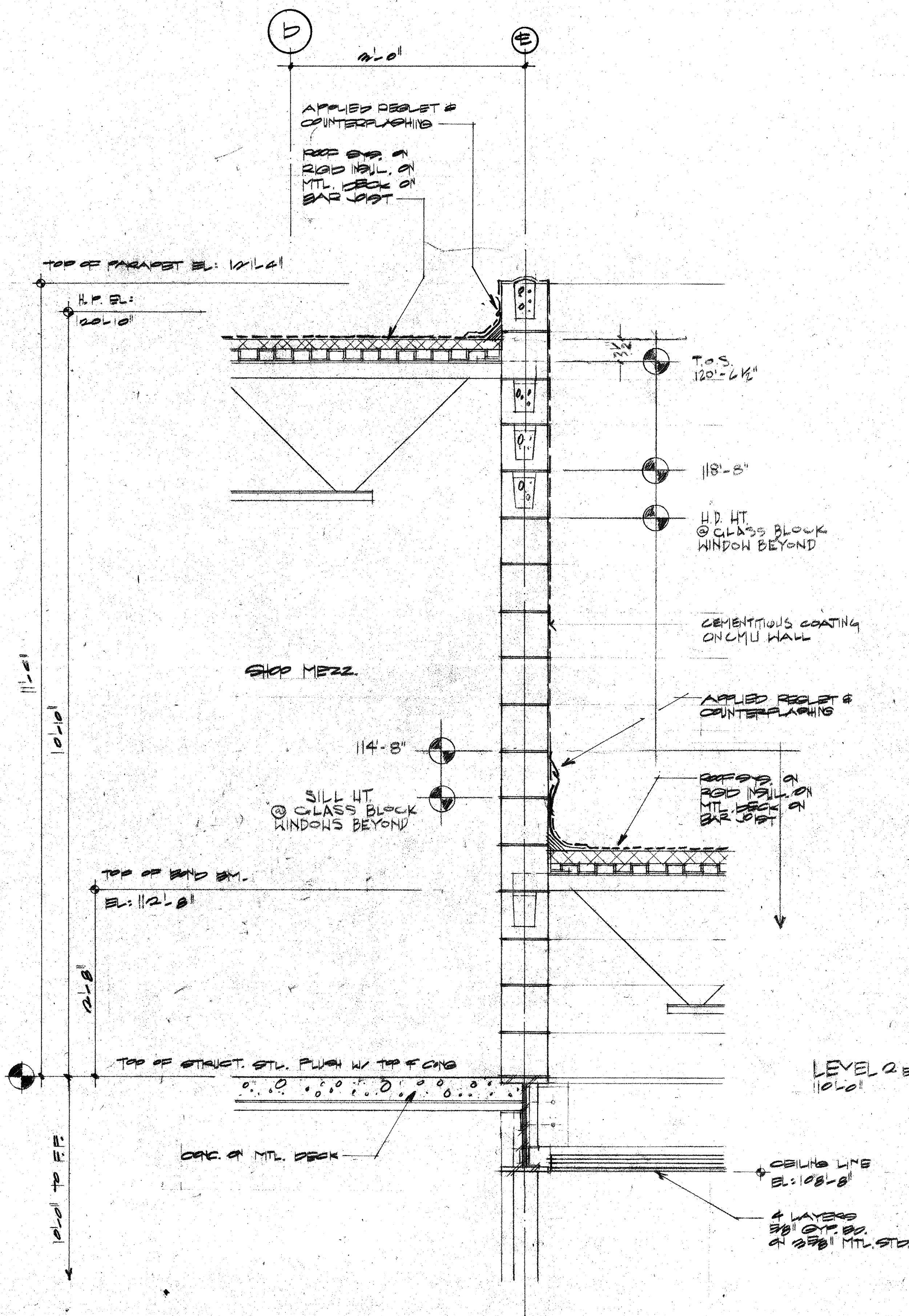
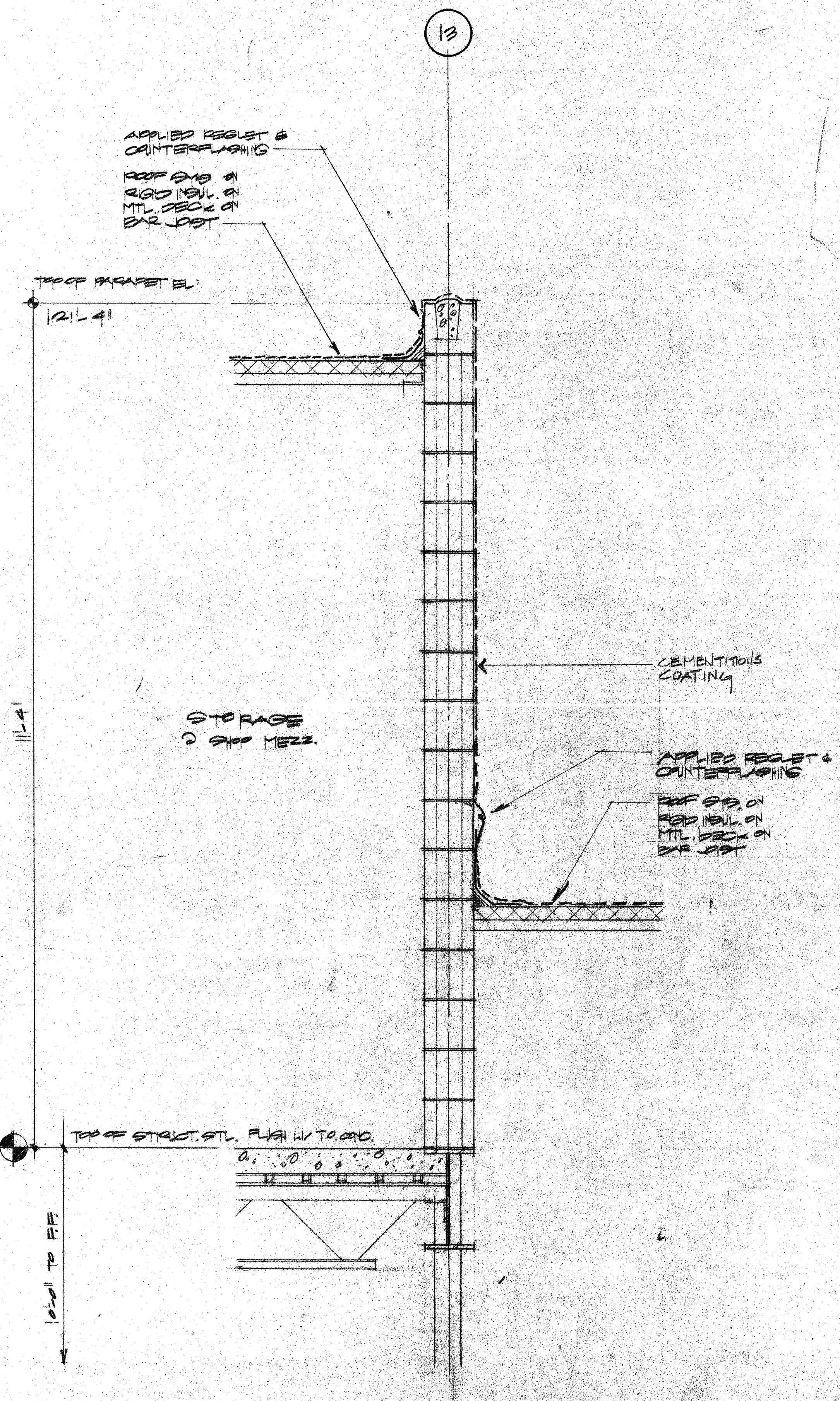


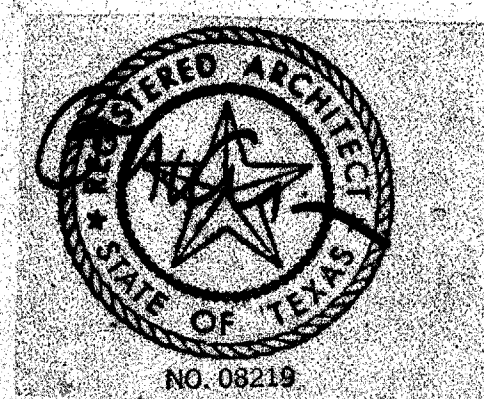
3 WALL SECTION
1" = 1'-0"



2 WALL SECTION
1" = 1'-0"



1 WALL SECTION
1" = 1'-0"



ACC ADDISON ACT

| | | | | | | | |
|---|--|--|--|-----------------------|----------|-------------|-------|
| OWNER The Kellam Group 31-776-907 | LANDSCAPE The Kellam Group 31-776-907 | STRUCTURAL Ellen Turner 214-387-9593 | HISTORICAL Alan Mason 214-691-7952 | Issue | Category | Subcategory | Sheet |
| ARCHITECT Cunningham Architects 2700 Fairmount Dallas, Texas 75201 214-855-5272 | THEATRE CONSULTANT Theatre Projects 204-401-3049 | M.E.P. MEP Systems 214-754-4741 | LIGHTING Pamela Hall Wilson 214-823-0542 | ISSUE FOR BID 8-17-90 | 4 | 8 | 19 |
| INTERIORS CRSS 710-562-2000 | CIVIL Kurtz & Associates 214-690-3322 | GRAPHICS Notwest Design 214-854-9078 | | | | | |