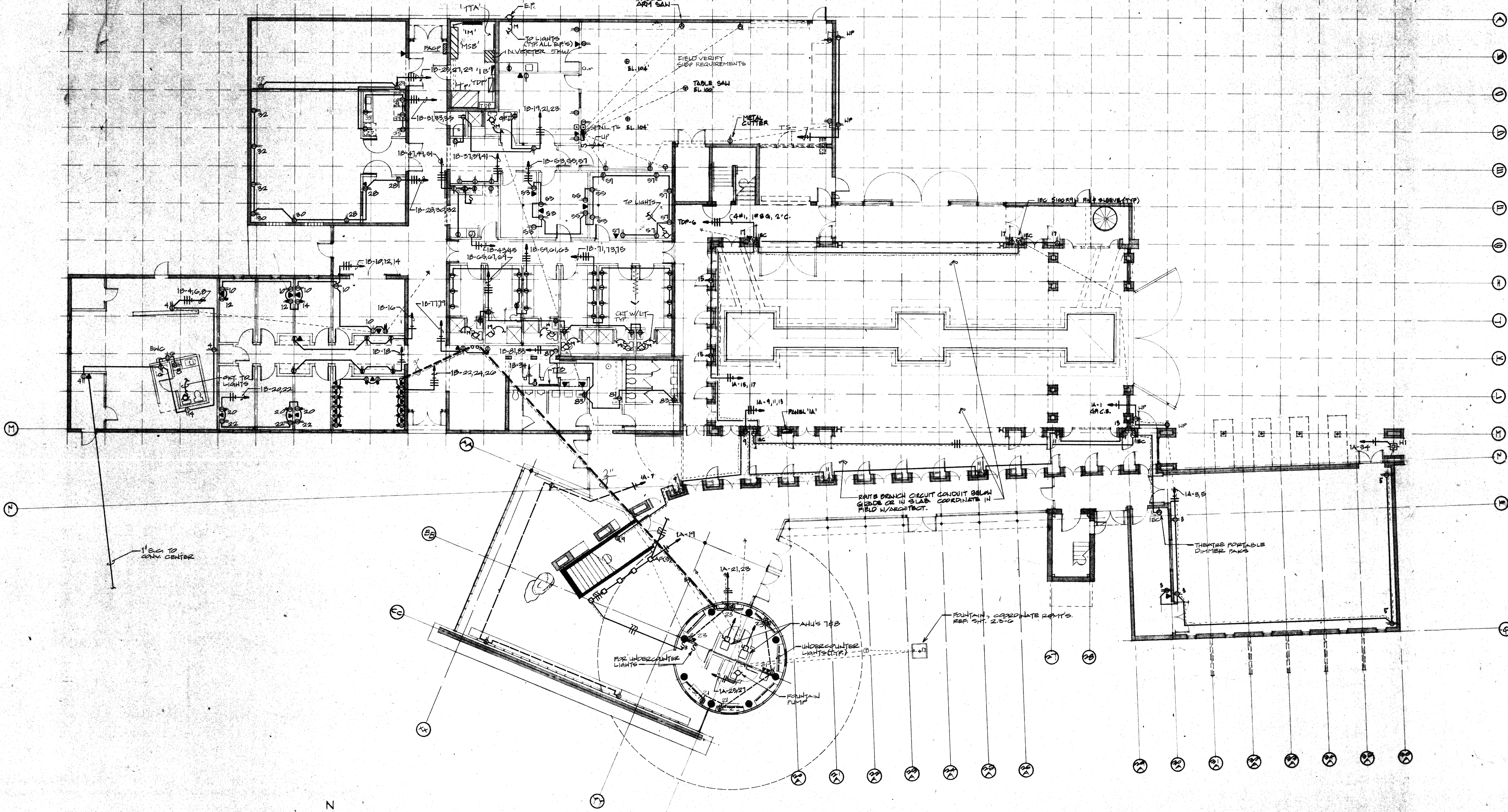


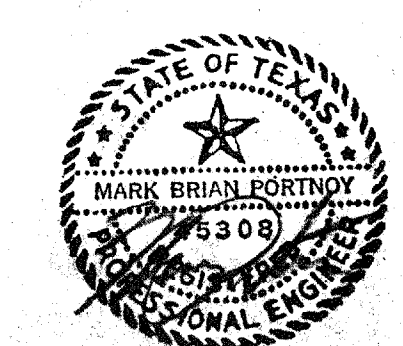
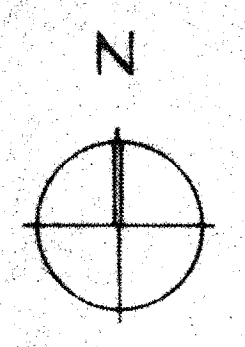
1 2 3 4 5 6 7 8 9 10 11 12 13 14 15 16 17 18 19 20 21 22 23 24 25 26 27 28 29 30 31 32



1 ELECTRICAL PLAN- LEVEL 1 THEATRE POWER

NOTE
SEE PULSED SCHED FOR CATING
TO MECH. EQUIP.

NOTE:
THEATRE WORK (SOUND, VIDEO AND
INTERCOMMUNICATIONS WORK, TERMINATION OF
THEATRE LIGHTING AND INSTRUMENTS, THEATRE
DIMMER WORK, STAGE RIGGING, STAGE
DRAPERIES) IS NOT PART OF THIS CONTRACT.
IT IS INCLUDED FOR INFORMATION AND
COORDINATION PURPOSES ONLY.



ACC • ACT
ADDISON

OWNER The Kollam Group 317-76-1417	LANDSCAPE Cunningham Architects 2700 Farmout Dallas, Texas 75201 214-855-5272	STRUCTURAL Elisor Tanner 214-387-8383	HISTORIAN Alan Mason 214-691-7822	Issue ISSUE FOR BID 8-17-90	Category 8	Subcategory 2	Sheet 8
MEP Theatre Projects 203-431-3949 214-855-5272	INTERIORS CRSS 713-562-2000	M.E.P. MEP Systems 214-754-4769	LIGHTING Panels Hull Wilson 214-823-8642	GRAPHICS Mottestad Design 214-854-8778			