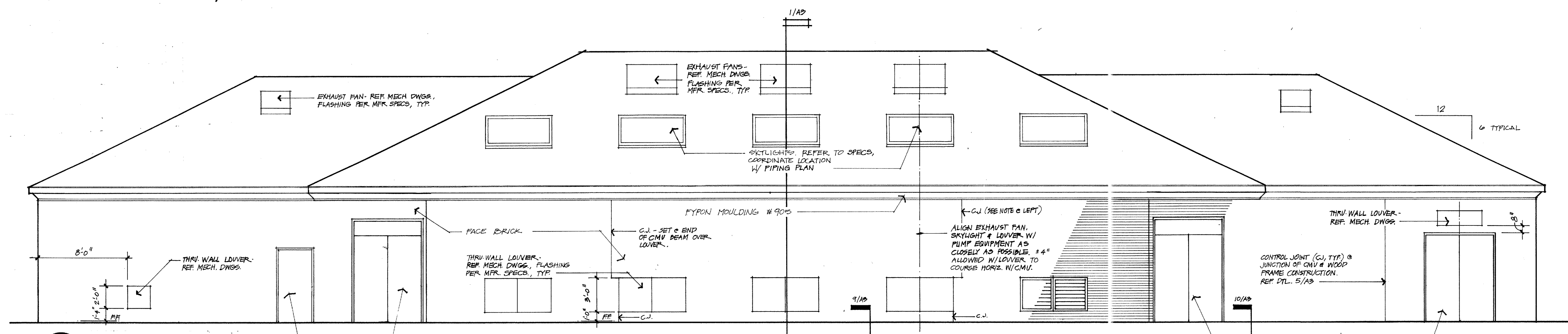
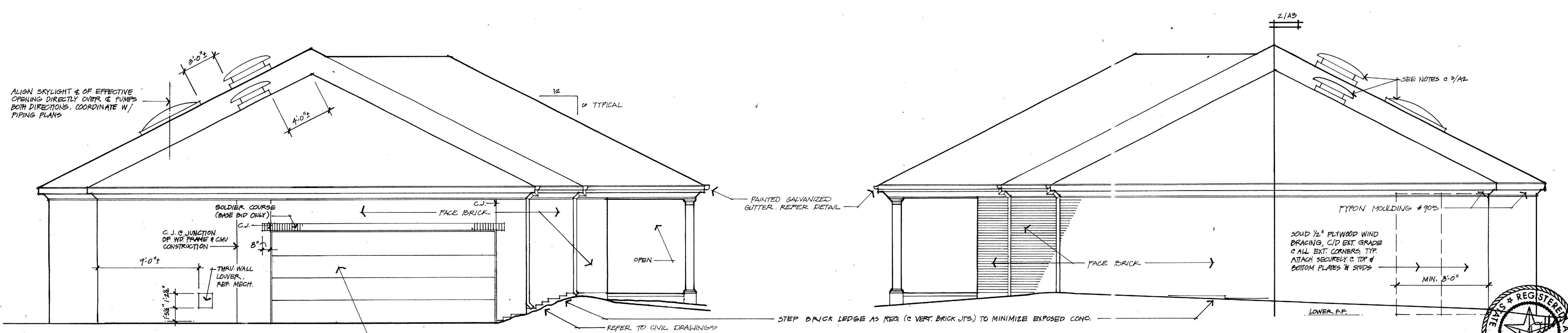


1 SOUTH ELEVATION
3/16" = 1'-0"



2 NORTH ELEVATION
3/16" = 1'-0"



3 EAST ELEVATION
3/16" = 1'-0"

4 WEST ELEVATION
3/16" = 1'-0"



No.	Revision	By	Date
TOWN OF ADDISON DALLAS COUNTY, TEXAS CELESTIAL ROAD PUMP STATION			
Architectural Consultants:		EXTERIOR ELEVATIONS	
DILLARD ARCHITECTS INC.			
GINN, INC. Consulting Engineers Dallas, Texas			
Designed -	Drawn - D.A.D.	Date - JANUARY, 1987	Job No. - 217
Approved -	Checked -	Scale -	Sheet A2 of