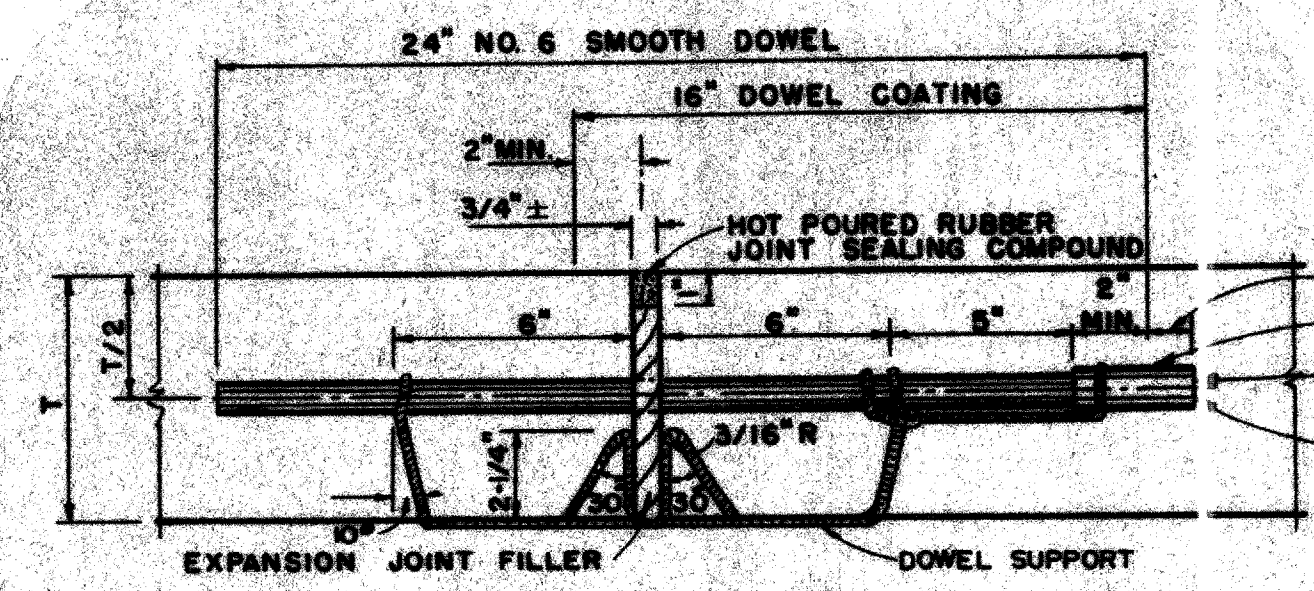


PAVEMENT BARS TO BE BENT DOWN INTO HEADER. HEADER AND PAVEMENT TO BE MONOLITHIC.

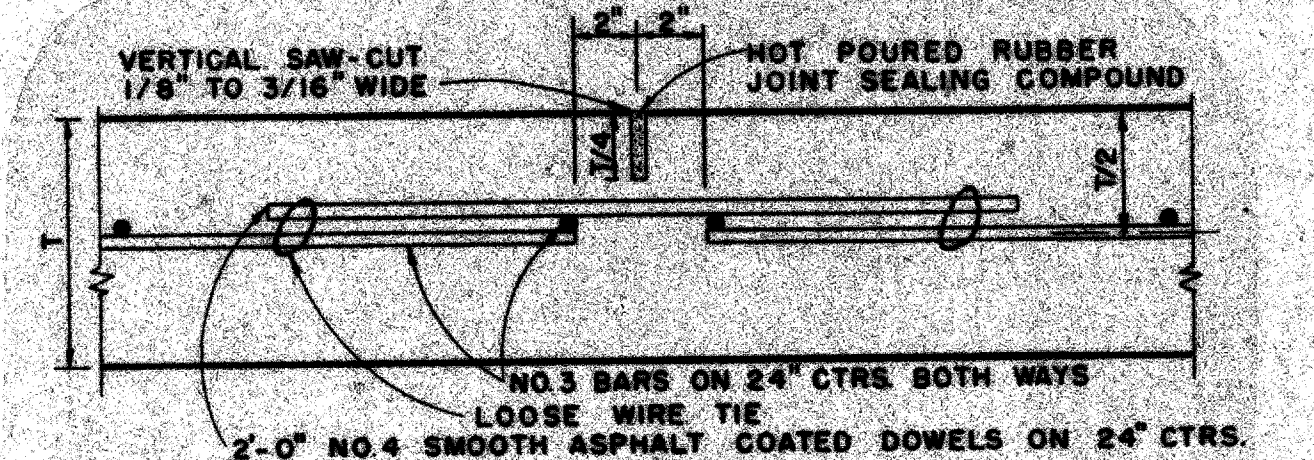
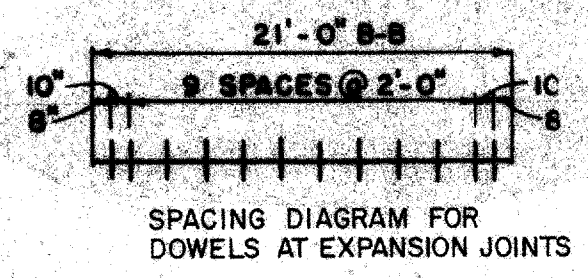
STREET HEADER

N.T.S.



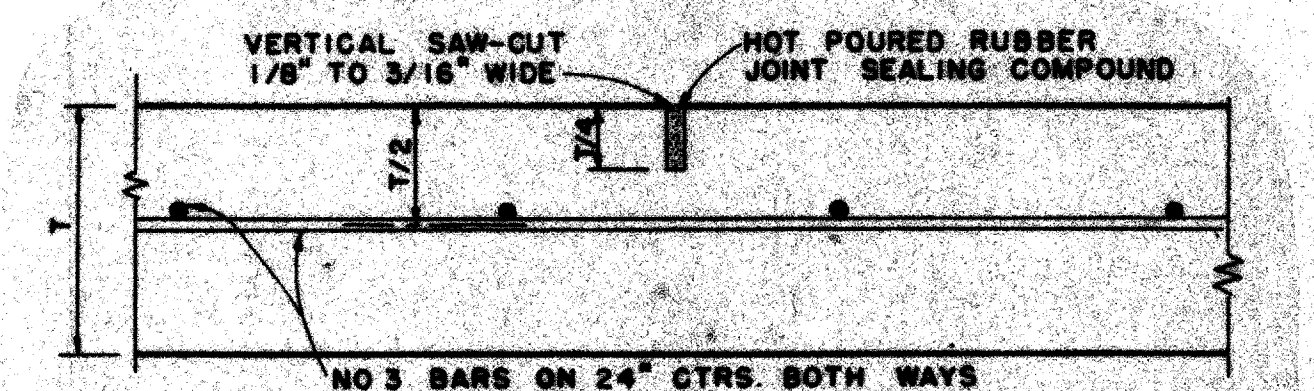
TRANSVERSE EXPANSION JOINT

IDENTICAL FOR STREETS & ALLEYS
N.T.S.



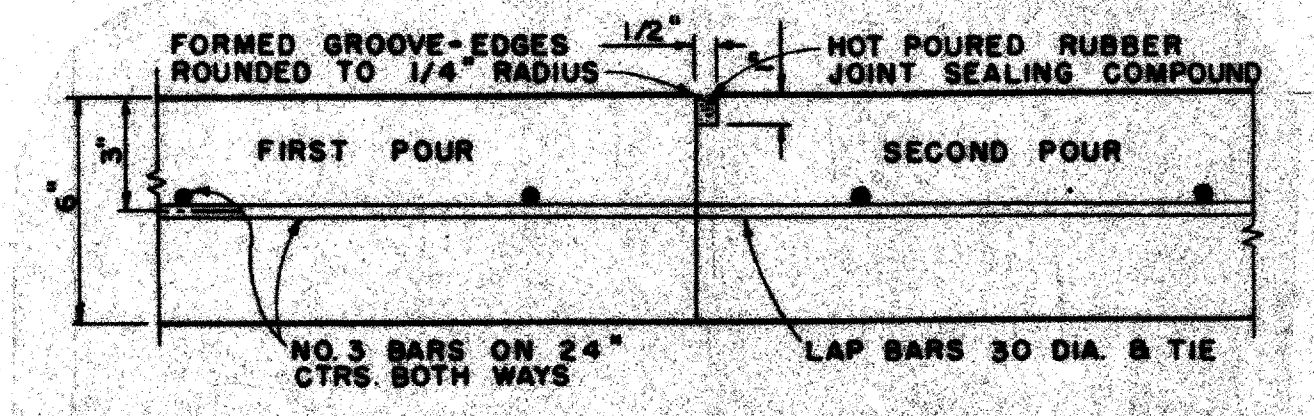
TRANSVERSE CONTRACTION JOINT

IDENTICAL FOR STREETS AND ALLEYS EXCEPT ALLEY LONGITUDINAL REINFORCING BARS.
N.T.S.



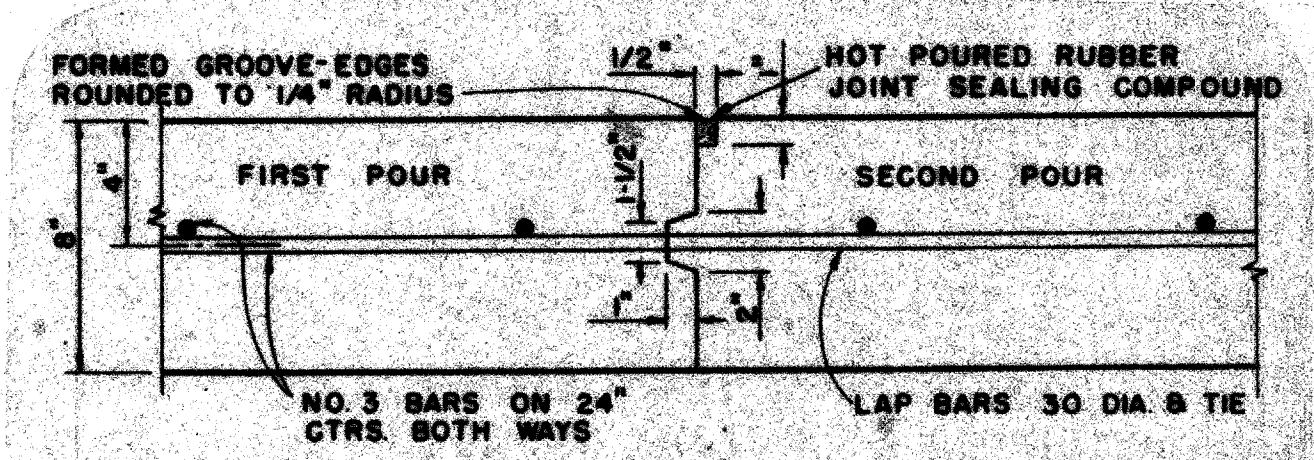
SAWED DUMMY JOINT

IDENTICAL FOR STREETS AND ALLEYS EXCEPT ALLEY LONGITUDINAL REINFORCING BARS.
N.T.S.



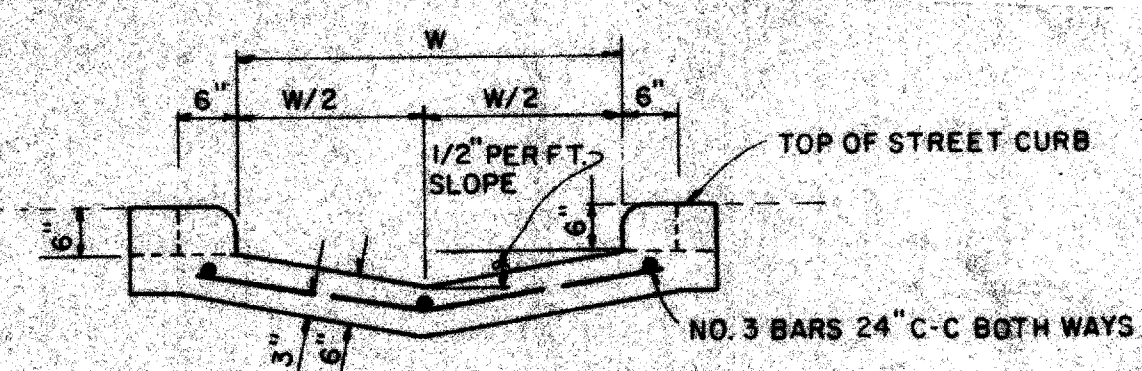
CONSTRUCTION JOINT

FOR 6" THICKNESS PAVEMENT OR BASE
IDENTICAL FOR STREETS AND ALLEYS EXCEPT ALLEY LONGITUDINAL REINFORCING BARS.
N.T.S.

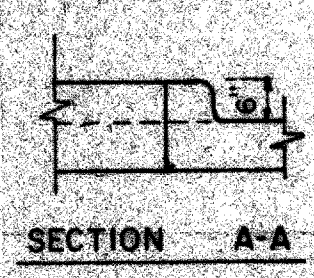


CONSTRUCTION JOINT

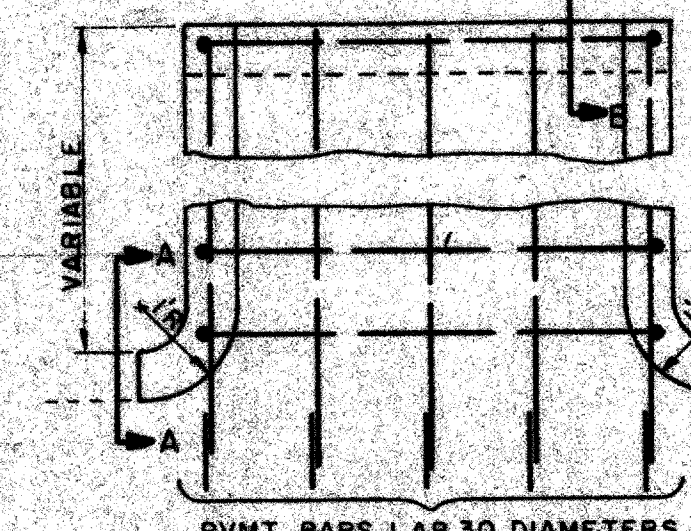
FOR 6" THICKNESS PAVEMENT OR BASE
N.T.S.



SECTION AT CURB FACE



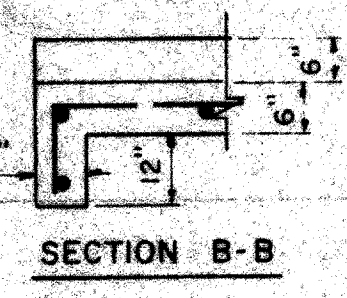
SECTION A-A



PLAN

FLUME

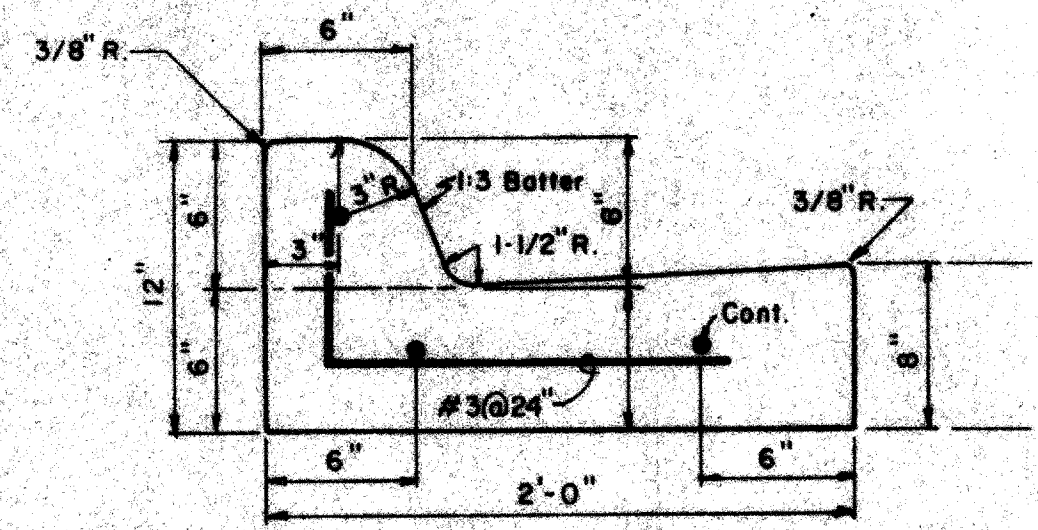
N.T.S.



SECTION B-B

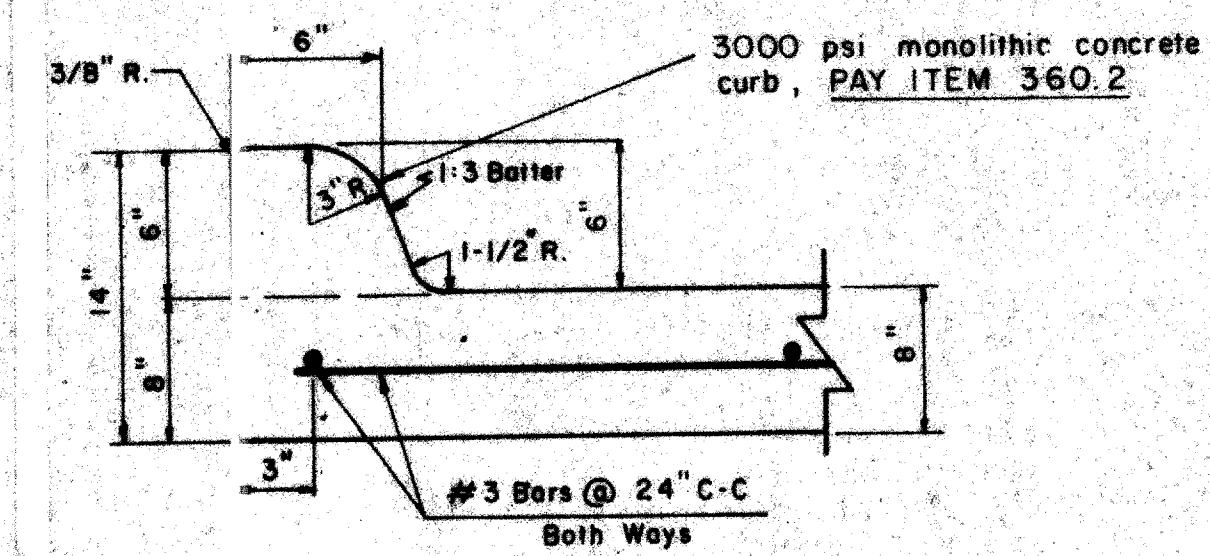
FACE OF STREET CURB

PVMT. BARS LAP 30 DIAMETERS



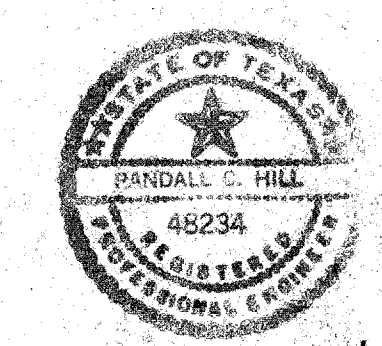
SEPARATE CURB & GUTTER

PAY ITEM . 530.1
REINFORCEMENT SHALL BE No. 5 BARS
N.T.S.



6" INTEGRAL CURB & GUTTER DETAIL

N.T.S.



Randall C. Hill
2-19-87

No.	Revision	By	Date
TOWN OF ADDISON DALLAS COUNTY, TEXAS			
CELESTIAL ROAD PUMP STATION			
MISC. DETAILS - PAVING			
GINN, INC. Consulting Engineers Dallas, Texas			
Designed - R.C.H.	Drawn - B.S.	Date - JAN., 1987	Job No. - 217
Approved - HWG	Checked - G.A.F.	Scale - AS SHOWN	Sheet - C8