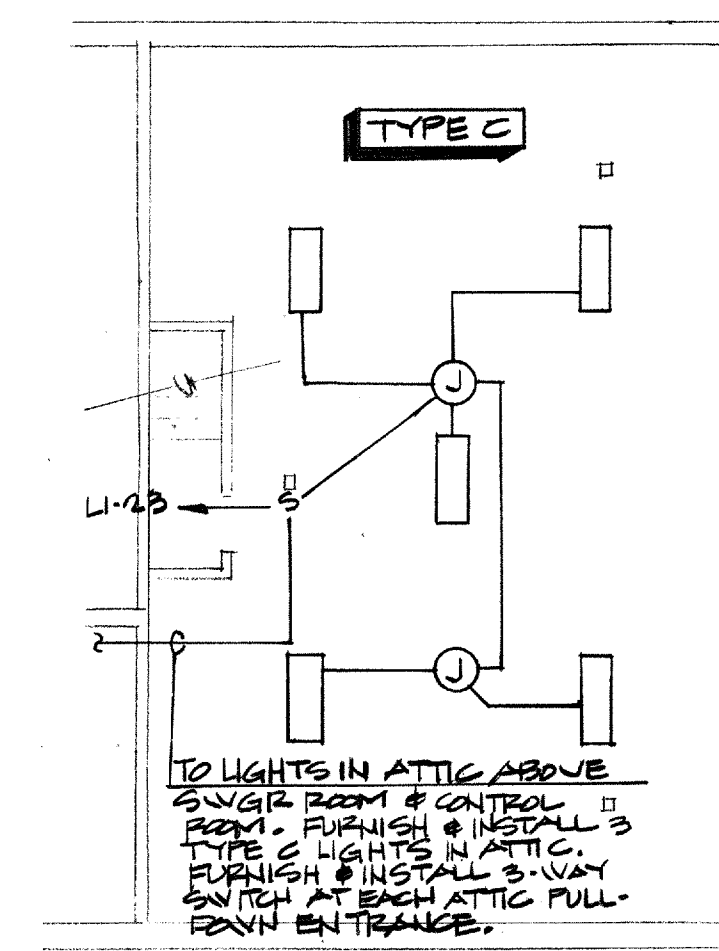
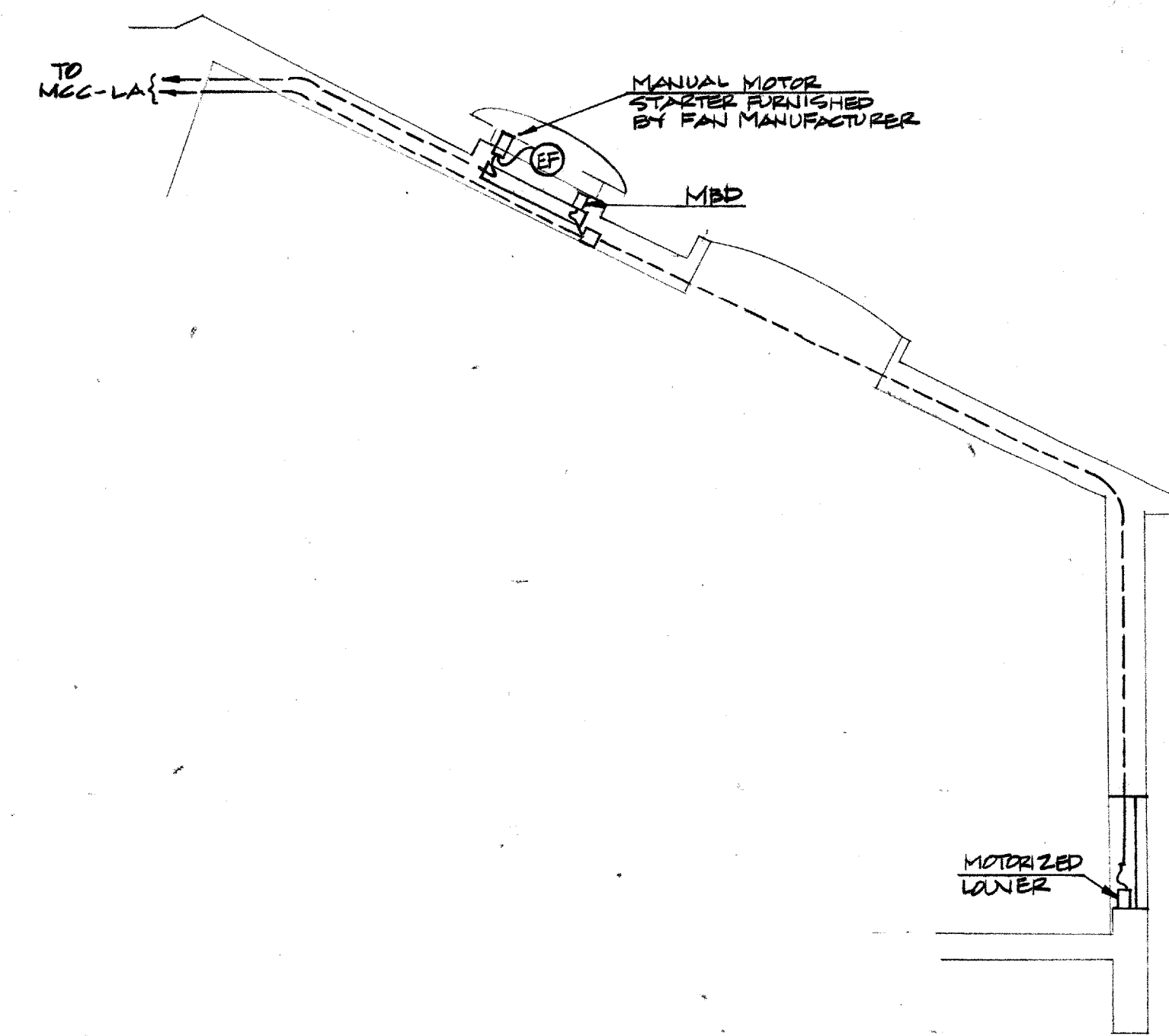


- NOTES:
- SEE SHEET E-12 FOR ADDITIONAL LIGHTING.
 - ALL LIGHTING CONDUITS SHALL BE CONCEALED EXCEPT WHERE COMING INTO PANEL LI & ON PUMP ROOM WALLS (CONDUIT ON PUMP ROOM WALLS SHALL BE RIGID).
 - LIGHTS IN ATTIC SEE E-12

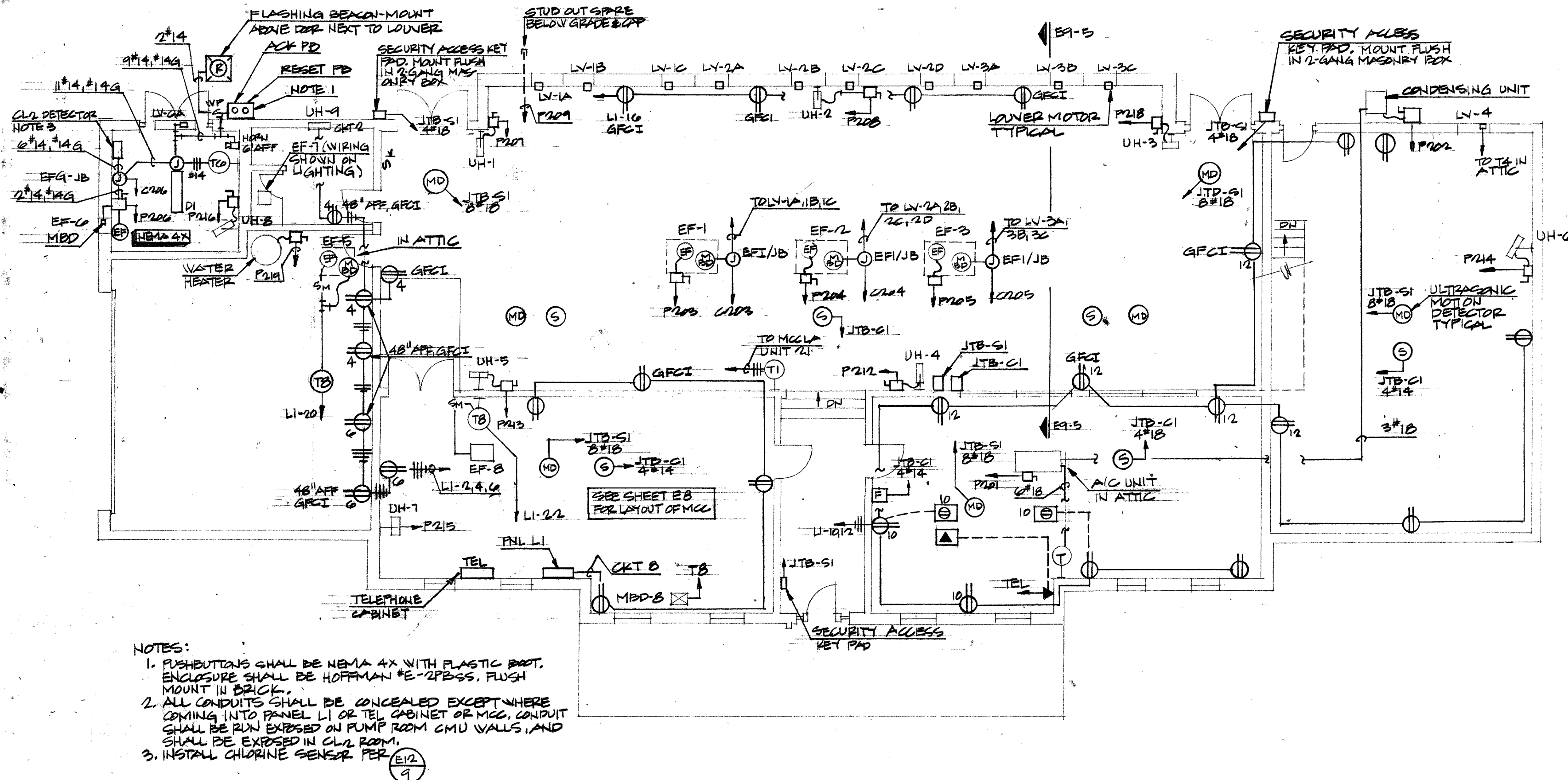


3 ATTIC LIGHTING PLAN
SCALE 1/8" = 1'-0"

5 SECTION-TYPICAL FOR EF-1, EF-2, EF-3

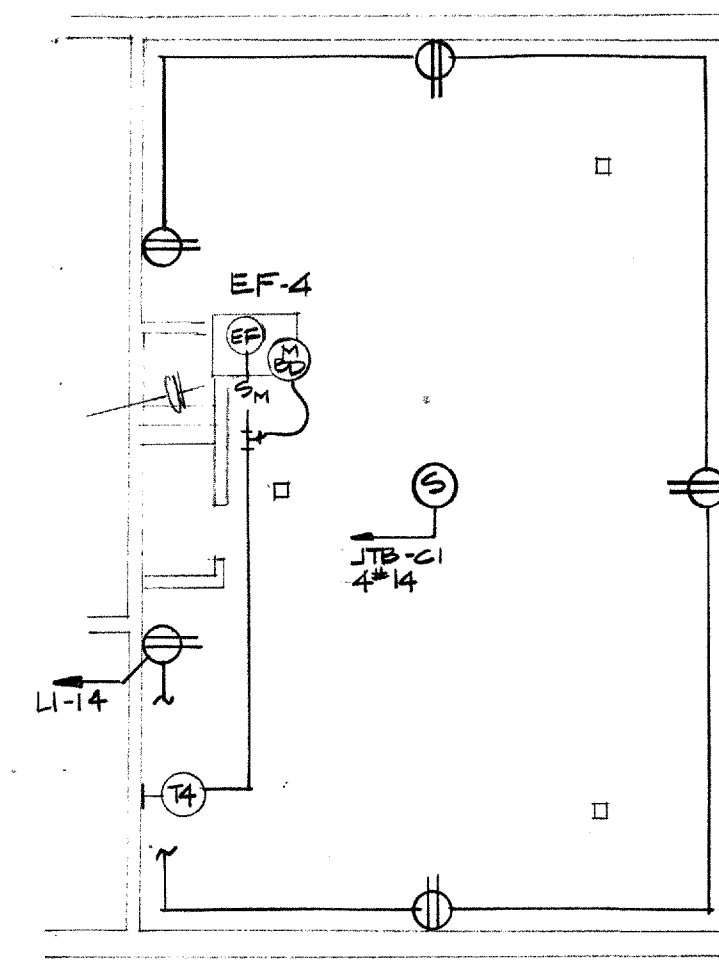


1 PLAN VIEW-LIGHTING
SCALE 1/8" = 1'-0"



- NOTES:
- PUSHBUTTONS SHALL BE NEMA 4X WITH PLASTIC BOOT. ENCLOSURE SHALL BE HOFFMAN #E-2FB-SS. FLUSH MOUNT IN BACK.
 - ALL CONDUITS SHALL BE CONCEALED EXCEPT WHERE COMING INTO PANEL LI OR TEL CABINET OR MCC. CONDUIT SHALL BE RUN EXPOSED ON PUMP ROOM CMU WALLS, AND SHALL BE EXPOSED IN CL2 ROOM.
 - INSTALL CHLORINE SENSOR PER E-12

2 PLAN VIEW-HVAC AND MISC.
SCALE 1/8" = 1'-0"



4 ATTIC PLAN
SCALE 1/8" = 1'-0"



Joseph J. Kotrla
2/18-87

No.	Revision	By	Date
TOWN OF ADDISON DALLAS COUNTY, TEXAS CELESTIAL ROAD PUMP STATION			
CHARLES R. McCREARY & ASSOCIATES		CONSULTING ENGINEERS SUITE 212 8200 LBJ FREEWAY DALLAS, TEXAS 75240	
GINN, INC. Consulting Engineers Dallas, Texas			
Designed - JK	Drawn - JW	Date -	Job No. -
Approved -	Checked -	Scale -	Sheet E9 of E12