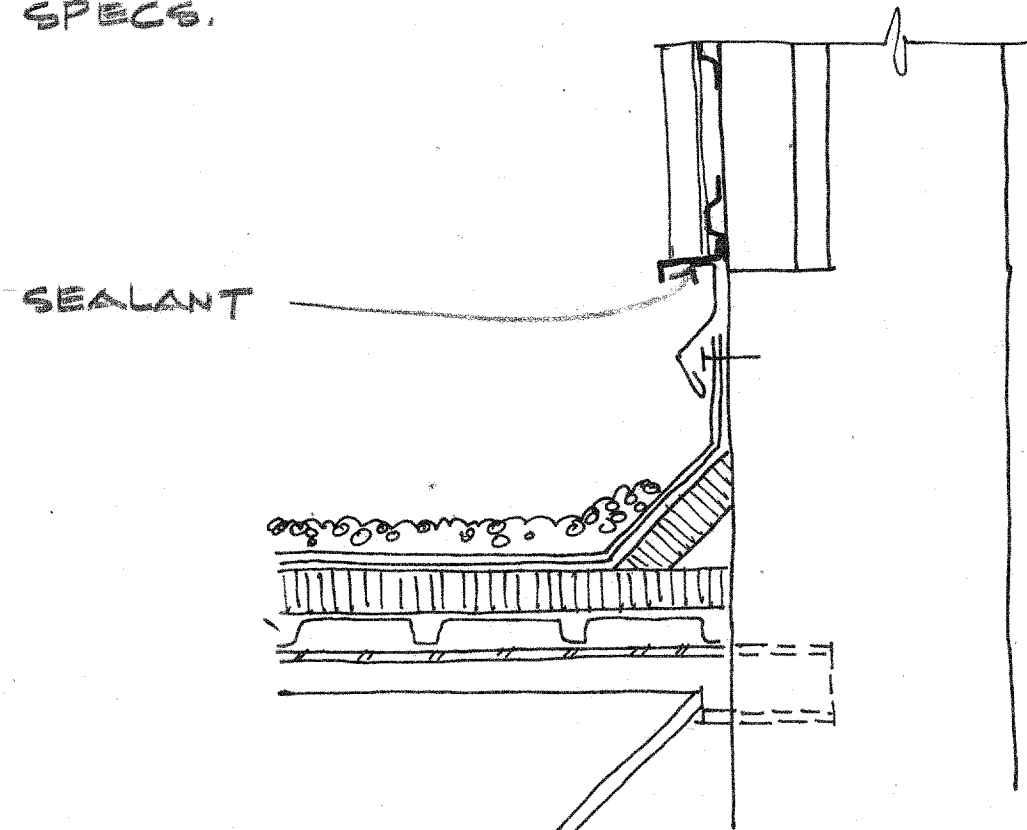
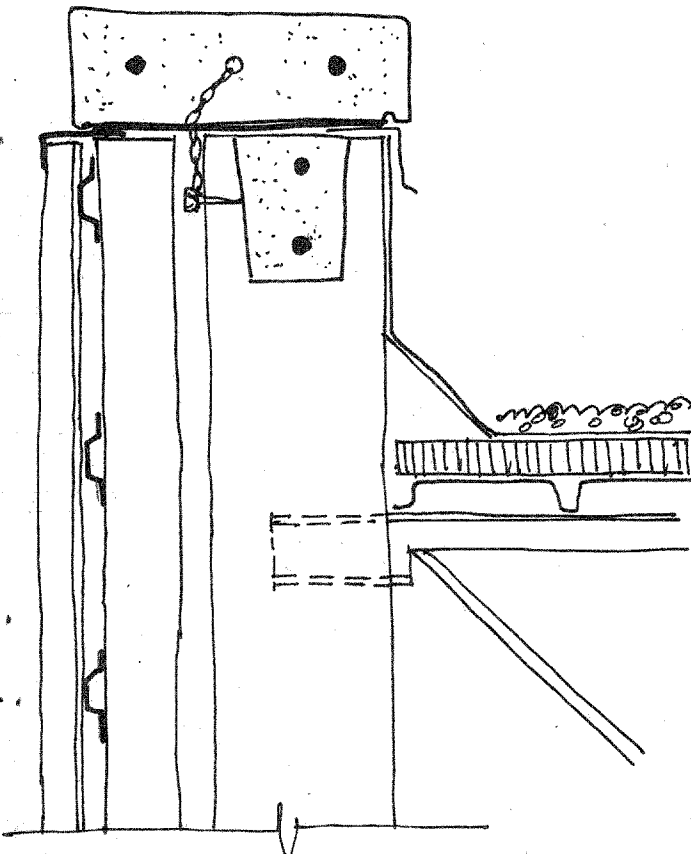


REMOVE CAST STONE COPING & ENOUGH FACE BRICK TO EXPOSE ANCHOR. INSTALL NEW GALV. MTL. CAP FLASHING OVER EXISTING WALL MATERIALS & NEW CAP TRIM. ANCHOR COPING & RE-BRICK

COAT EXISTING BRICK VENEER WITH WATER-PROOFING SEALER THEN INSTALL 3/4" HAT CHAN. @ 24" O.C.. INSTALL NEW INTERLOCKING MTL. WALL PANELS SIMILAR TO MIBCI DESIGNER SERIES F12-C. SYST. TO BE COMPLETE WITH CAP, JAMB & SIL TRIM AND INSTALL. IN STRICT ACCORDANCE TO MANUF. SPECS.

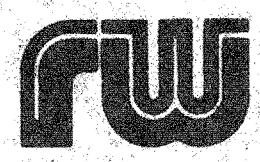


### GENERAL NOTES

1. CONTRACTOR TO PROTECT ALL ROOF AND WALL SURFACES DURING CONSTRUCTION SO AS TO PREVENT ANY DAMAGE TO THE EXIST. BUILDING
2. INSTALL SEALANT AT INTERSECTION OR JOINTS OF ALL DISSIMILAR MATERIALS
3. AFTER ALL REPAIR WORK IS COMPLETE APPLY CLEAR MASONRY SEALER OVER ALL EXPOSED MASONRY & CAST STONE ENTIRE BUILDING

#3 IS AN ALTERNATE PRICE ITEM.

### 4 - REPAIR AT WALL # 6



rowls & welty inc.  
 Architects / Planners  
 13601 Preston Road Suite 106  
 Dallas, Texas 75240 (214)490-0090