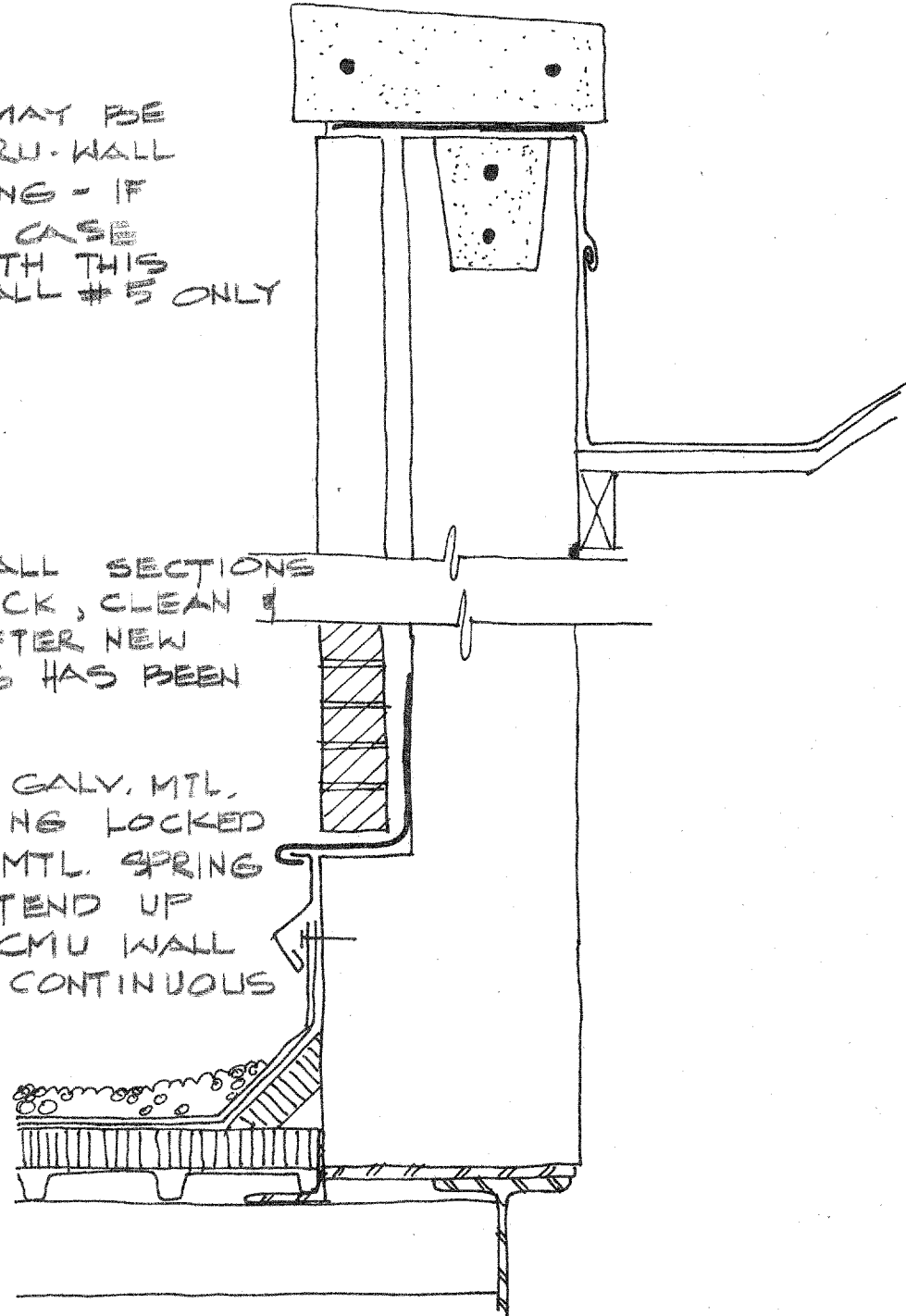


NOTE:

WALL 4 MAY BE BUILT WITH THRU-WALL BASE FLASHING - IF THAT IS THE CASE PROCEED WITH THIS WORK ON WALL #5 ONLY

REMOVE SMALL SECTIONS OF FACE BRICK, CLEAN & RE-INSTALL AFTER NEW BASE FLASHING HAS BEEN INSTALLED

INSTALL NEW GALV. MTL. BASE FLASHING LOCKED OVER EXIST. MTL. SPRING FLASHING. EXTEND UP MIN. 18" ON CMU WALL SET TOP IN CONTINUOUS SEALANT

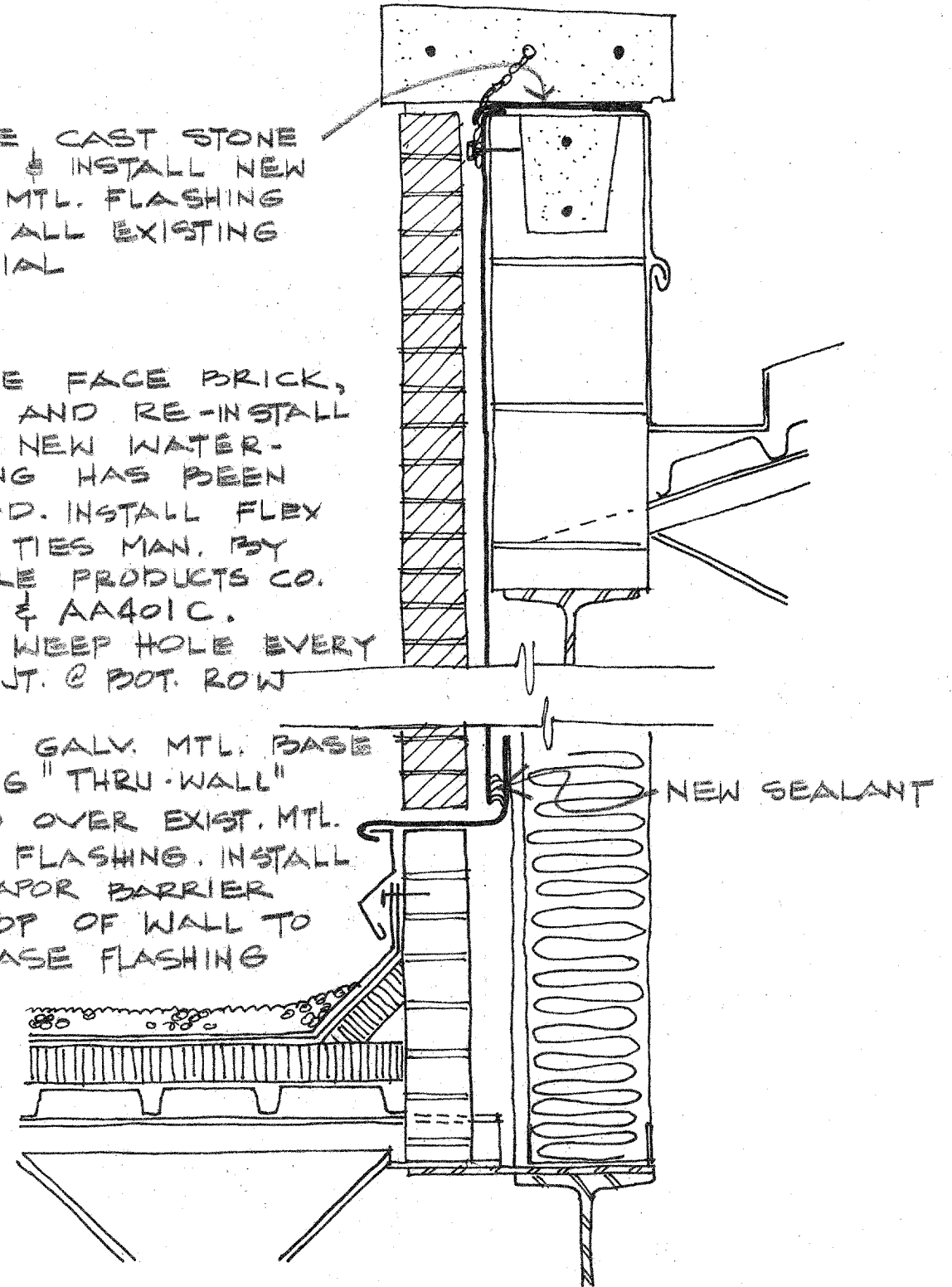


3 - REPAIR AT WALLS 4 & 5

REMOVE CAST STONE COPING & INSTALL NEW GALV. MTL. FLASHING OVER ALL EXISTING MATERIAL

REMOVE FACE BRICK, CLEAN AND RE-INSTALL AFTER NEW WATER-PROOFING HAS BEEN APPLIED. INSTALL FIBY O-LOC TIES MAN. BY AA WIRE PRODUCTS CO. AA400 & AA401C. CLEAN KEEP HOLE EVERY OTHER JT. @ POT. ROW

INSTALL GALV. MTL. BASE FLASHING "THRU-WALL" LOCKED OVER EXIST. MTL. SPRING FLASHING. INSTALL NEW VAPOR BARRIER FROM TOP OF WALL TO NEW BASE FLASHING



2 - REPAIR AT WALLS 1, 2 & 3



rawls & welty inc.  
Architects / Planners  
13601 Preston Road Suite 106  
Dallas, Texas 75240 (214)490-0090