

AIR HANDLING UNIT SCHEDULE

MARK	SUPPLY CFM	O.A. CFM	FACE AREA	ROWS	ENT. AIR		LVG. AIR		SUCTION TEMP	FAN S.P.	FAN R.P.M.	MOTOR DATA			MFR.	MODEL	REMARKS	
					D.B.	W.B.	D.B.	W.B.				H.P.	R.P.M.	VOLTS				PHASE
AHU-1	3600	600	5.56	4/16	64.5	66.1	63.1	57.3	42°	2.5	825	2	1750	208	3φ	H.O.A.	CARRIER #40R2012	
AHU-2	2600	700	4.0	4/12	66.2	67.5	66.5	59.3	40°	2.5	1100	1	1750	208	3φ	H.O.A.	CARRIER #40R2220	
AHU-3	400	—	1.6	2/13	78.5	62.6	64.8	57.1	42°	2.5	1650	1/8	1750	208	1φ	H.O.A.	CARRIER #40R2014	

FURNACE SCHEDULE

MARK	SERVES	FURN CFM	O.A.	FAN			COOLING COIL				HEATING COIL			MFR.	MODEL	MODEL COIL	REMARKS	
				RPM	EXT SP	MOTOR HP	ELECT CHAR	ENT AIR DB	LVG AIR WB	SUCTION DB	TEMP	ENT AIR °F	LVG AIR °F					CAPACITY BTUH
F-1	TRAINING ROOM	1000	100	1750	.5	1/3	120/1φ	74.3	62.6	57.4	42.2	42°	70°	106°	39,000	CARRIER	#38E-28V2	
F-2	DAY ROOM & KITCHEN	1000	300	1750	.5	1/3	120/1φ	66.3	67.8	58.6	56.0	42°	70°	106°	39,000	CARRIER	#38E-28V2	
F-3	SHOP & STORAGE	900	—	1750	.5	1/3	120/1φ	—	—	—	—	—	70°	116°	49,000	CARRIER	#38E-28V2	

CONDENSING UNIT SCHEDULE

MARK	SERVES	BTUH		TEMP °F		FAN MOTOR			COMP MOTOR			MFR.	MODEL	REMARKS	
		SENIBLE	TOTAL	SUCTION	AMBIENT	NO.	F.L.A.	VOLTS	PHASE	NO.	F.L.A.				VOLTS
CU-1	AHU-1	86,576	96,557	42°	106°	2	8.0	208	3φ	1	43.6	208	3φ	CARRIER	#38A1E012
CU-2	AHU-2	53,232	66,560	40°	105°	1	3.6	208	3φ	1	31.3	208	3φ	CARRIER	#38B0008
CU-3	AHU-3	12,700	16,800	42°	105°	1	1.3	208	1φ	1	11.7	208	1φ	CARRIER	#38E2020
CU-4	F-1	23,592	29,742	42°	106°	1	0.9	208	1φ	1	16.4	208	1φ	CARRIER	#38VH003
CU-5	F-2	29,000	37,396	42°	106°	1	1.2	208	1φ	1	17.1	208	1φ	CARRIER	#38VH245

GAS DUCT FURNACE SCHEDULE

DESIG.	CFM	BY-PASS CFM	BY-PASS SIZE	INPUT BTUH	OUTPUT BTUH	FLUE SIZE	MFR.	MODEL	REMARKS
DH-123	3600	1490	12" X 8"	75,000	69,000	5φ	BE200E	#HX-75	

GAS UNIT HEATER SCHEDULE

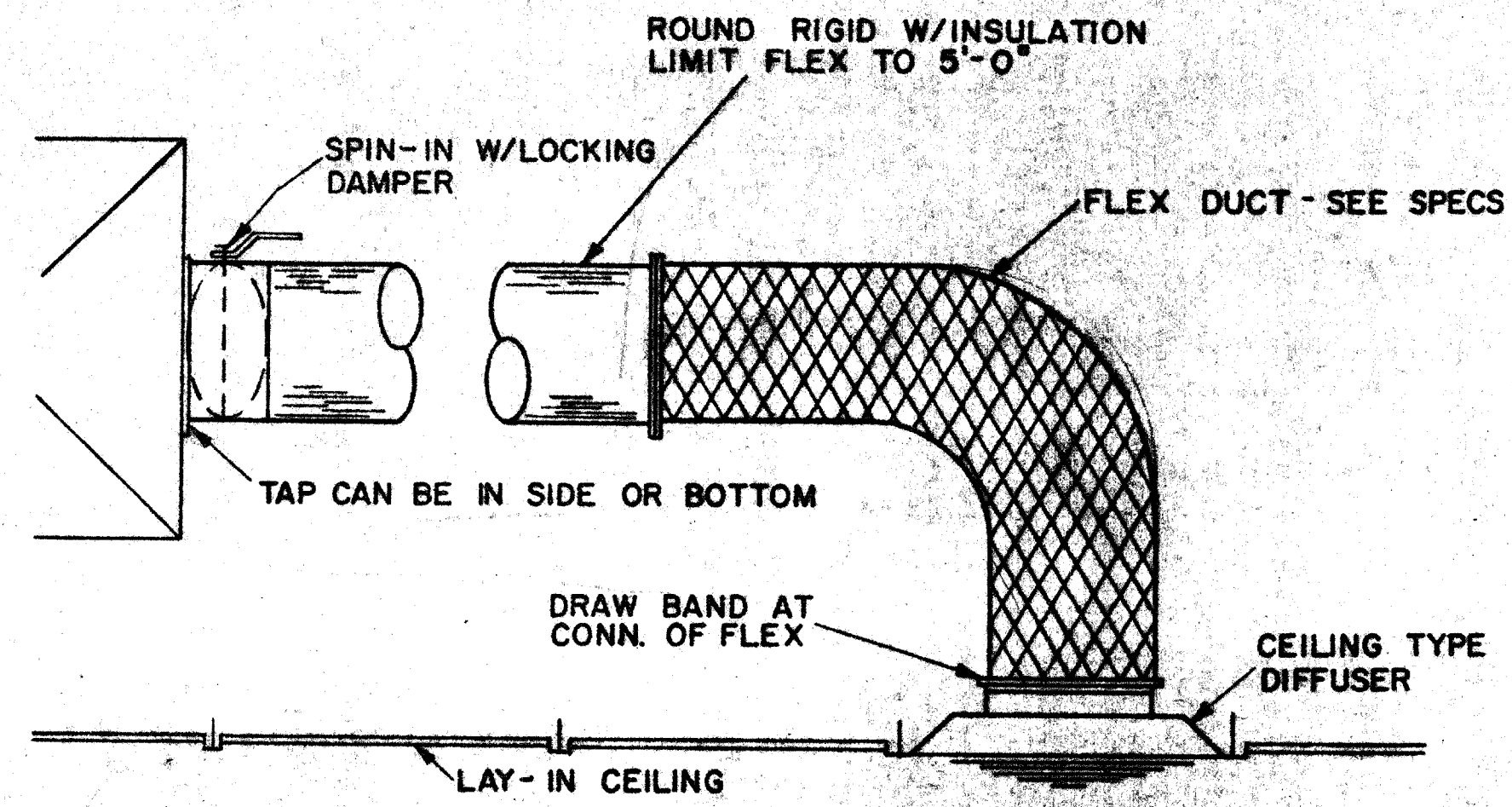
DESIG.	INPUT BTUH	OUTPUT BTUH	CFM	H.P.	ELECTRICAL	MFR.	MODEL	REMARKS
JH-142	39,000	—	500	1/60	120/1φ	BE200E	XL-30	FLUE SIZE 4φ

AIR DEVICE SCHEDULE

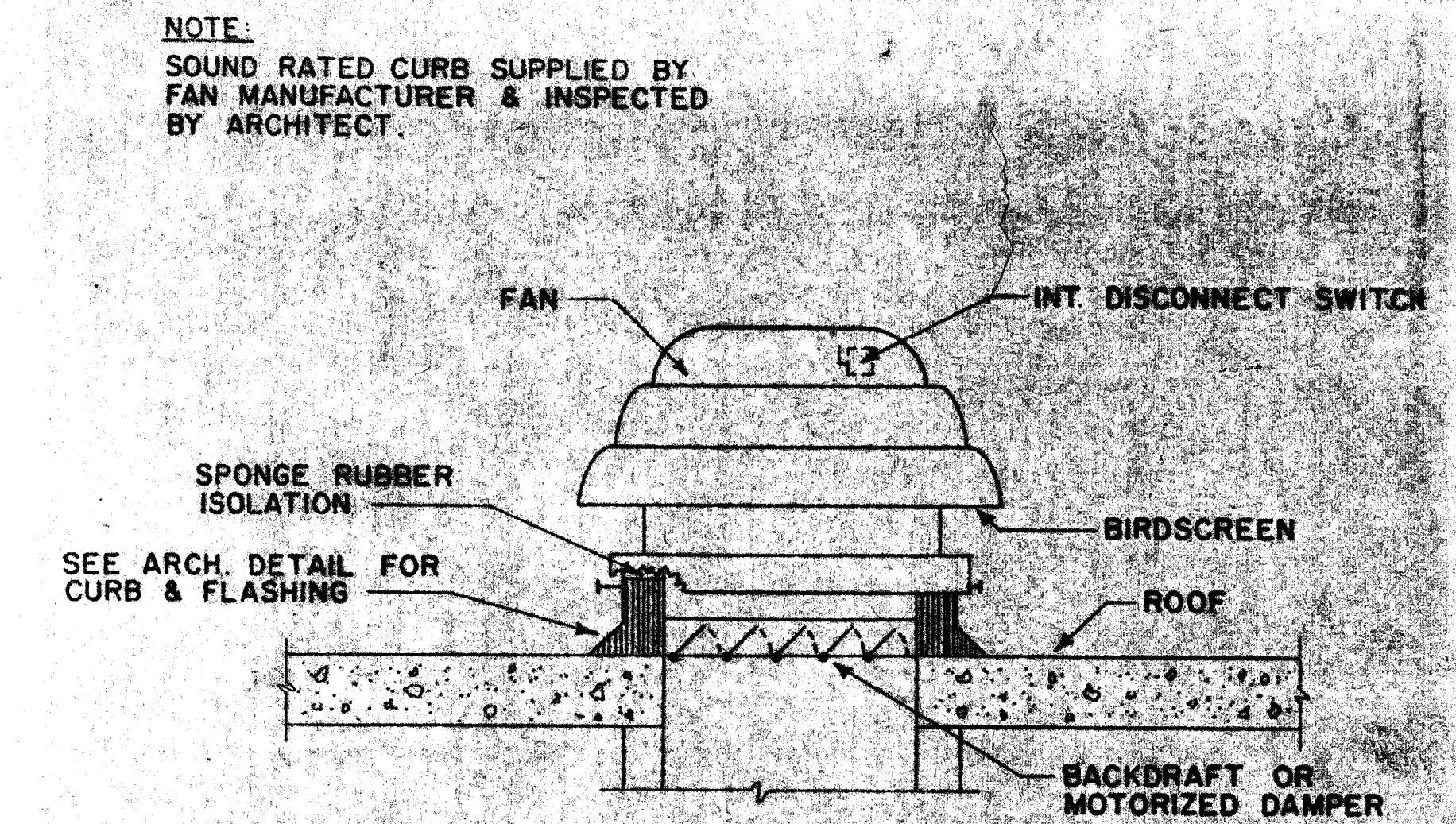
DESIG.	DESCRIPTION	CLS. TYPE	FACE DIMEN.	TYPE	FINISH	MFR.	REMARKS
A	CEILING SUPPLY	LAY-IN	24" X 24"	TKD	OFF-WHITE ENAMEL	TITUS	
B	CEILING RETURN	LAY-IN	24" X 12"	TKD	OFF-WHITE ENAMEL	TITUS	
C	CEILING SUPPLY	GYM BOARD	24" X 24"	TKD	OFF-WHITE ENAMEL	TITUS	
D	CEILING RETURN	GYM BOARD	24" X 12"	TKE	OFF-WHITE ENAMEL	TITUS	
E	CEILING EXHAUST	GYM BOARD	12" X 12"	TKE	OFF-WHITE ENAMEL	TITUS	

FAN SCHEDULE

DESIG.	TYPE	SERVES	CFM	S.P.	H.P.	MOTOR DATA			SHUTTER	REMARKS
						RPM	VOLT/PH.	STARTER		
EF-1	PEV	TOILET & SHOWER	550	.25	1/32	1650	120/1φ	H.O.A.	YES	ACME #PF76
EF-2	PEV	TOILET	400	.25	1/20	1650	120/1φ	H.O.A.	YES	ACME #PF10A8
EF-3	PEV	TOILET	30	.125	1/32	3000	120/1φ	SWITCH ON WALL	—	EUSH HAMPER INDUSTRIES GOOD AIR DUCTLESS
EF-4	PEV	LAUNDRY	125	.25	1/40	1650	120/1φ	SWITCH ON WALL	YES	ACME #PF71



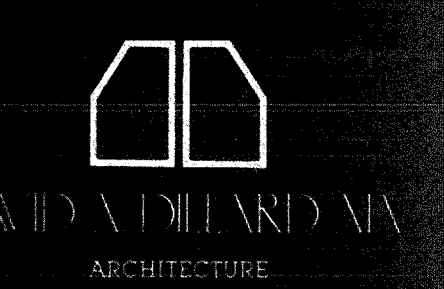
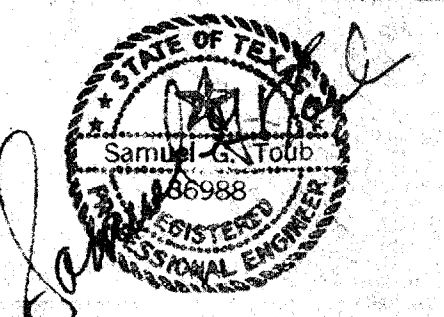
TYPICAL CEILING SUPPLY DIFFUSER
NO SCALE



ROOF FAN DETAIL
NO SCALE

NOTE:
SOUND RATED CURB SUPPLIED BY FAN MANUFACTURER & INSPECTED BY ARCHITECT.

S. TOUB & ASSOC.
CONSULTING ENGINEERS
DALLAS, TEXAS



DAVID A. DILARD, M.A.
ARCHITECTURE

410 Westside Center • Suite 5
Dallas, Texas 75201 • (214) 528-2841

CITY OF ADDISON
FIRE DEPARTMENT

CENTRAL OFFICES &
FIRE STATION #1

AIRPORT PARKWAY &
ADDISON ROAD, ADDISON, TX.

SCHEDULES & DETAILS

PROJECT NO. SHEET NO.
82.00

DATE
6/25/82

