

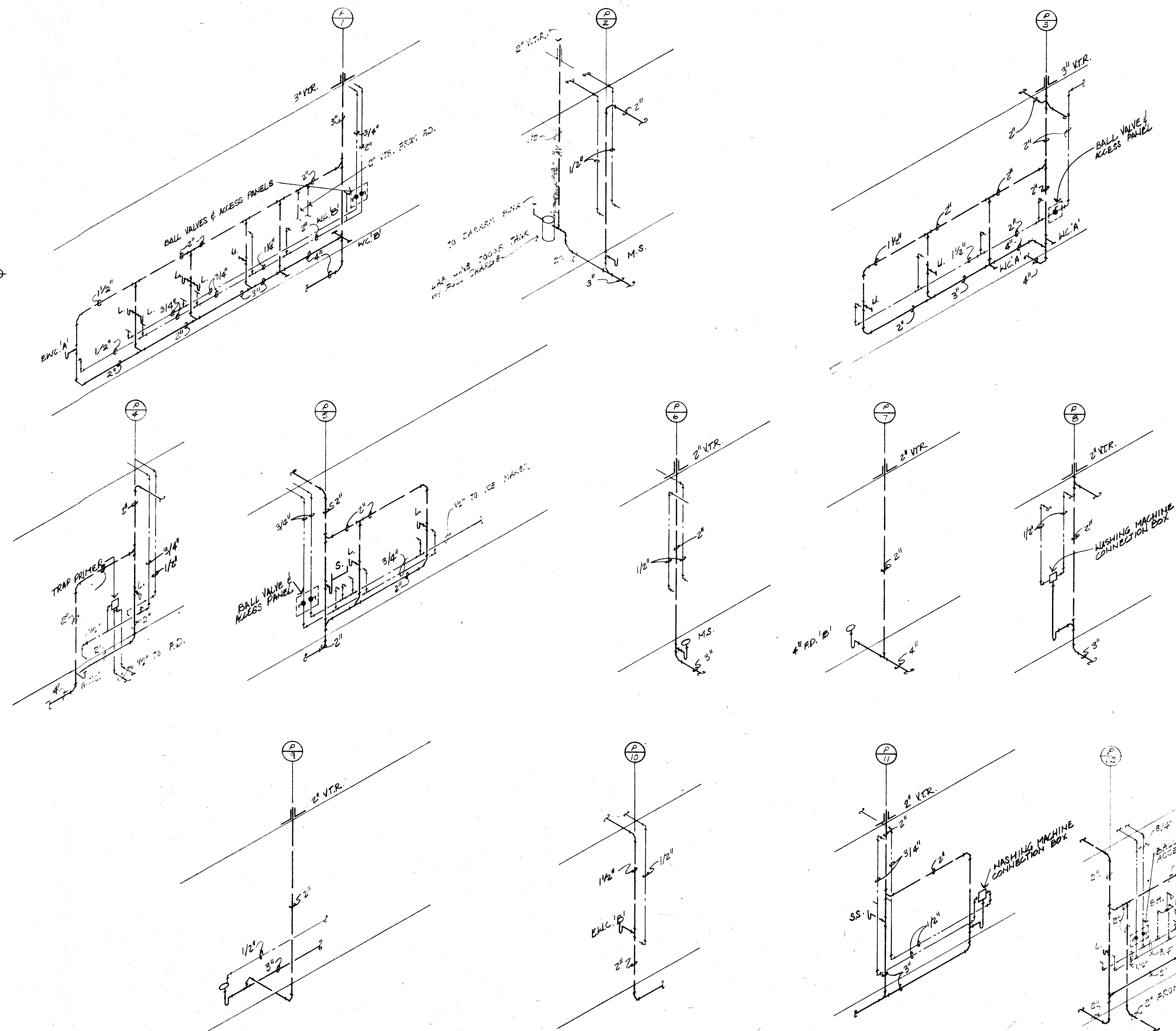
WATER HEATER PIPING DIAGRAM
NOT TO SCALE

| WATER HEATER SCHEDULE | | | | | | | |
|-----------------------|---------------|-----------------|-------------|--------------------|--------|-----------|--|
| DESIG | STORAGE GALS. | RECOVERY G.P.H. | DEGREE RISE | WTR. TEMP. LEAVING | G.P.H. | FLUE SIZE | REMARKS |
| WH-1 | 127 | 185 | 90°F | 130°F | 140 | 5"φ | A.O. SMITH 1/2 B.T.P. 125-140 ASME RATED & ASHRA 10-75 |

| RECIRCULATION PUMP SCHEDULE | | | | | | |
|-----------------------------|--------|----------|------|--------|-------------|---------------------------|
| DESIG. | G.P.M. | HEAD FT. | H.P. | R.P.M. | VOLTS/PHASE | REMARKS |
| RP-1 | 10 | 10 | 1/6 | 1750 | 115/1φ | THRU 1/2" P.B. ALL BRONZE |

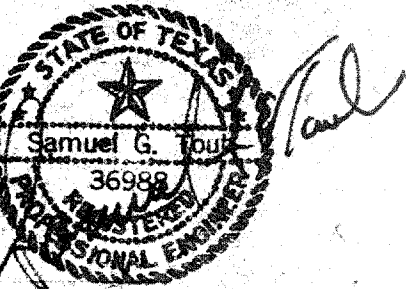
| AIR COMPRESSOR SCHEDULE | | | | | | |
|-------------------------|--------|------------|------|--------|-------------|-----------------------------------|
| DESIG. | C.F.M. | PSI REQ'D. | H.P. | R.P.M. | VOLTS/PHASE | REMARKS |
| AC-1 | 19.2 | 150 | 5 | 900 | 208/3φ | QUINCY NO. 325 & 80 GAL. RECEIVER |

| PLUMBING FIXTURE SCHEDULE | | | | | | | |
|---------------------------|--------------------------------|--------------------------|----------------------|--------|------|------|---|
| DESIG | FIXTURE | MANUFACTURER & MODEL NO. | CONNECTION SIZE | | | | TRIM & REMARKS |
| | | | W. | VT. | C.W. | H.W. | |
| W.C.'A' | WATER CLOSET TYPE 'A' | KOHLER NO. K-4430-ET | 4" | 2" | 1" | - | WALL HUNG VITREOUS CHINA SIPHON JET WATER CLOSET W/K-4670C SEAT, & SLOAN NO. 110-3 FLUSH VALVE & J.R. SMITH CHAIR CARRIER |
| W.C.'B' | WATER CLOSET TYPE 'B' | KOHLER NO. K-4430-ET | 4" | 2" | 1" | - | SAME AS ABOVE EXCEPT MOUNTED AT WHEELCHAIR HEIGHT |
| W.C.'C' | WATER CLOSET TYPE 'C' | KOHLER NO. K-3500-EB | 4" | 2" | 1/2" | - | FLOOR MOUNTED CLOSE-COUPLED WATER CLOSET, SIPHON, JET ELONGATED, W/K-4652 SEAT & K-7638 SUPPLIES |
| U. | URINAL | KOHLER NO. K-5014-T | 2" | 1 1/2" | 1" | - | WALL HUNG VITREOUS CHINA SIPHON JET URINAL, SLOAN NO. 180 FLUSH VALVE & J.R. SMITH CHAIR CARRIER |
| L. | LAVATORY | KOHLER NO. K-2195 | 2" | 1 1/2" | 1/2" | 1/2" | SELF-RIMMING OVAL LAVATORY W/ K-6882 FAUCET WITH POP DRAIN, K-7606 SUPPLIES & K-9000 P-TRAP |
| S. | SINK | JUST NO. DLKD-2243-A-GR | 2" | 1 1/2" | 1/2" | 1/2" | SELF-RIMMING STAINLESS SINK 18 GAUGE SINK W/OB2105 FAUCET, JV35 BASKET STRAINER, T.S.S. MODEL E928B BADGER V DISPOSAL MCGUIRE 2158 SUPPLIES, & MCGUIRE NO. 111 CONTINUOUS WASTE & MCGUIRE NO. 8912 P-TRAP |
| M.S. | MOP SINK | FIAT NO. MSB-2424 | 3" | 2" | 1/2" | 1/2" | FLOOR MOUNTED MOLDED STONE SINK W/NO. 830-RA FAUCET, 832-AA HOSE & BRACKET |
| S.S. | SERVICE SINK | KOHLER NO. K-6716 | 3" | 2" | 1/2" | 1/2" | CAST IRON SERVICE SINK W/R6673 TRAP STANDARD & K-8905 FAUCET |
| SH | SHOWER | SPEAKMAN NO. S-1400-M-2 | 2" | 1 1/2" | 1/2" | 1/2" | SPEAKMAN SHOWER HEAD & VALVE COMPLETE WITH J.R. SMITH NO. 2005-A DRAIN W/DEEP SEAL P-TRAP |
| WH | WALL HYDRANT | J.R. SMITH NO. 5730 | - | - | 3/4" | - | WALL MOUNTED HYDRANT W/LOCKING COVER |
| F.D.'A' | FLOOR DRAIN TYPE 'A' | J.R. SMITH NO. 2010-B-P | AS NOTED ON DRAWINGS | | | | FLOOR DRAIN W/NICKEL BRONZE TOP, TRAP PRIMER CONNECTIONS AND DEEP SEAL P-TRAP |
| F.D.'B' | FLOOR DRAIN TYPE 'B' | J.R. SMITH NO. 2010-B | AS NOTED ON DRAWINGS | | | | FLOOR DRAIN W/CAST IRON TOP & DEEP SEAL P-TRAP |
| F.D.'C' | FLOOR DRAIN TYPE 'C' | J.R. SMITH NO. 2010A | AS NOTED ON DRAWINGS | | | | FLOOR DRAIN W/NICKEL BRONZE TOP & DEEP SEAL P-TRAP |
| R.D. | ROOF DRAIN | J.R. SMITH NO. 1010ERC | AS NOTED ON DRAWINGS | | | | |
| DESIG | FIXTURE | MANUFACTURER & MODEL NO. | CONNECTION SIZE | | | | TRIM & REMARKS |
| | | | W. | VT. | C.W. | H.W. | |
| EW.C.'A' | ELECTRIC WATER COOLER TYPE 'A' | HAMS NO. HWR-8 | 1 1/2" | 1 1/2" | 1/2" | - | WALL MOUNTED WATER COOLER COLOR AS SELECTED BY ARCHITECT |
| EW.C.'B' | ELECTRIC WATER COOLER TYPE 'B' | HAMS NO. HWR-8 | 1 1/2" | 1 1/2" | 1/2" | - | FULLY RECESSED WATER COOLER W/ STAINLESS STEEL FINISH |



PLUMBING RISER DIAGRAMS
NOT TO SCALE

PLUMBING & ASSOC.
MECHANICAL CONTRACTORS
DALLAS, TEXAS



DAVID A. HOWARD
ARCHITECT
4110 Westside Drive • Suite 5
Dallas, Texas 75247 • 214-348-2844

CITY OF ADDISON
FIRE DEPARTMENT

CENTRAL OFFICES &
FIRE STATION NO. 1
ARPORT PARKWAY &
ADDISON ROAD, ADDISON, TX.

SCHEDULES
RISER DIAGRAMS

PROJECT NO: SHEET NO
82.00

DATE
6/23/82

P3