

DISTRIBUTION PANEL - 'MP'*

CCT NO.	SERVES	CIRCUIT BREAKER			CONDUIT AND WIRE	REMARKS
		FRAME SIZE	POLE	TRIP SIZE		
1	PANEL '2L'	100	2	100	3-#8-1/4" C.	
2	PANEL 'IL'	225	2	150	3-#10-1/2" C.	
3	PANEL 'CR'	50	2	50	3-#6-1" C.	
4	WIREGUTTER 'A'	100	2	100	3-#4-1" C.	
5	WIREGUTTER 'B'	225	2	125	3-#4-1" C.	
6	SPACE	225	2	-	-	

* 120 / 240 VOLT, 1 ϕ , 3 WIRE, 400 AMP BUSSING

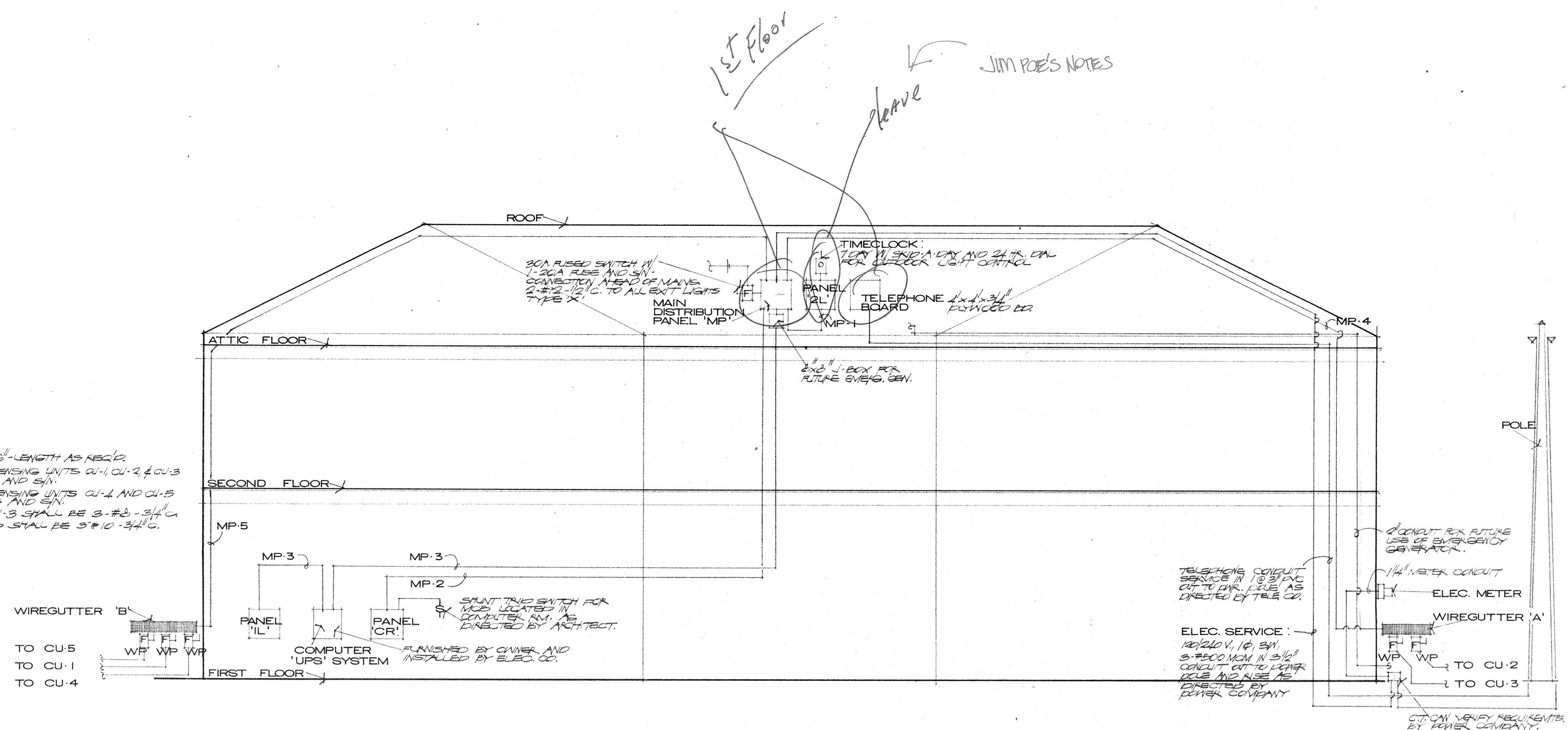
PANELBOARD SCHEDULE

DESIGNATION	VOLTS	PHASE	WIRE	MTG.	MAINS		BRANCH CIRCUIT				REMARKS	
					TYPE	AMPS	TOTAL POLES	ACTIVE	SPARE	SPACE		POLE
PANEL '2L'	120/240	1	3	5	M.A.O.	100	50	21	5	10	1	20
PANEL 'IL'	120/240	1	3	5	M.A.O.	225	30	15	4	0	2	40
PANEL 'CR'	120/240	1	3	5	M.C.B. SENSITIVE TRIP	50	15	5	5	2	1	20

LIGHT FIXTURE SCHEDULE

TYPE	DESCRIPTION	DIFFUSER LAMPS	REMARKS
B	RECESSED FLUORESCENT 1x4, TROOPER, STATIC, BAKED WHITE FINISH, 120V. BALLAST W/ PLASTER FRAME, DAYRITE # CG 142-002A W/ FMR-12	4-40W 4-1/2" x 4" FL	
C	RECESSED FLUORESCENT 2x4, TROOPER, STATIC, BAKED ENAMEL FINISH, 120V. BALLAST W/ PLASTER FRAME, DAYRITE # CG 244-002D W/ FMR-24	4-40W 4-1/2" x 8" FL	
D	SURFACE MOUNTED INCANDESCENT CYLINDER BRACKET W/ UP AND DOWN LIGHT, WHITE FINISH, BLACK MILLI-GROOVE Baffle LIGHTGUARD # 6007	2-75W R-30 FL	
E	SURFACE MOUNTED INCANDESCENT LIGHT BAR BRACKET, CHROME FINISH LIGHTGUARD # 4322	4-40W 8-1/2" x 12" IF	
F	RECESSED FLUORESCENT 2x4, TROOPER, STATIC, BLACK SLIT ALL AROUND LOCK, 120V. BALLAST AND PLASTER FRAME DAYRITE # 2044-0025-4 IF	4-40W 4-1/2" x 8" FL	
G	KEYLESS PORCELAIN SOCKET P AND S #44	1-100W A-21 IF	
X	EXIT LIGHT, UNIVERSAL MOUNT, UNIVERSAL ARROWS, RED LETTERS, STENCILED PANEL, 120V. INCANDESCENT PRESOLUTE # 7520 SERIES	RED ELASTIC 2-20W T-9 1/2" C-	

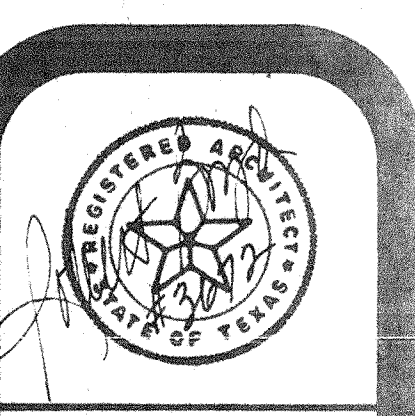
NOTES:
 WIREGUTTERS A AND B SHALL BE 0'x0'-LENGTH AS REQ'D.
 FUSED DISCONNECT SWITCHES FOR CONDENSING UNITS CU-1, CU-2, & CU-3 SHALL BE 00 AMP, W/ 2-50A. FUSETRON'S AND S/N.
 FUSED DISCONNECT SWITCHES FOR CONDENSING UNITS CU-4 AND CU-5 SHALL BE 00 AMP, W/ 2-35A. FUSETRON'S AND S/N.
 CONDUIT AND WIRE TO CU-1, CU-2, AND CU-3 SHALL BE 3-#8-3/4" C.
 CONDUIT AND WIRE TO CU-4 AND CU-5 SHALL BE 3-#10-3/4" C.



1st Floor
 leave
 JIM POE'S NOTES

SHEPHERD + BOYD
 ARCHITECTS/PLANNERS & INTERIORS
 DOUGLAS AVENUE SUITE 500
 DALLAS TEXAS 75205
 214/691-8000

ADDISON TOWN HALL
 ADDISON TEXAS



REVISIONS

NO.	DESCRIPTION

DATE JAN. 4, 1982

SHEET A-19