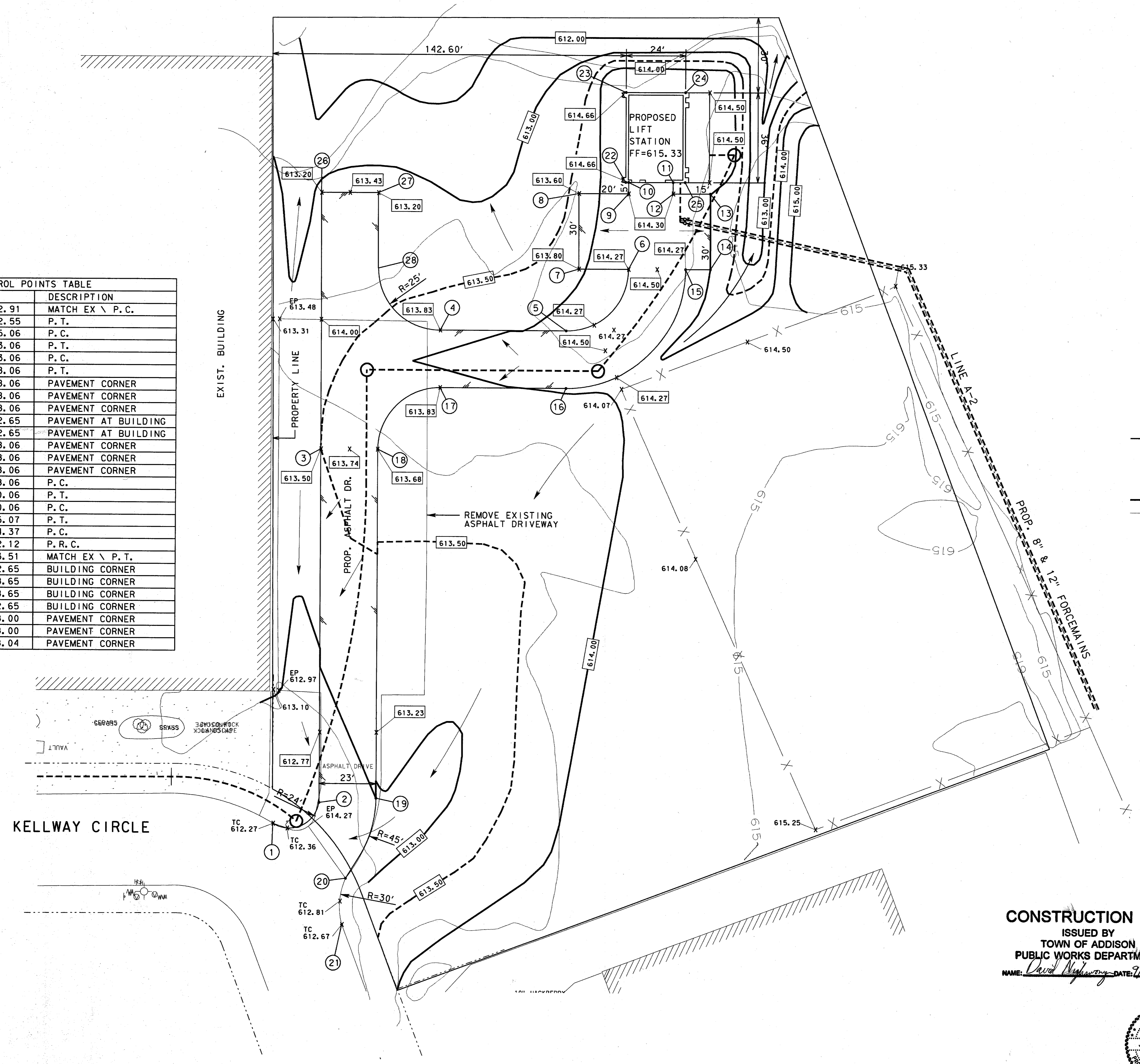


COORDINATE CONTROL POINTS TABLE			
NO.	N	E	DESCRIPTION
1	2202172.75	475582.91	MATCH EX \ P. C.
2	2202177.02	475592.55	P. T.
3	2202176.92	475735.06	P. C.
4	2202224.89	475783.06	P. T.
5	2202275.77	475783.06	P. C.
6	2202300.77	475808.06	P. T.
7	2202280.77	475808.06	PAVEMENT CORNER
8	2202280.77	475838.06	PAVEMENT CORNER
9	2202300.77	475838.06	PAVEMENT CORNER
10	2202300.77	475842.65	PAVEMENT AT BUILDING
11	2202318.77	475842.65	PAVEMENT AT BUILDING
12	2202318.77	475838.06	PAVEMENT CORNER
13	2202333.77	475838.06	PAVEMENT CORNER
14	2202333.77	475808.06	PAVEMENT CORNER
15	2202323.77	475808.06	P. C.
16	2202275.77	475760.06	P. T.
17	2202224.89	475760.06	P. C.
18	2202199.88	475735.07	P. T.
19	2202199.98	475594.37	P. C.
20	2202187.91	475562.12	P. R. C.
21	2202186.45	475543.51	MATCH EX \ P. T.
22	2202299.61	475842.65	BUILDING CORNER
23	2202299.61	475878.65	BUILDING CORNER
24	2202323.61	475878.65	BUILDING CORNER
25	2202323.61	475842.65	BUILDING CORNER
26	2202176.85	475838.00	PAVEMENT CORNER
27	2202199.81	475838.00	PAVEMENT CORNER
28	2202199.83	475808.04	PAVEMENT CORNER



LEGEND

(6)	COORDINATE POINT NUMBER
614.08	EXISTING ELEVATION
614.27	PROPOSED ELEVATION
---	PROPOSED CONTOUR
---	EXISTING CONTOUR

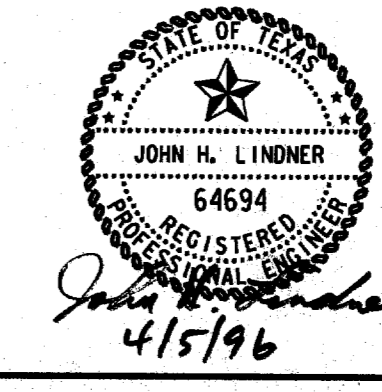
PRELIMINARY - FOR REVIEW ONLY

These documents are for Design Review and not intended for Construction, Bidding, or Permit Purposes. They were prepared by, or under the supervision of:

JOHN LINDNER 64694 01-02-96
 Type or Print Name PE Date

CONSTRUCTION SET
 ISSUED BY
 TOWN OF ADDISON
 PUBLIC WORKS DEPARTMENT
 NAME: *David Highway* DATE: *7/10/96*

4			
3			
2			
1			
NO.	DATE	REVISION	APPROVED
TOWN OF ADDISON, TEXAS			
MIDWAY/BELTLINE SANITARY SEWER PHASE II			
LIFT STATION SITE & GRADING PLAN			
Carter & Burgess <small>Consultants in Engineering, Architecture, Planning and the Environment</small> CARTER & BURGESS, INC. <small>7950 ELMBROOK DRIVE, SUITE 250 DALLAS, TX 75247-4961</small>			
Unit:	Scale:	1" = 20'	Date: 04-30-96
Designed:	J. Lindner	Checked:	J. Lindner
Drawn:	R. Howman	Approved:	J. Lindner
Job No.:	93206	Sheet:	39 of 63



John Lindner
4/5/96