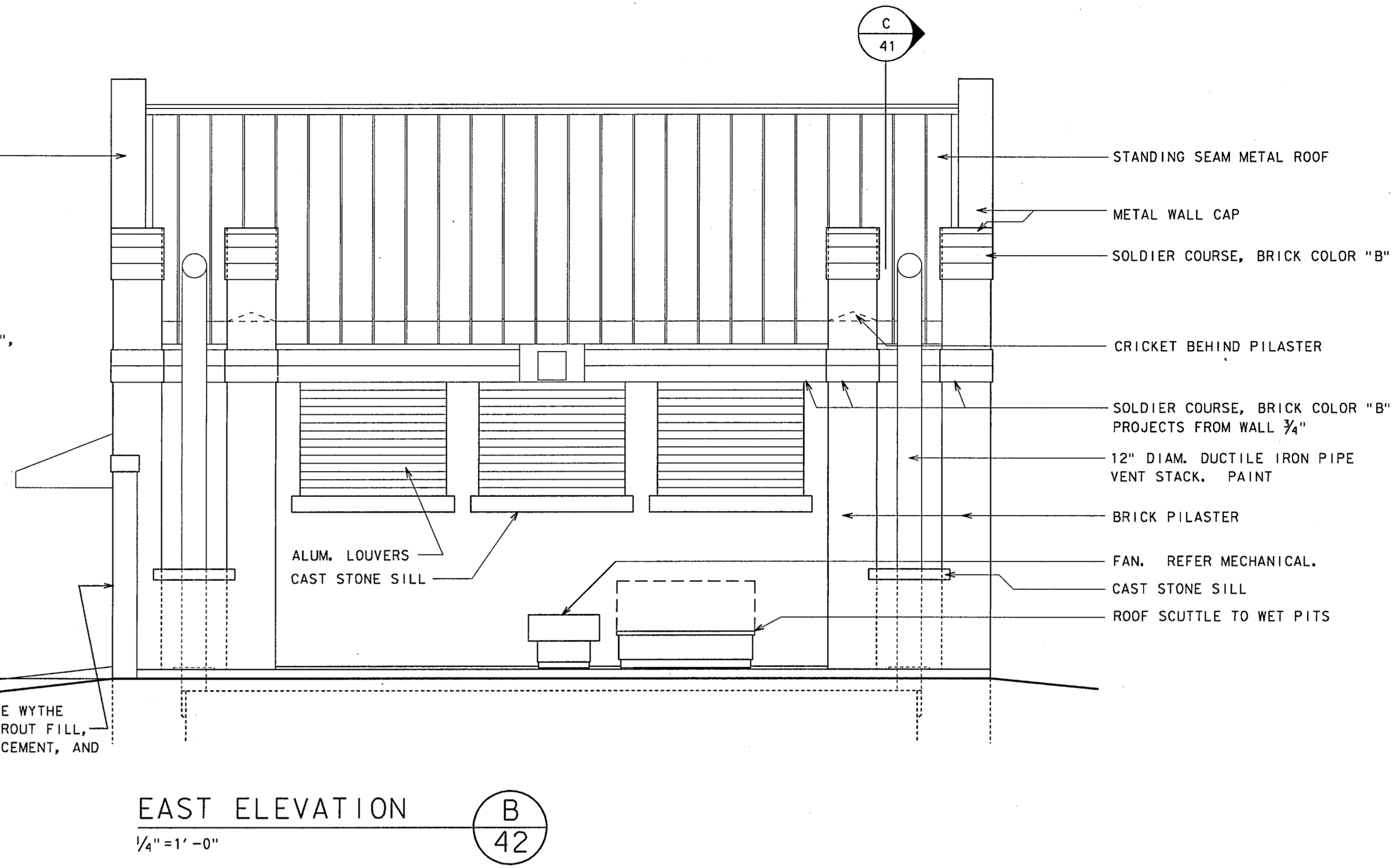
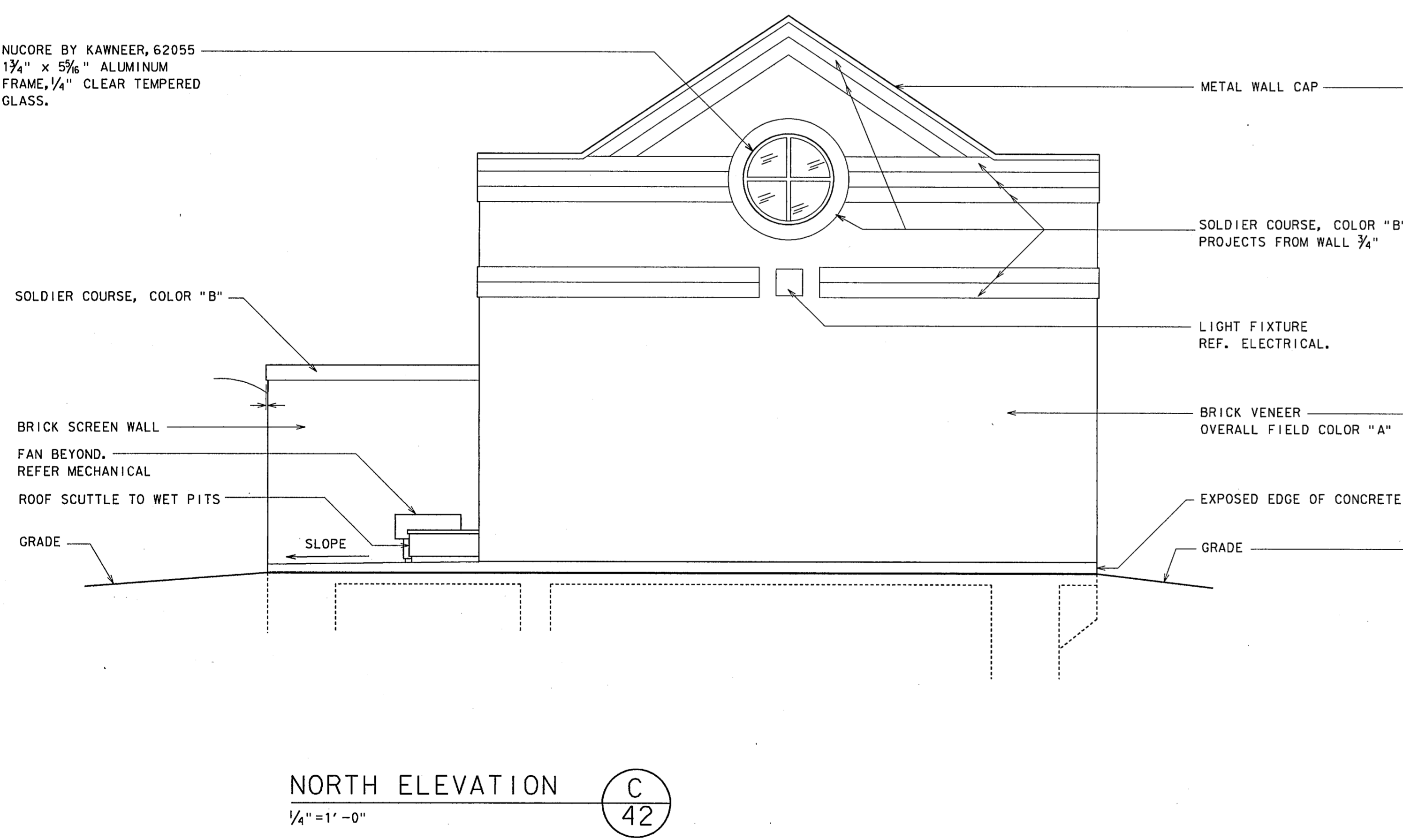


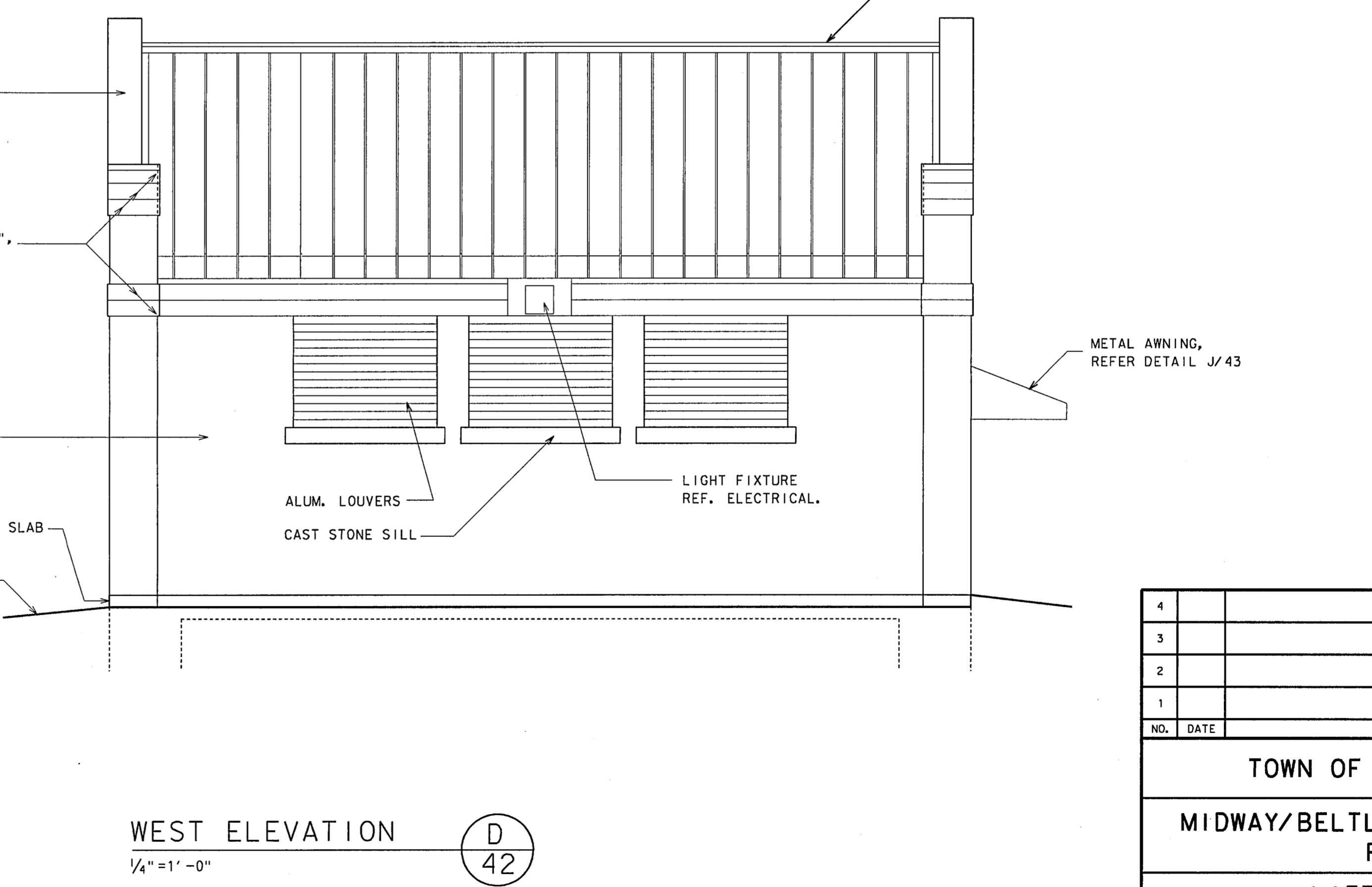
SOUTH ELEVATION (A) 42
1/4"=1'-0"



EAST ELEVATION (B) 42
1/4"=1'-0"



NORTH ELEVATION (C) 42
1/4"=1'-0"



WEST ELEVATION (D) 42
1/4"=1'-0"

GENERAL NOTES:
1. CAST STONE TO BE 6,500 PSI W/ LESS THAN 6% WATER ABSORPTION, WHITE CEMENT. MANUFACTURER TO BE MEMBER OF CAST STONE INSTITUTE.



4			
3			
2			
1			
NO.	DATE	REVISION	APPROV.
TOWN OF ADDISON, TEXAS			
MIDWAY/BELTLINE SANITARY SEWER PHASE II			
LIFT STATION - ARCHITECTURAL EXTERIOR ELEVATIONS			
Carter Burgess Consultants in Engineering, Architecture, Planning and the Environment CARTER & BURGESS, INC. 7550 EMBROOK DRIVE, SUITE 250 DALLAS, TX 75247-4993			
Unit	Scale	Date	04-05-96
Designed	R. WRIGHT	Checked	R. WRIGHT
Drawn	R. WRIGHT	Approved	J. Lindner
Job No.	93327601D	Sheet	42 of 63