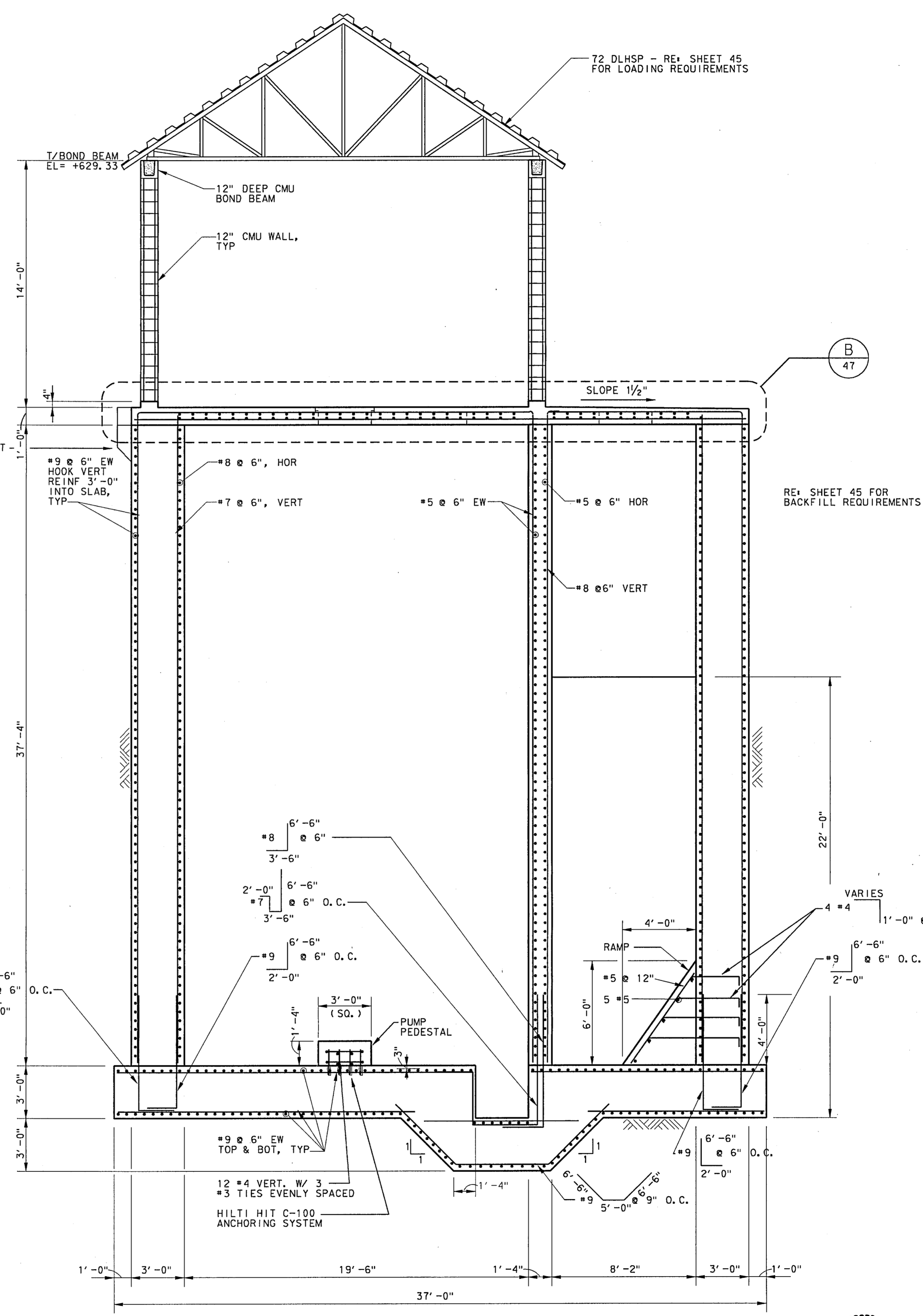


SECTION A
1/4" = 1' - 0"

NOTE: BRACE WALLS CONTINUOUSLY AT TOP DURING BACKFILLING OPERATION. BRACING TO REMAIN IN PLACE UNTIL TOP SLAB HAS REACHED 75% OF ITS DESIGN STRENGTH.



SECTION B
1/4" = 1' - 0"

4			
3			
2			
1			
NO.	DATE	REVISION	APPROV.

TOWN OF ADDISON, TEXAS
MIDWAY/BELTLINE SANITARY SEWER
PHASE II
LIFT STATION
STRUCTURAL BUILDING SECTIONS

Carter Burgess
Consultants in Engineering, Architecture,
Planning and the Environment
CARTER & BURGESS, INC.
7550 ELMBROOK DRIVE, SUITE 250
DALLAS, TX 75247-4961

Unit	Scale	Date	04-05-96
Designed	K. Houghton	Checked	K. Houghton
Drawn	C. Sammons	Approved	J. Lindner
		Job No.	93327601D
		Sheet	46 of 63

REGISTERED PROFESSIONAL ENGINEER
JAMES K. HOUGHTON
6/12/88
915196