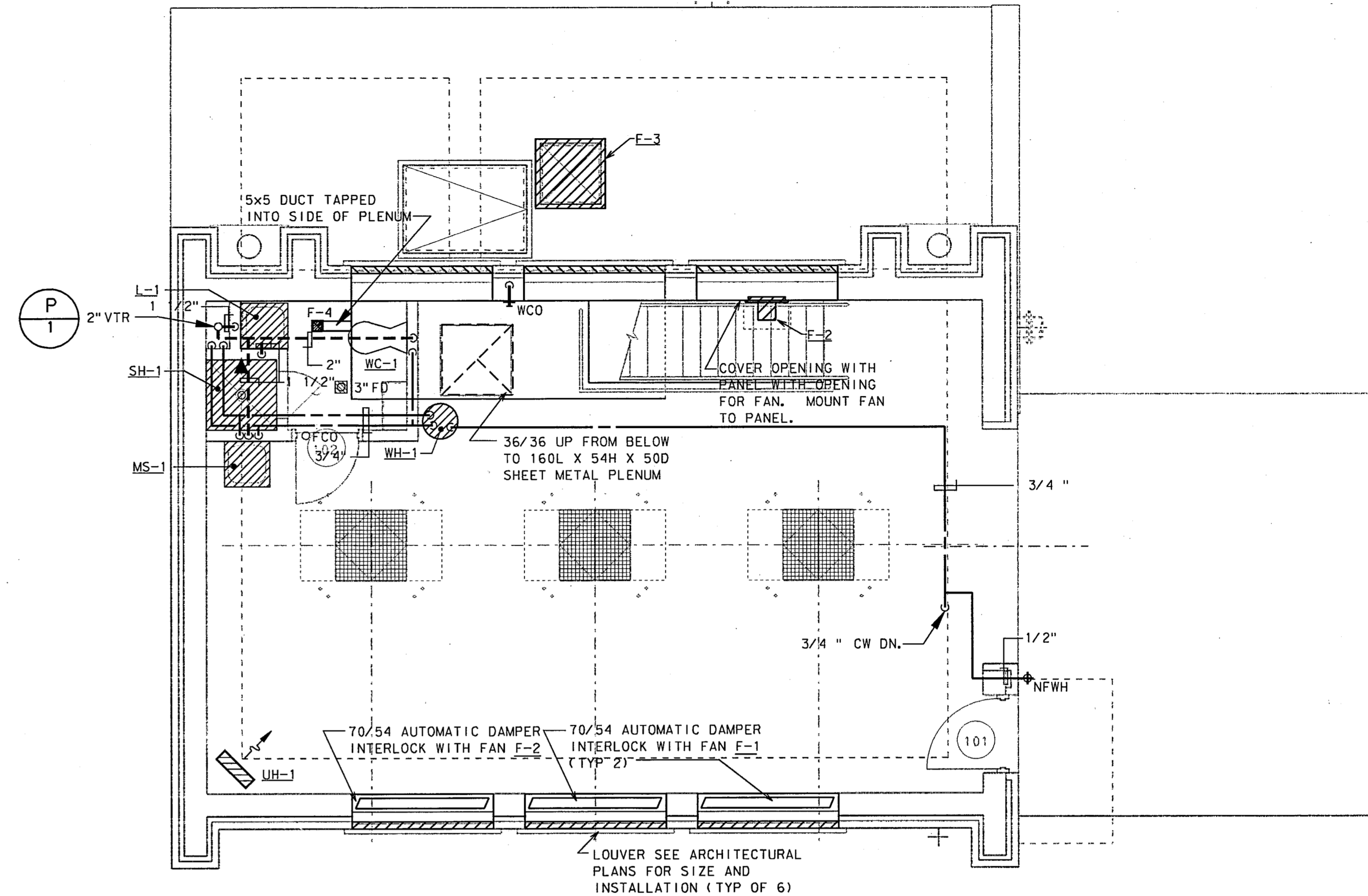


LOWER LEVEL FLOOR PLAN

1/4" = 1'-0"



A 52



GROUND LEVEL FLOOR PLAN

1/4" = 1'-0"



B 52

GENERAL NOTES

FAN SCHEDULE

MARK	F-1	F-2	F-3	F-4
SERVICE	PUMP RM.	CONTROL RM.	WET PIT	TOILET RM.
TOTAL AIR (CFM)	14,385	1,480	760	100
EXTERNAL STATIC PRESS. (IN. W.G.)	0.75	0.13	0.13	0.15
UNIT TYPE	INLINE	PROP.	ROOF EXH.	CLG. EXH.
DRIVE TYPE	BELT	BELT	BELT	DIRECT
ACCEPTABLE Lw(A) (db)	-	-	-	-
FAN (HP)	7.5	1/6	1/6	0.5 WATTS
VOLTAGE/PHASE	480/3	115/1	115/1	115/1
MANUFACTURER	GREENHECK	GREENHECK	GREENHECK	GREENHECK
MODEL NUMBER	BS0-360	SDE-16-24-B	RSF-90	SP-108
NOTES	1, 6	2, 6	3, 4, 6	5

REMARKS

1. EXTERNAL STATIC PRESSURE CONSISTS OF DUCTWORK, AIR DEVICES, FILTERS.

NOTES

- DAMPERS INTERLOCKED WITH LIGHT SWITCH TO BE ON WHEN SWITCH IS TURNED ON. WHEN DAMPER FULLY OPEN, START FAN. BOTH DAMPERS MUST BE FULLY OPEN FOR FAN TO OPERATE. SEQUENCE OPERATES IN REVERSE WHEN LIGHT SWITCH "OFF".
- UPON RISE IN TEMPERATURE ABOVE THERMOSTAT SETPOINT 60°F (ADJ.) DAMPER OPENS. ON FAN ON SEQUENCE OPERATES IN REVERSE WHEN TEMPERATURE FALLS BELOW SETPOINT.
- PROVIDE BIRDSCREEN, NO FILTER.
- FAN IS CONTINUOUS RUN.
- FAN INTERLOCKED WITH LIGHT SWITCH TO BE ON WHEN SWITCH IS TURNED ON.
- CORROSION PROOF CONSTRUCTION.

WATER HEATER (ELECTRIC) SCHEDULE

MARK	EWH-1
SERVICE	TOILET RM.
RECOVERY @ 100°F RISE (GPH)	18.4
STORAGE CAPACITY (GAL)	40
TEMPERATURE IN/OUT (°F)	55/110
ELECTRIC INPUT (KW)	4.5
VOLTAGE/PHASE	208/1
MANUFACTURER	LOCHINVAR
MODEL NUMBER	RTJ-040-K
NOTES	
REMARKS	
NOTES	

REMARKS

NOTES

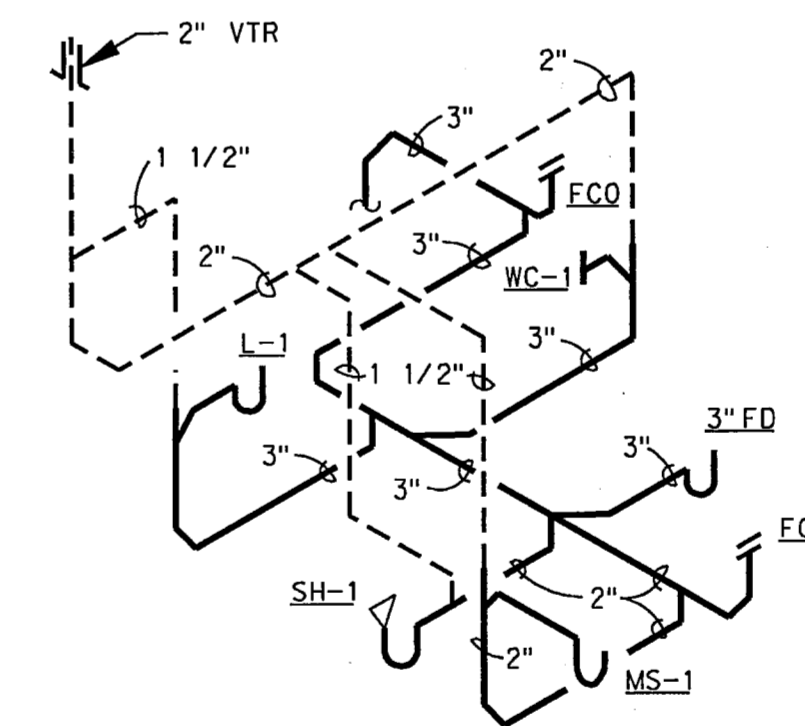
UNIT HEATER (ELECTRIC) SCHEDULE

MARK	UH-1
TYPE	VERTICAL
CFM	1,300
THROW (FEET)	40
MOUNTING HEIGHT (FEET)	12
MINIMUM CAPACITY (BTUH)	68,300
ELECTRIC INPUT (KW)	15
FAN HP	1/10
VOLTAGE/PHASE	480/3
MANUFACTURER	TRANE
MODEL NUMBER	UHEC-203
NOTES	1
REMARKS	
NOTES	

REMARKS

NOTES

- UNIT MOUNTED THERMOSTAT AT 50°F (ADJ.).



P 1

SANITARY RISER DIAGRAM

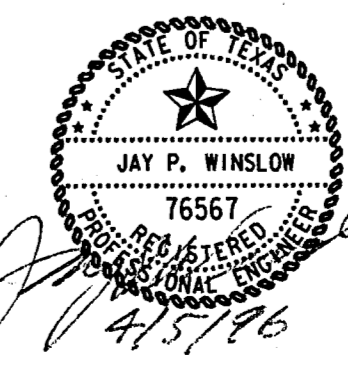
SCALE: NONE

4			
3			
2			
1			
NO.	DATE	REVISION	APPROV.

TOWN OF ADDISON, TEXAS
MIDWAY/BELTLINE SANITARY SEWER
PHASE II
LIFT STATION- HVAC FLOOR PLANS

Carter Burgess

Consultants in Engineering, Architecture,
Planning and the Environment
CARTER & BURGESS, INC.
7950 EMBROOK DRIVE, SUITE 250
DALLAS, TX 75247-4961



Unit	J. Grzelakowski	Scale	1/4" = 1'-0"	Date	04-05-96
Designed	J. Grzelakowski	Checked	J. Lindner	Job No.	93327601D
Drawn		Approved	J. Lindner	Sheet	52 of 63