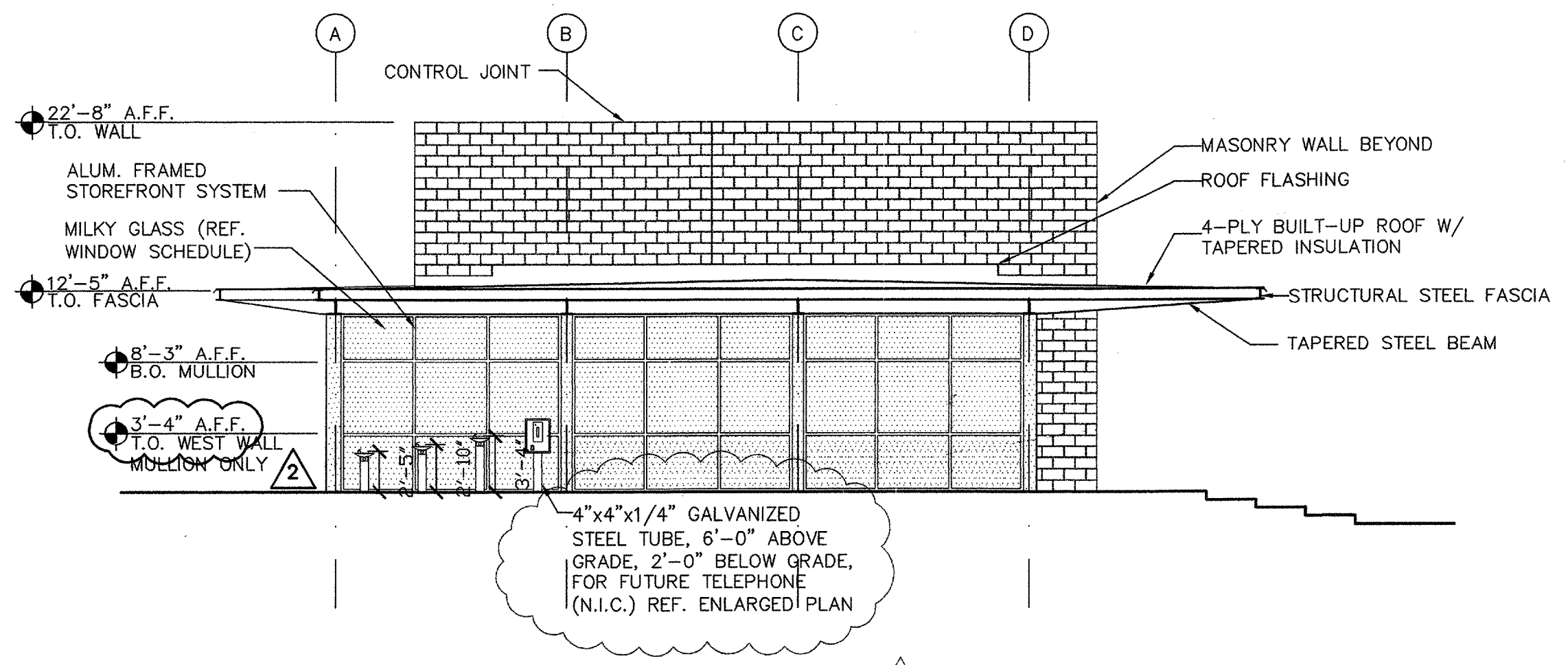
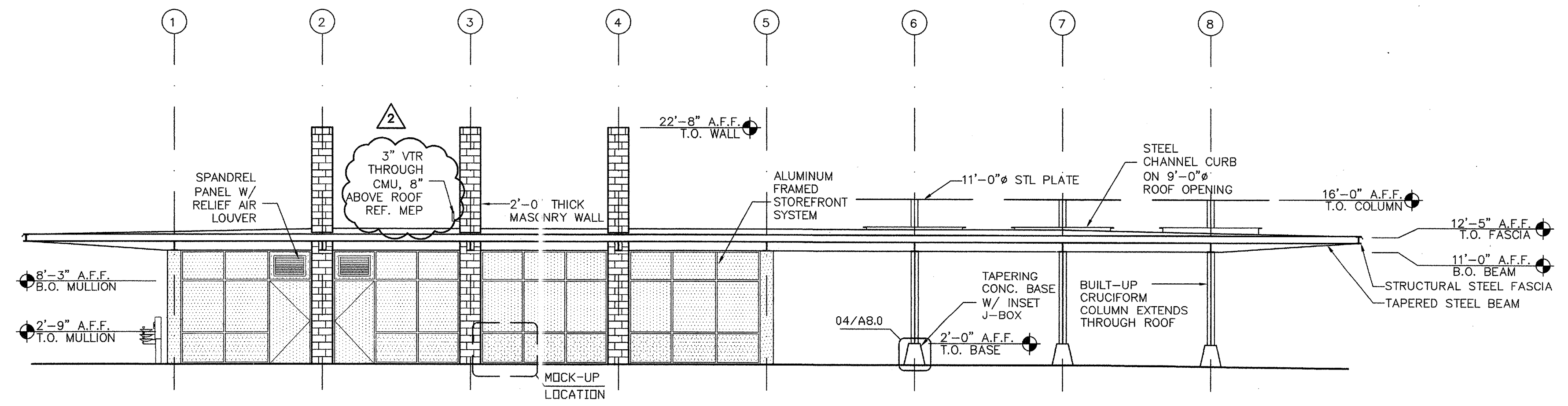


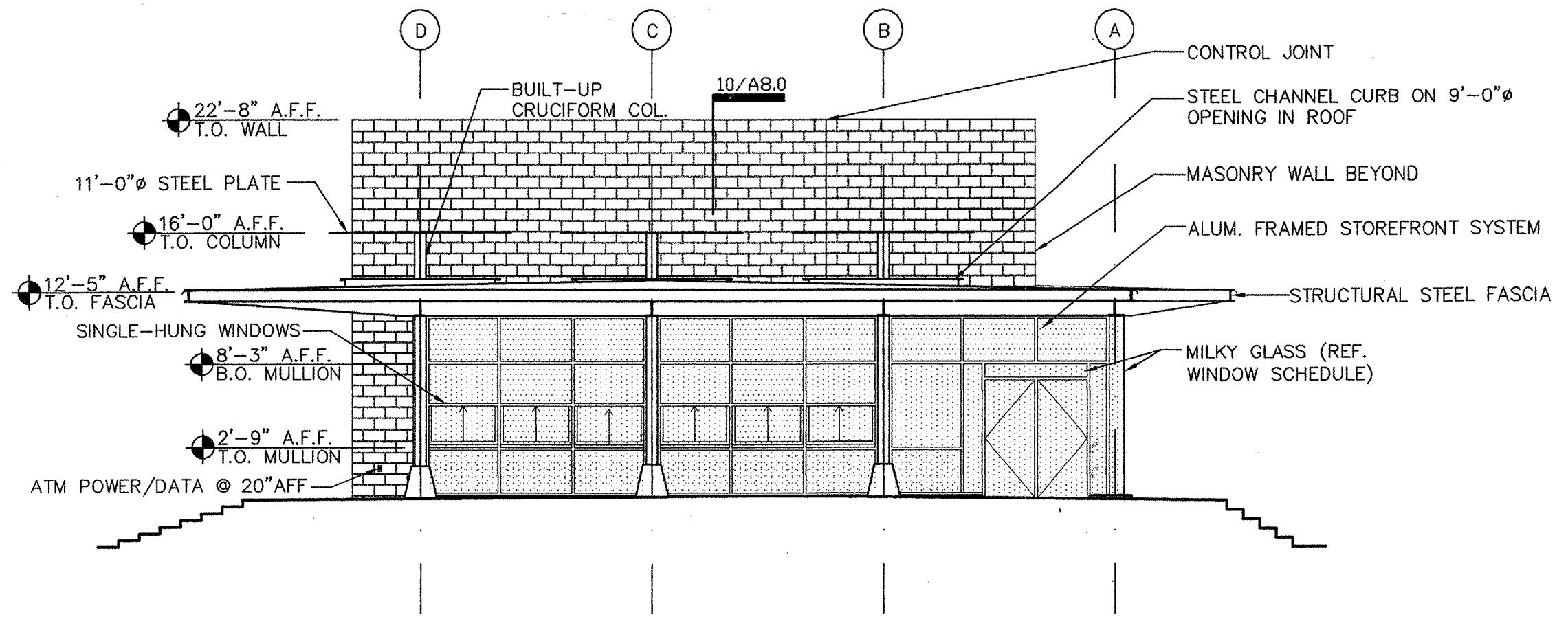
**5 COLUMN LINE 2, EAST SIDE**  
 CMU WALL ELEVATION 1/8"=1'-0"



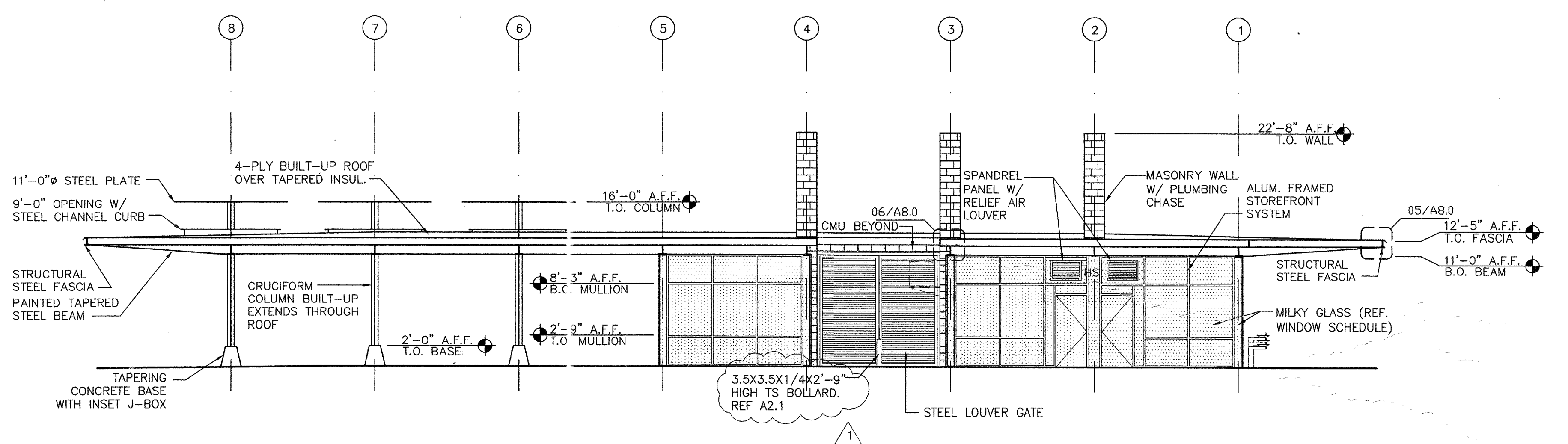
**4 WEST ELEVATION**  
 EXTERIOR ELEVATION 1/8"=1'-0"



**3 SOUTH ELEVATION**  
 EXTERIOR ELEVATION 1/8"=1'-0"



**2 EAST ELEVATION**  
 EXTERIOR ELEVATION 1/8"=1'-0"



**1 NORTH ELEVATION**  
 EXTERIOR ELEVATION 1/8"=1'-0"

date	revision
06/26/02	DD
11/05/02	50% CD
01/23/03	100% CD
02/09/03	ADDENDUM 2
03/04/03	POST-BID REVISION