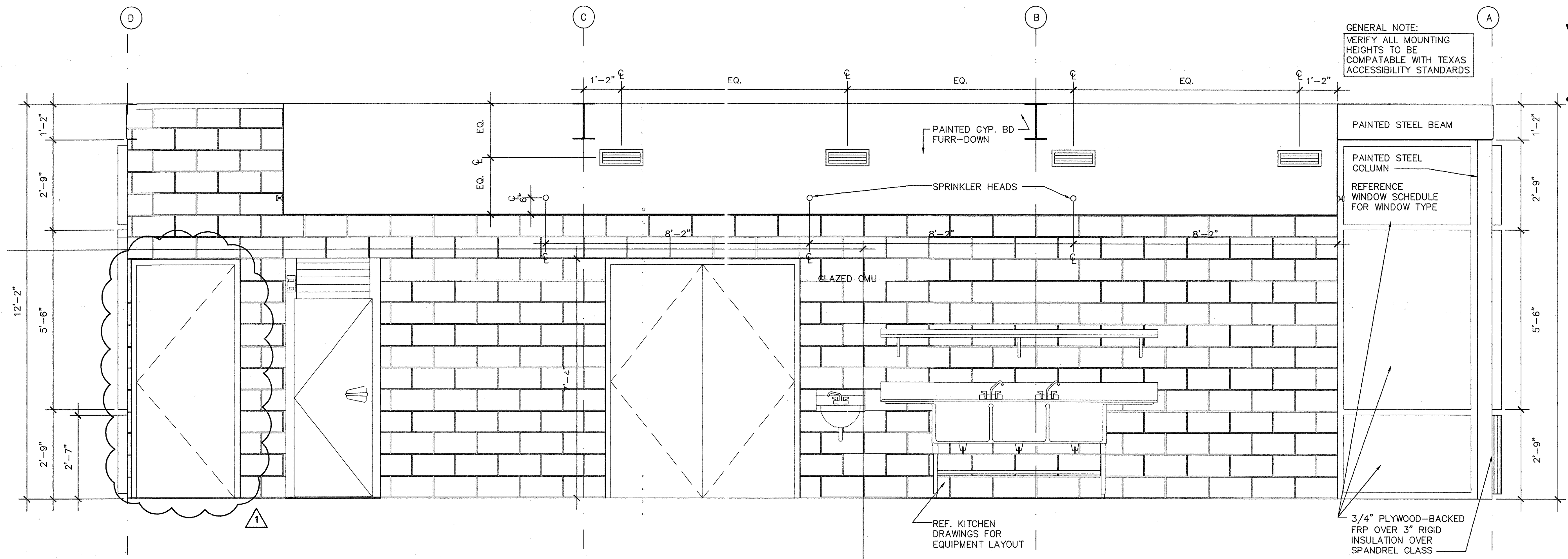
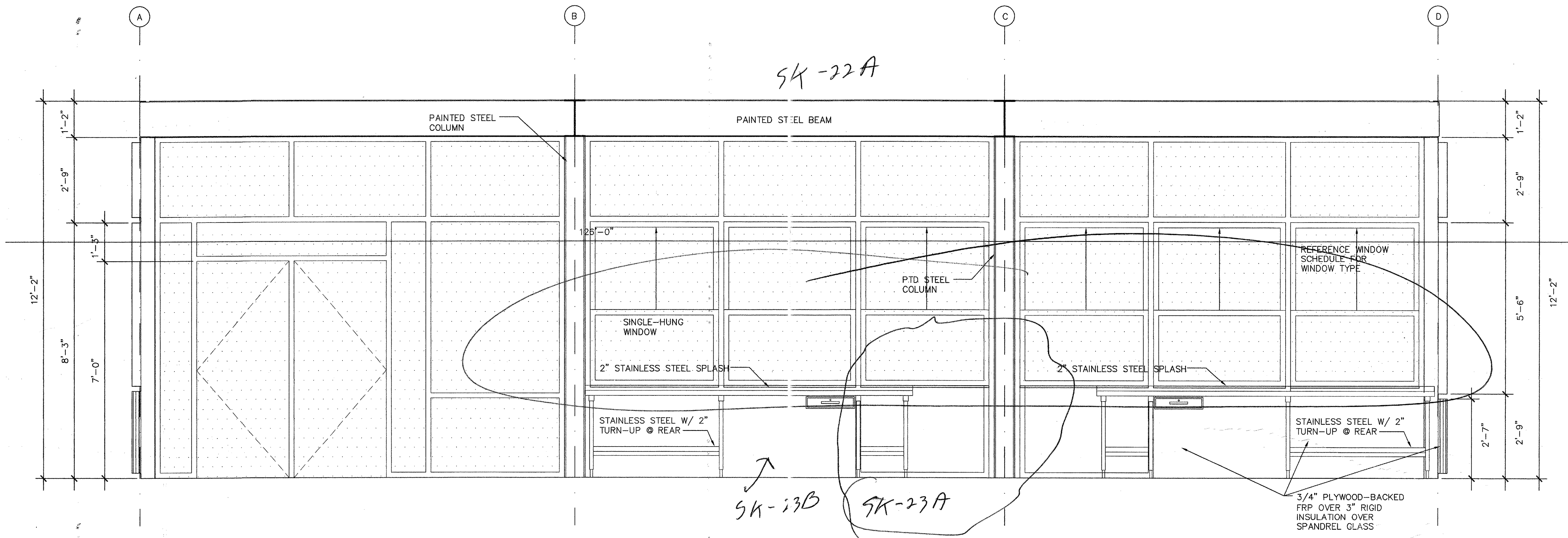


3 SOUTH ELEVATION
KITCHEN
1/2"=1'-0"

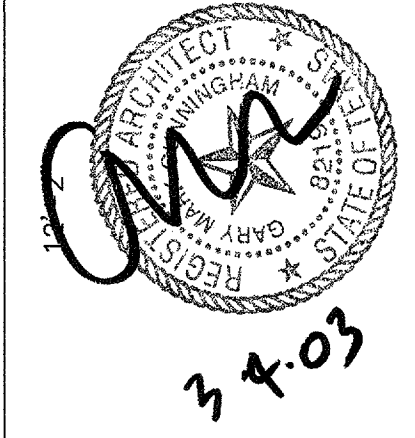


2 WEST ELEVATION
KITCHEN
1/2"=1'-0"



1 EAST ELEVATION
KITCHEN
1/2"=1'-0"

GENERAL NOTE:
VERIFY ALL MOUNTING
HEIGHTS TO BE
COMPATIBLE WITH TEXAS
ACCESSIBILITY STANDARDS



issue	date	description
DD	05/26/02	50% CD
CD	11/05/02	100% CD
CD	01/23/03	POST-BID
REVISION	03/04/03	