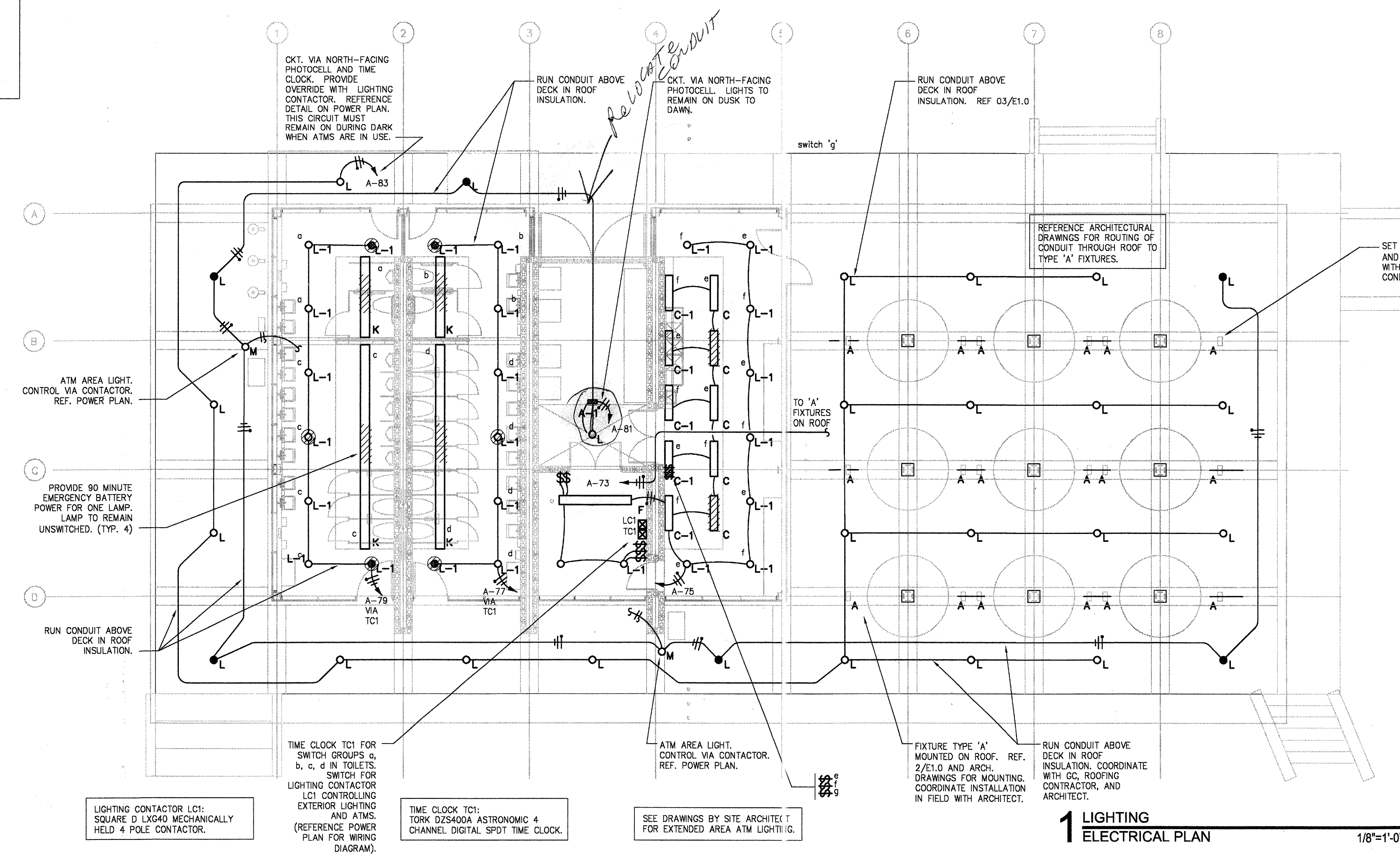
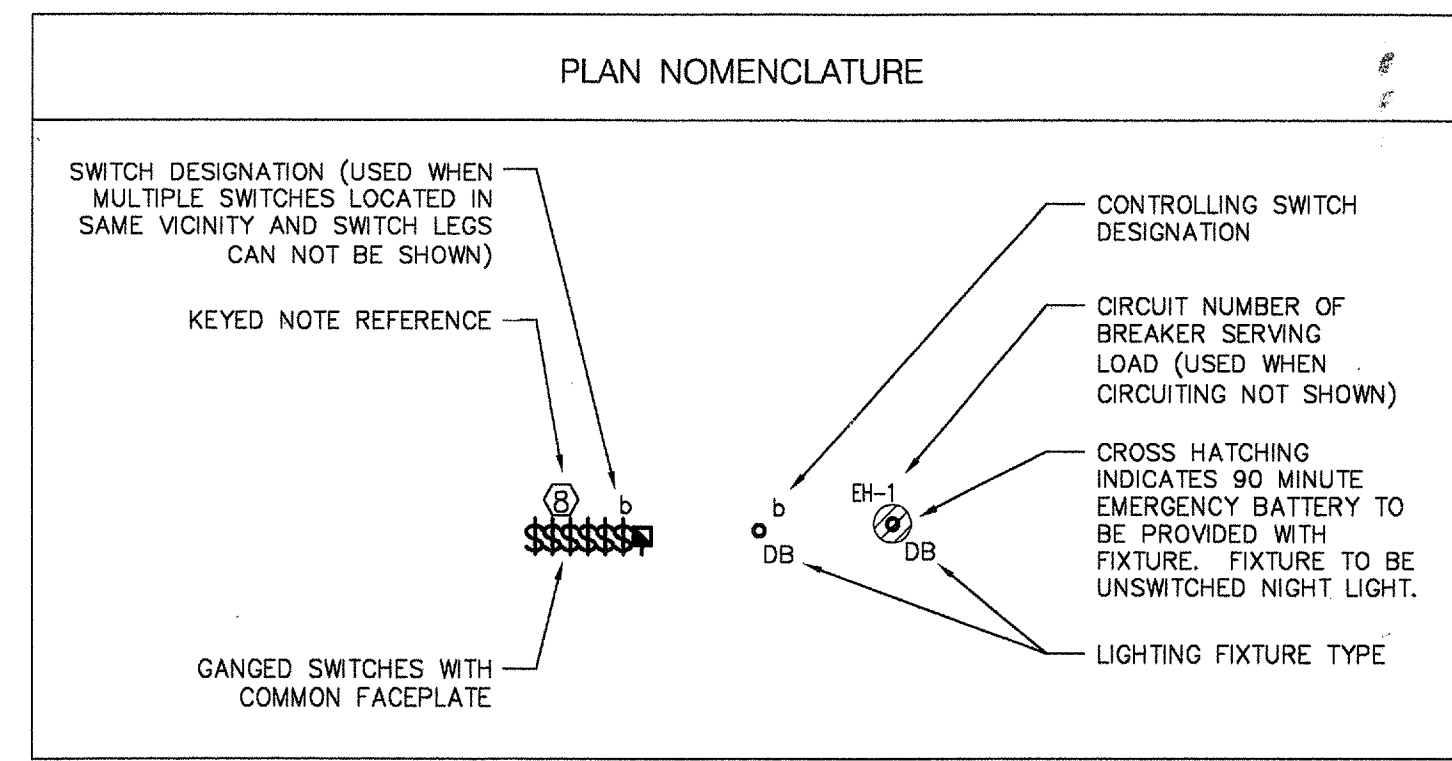
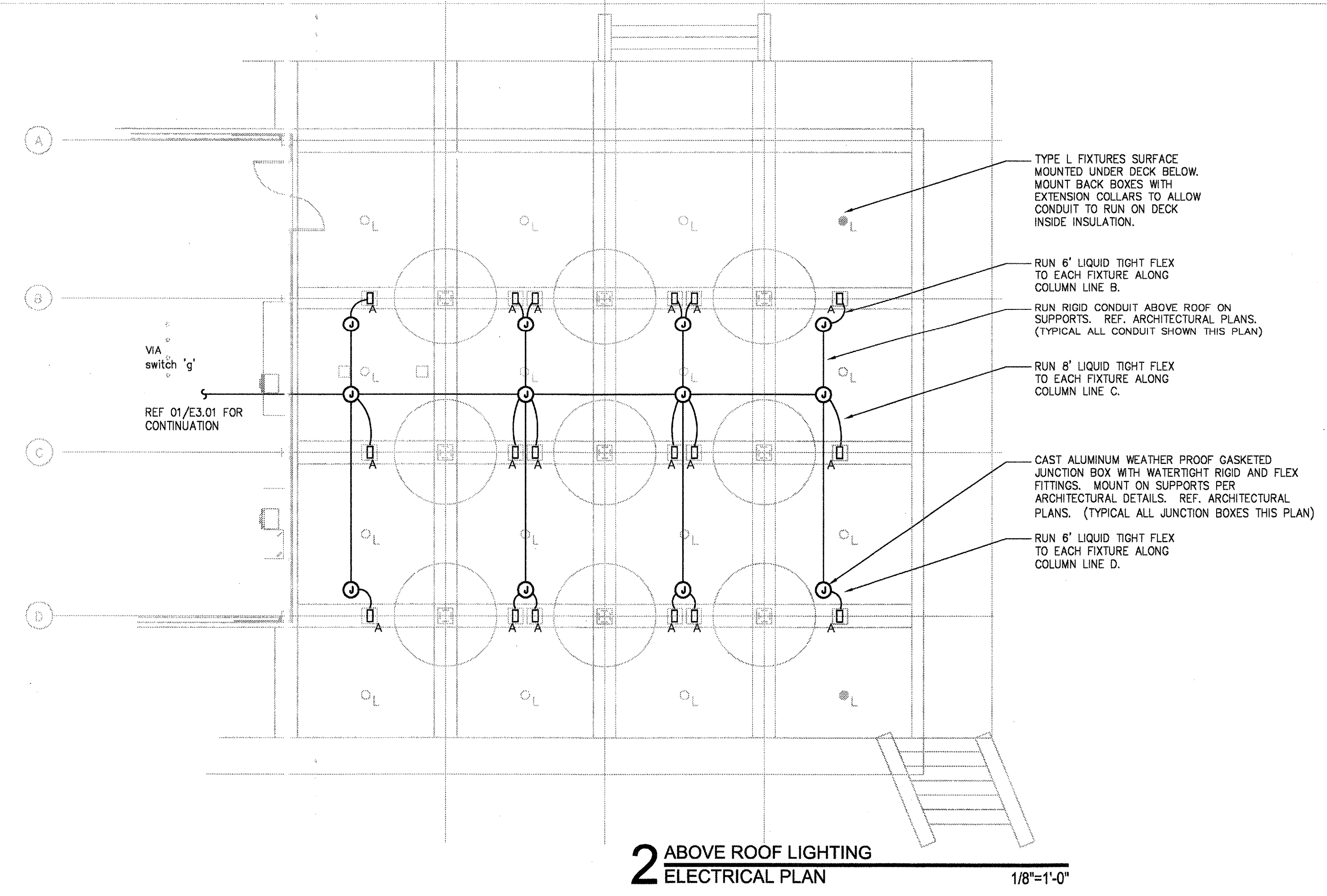
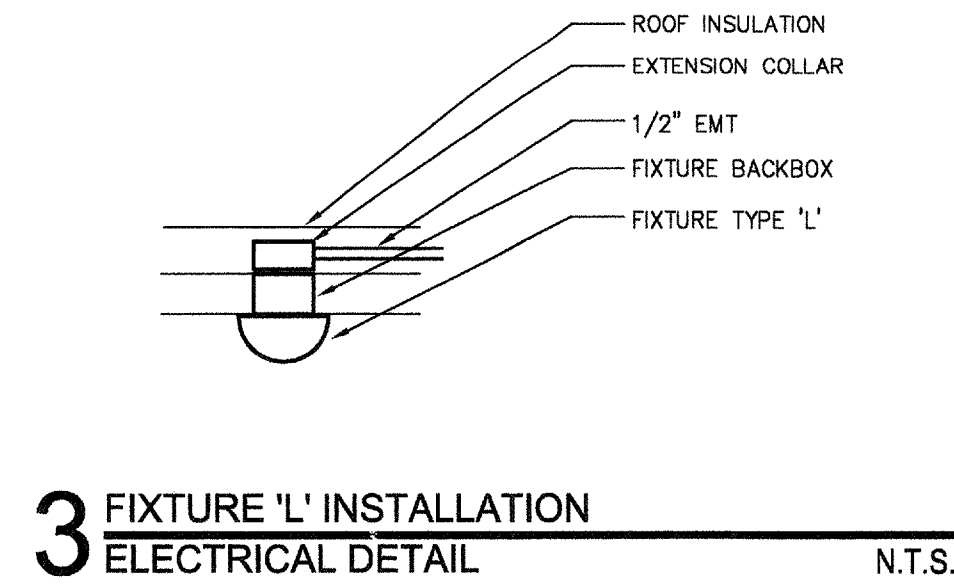


GENERAL ELECTRICAL LIGHTING NOTES

- L1. FIXTURES: ALL FIXTURES ARE TYPE 'A' UNLESS NOTED OTHERWISE. REFERENCE LIGHTING FIXTURE SCHEDULE FOR COMPLETE DESCRIPTION OF EACH FIXTURE TYPE. REFERENCE ARCHITECT'S DRAWINGS FOR EXACT LOCATIONS OF FIXTURES.
- L2. CONTROL: LOWERCASE LETTERS SHOWN ADJACENT TO FIXTURES INDICATE CONTROL BY SWITCHES OR HOMERUNS INDICATED WITH SAME LOWER CASE LETTER. SWITCHES SHOWN NEAR DOORS IN ENCLOSED SPACES CONTROL LIGHTING IN SAME SPACE.
- L3. GANGING: MOUNT ADJACENT SWITCHES GANGED.
- L4. SUPPORT: MOUNT ALL LIGHT FIXTURES ACROSS CEILING TEES OR FROM STRUCTURE ABOVE AS APPROVED BY LOCAL AUTHORITIES. PROVIDE GRID CLIPS IF REQUIRED BY LOCAL AUTHORITIES. IN NO CASE SHALL CEILING TILES OR PLASTER CEILING SUPPORT ANY FIXTURE.
- L5. SWITCHES: ALL LINE VOLTAGE SWITCHES SHALL BE SPECIFICATION GRADE, RATED 20A 120/277V. PROVIDE SWITCHES COMPATIBLE WITH RECEPTACLES BY STYLE AND GRADE. SUBMIT SAMPLES TO ARCHITECT FOR APPROVAL PRIOR TO PURCHASE AND INSTALLATION. VERIFY EXACT LOCATION OF SWITCHES WITH ARCHITECT PRIOR TO INSTALLATION.

SWITCH PLATES:	FVR
SWITCH FACE:	FVR
MANUFACTURER:	FVR
STYLE:	FVR
- L6. PROVIDE LIGHTING CONTACTORS OR RELAYS AS REQUIRED FOR LIGHTING CONTROL AS SHOWN ON PLANS OR DIRECTED BY OWNER. PROVIDE ADDITIONAL SWITCHING CONTROLS IF REQUIRED BY LOCAL ENERGY CODES.
- L7. WIRE FROM JUNCTION BOXES TO FIXTURES OR SWITCHES. ADDITIONAL JUNCTION BOXES AND SWITCHES MAY BE REQUIRED BEYOND THOSE SHOWN. TYPICAL SWITCHING SHALL BE LOCATED INSIDE EACH ROOM NEAR THE STRIKE SIDE OF EACH DOOR.
- L8. CROSS HATCHED FIXTURES INDICATE EMERGENCY/NIGHT LIGHT FIXTURES. PROVIDE BODINE B50 BATTERY PACK (OR AS SPECIFIED IN LIGHTING FIXTURE SCHEDULE) FOR ALL EMERGENCY/NIGHT LIGHT FLUORESCENT FIXTURES NOT SERVED BY EMERGENCY POWER. PROVIDE QUARTZ RESTRIKE ACCESSORY WITH RELAY FOR ALL EMERGENCY AND EMERGENCY/NIGHT LIGHT HID FIXTURES, IF ANY.
- L9. EMERGENCY EGRESS LIGHTING AND EXIT LIGHTS SHALL COMPLY WITH NFPA 101, ALL LOCAL CODES, AND NATIONAL CODES AND REQUIREMENTS. PROVIDE ALLOWANCE FOR 1 ADDITIONAL EMERGENCY EXIT LIGHTS, AND 1 ADDITIONAL EMERGENCY BATTERY PACK LIGHTS. IF REQUIRED, ADDITIONAL LIGHTS ARE TO BE LOCATED AS DETERMINED BY LOCAL AUTHORITIES AND ARCHITECT.
- L10. COORDINATE ROOF PENETRATIONS OF CONDUIT FOR LIGHTING WITH ARCHITECT. REFERENCE ARCHITECTURAL DRAWINGS FOR ROUTING AND PLACEMENT OF BOXES AND CONDUIT FOR EXTERIOR FIXTURES. PROVIDE WATERTIGHT JUNCTION BOXES AND FIELD VERIFY LOCATION AND PLACEMENT OF BOXES. USE WATERTIGHT FLEXIBLE CONDUIT FOR TYPE 'A' FIXTURES. COORDINATE LENGTH AND ARRANGEMENT OF CONDUIT AND CONNECTIONS FOR TYPE 'A' FIXTURES IN FIELD WITH ARCHITECT.



TYPE L FIXTURES SURFACE MOUNTED UNDER DECK BELOW. MOUNT BACK BOXES WITH EXTENSION COLLARS TO ALLOW CONDUIT TO RUN ON DECK INSIDE INSULATION.

RUN 6" LIQUID TIGHT FLEX TO EACH FIXTURE ALONG COLUMN LINE B.

RUN RIGID CONDUIT ABOVE ROOF ON SUPPORTS. REF. ARCHITECTURAL PLANS. (TYPICAL ALL CONDUIT SHOWN THIS PLAN)

RUN 8" LIQUID TIGHT FLEX TO EACH FIXTURE ALONG COLUMN LINE C.

CAST ALUMINUM WEATHER PROOF GASKETED JUNCTION BOX WITH WATERTIGHT RIGID AND FLEX FITTINGS. MOUNT ON SUPPORTS PER ARCHITECTURAL DETAILS. REF. ARCHITECTURAL PLANS. (TYPICAL ALL JUNCTION BOXES THIS PLAN)

RUN 6" LIQUID TIGHT FLEX TO EACH FIXTURE ALONG COLUMN LINE D.

CT. VIA NORTH-FACING PHOTOCELL AND TIME CLOCK. PROVIDE OVERRIDE WITH LIGHTING CONTACTOR. REFERENCE DETAIL ON POWER PLAN. THIS CIRCUIT MUST REMAIN ON DURING DARK WHEN ATMS ARE IN USE.

RUN CONDUIT ABOVE DECK IN ROOF INSULATION.

CT. VIA NORTH-FACING PHOTOCELL. LIGHTS TO REMAIN ON DUSK TO DAWN.

RUN CONDUIT ABOVE DECK IN ROOF INSULATION. REF 03/E1.0

switch 'g'

REFERENCE ARCHITECTURAL DRAWINGS FOR ROUTING OF CONDUIT THROUGH ROOF TO TYPE 'A' FIXTURES.

SET WATERTIGHT J-BOXES AND BRANCH TO 'A' FIXTURES WITH LIQUID TIGHT FLEXIBLE CONDUIT. SEE NOTE L10.

ATM AREA LIGHT. CONTROL VIA CONTACTOR. REF. POWER PLAN.

PROVIDE 90 MINUTE EMERGENCY BATTERY POWER FOR ONE LAMP. LAMP TO REMAIN UNSWITCHED. (TYP. 4)

RUN CONDUIT ABOVE DECK IN ROOF INSULATION.

TIME CLOCK TC1 FOR SWITCH GROUPS a, b, c, d IN TOILETS. SWITCH FOR LIGHTING CONTACTOR LC1 CONTROLLING EXTERIOR LIGHTING AND ATMS. (REFERENCE POWER PLAN FOR WIRING DIAGRAM).

TIME CLOCK TC1: TORX D2S400A ASTRONOMIC 4 CHANNEL. DIGITAL SPDT TIME CLOCK.

SEE DRAWINGS BY SITE ARCHITECT FOR EXTENDED AREA ATM LIGHTING.

FIXTURE TYPE 'A' MOUNTED ON ROOF. REF. 2/E1.0 AND ARCH. DRAWINGS FOR MOUNTING. COORDINATE INSTALLATION IN FIELD WITH ARCHITECT.

RUN CONDUIT ABOVE DECK IN ROOF INSULATION. COORDINATE WITH CC, ROOFING CONTRACTOR, AND ARCHITECT.

REFERENCE RDP FOR LUMINAIRE TYPES. REFERENCE ARCHITECTURAL DRAWINGS AND SPECIFICATIONS FOR LIGHTING FIXTURE SCHEDULE.

MEP SUB-CONTRACTORS ARE RESPONSIBLE FOR COORDINATION WITH ARCHITECTURAL PLANS FOR ALL WORK. REFERENCE GENERAL ELECTRICAL NOTE G7/E3.0.

REFERENCE PANEL BOARD SCHEDULES FOR ADDITIONAL LOAD AND CIRCUIT INFORMATION.

date	08/26/02
issue	10/31/02
DD	50%
CD	95%

E1.0
ELECTRICAL