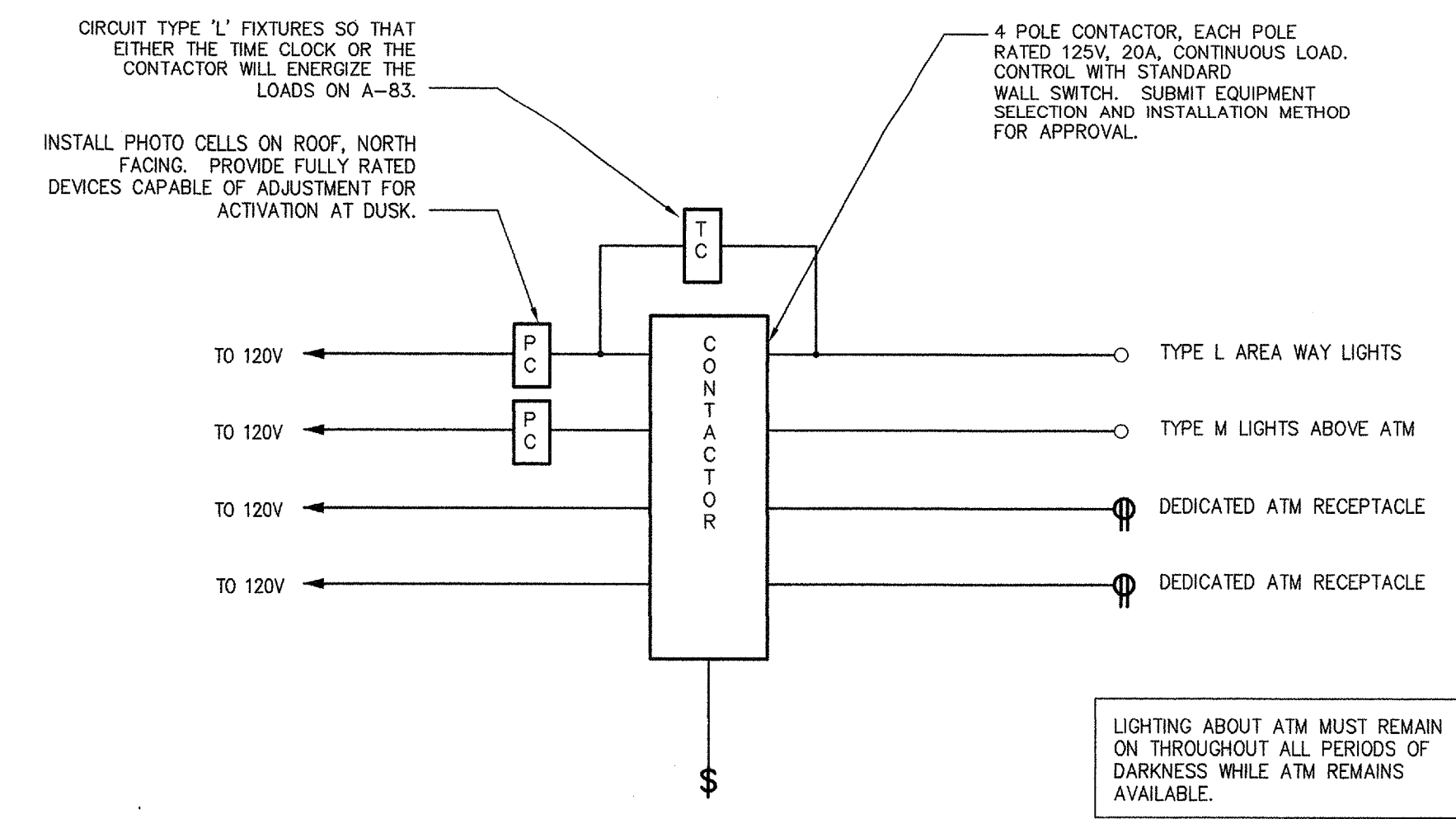


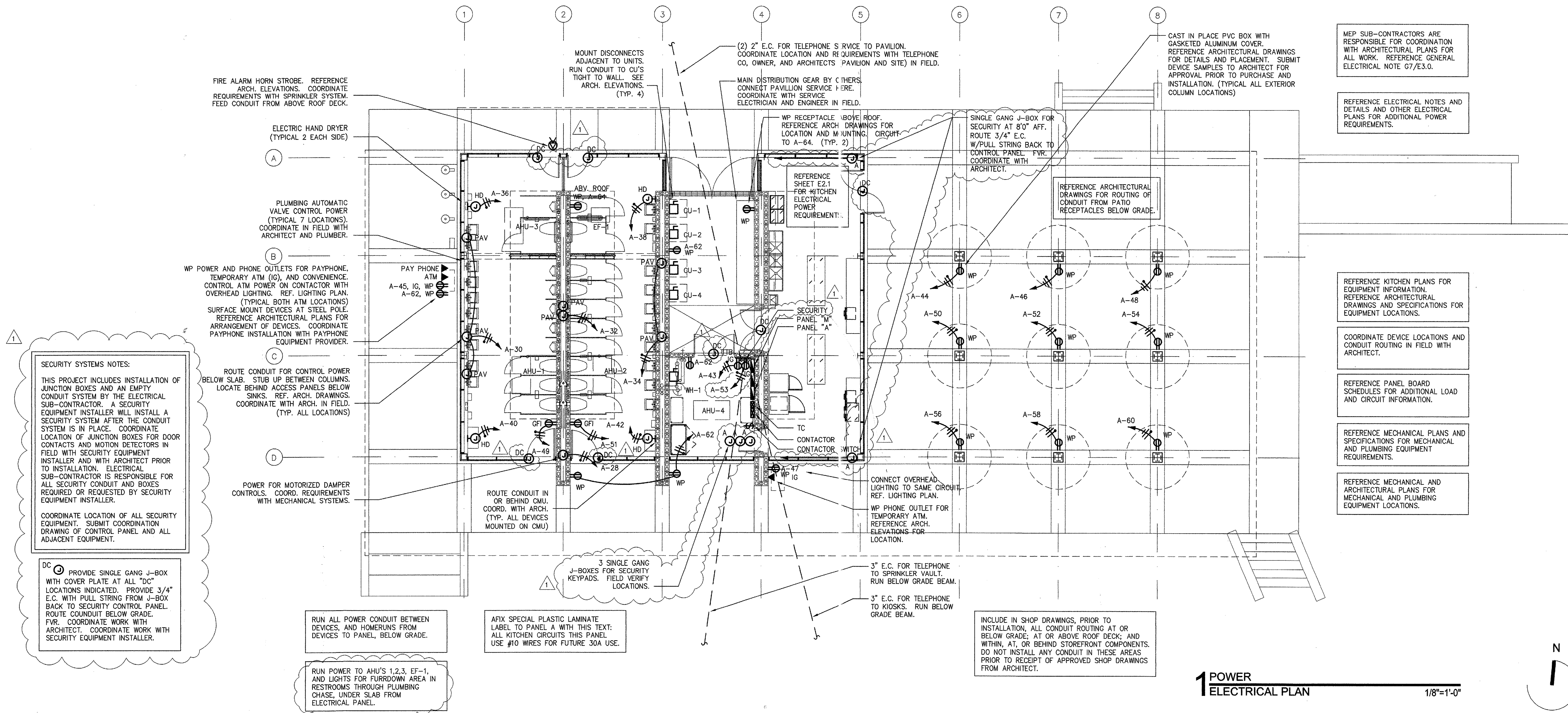
MECHANICAL EQUIPMENT SCHEDULE																			
MECHANICAL DATA										ELECTRICAL DATA									
PLAN MARK	EQUIPMENT DESCRIPTION/CATALOG NO.	LOCATION	VOLTS	PHASE	MOTOR HP	HEAT RLA FLA	HEAT KW	AMPS	MCA	STARTER	DISCONNECT	PANEL SERVED	MAX DCBP	FRM	CIRCUIT	WIRES	COND	COMMENTS	
AHU-1	AHU W/ HEAT FAN HEAT		208	3	0.5	2.2	13	36.1	48	M	00	E 60	50	50	M	1/3/5	3 #6, 1 #10G	1	
AHU-2	AHU W/ HEAT FAN HEAT		208	3	0.5	2.2	9	24.1	33	M	00	E 60	35	35	M	7/9/11	3 #8, 1 #10G	0.75	
AHU-3	AHU W/ HEAT FAN HEAT		208	3	0.5	2.2	9	24.1	33	M	00	E 60	35	35	M	13/15/17	3 #8, 1 #10G	0.75	
AHU-4	AHU W/ HEAT FAN HEAT		208	3	0.8	3.1	19	51.9	69	M	00	E 100	80	70	M	19/21/23	3 #4, 1 #8G	1.25	
CU-1	COMPRESSOR CONDENSER FAN		208	3			16.0		22	M		E 30	35	30	M	2/4/6	3 #10, 1 #10G	0.75	
							0.0												
							1.9												
							17.9												
CU-2	COMPRESSOR CONDENSER FAN		208	3			11.0		15	M		E 30	25	20	M	18/10/12	3 #12, 1 #10G	0.5	
							0.0												
							1.6												
							12.6												
CU-3	COMPRESSOR CONDENSER FAN		208	3			11.0		15	M		E 30	25	20	M	14/16/18	3 #12, 1 #10G	0.5	
							0.0												
							1.6												
							12.6												
CU-4	COMPRESSOR CONDENSER FAN		208	3			19.0		26	M		E 60	40	35	M	20/22/24	3 #10, 1 #10G	0.75	
							0.0												
							1.9												
							20.9												
EF-1	MOTOR		120	1	0.8	13.2		17		E	M	E 30	30	20	A	67	2 #12, 1 #10G	0.5	
WH-1	WATER HEATER STORAGE		208	3			18	50.0	62			E	70	70	M	125/27/291	3 #4, 1 #8G	11.25	

JOB NAME: PAVILION - LOCATION: ADDISON - JOB NUMBER: 02098 - MECHANICAL ENGINEER: MBP - ELECTRICAL: VMS - FILE NAME: 02098MES.WG1 22-Dec-2002

SK #003C



2 ATM LIGHTING AND POWER WIRING DIAGRAM N.T.S.



SECURITY SYSTEMS NOTES:
 THIS PROJECT INCLUDES INSTALLATION OF JUNCTION BOXES AND AN EMPTY CONDUIT SYSTEM BY THE ELECTRICAL SUB-CONTRACTOR. A SECURITY EQUIPMENT INSTALLER WILL INSTALL A SECURITY SYSTEM AFTER THE CONDUIT SYSTEM IS IN PLACE. COORDINATE LOCATION OF JUNCTION BOXES FOR DOOR CONTACTS AND MOTION DETECTORS IN FIELD WITH SECURITY EQUIPMENT INSTALLER AND WITH ARCHITECT PRIOR TO INSTALLATION. ELECTRICAL SUB-CONTRACTOR IS RESPONSIBLE FOR ALL SECURITY CONDUIT AND BOXES REQUIRED OR REQUESTED BY SECURITY EQUIPMENT INSTALLER.
 COORDINATE LOCATION OF ALL SECURITY EQUIPMENT. SUBMIT COORDINATION DRAWING OF CONTROL PANEL AND ALL ADJACENT EQUIPMENT.

ROUTE CONDUIT FOR CONTROL POWER BELOW SLAB. STUB UP BETWEEN COLUMNS. LOCATE BEHIND ACCESS PANELS BELOW SINKS. REF. ARCH. DRAWINGS. COORDINATE WITH ARCH. IN FIELD. (TYP. ALL LOCATIONS)

POWER FOR MOTORIZED DAMPER CONTROLS. COORD. REQUIREMENTS WITH MECHANICAL SYSTEMS.

RUN ALL POWER CONDUIT BETWEEN DEVICES, AND HOMERUNS FROM DEVICES TO PANEL, BELOW GRADE.

RUN POWER TO AHU'S 1,2,3, EF-1, AND LIGHTS FOR FURROWDOWN AREA IN RESTROOMS THROUGH PLUMBING CHASE, UNDER SLAB FROM ELECTRICAL PANEL.

AFIX SPECIAL PLASTIC LAMINATE LABEL TO PANEL A WITH THIS TEXT: ALL KITCHEN CIRCUITS THIS PANEL. USE #10 WIRES FOR FUTURE 30A USE.

INCLUDE IN SHOP DRAWINGS, PRIOR TO INSTALLATION, ALL CONDUIT ROUTING AT OR BELOW GRADE, AT OR ABOVE ROOF DECK, AND WITHIN, AT, OR BEHIND STOREFRONT COMPONENTS. DO NOT INSTALL ANY CONDUIT IN THESE AREAS PRIOR TO RECEIPT OF APPROVED SHOP DRAWINGS FROM ARCHITECT.

MEP SUB-CONTRACTORS ARE RESPONSIBLE FOR COORDINATION WITH ARCHITECTURAL PLANS FOR ALL WORK. REFERENCE GENERAL ELECTRICAL NOTE G7/E3.0.

REFERENCE ELECTRICAL NOTES AND DETAILS AND OTHER ELECTRICAL PLANS FOR ADDITIONAL POWER REQUIREMENTS.

REFERENCE KITCHEN PLANS FOR EQUIPMENT INFORMATION. REFERENCE ARCHITECTURAL DRAWINGS AND SPECIFICATIONS FOR EQUIPMENT LOCATIONS.

COORDINATE DEVICE LOCATIONS AND CONDUIT ROUTING IN FIELD WITH ARCHITECT.

REFERENCE PANEL BOARD SCHEDULES FOR ADDITIONAL LOAD AND CIRCUIT INFORMATION.

REFERENCE MECHANICAL PLANS AND SPECIFICATIONS FOR MECHANICAL AND PLUMBING EQUIPMENT REQUIREMENTS.

REFERENCE MECHANICAL AND ARCHITECTURAL PLANS FOR MECHANICAL AND PLUMBING EQUIPMENT LOCATIONS.

1 POWER ELECTRICAL PLAN 1/8"=1'-0"

date 06/26/02
 10/31/02
 01/23/03
 01/31/03
 issue DD 50% CD 95% CD APPENDIX 1

E2.0 ELECTRICAL

cunningham architects
 918 Dragon Street
 Dallas, Texas 75207
 V 214.915.0900
 F 214.915.0901
 M E P
 MYRDIN
 HYDRON CONSULTING SERVICES
 918 Dragon Street Dallas, Texas 75207 me@myrdin.com
 M 214.915.0906 fax 214.915.0901 MEF 2/4/05/02/09
 MEP SYSTEMS DESIGN AND ENGINEERING, INC.

Addison Arts and Events Pavilion
 Addison, Texas