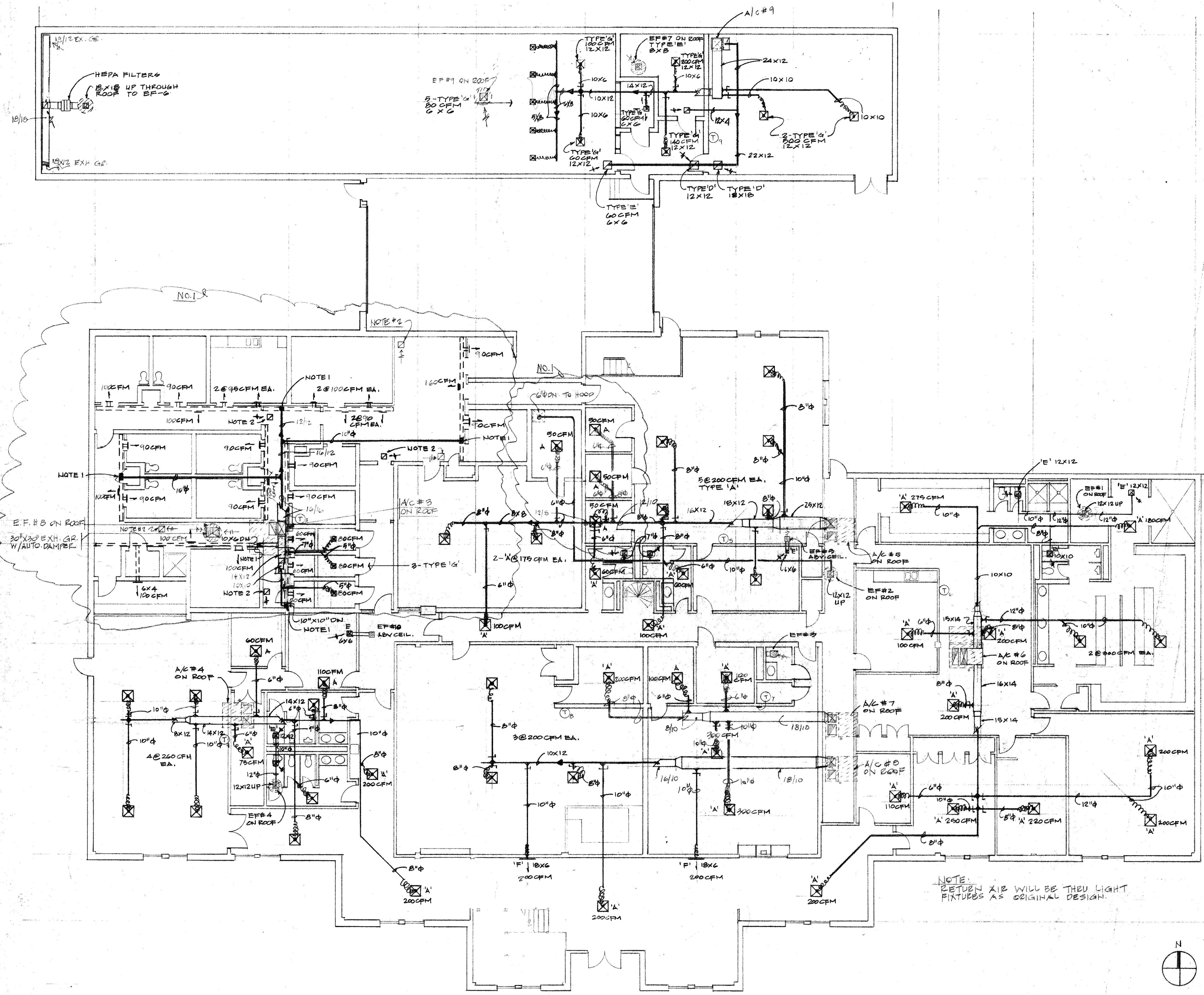


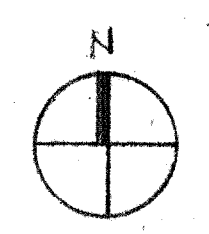
NOTES

1. CONNECT TO CHANNEL BY JAIL EQUIPMENT CONTRACTOR.
2. 12" X 12" R.A. THROUGH GLAB CEILING. (TYP OF 6)



NOTE:  
RETURN AIR WILL BE THROUGH LIGHT FIXTURES AS ORIGINAL DESIGN.

11/1/03  
11/1/03



SOUTHERN MECHANICAL, INC. 1917 COPPER ST. GARLAND, TX 75042		
SCALE: 1/8" = 1'-0"	APPROVED BY:	DRAWN BY: DE
DATE: 12-14-03		REVISED
A NEW POLICE FACILITY FOR THE TOWN OF ADDISON 4799 AIRPORT PKWY. ADDISON, TX 75240		
GROUND FLOOR PLAN - MECHANICAL		DRAWING NUMBER: M-2 OF 2

AS BUILT DRAWINGS: 7/15/04  
REVISED: 3/25/03 NO. 1