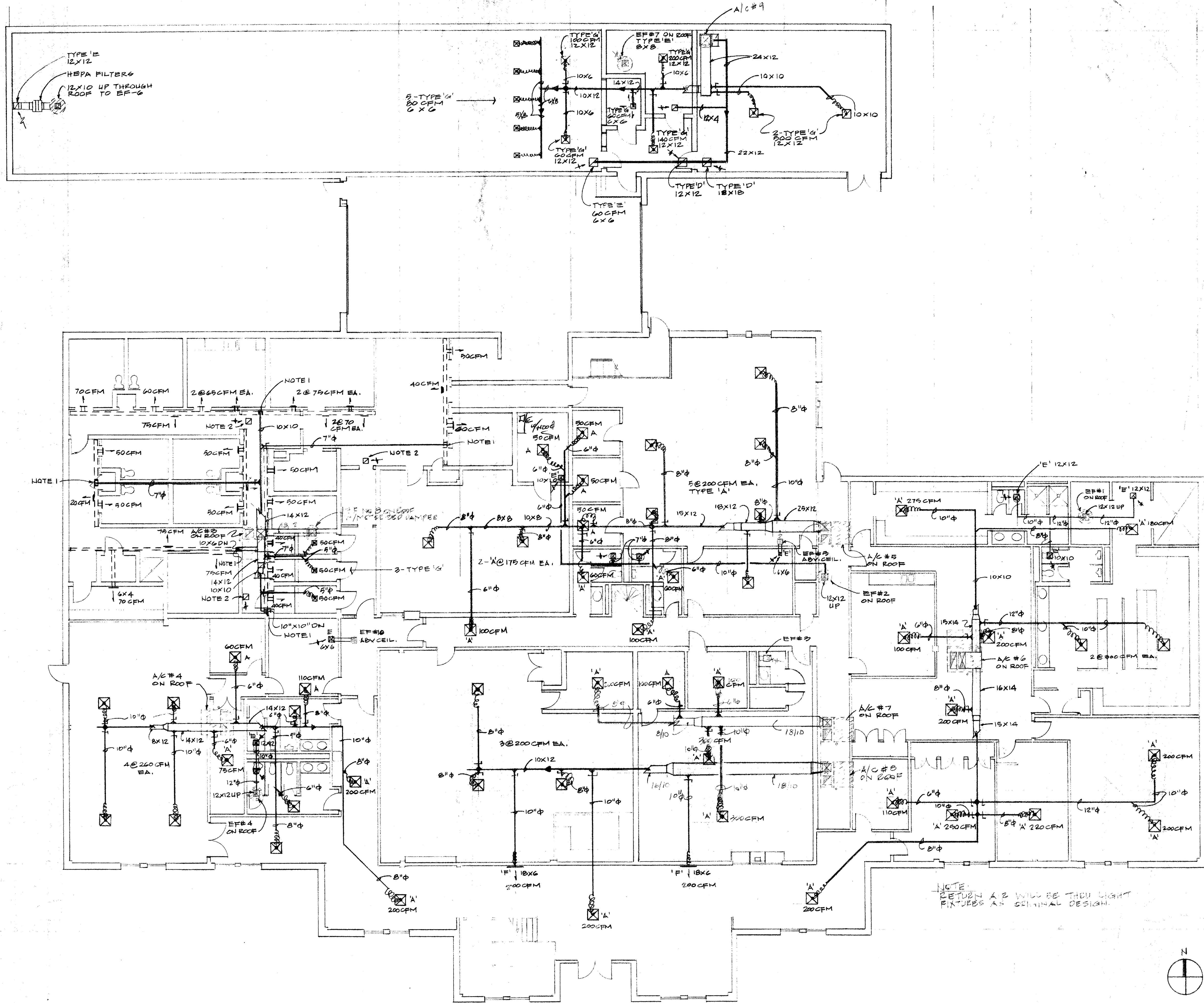


NOTES

1. CONNECT TO CHANNEL BY JAIL EQUIPMENT CONTRACTOR.
2. 10'X10' R.A. THROUGH GLASS CEILING.



SOUTHERN MECHANICAL, INC.			
1917 COPPER ST. GARLAND, TX 75042			
TEL: 409-487-0304			
SCALE: 1/8"=1'-0"	APPROVED BY:	DRAWN BY: [Signature]	
DATE: 12.14.85		REVISED:	
A NEW POLICE FACILITY FOR THE TOWN OF ADDISON			
4799 AIRPORT PKWY. ADDISON, TX 75240			
GROUND FLOOR PLAN-MECHANICAL			DRAWING NUMBER: M-2