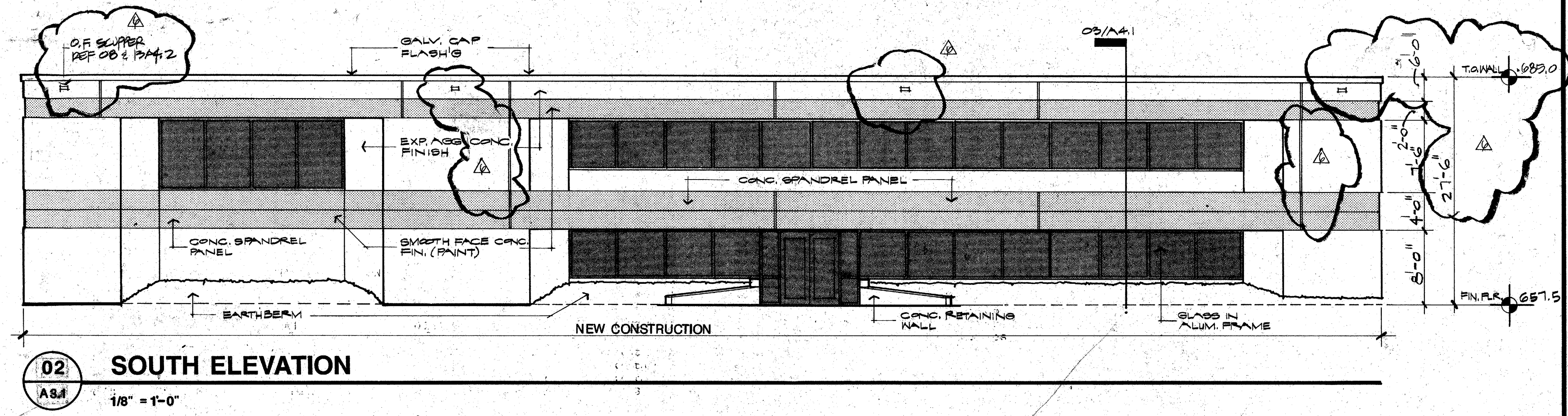
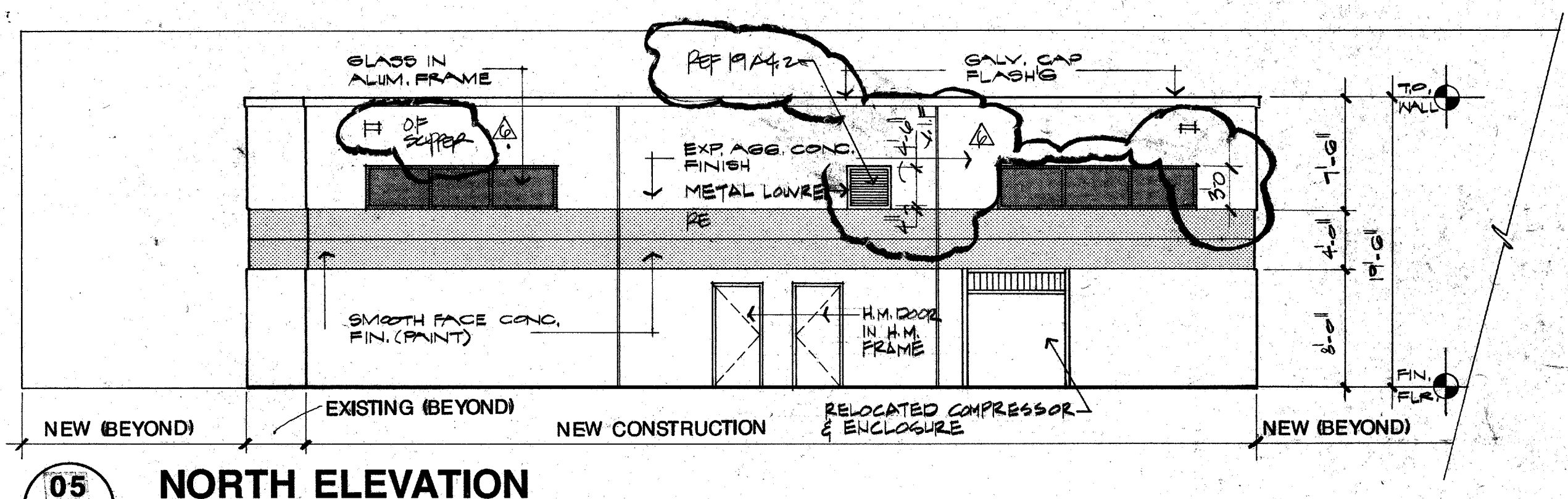


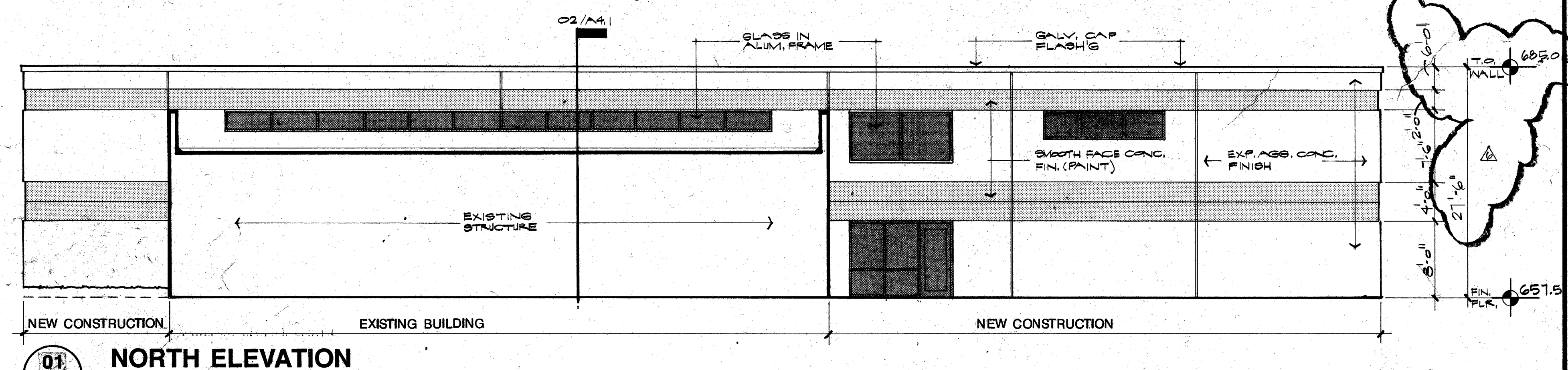
A B C D E F G H I J K L M N O P Q R S T U V W X Y Z AA BB CC DD EE FF GG HH II JJ KK LL MM NN OO PP QQ RR SS TT UUU VV WW XX YY ZZ



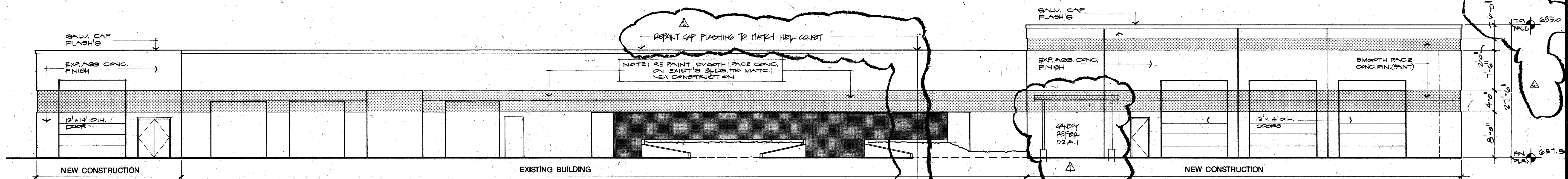
**02 SOUTH ELEVATION**  
 1/8" = 1'-0"



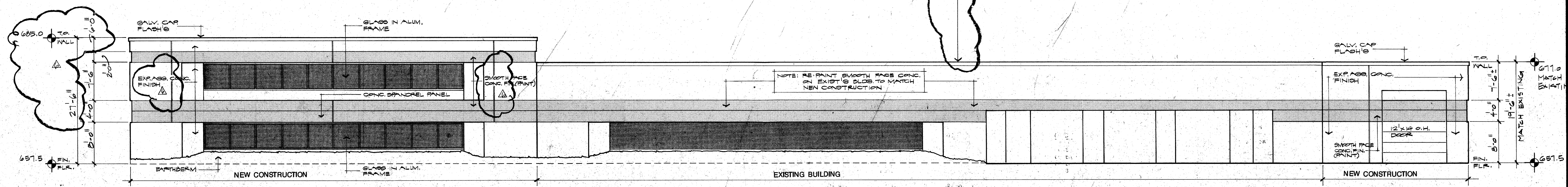
**05 NORTH ELEVATION**  
 1/8" = 1'-0"



**01 NORTH ELEVATION**  
 1/8" = 1'-0"



**04 WEST ELEVATION**  
 1/8" = 1'-0"



**03 EAST ELEVATION**  
 1/8" = 1'-0"

**EDI ARCHITECTS, INC.**  
 ARCHITECTURE PLANNING ENGINEERING INTERIOR DESIGN  
 AMERICAN BANK TOWER  
 1001 N. GULF FRIERIE DRIVE  
 SUITE 1000  
 DALLAS, TEXAS 75201  
 214 / 750-1958

---

**TOWN OF ADDISON**

---

**ADDITION TO PUBLIC WORKS SERVICE CENTER**  
 Addison Texas  
 Westgrove Road

---

DATE: 5-16-88  
 11 JUNE 88  
 24 JULY 1988 - BID  
 Rev 6/1/002/86

---

SHEET NO. 1  
 OF SHEETS  
 JOB NO. 851-137