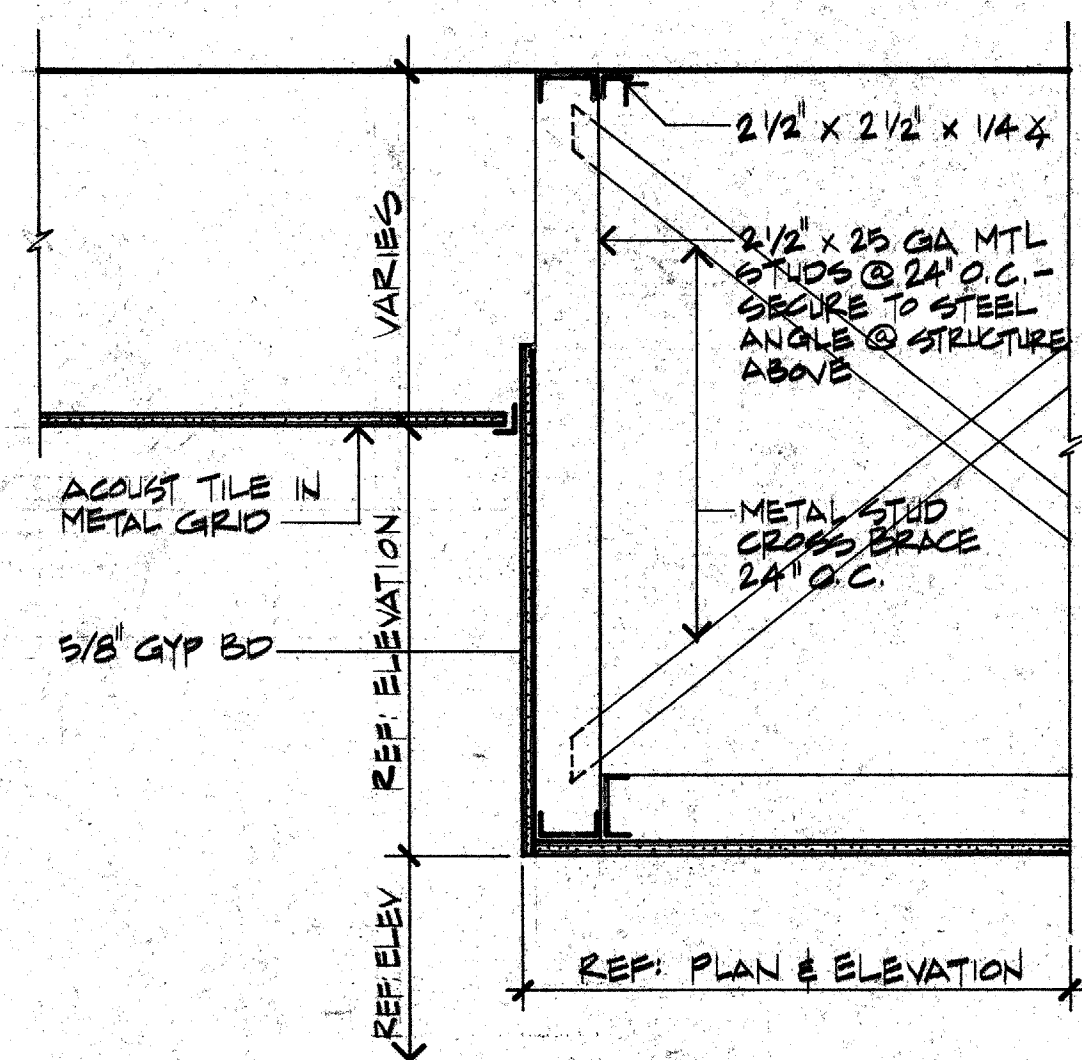
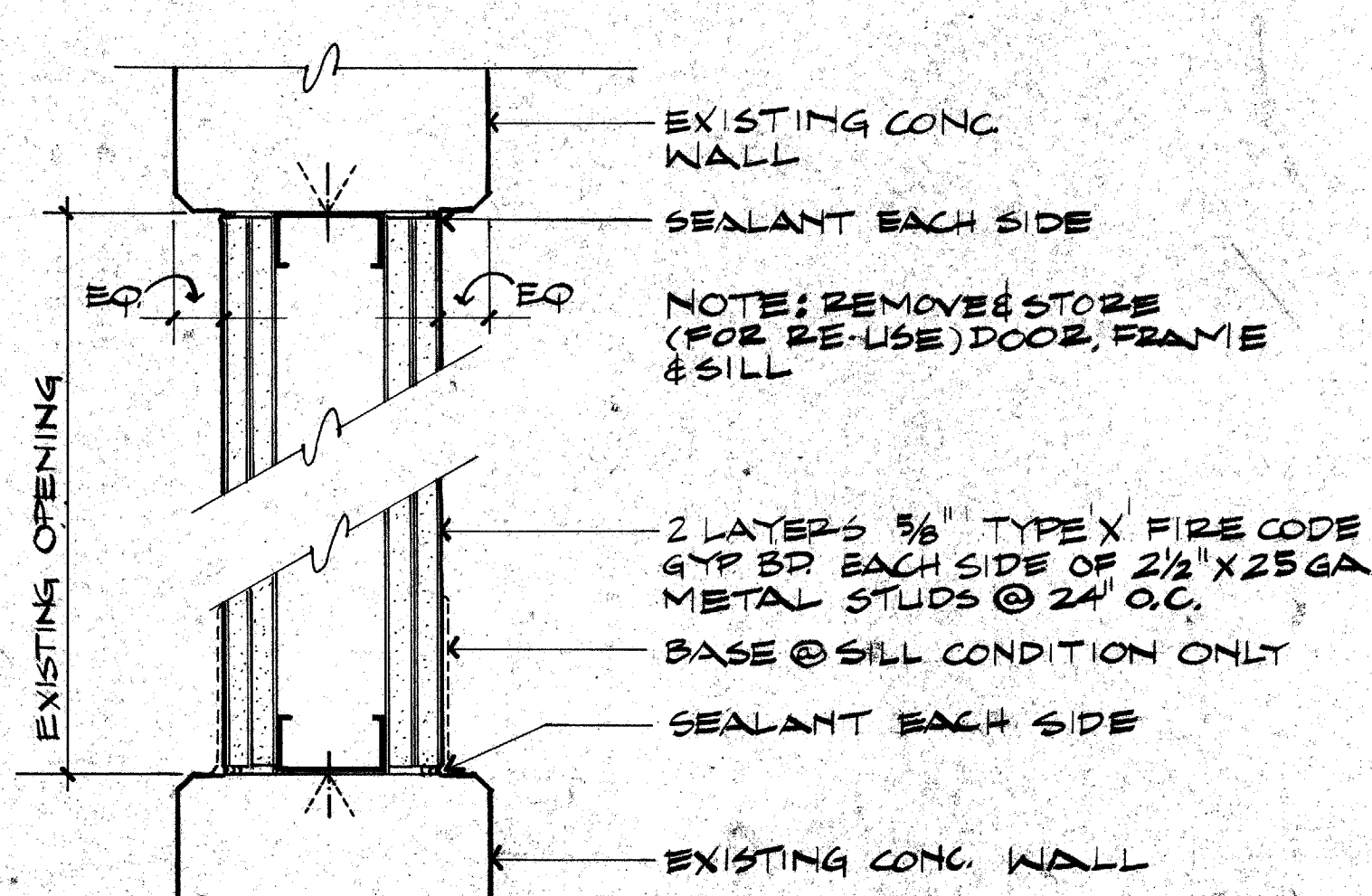


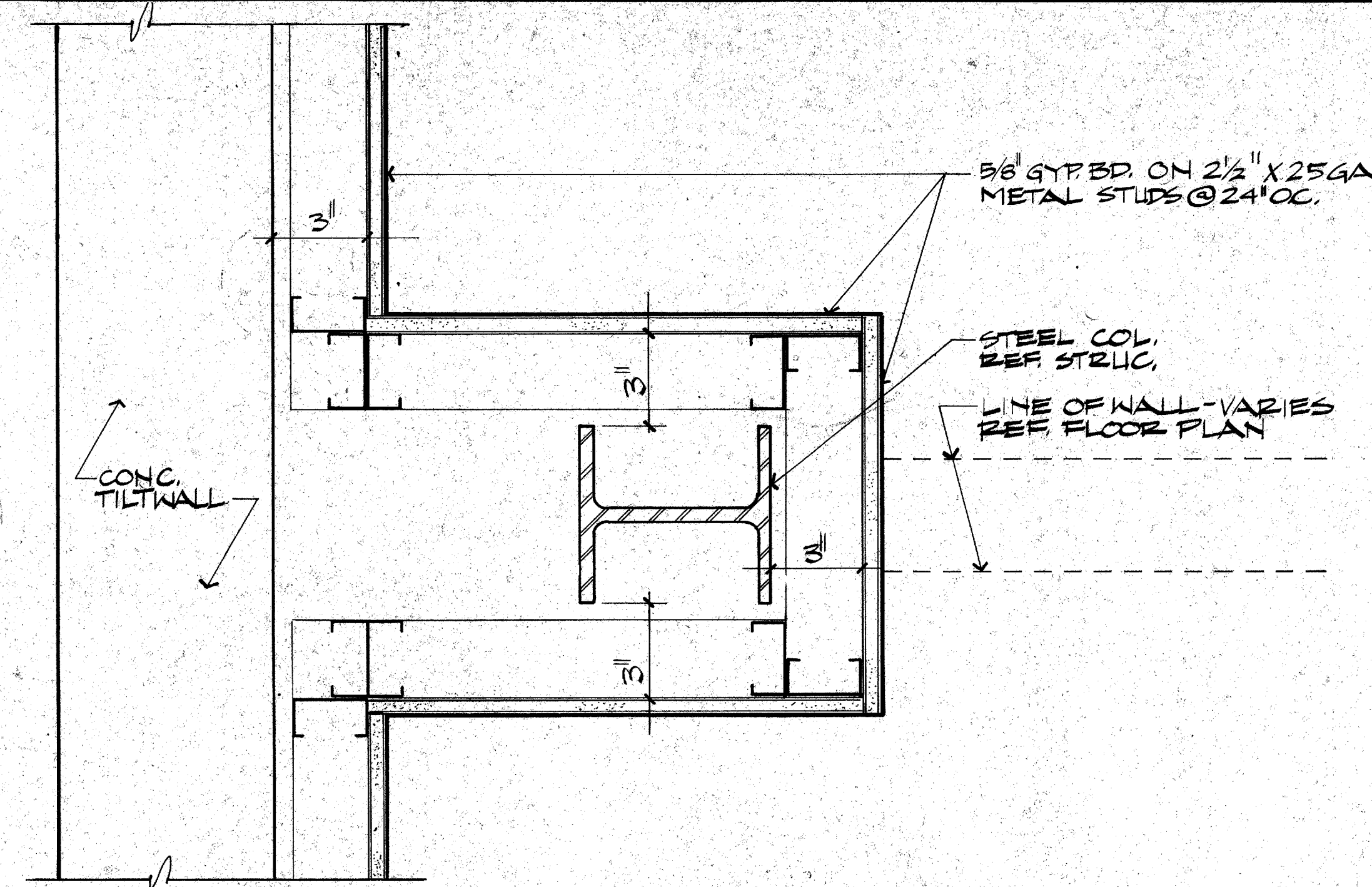
A B C D E F G H I J K L M N O P Q R S T U V W X Y Z AA AB AC AD AE AF AG AH AI AJ AK AL AM AN AO AP AQ AR AS AT AU AV AW AX AY AZ



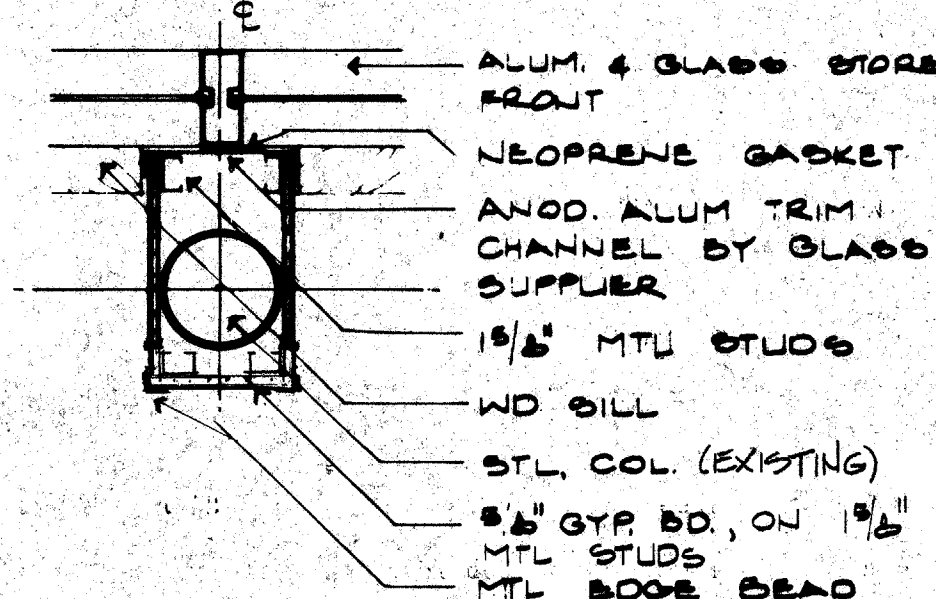
11 DETAIL
A4.3 1 1/2" = 1'-0"



05 COLUMN DETAIL
A4.3 1 1/2" = 1'-0"

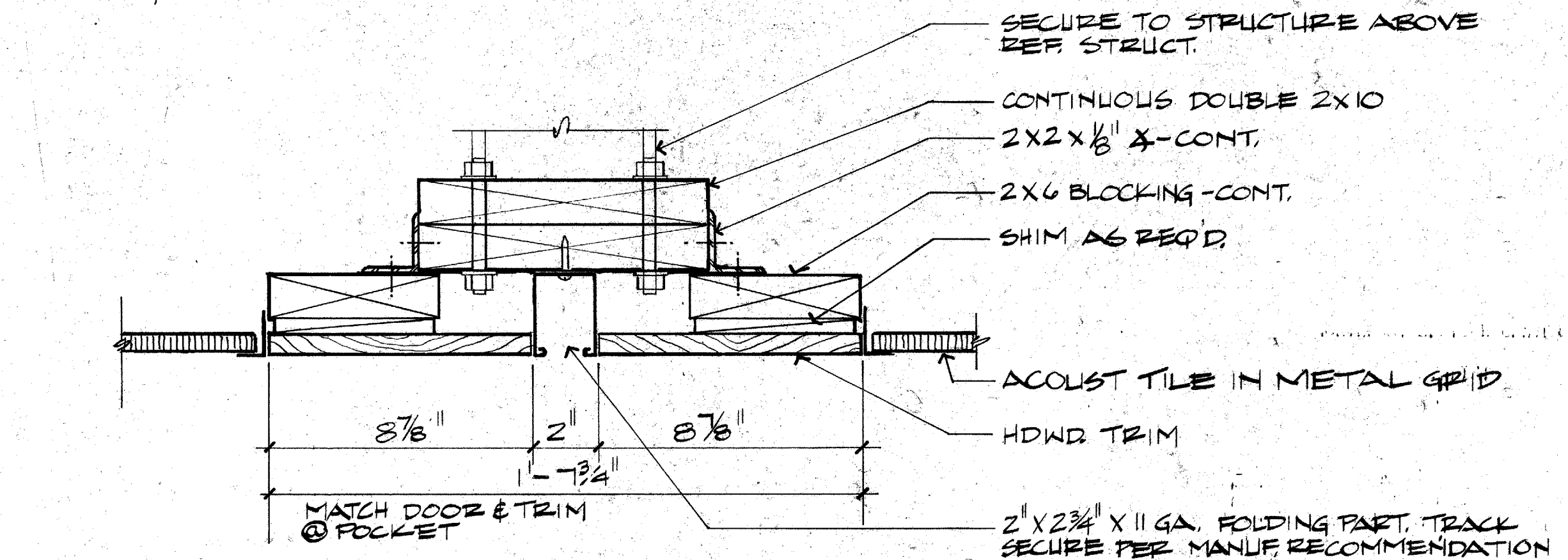


03 PLAN DETAIL
A4.3 3" = 1'-0"

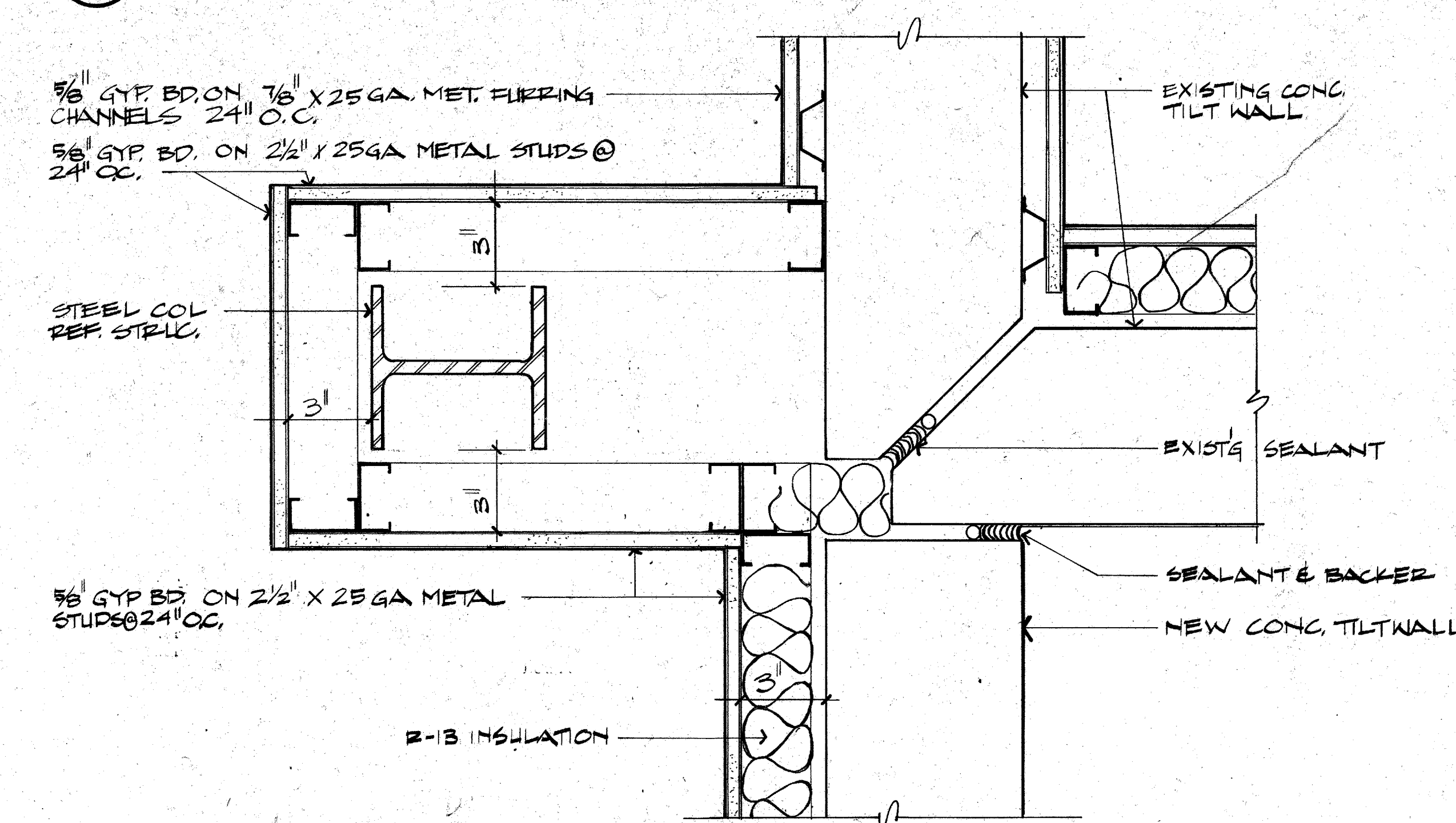


04 COLUMN DETAIL
A4.3 1 1/2" = 1'-0"

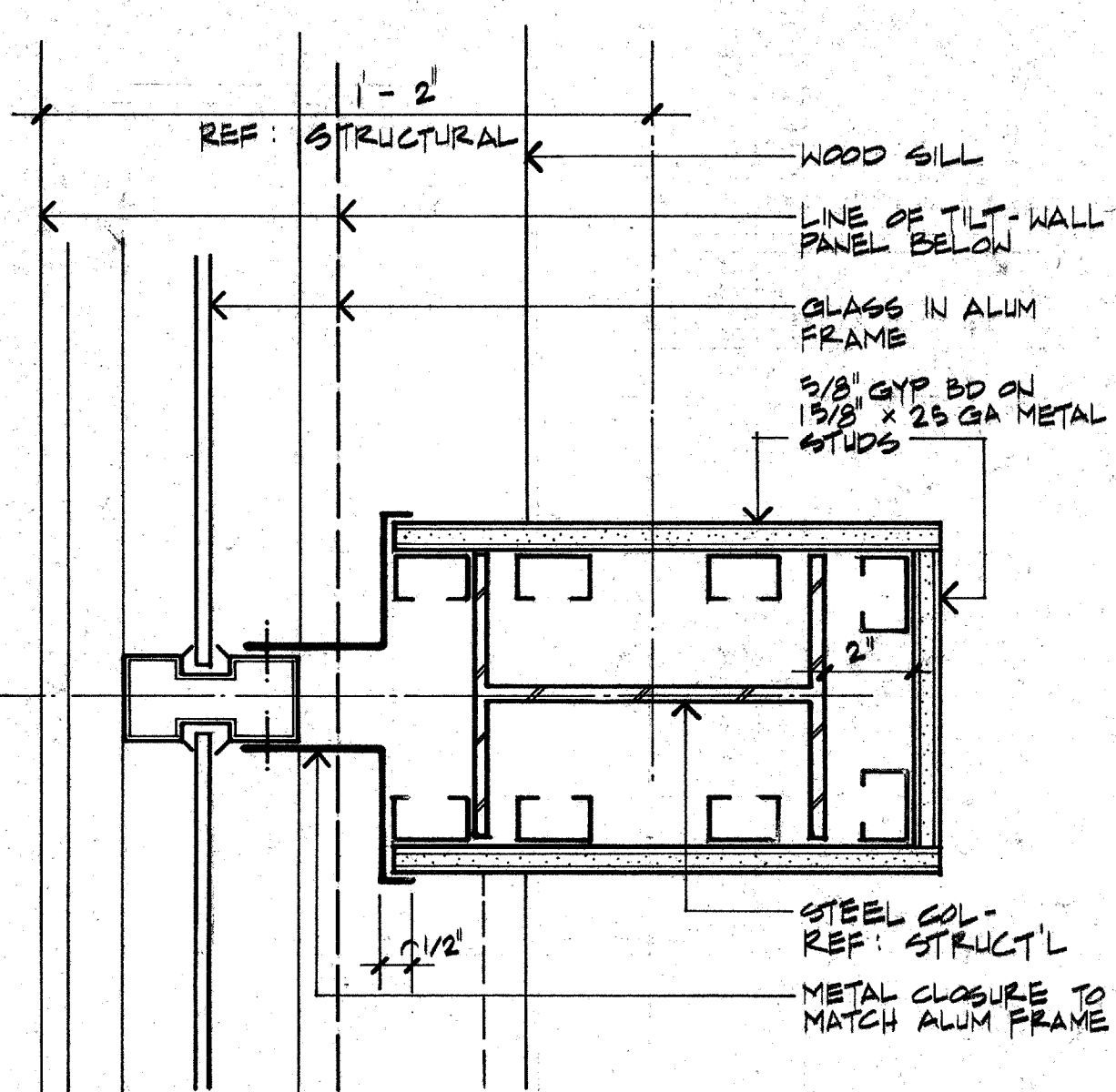
U.L. DESIGN #U504
08 PLAN DETAIL (HEAD / SILL SIM.)
A4.3 3" = 1'-0"



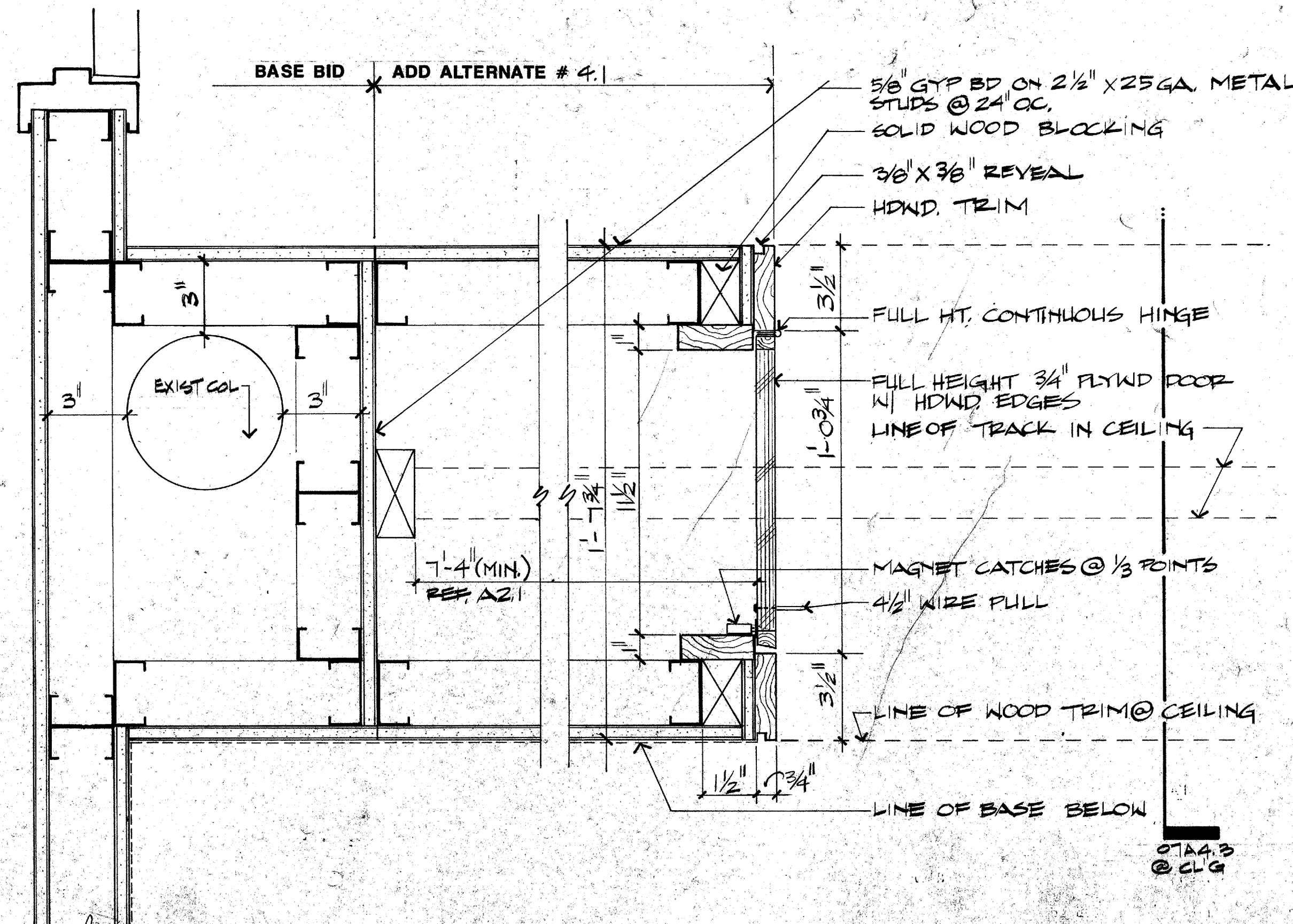
07 HEAD DETAIL - ADD ALT. # 4.1
A4.3 3" = 1'-0"



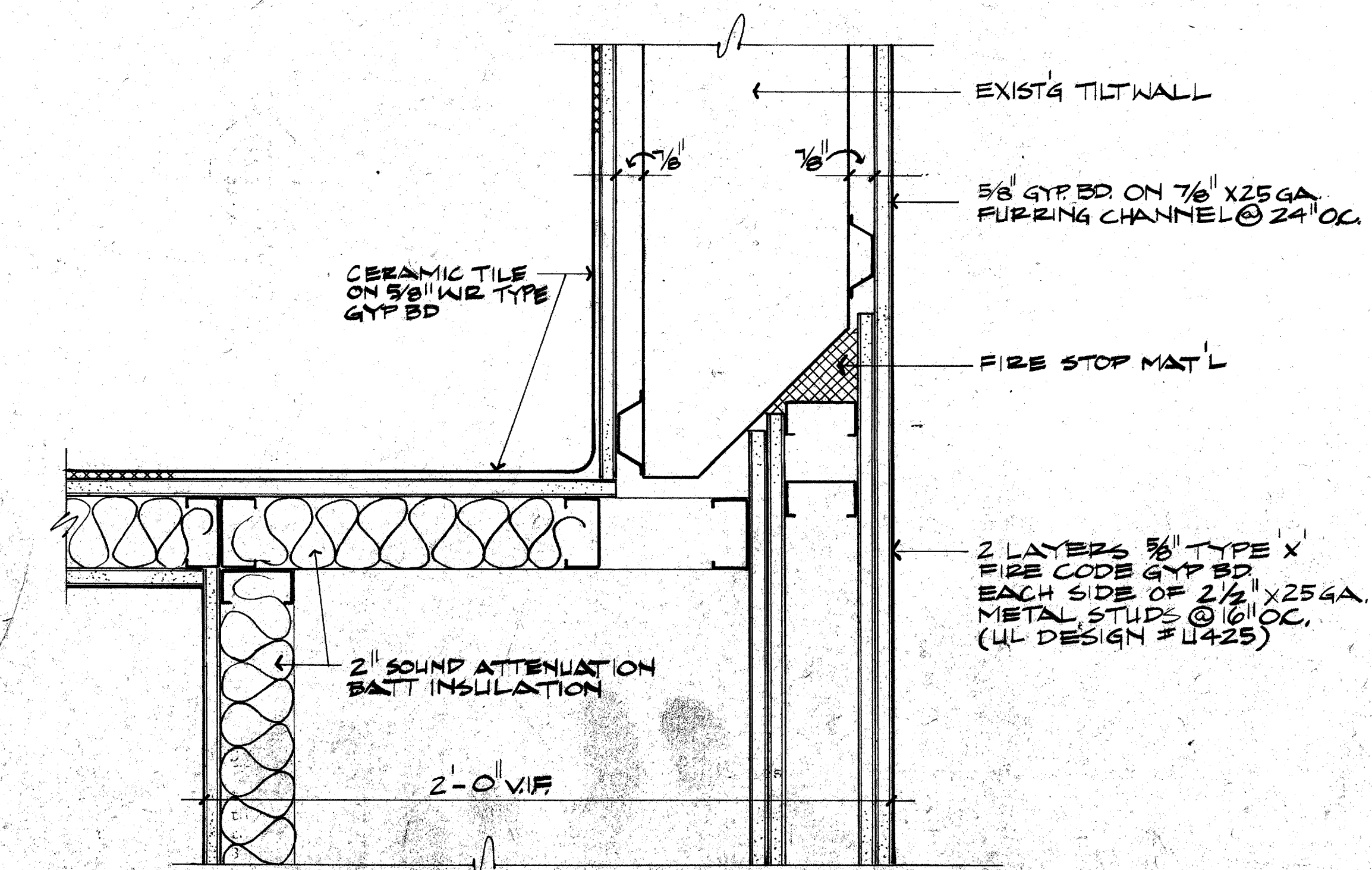
02 PLAN DETAIL
A4.3 3" = 1'-0"



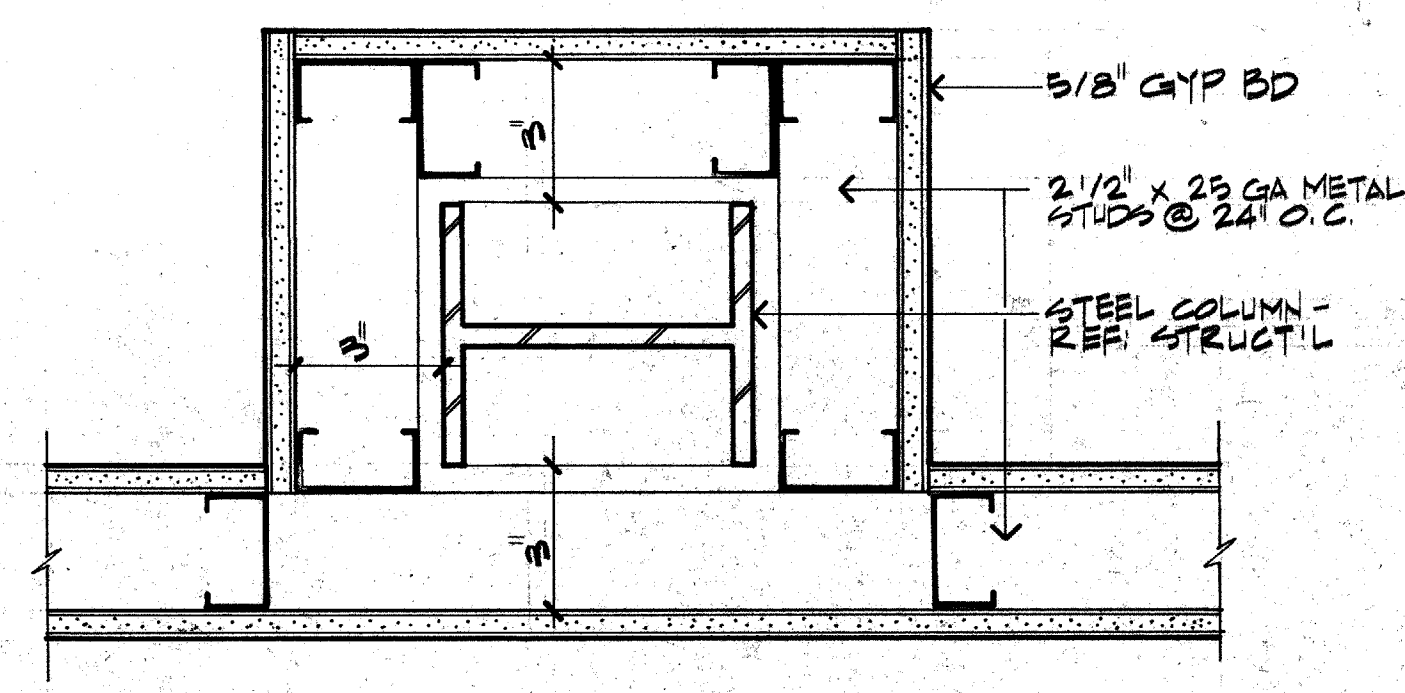
10 PLAN DETAIL
A4.3 3" = 1'-0"



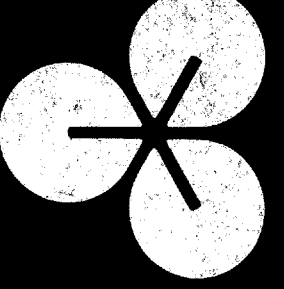
06 PLAN DETAIL
A4.3 3" = 1'-0"



01 PLAN DETAIL
A4.3 3" = 1'-0"



09 PLAN DETAIL
A4.3 3" = 1'-0"



EDI ARCHITECTS, INC.
ARCHITECTURE PLANNING ENGINEERING INTERIOR DESIGN
8440 WALNUT HILL LANE SUITE 2000
DALLAS, TEXAS 75231
AUSTIN, TEXAS 78708
512 / 489-9308

TOWN OF
Addison

**ADDITION TO
PUBLIC WORKS SERVICE CENTER**
Addison Texas
Westgrove Road

DATE: 5-16-86
11 JUNE 86
24 JULY 1986 - BID
Rev. 10.02.86

SHEET NO:
143
OF SHEETS
JOB NO: 851-137